



徐工徐工 助您成功
XCMG FOR YOUR SUCCESS

XLC22000

CRAWLER CRANE



地址(Add): 中国江苏省徐州市金山桥经济开发区桃山路19号 邮编(Postal Code): 221004
No.19 Taoshan Road, Economic development zone of jinshanqiao,Xuzhou,Jiangsu Province,China
统一服务热线(Unified service hotline): 86 400-110-9999

销售热线Sales Hotline

销售电话(Sale Tel): 86 0516-87892094

销售传真(Sale Fax): 86 0516-87892074

电子邮件(E-mail): jyxld@xcmg.com

服务质量投诉电话
(Quality Supervision Tel): 86 0516-87892587

服务热线Service Hotline

服务电话(Service Tel): 86 400-001-5678

服务传真(Service Fax): 86 0516-87892080

备件电话(Service Tel): 86 0516-87892086

备件传真(Service Fax): 86 0516-87892083



欢迎访问徐工商城
省心更省钱一站式



欢迎关注徐工工程机械官方微信
1. 直接搜索“XCMG 徐工”添加好友。
2. 微信公众账号“徐工集团官微”。
3. 直接扫描上方二维码。

—2022年1月版—

注: 出于产品不断改进的需要, 我们保留对产品型号、参数、配置进行变更的权力, 恕不另行通知。



CONTENTS

目录

- P02** |
- Description of Components and Systems
 - Main Technical Parameters
 - Combinations of working conditions
-
- P12** |
- Lifting performance table

02

XLC22000 CRAWLER CRANE

- P03 Description of Components and Systems
- P04-05 Main Technical Parameters
- P06-10 Combinations of working conditions

Description of Components and Systems

High lifting capacity

The Maximum lifting moment is 22000T · m, the Maximum rated lifting capacity is 1700t, and the longest boom combination is 222m.

High assembly efficiency

The main luffing and super-lift luffing systems are integrated transportation, and there is no need to rewind the rope for site transfer. The main luffing system includes mast, main luffing winch, luffing pulley block and main luffing steel wire rope; The super-lift luffing system includes super-lift mast winch section, super-lift luffing winch, super-lift luffing pulley block and super lift luffing steel wire rope.

Simple and convenient super-lift counterweight suspending device is selected, which is connected through pin shaft, with less assembly parts and fast assembly speed.

High operation efficiency

Single line speed reaches 140m/min.

Super-lift counterweight quick separation device to realize the rapid conversion of different super-lift counterweight weights.

The super-lift counterweight moving device realizes rapid change of 15-30m different super-lift counterweight radius.

The no-load super-lift counterweight suspending device realizes rotation and travelling with certain weight of SL counterweight in no-load state, and there is no need to transfer counterweight with an auxiliary crane.

Convenient transportation and strong adaptability

The transportation weight is light, and the maximum single piece transportation weight is 45t, meeting global transportation requirements.

Various transportation plans are applicable to different scenarios. The three piece mast set can be transported separately or integrated with the rear of the turntable; The front turntable and slewing ring can be transported separately or together with car-body.

High safety and reliability

The gravity center monitoring system monitors the center of gravity of the whole crane in real time, displays and gives early warning in advance, limits the movement in time, and ensures the safety of operation and boom raising/lowering. Multi directional environmental monitoring system, real-time HD digital closed-circuit monitoring of the surrounding environment.

Dual power and dual hydraulic systems are redundant to each other. International famous brand accessories, high reliability.

Ergonomic design, convenient operation and maintenance

Convenient maintenance, power container configuration, system integration, and external power oil source.

Comfortable environment, super large space, luxurious living control room and complete facilities.

Convenient operation, equipped with wireless remote control to improve the convenience and safety of assembly, transfer and hoisting operations. Save preparation time, 2000L large fuel tank, strong endurance and no need to refuel frequently.

Main Technical Parameters

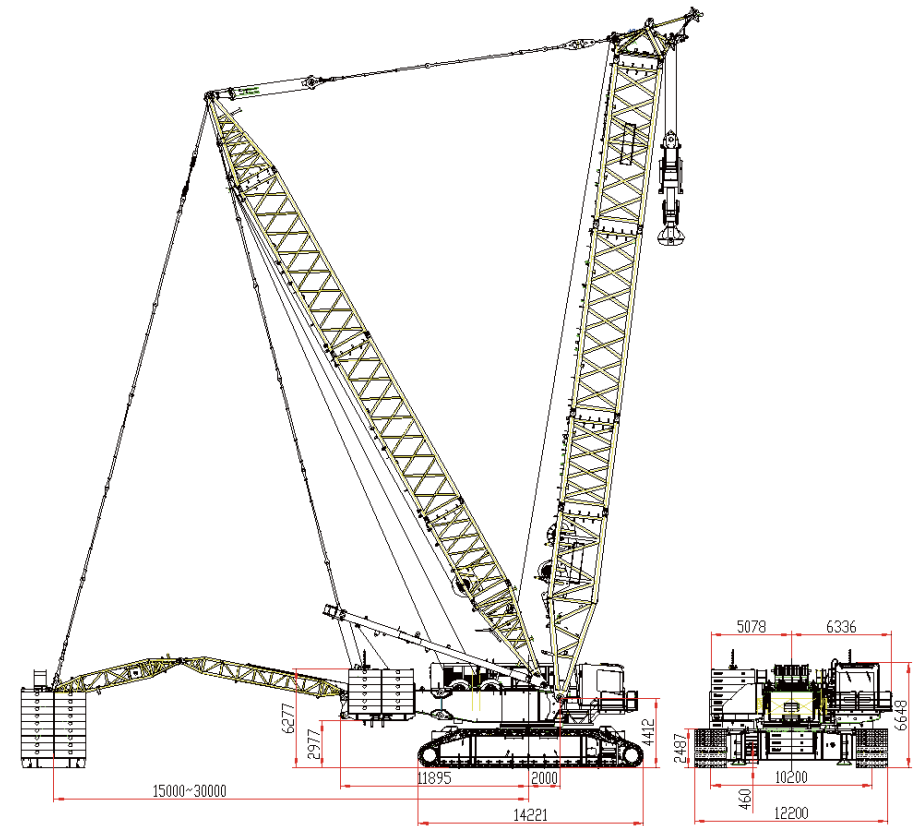
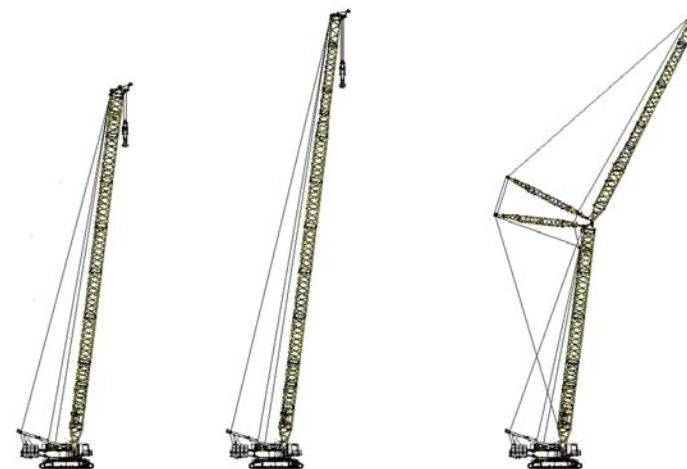


Fig.1 XLC22000 out-line dimension

Main technical parameters

Combinations of working conditions

1. Standard working condition



Heavy duty boom

Light duty boom

Tower jib

2. SL working condition



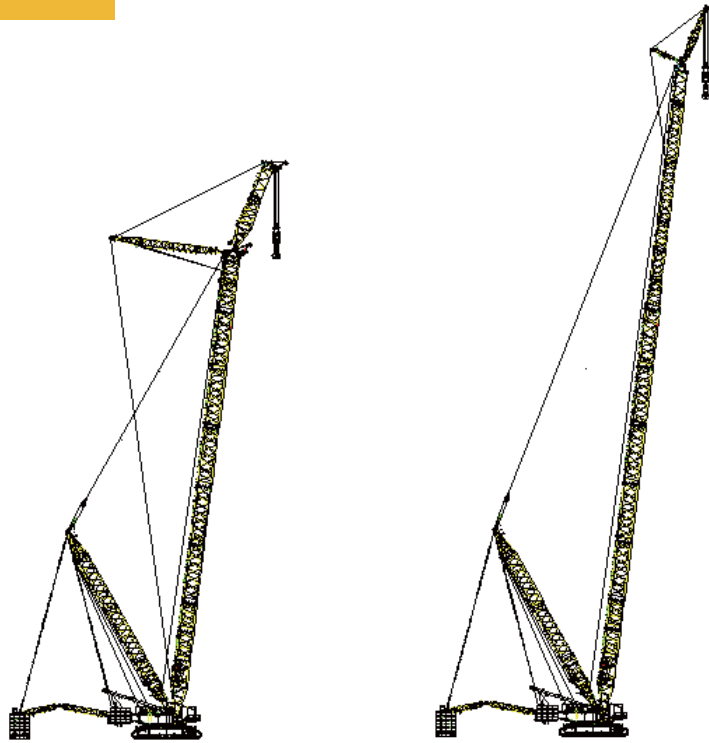
Heavy duty boom

Light duty boom

Tower jib

Items		Unit	Data
Max. rated lifting capacity		t	1700
Max. lifting moment		t.m	22000
Boom length in standard working condition	heavy duty boom	m	30~96
	Light duty boom	m	48~114
	Tower jib	m	30~96
Boom length in SL working condition	Heavy duty boom	m	42~120
	Light duty boom	m	90~171
	Tower jib	m	30~114
	Special jib	m	18
	Wind power jib	m	12
Mechanism speed	Max. single line speed of hoisting mechanism	m/min	140
	Max. single line speed of main luffing mechanism	m/min	57×2
	Max. single line speed of tower jib mechanism	m/min	135
	Max. single line speed of SL luffing mechanism	m/min	140
	Max. slewing speed	r/min	0.95
	Max. travel speed	km/h	0.85
Grade-ability			30%
Engine power		kW	2×360
Track gauge		m	10.2
SL counterweight radius		m	15~30
Max. single piece transport mass		t	45

Combinations of working conditions



Special jib

Wind power jib

Components and system description

Superstructure

Ways of boom combinations

Lifting boom includes standard working condition heavy duty boom, light duty boom, tower jib, and SL working condition heavy duty boom, light duty boom, tower jib and wind power jib, the structure form is 4-chord space lattice structure equal section in the middle, variable cross section at both ends, with strong bearing capability. The main working conditions are as below:

HB: standard working condition heavy duty boom, 30–96m, 1×12m boom butt, 1×6m thick-wall section, 1×6m insert section, 1×12m thick-wall section, 1×12m insert section, 3×12m light duty section, 1×10.5m transition section, 1×1.5m boom head.

LB: standard working condition light duty boom, 48–114m, 1×12m boom butt, 1×6m thick-wall section, 1×10.5m transition section, 3×12m light duty section, 1×6m tower jib transition section, 2×tower jib 6m insert sections, 1×tower jib 12m section, 1×tower jib 12m light duty section, 1×7.5m tower jib top section.

HW: standard working condition heavy duty boom + tower jib, tower jib 30–96m, 1×4.5m tower jib butt, 1×12m tower jib large cross section, 1×6m tower jib tipper section, 1×6m tower jib center hitch section, 3×12m tower jib insert section, 1×12m tower jib center hitch section, 1×12m tower jib light duty section, 1×7.5m tower jib top section.

SHB: SL working condition heavy duty boom, 42–120m, 1×12m butt, 1×6m thick-wall section, 1×6m insert section, 1×12m thick-wall section, 3×12m insert section, 3×12m light duty section, 1×10.5m transition section, 1×1.5m boom head. (Standard configuration 1350t boom head, optional 1600 boom head)

SLB: SL working condition light duty boom, 90–171m, 1×12m butt, 1×3m thick-wall section, 1×6m thick-wall section, 1×6m insert section, 1×12m thick-wall section, 3×12m insert section, 3×12m light-duty section, 1×10.5 transition section, 1×6m tower jib transition section, 2×6m tower jib insert sections, 2×12m tower jib light duty section, 1×7.5m tower jib top section.

SHW: SL working condition heavy duty boom + tower jib, tower jib 30–114m, 1×4.5m tower jib butt, 1×12m tower jib large cross section, 1×6m tower jib tipper section, 3×12m tower jib insert section, 1×12m tower jib center hitch section, 2×12m tower jib light duty section, 1×7.5m tower jib top section.

SHVJ: SL working condition heavy duty boom + special jib, special jib 18m, composed of a 4.5m tower jib butt, a 6m tower jib tipper section, and a 7.5m tower jib top section.

SLJ: SL light duty boom + wind power jib, wind power jib 12m, composed of a 12m wind power jib.

Boom luffing components

High strength pendant structure is adopted, which is composed of two groups of pendants. The pendants are formed by cutting high-strength steel at one time, with high safety factor.

Turntable

The turntable adopts front and rear split structure, high-strength box structure, and a cross beam is connected in the middle, with good stiffness.

Mast

The standard mast adopts box structure, and the super lift mast adopts Lattice structure, with good overall stability. The mast is equipped with a jacking mechanism, and the super lift mast is equipped with a hydraulic automatic control backstop mechanism. The super lift mast can form a super lift mast crane for auxiliary installation of the main boom.

Composition of the mechanism

mechanism	Purpose	Location
The 1 st hoisting mechanism	Hoisting for main boom, fixed jib, tower jib	Front part of Turntable
The 2 nd hoisting mechanism	Hoisting for main boom, fixed jib, tower jib	The middle part of turntable
Single pulley mechanism	Hoisting for main boom, tower jib	Boom butt
Main boom luffing mechanism	Main boom luffing	Turntable rear part
Tower jib luffing mechanism	Tower jib luffing	Main boom butt
SL luffing mechanism	SL boom luffing	SL mast winch section
Slewing mechanism	Superstructure slewing	Turntable front part
Travel mechanism	Overall crane travelling	Crawler track front part, rear part
Reeving mechanism	Auxiliary hoisting luffing mechanism installing wire rope	Front part of turntable

Hoisting mechanism

The main and auxiliary hoisting mechanisms are of the same model and driven separately. When the lifting capacity is large, the two winches work synchronously. The winch adopts disc type constant closed brake, built-in reducer and variable motor drive. The main and auxiliary lifting adopts box type support, which is connected with the turntable by pin shaft for easy assembly. All steel wire ropes are anti-rotation steel wire ropes, which avoids the twisting of steel wire ropes.

Main hoisting mechanism, single line pull 23.5t, wire rope diameter ϕ 32 mm, length 1600m;

Auxiliary hoisting mechanism, single line pull 23.5t, wire rope diameter ϕ 32 mm, length 1600m;

Single pulley mechanism, single line pull 23.5t, wire rope diameter ϕ 32 mm, length 450m.

Components and system description

Luffing mechanism

The main boom luffing, tower jib luffing and super lift luffing are built-in reducer and disc type constant closed brake, and are equipped with ratchet locking device. The main boom luffing is a double drum.

Slewing mechanism

It is arranged in front of the turntable and is composed of three planetary reducers. The disc type constant closed brake is engaged with the slewing ring, hydraulic buffer and free sliding function.

Slewing bearing

The three-row roller type external meshing slewing bearing is adopted, which has high strength, large bearing torque and convenient maintenance.

Hydraulic cylinder

In order to realize the function of self-assembly/disassembly, the main pin shafts are plugged with power pins; It is equipped with mast jacking cylinder, super lift counterweight raising cylinder, boom and backstop cylinder and outrigger cylinder of super lift mast.

Cab and power container

Based on the principle of improving the user's ergonomic experience, the new modeling cab adopts steel frame structure, hollow column and through large glass design, with spacious space and bright field of view. The cab is equipped with adjustable heated leather seats, adjustable display and follow-up armrest box to meet the personalized and comfort needs of users. Customized storage side cabinet, cabinet and sofa design to meet the needs of users for storage and rest; Omni-bearing air duct layout, heating and cooling air conditioning, acoustics, fire extinguishing device, closed-circuit monitoring system, brand socket, coat hook, etc. the details enhance the ergonomic interactive experience.

The new modeling power box adopts frame structure and assembled panel design, which greatly improves the convenience of disassembly and maintenance. The grid design of the power box enhances the air absorption capacity, effectively blocks dust and rain, and strengthens the overall style. The interior is equipped with channel bedplate design and treadable trunking design to ensure the orderly and unified internal layout; At the same time, it is equipped with full coverage sound insulation cotton design and fire extinguisher design, which fully reflects the ergonomic care.

Undercarriage

The undercarriage includes car-body, connecting beam and crawler tracks. The connecting beam is hinged with the car-body and crawler tracks, and the pin shaft is installed and driven by hydraulic cylinder.

Car-body

The car-body adopts high-strength steel plate and box structure, and a diaphragm is set in the middle to strengthen its torsional stiffness. It has simple structure, strong bearing capacity and good rigidity.

Connecting beam

The connecting beam adopts box structure, which is connected with the car-body and crawler tracks by pin shaft, and a diaphragm is set in the middle.

Crawler tracks

It includes crawler track structure, bearing rollers, drive roller, the upper rollers and track shoes, travel mechanism. The left and right crawler tracks are arranged symmetrically. The crawler track structure adopts box frame structure, the outer web plate, the inner side is provided with horizontal and vertical diaphragms, which are connected with the connecting beam by pin shaft, and the connecting holes are locally strengthened. The bearing rollers, drive roller, the upper rollers and track shoe are cast and forged with high-strength alloy steel.

The crawler traveling drive adopts a built-in planetary gear reducer and hydraulically releases the traveling brake. Each crawler track includes two reducers, and each reducer is driven by two axial plunger variable motors. The traveling mechanism on the left and right crawler frames can be operated synchronously or independently to realize straight travel and turning.

Hydraulic system

The closed and electric proportional pilot variable pump control system is adopted, which has stable system and good speed fine adjustment characteristics. Dual hydraulic system, mutual redundancy and high reliability.

The main and auxiliary hoisting, main boom and fixed jib luffing, travelling and slewing are closed pump control systems without balance valve and reversing valve, and the transmission is stable without impact.

The main and auxiliary hoisting and traveling mechanisms with large speed regulation range are driven by variable motor. Variable motor + variable pump control system can accurately control the movement speed and has good micro movement.

Main Technical Parameters

Electrical system

The electrical system mainly includes the following parts: engine control, monitoring instrument, auxiliary equipment, hydraulic system control, load moment limiter and safety monitoring.

The conventional electrical system adopts 24V parallel circuit, and the wiring of each electrical equipment adopts single line system, which is mainly used for crane detection, control, sound, lighting, etc.

The auxiliary equipment adopts 220V strong current system, which is mainly used to drive the cooling and heating air conditioner in the control room.

Engine system

Manufacturer: Benz;
Model: OM460LA.E3A (two);
Rated power: 360kW/1800rpm;
Maximum output torque: 2200N.m;
Type: in line six cylinder, water cooling, turbocharged intercooling, EFI, diesel engine;
Emission standard: Euro III and China III;
Fuel tank capacity: About 1000L × 2.

Hook blocks

Hook Name	1350t	65t	25t
Dead weight (t)	46	4.1	1.4
Pulley quantity	36	1	0

The 1350t hook is a combined hook, which can be combined and converted into 750t hook, 600t hook, 375t hook and 325t hook. In addition, 1600t, 1000t and 500t hooks are optional.

Counterweight blocks

The counterweight includes car-body counterweight blocks, turntable counterweight blocks and super lift counterweight blocks.

The counterweight includes car-body counterweight blocks, turntable counterweight blocks and super lift counterweight blocks.

The car-body counterweight is 90t in total, and there are 2 counterweight boxes, each of which is 15t; there are 6 counterweight blocks, each 10 tons, which are installed in the counterweight box at the front and rear of the car-body.

The counterweight of the turntable is 260 tons in total. One counterweight tray assy., weighing 20 tons; There are 24 counterweight blocks, each weighing 10 tons.

The super-lift counterweight is 550 tons, of which 80 tons (8 balance weights) are optional. Two counterweight pallets, one large pallet, with a weight of 20 tons, and one separation pallet, with a weight of 10 tons; 52 balance weights, each weighing 10 tons.

The specific weight and quantity are as follows:

名称 Name	车体平衡重 Car-body counterweight box	车体平衡重块 Car-body counterweight blocks	转台平衡重托架 Turntable counterweight tray	转台平衡重块 Turntable counterweight blocks	超起平衡重 大托架 St. counterweight big tray	超起平衡重 分离托架 St. counterweight separation tray	超起 平衡重块 St. counterweight blocks
自重(t) Dead weight	15	10	20	10	20	20	10
数量 Qty	2	6	1	24	1	1	52

Centralized lubrication system

The progressive centralized lubrication system, controlled by computer programming, can automatically fill lubricating oil point by point to ensure sufficient oil at each lubricating point, making vehicle maintenance easier and convenient.

Safety protection measures

Safety devices include emergency shutdown, load moment limiter, hoisting winch over-winding device (hoisting height limit device), hoisting winch over-released protective device (rope end limiter), ratchet locking device, boom angle limiter, Sound and light alarm, Tricolor warning lamp, Illumination light, height indicating lamp, anemometer, boom backstop device, level gauge, Overflow valve, balance valve, two-way hydraulic lock, etc.

Emergency shutdown

In case of emergency, press the emergency stop switch to stop the action and shut down the engine.

Load moment limiter

Tailored advanced microprocessor technology has the advantages of low power consumption, strong function, high sensitivity and simple operation.

Detection function: LMI can automatically detect parameters such as boom angle and lifting weight.

Display function: use large-screen color LCD display to show important parameters in lifting operation through text and graphics, such as load moment percentage, actual lifting weight, rated lifting weight, radius, boom length, angle, maximum lifting height, working condition code, parts of line, limit angle and error code.

Warning function: with complete pre-alarm and overload stop function. If it is detected that the actual weight exceeds the rated lifting capacity or boom angle exceeds the maximum value, LMI will send alarm and limit the current movement of the crane.

The system has fault self-diagnosis function.

Hoisting winch over-wind protective device (hoisting height limit device)

When the hook block is hoisted up to a certain height, the over-wind warning light on display will be on, and load moment limiter will stop hoisting up movements at the same time.

Hoisting winch rope over-release protective device (rope end limiter)

When the proximity switch inside the drum detects that there are only three loops of rope left on winch, the over-release warning light on display will be on, and load moment limiter will stop the movement of lowering down at the same time.

Safety protection switch

This switch is placed in front of the handle. When the switch is not pressed, all movement signals are shielded and the handle cannot work. This switch is set to prevent mis-operation caused by unintentional contact when getting on or off the crane.

Ratchet locking device

This function is used to lock the luffing winch. The device must be opened when lowering boom, otherwise it cannot lowered. It is used to protect the safety of the boom when it is out of service, and the ratchet state is shown on the display.

Boom angle limiter

When boom angle reaches the upper limit, boom raising will be stopped; when boom radius is beyond the working range, boom lowering will be stopped.

Monitoring system

It is composed of four cameras and two monitors, used to monitor main winch, aux. winch, tower jib luffing winch, superlift luffing winch and superlift counterweight.

Sound and light alarm

When crawler crane is moving and slewing, there is light and sound for warning.

Tricolor warning lamp

The lamp comprises three colors. When crane loading is below 90% of the rated capacity, the "green light" is on to indicate that the crane is operating in a safe area; when crane loading is below 90%~100% of the rated capacity, the "yellow light" is on to indicate that the crane is close to the rated load; when crane loading exceeds 100% of the rated capacity, both "red light" and "yellow light" will be on to indicate that the crane is overloaded and in the dangerous area, the control system will automatically cut off crane movement to dangerous direction.

Illumination light

There is illumination light at front of turntable, on boom and inside the cab for night operation.

Height indicating Lamp

It is located on boom tip for high level operation warning.

Anemometer

It can detect the current wind speed and send signal to the monitor in operator's cab to remind the operator for safe operation in wind load.

12

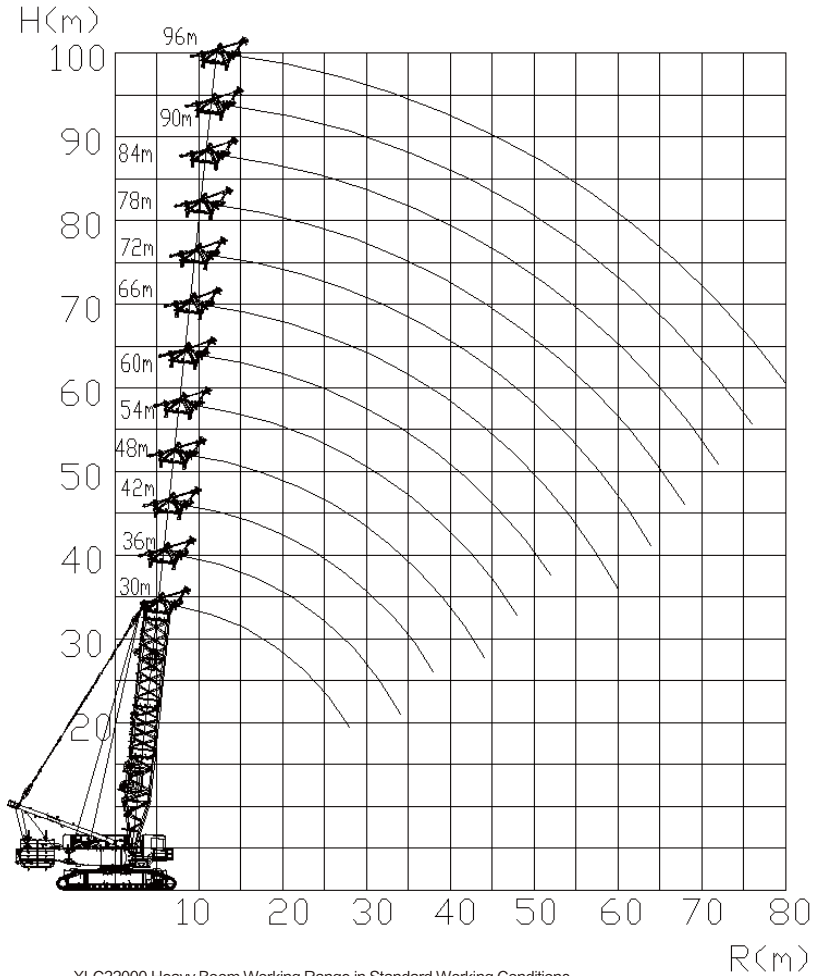
XLC22000 CRAWLER CRANE

P13-42 Lifting performance table

Lifting performance table

Standard Working Conditions

Heavy Boom Lifting Performance Table in Standard Working Conditions



Lifting performance table

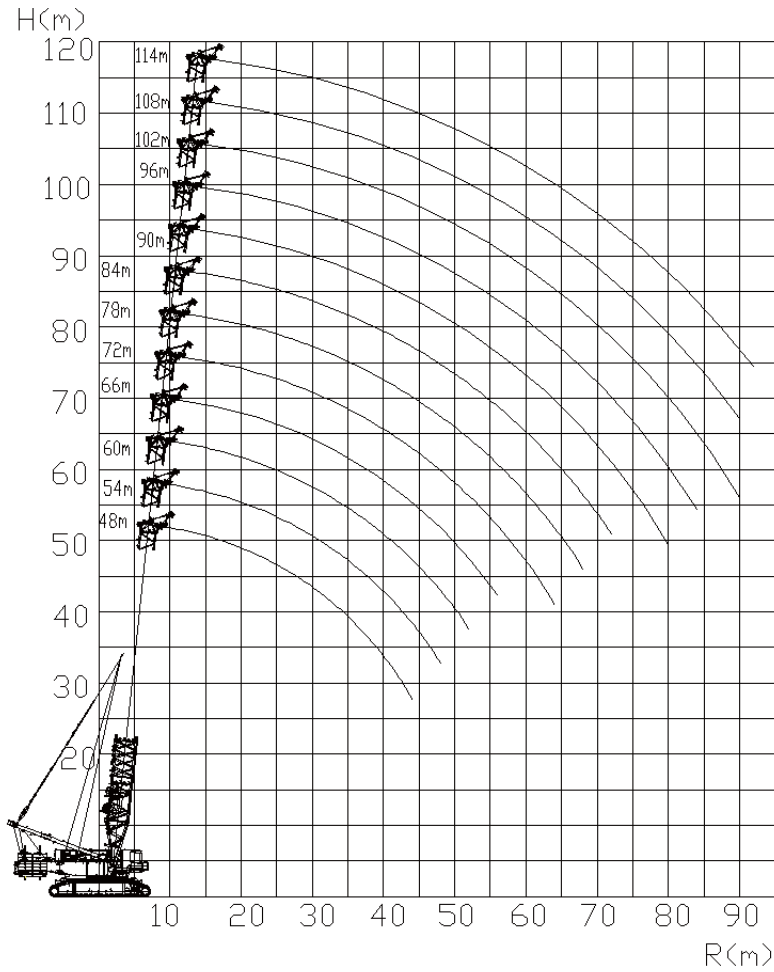
XLC22000 HB Heavy Boom Lifting Performance Table in Standard Working Conditions
(Turntable counterweight 260t + car-body counterweight 90t)

Radius (M)	Boom Length (m)															
	30	36	42	48	54	60	66	72	78	84	90	96				
7	860															
8	745	745	742													
9	647	645	643	642												
10	577	576	575	575	575	572										
11	518	516	515	513	512	512	515	510								
12	469	467	466	464	462	462	462	460	460	456						
13	427	426	425	423	421	421	421	419	418	415	405					
14	392	391	390	388	386	386	386	384	382	380	372	360				
15	362	361	360	357	356	356	356	353	352	349	345	340				
16	336	334	334	331	330	329	329	327	326	323	322	315				
17	313	311	311	308	307	306	306	304	303	300	298	295				
18	292	291	290	288	286	286	286	284	282	279	278	275				
19	274	273	272	270	268	268	268	265	264	261	260	257				
20	258	256	256	253	252	252	252	249	248	245	243	240				
22	230	228	228	225	224	224	224	221	220	217	215	212				
24	206	205	204	202	201	200	200	198	196	194	192	189				
26	186	185	185	183	181	181	181	178	177	174	172	169				
28	169	169	168	166	164	164	164	162	160	157	156	153				
30		154	154	151	150	150	150	147	146	143	141	138				
32		141	141	139	137	137	137	134	133	130	128	125				
34		130	130	128	126	126	126	123	122	119	117	114				
36			120	118	116	116	116	114	112	109	107	104				
38				111	109	107	107	108	105	103	100	99	96			
40					101	99	99	100	97	95	92	91	88			
44						87	85	85	86	83	82	79	77	74		
48							74	74	74	72	70	67	66	63		
52								64	65	62	61	58	56	53		
56									56	54	52	49	48	45		
60										49	46	45	42	40	38	
64											39	38	36	34	31	
68												32	29	28	25	
72													23	22	19	
76															16	14
80																10

Lifting performance table

Lifting performance table

Light Boom in Standard Working Conditions



XLC22000 Light Boom Working Range in Standard Working Conditions

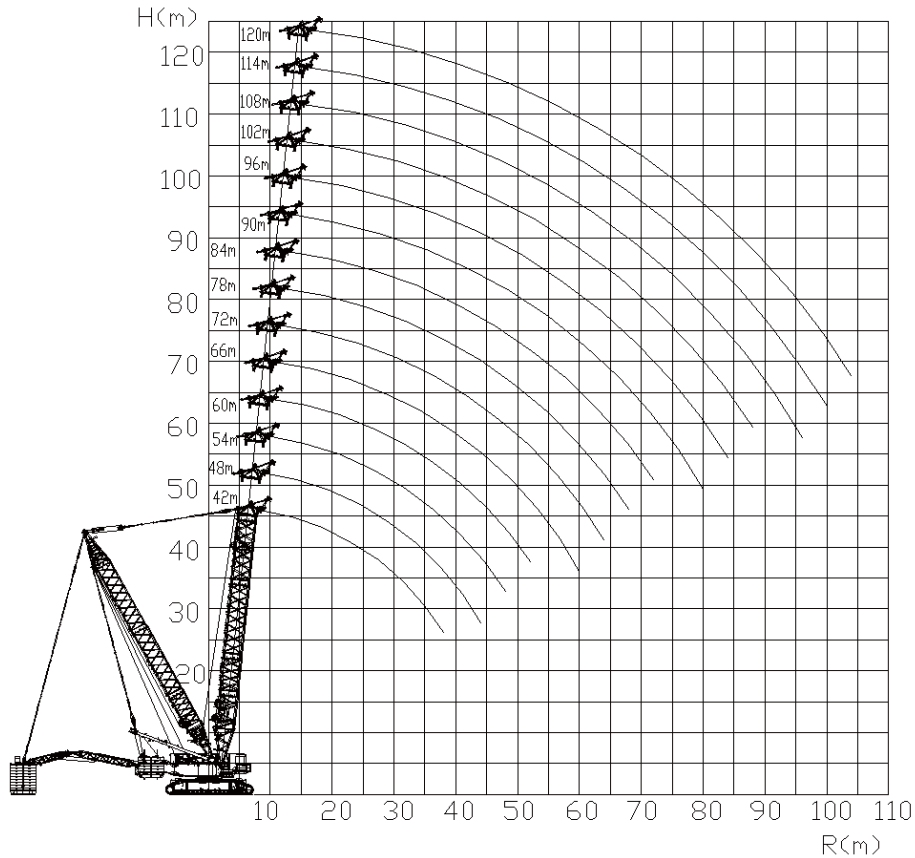
Light Boom Lifting Performance Table in Standard Working Conditions (Turntable counterweight 260t + car-body counterweight 90t)

Radius (M)	Boom Length (m)												
	48	54	60	66	72	78	84	90	96	102	108	114	
9	650	650											
10	583	582	570	566									
11	523	522	519	518	505								
12	474	473	470	469	466	450	446						
13	432	430	428	427	423	422	419	405	400				
14	397	396	393	392	388	387	384	383	364	361	345		
15	367	366	363	361	358	357	354	352	351	340	324	315	
16	340	338	336	334	331	330	327	326	325	318	304	295	
17	317	316	313	311	308	307	304	303	302	295	283	278	
18	296	295	293	291	288	286	283	282	282	275	268	261	
19	278	277	275	273	270	268	265	264	263	260	253	243	
20	262	261	258	257	254	251	248	247	246	245	239	227	
22	233	232	229	228	225	223	220	219	218	217	215	199	
24	210	209	206	205	202	200	197	196	195	194	194	177	
26	191	190	187	185	182	180	178	176	176	175	175	158	
28	174	173	170	169	165	164	161	160	159	158	158	141	
30	160	159	156	154	150	148	146	144	144	142	142	128	
32	146	145	142	141	138	136	133	132	131	130	130	115	
34	135	134	131	130	127	125	122	121	120	119	119	105	
36	125	124	122	120	117	115	112	111	110	109	109	96	
38	116	115	113	111	108	106	103	102	101	100	100	88	
40	108	107	105	103	100	98	96	94	94	92	92	81	
44	95	94	91	90	87	85	82	81	80	79	79	68	
48		82	80	78	75	74	71	69	69	68	68	58	
52			70	68	65	64	61	60	59	58	58	49	
56				60	57	56	53	52	51	49	49	42	
60					50	48	45	44	43	42	42	35	
64					44	42	39	37	37	36	36	29	
68						36	33	32	32	31	31	24	
72							29	27	27	26	26	20	
76								23	22	21	21	16	
80									19	15	15	13	
84										12	14	11	10
88											11	8	8
92												6	6

Lifting performance table

Superlift Working Conditions

Heavy Boom in Superlift Working Condition



XLC22000 Heavy Boom Working Range in Superlift Working Condition

Lifting performance table

SHB-S Heavy Boom Lifting Performance Table in Superlift Working Condition(1700t)
 (Turntable counterweight 260t +car-body counterweight 90t+superlift counterweight 560t, Superlift mast radius 20m, Superlift counterweight radius 30m)

Radius (M)	Boom Length (m)														
	42	48	54	60	66	72	78	84	90	96	102	108	114	120	
9	1700	1700													
10	1700	1700	1600	1440											
11	1700	1700	1600	1440	1245										
12	1650	1650	1600	1440	1249	1126	932								
13	1608	1605	1600	1440	1249	1130	934	853	740						
14	1572	1520	1491	1403	1230	1133	936	855	740	675	593				
15	1393	1390	1388	1387	1195	1135	938	858	740	687	595	533	445		
16	1292	1296	1294	1293	1195	1138	940	859	740	688	595	535	446	401	
17	1202	1213	1211	1210	1195	1141	941	862	740	689	595	535	446	402	
18	1123	1139	1138	1136	1136	1128	943	862	740	690	596	536	447	402	
19	1052	1074	1072	1071	1070	1068	945	865	740	692	597	537	447	402	
20	989	1015	1014	1012	1012	1009	947	867	740	693	598	538	448	403	
22	900	915	913	911	911	908	888	849	740	695	601	539	448	403	
24	825	831	829	828	827	825	816	805	740	697	601	540	449	404	
26	744	761	759	758	757	754	753	740	728	697	601	540	449	404	
28	673	695	699	698	697	694	693	685	679	656	602	540	449	404	
30	610	650	647	646	645	642	641	635	632	614	601	540	450	404	
32	553	605	602	600	600	597	596	600	593	577	566	540	450	404	
34	502	559	562	561	560	557	556	560	555	544	534	518	450	404	
36	454	513	525	525	525	522	521	525	520	512	506	490	449	404	
38	409	470	496	492	492	490	489	490	490	485	480	466	445	404	
40		430	470	462	463	461	461	462	462	460	456	443	423	403	
44		356	405	420	412	410	410	412	415	416	414	403	385	374	
48			343	377	380	375	368	372	375	375	378	369	353	343	
52				325	345	343	340	342	340	340	345	338	325	316	
56					304	315	310	310	310	308	315	311	300	292	
60					262	280	288	285	285	282	289	285	277	270	
64						245	260	260	260	258	265	262	255	250	
68								230	238	240	237	244	241	235	232
72									213	219	219	225	223	217	214
76										197	201	209	206	201	198
80										175	182	193	191	186	184
84											164	176	177	173	170
88												160	163	161	158
92													148	149	147
96													134	136	137
100														124	126
104															114

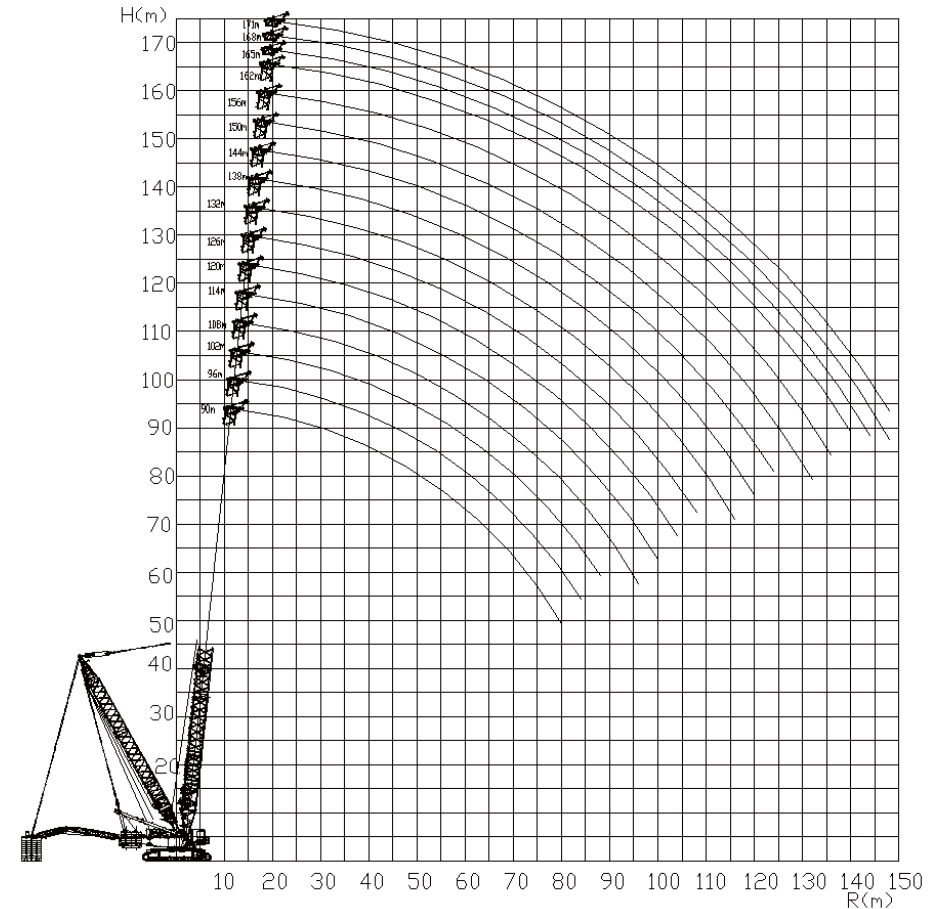
Lifting performance table

SHB Heavy Boom Lifting Performance Table in Superlift Working Condition(1350t)
 (Turntable counterweight 260t +car-body counterweight 90t+superlift counterweight 560t,
 Superlift mast radius 20m, Superlift counterweight radius 30m)

Radius (M)	Boom Length (m)													
	42	48	54	60	66	72	78	84	90	96	102	108	114	120
9	1350	1350												
10	1350	1350	1350	1144										
11	1350	1350	1350	1144	1065	950								
12	1350	1350	1350	1144	1065	950	880							
13	1350	1350	1350	1144	1065	950	880	810	736					
14	1350	1350	1350	1144	1065	950	880	810	736	665	593			
15	1350	1350	1350	1144	1065	950	880	810	736	666	595	533		
16	1291	1295	1293	1144	1065	950	880	810	736	668	595	535	448	403
17	1202	1213	1211	1144	1065	950	880	810	736	669	595	535	448	404
18	1123	1139	1138	1136	1065	950	880	810	736	670	596	536	449	404
19	1052	1074	1073	1071	1065	950	880	810	736	671	597	537	449	404
20	988	1015	1014	1012	1012	950	880	810	736	671	598	538	449	405
22	898	915	913	911	911	908	880	810	736	673	601	539	450	405
24	822	831	830	828	827	825	816	800	736	674	601	540	451	406
26	745	761	760	758	757	754	753	736	723	675	601	540	451	406
28	673	695	700	698	697	694	693	682	679	651	602	540	451	406
30	610	648	648	648	645	643	641	630	635	609	596	540	451	406
32	553	603	603	600	600	597	596	589	591	573	566	540	452	406
34	502	559	563	561	560	557	556	553	555	539	534	518	452	406
36	454	513	525	525	525	522	521	518	523	512	506	490	451	406
38	409	470	496	492	492	490	489	487	495	482	480	466	445	406
40		430	470	462	462	461	461	458	468	457	451	443	423	405
44		356	405	420	416	415	410	408	418	413	410	403	385	374
48			343	377	377	375	375	366	375	372	370	368	353	342
52				325	345	342	340	336	340	337	335	333	325	316
56					304	315	310	308	309	307	305	306	300	292
60					265	280	287	283	280	280	280	280	277	270
64					245	260	261	260	258	260	256	256	255	250
68						230	238	241	238	240	236	236	235	232
72							213	219	221	220	220	220	217	214
76								197	201	208	203	201	201	198
80								175	182	192	188	186	186	184
84									164	176	175	175	173	170
88										159	161	161	158	
92											148	149	147	
96											133	136	137	
100												124	126	
104													114	

Lifting performance table

Light Boom in Superlift Working Condition



XLC22000 Light Boom Working Range in Superlift Working Condition

Lifting performance table

Lifting Performance Table in Superlift Working Condition
 (Turntable counterweight 260t +car-body counterweight 90t+superlift counterweight 560t, Superlift mast radius 20m, Superlift counterweight radius 30m)

Radius (M)	Boom Length (m)																
	90	96	102	108	114	120	126	132	138	144	150	156	162	165	168	171	
13	650																
14	650	650	585														
15	650	650	585	535													
16	650	650	585	535	470	423											
17	650	650	585	535	470	423	376										
18	650	650	585	535	470	423	376	336	300								
19	650	650	585	535	470	423	376	336	300	270							
20	650	650	585	535	470	423	376	336	300	270	243	219					
22	650	650	585	535	470	423	376	336	300	270	243	219	196	190	171	162	
24	650	650	585	535	470	423	376	336	300	270	243	219	196	190	171	162	
26	650	650	585	535	470	423	376	336	300	270	243	218	196	189	171	162	
28	650	650	585	535	470	423	376	336	300	270	243	218	196	188	171	162	
30	643	597	585	535	470	423	376	336	300	270	242	218	196	187	171	162	
32	604	585	570	535	470	423	376	336	300	270	242	218	196	186	171	161	
34	569	553	538	522	470	423	376	336	300	269	242	218	196	185	170	161	
36	538	523	510	495	470	423	376	336	300	269	242	218	195	184	170	161	
38	510	496	485	471	458	423	376	336	300	269	242	215	195	183	170	161	
40	483	472	461	448	437	423	376	336	300	269	239	215	195	182	170	161	
44	433	428	420	408	399	387	376	336	300	268	239	214	193	181	170	160	
48	392	387	384	374	366	356	347	322	298	267	237	213	193	180	169	160	
52	357	353	351	344	338	328	321	311	273	266	237	212	192	179	169	159	
56	325	323	321	317	312	304	297	289	263	266	236	212	192	178	168	159	
60	298	296	295	291	289	282	277	269	253	254	235	211	191	177	168	158	
64	274	272	271	268	267	263	258	250	245	237	231	210	190	176	166	158	
68	254	251	251	248	247	243	241	234	229	222	217	208	188	175	164	156	
72	231	233	232	229	229	226	224	219	214	208	203	198	185	173	162	154	
76	210	214	216	213	212	209	208	204	201	195	190	186	182	171	160	152	
80	189	196	201	198	197	195	193	190	188	183	179	175	172	168	158	150	
84		177	184	185	184	181	180	177	175	172	168	164	161	158	151	148	
88			168	171	172	169	168	165	163	160	158	154	152	149	142	139	
92				157	160	158	157	154	153	149	148	145	143	140	134	131	
96				142	148	148	147	144	143	139	138	136	135	132	126	123	
100					135	137	137	135	133	130	129	127	127	125	119	116	
104						125	128	126	125	122	120	118	118	116	112	109	

Lifting performance table

Lifting Performance Table in Superlift Working Condition
 (Turntable counterweight 260t +car-body counterweight 90t+superlift counterweight 560t, Superlift mast radius 20m, Superlift counterweight radius 30m)

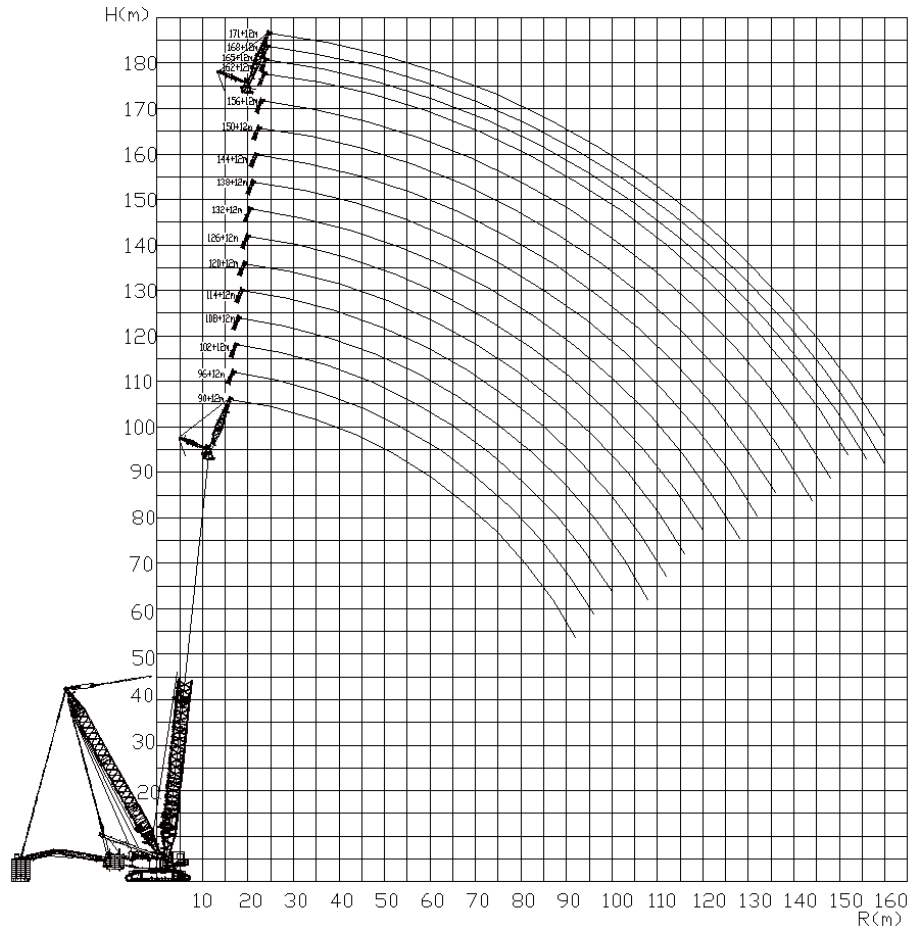
Radius (M)	Boom Length (m)																
	90	96	102	108	114	120	126	132	138	144	150	156	162	165	168	171	
108							118	118	117	114	112	110	110	109	104	102	
112								108	109	106	105	103	103	101	97	95	
116								99	101	99	98	96	96	94	90	89	
120									92	92	91	90	90	88	84	83	
124										84	85	84	84	82	79	77	
128											78	78	78	76	73	72	
132											71	72	73	71	68	66	
136												65	68	66	63	62	
140													62	61	59	57	
144														55	53	53	
148															48	47	

Lifting performance table

Lifting performance table

Wind Power Jib in Superlift Working Condition

XLC22000 SHJ Wind Power Jib in Superlift Working Condition (Turntable counterweight 260t +car-body counterweight 90t+superlift counterweight 560t, Superlift mast radius 20m, Superlift counterweight radius 30m)



Radius (M)	Boom Length (m)																
	90	96	102	108	114	120	126	132	138	144	150	156	162	165	168	171	
16	320																
17	320	320															
18	320	320	320	320													
19	320	320	320	320	320	313											
20	320	320	320	320	320	313	270	251									
22	320	320	320	320	320	313	270	251	225	208							
24	320	320	320	320	320	313	270	251	225	208	192	173	156	150			
26	320	320	320	320	320	313	270	251	225	208	192	173	156	150	141	136	
28	320	320	320	320	320	313	270	251	225	208	191	173	156	150	141	136	
30	312	320	320	320	319	313	270	251	225	208	191	173	156	149	141	135	
32	300	309	316	320	318	312	270	251	225	208	191	173	156	148	141	135	
34	291	298	307	313	316	311	270	251	224	207	191	173	156	147	141	135	
36	281	288	297	305	309	309	270	251	224	207	191	173	156	146	141	135	
38	272	280	287	296	302	303	270	251	224	207	191	172	156	145	141	135	
40	264	271	279	287	294	299	270	251	224	207	191	172	155	144	141	135	
44	248	256	264	271	278	285	270	251	224	207	190	172	155	142	140	135	
48	234	242	249	257	264	278	270	250	223	206	186	171	155	140	140	134	
52	222	232	244	251	257	269	268	250	223	206	180	167	155	140	140	134	
56	213	220	232	239	245	253	258	249	222	206	175	163	152	140	139	134	
60	203	210	221	228	234	241	247	244	221	205	169	158	148	138	137	133	
64	194	201	212	218	225	231	238	228	220	205	164	153	145	134	133	131	
68	188	197	203	210	216	219	218	215	206	204	160	149	140	131	130	128	
72	179	189	195	202	205	202	200	198	197	197	155	145	138	128	127	125	
76	174	183	189	191	189	187	185	185	185	185	152	142	134	124	124	123	
80	168	176	180	177	175	173	171	171	171	170	148	138	130	122	121	119	
84	163	168	167	164	163	160	158	158	158	158	145	134	124	120	117	117	
88	156	158	156	152	151	151	151	150	150	148	141	132	124	118	114	114	
92	149	147	146	146	146	146	146	146	146	145	137	129	121	116	111	111	
96		143	138	138	138	138	138	138	138	136	131	126	118	112	108	108	
100			134	133	130	130	130	130	130	127	127	124	116	110	106	106	

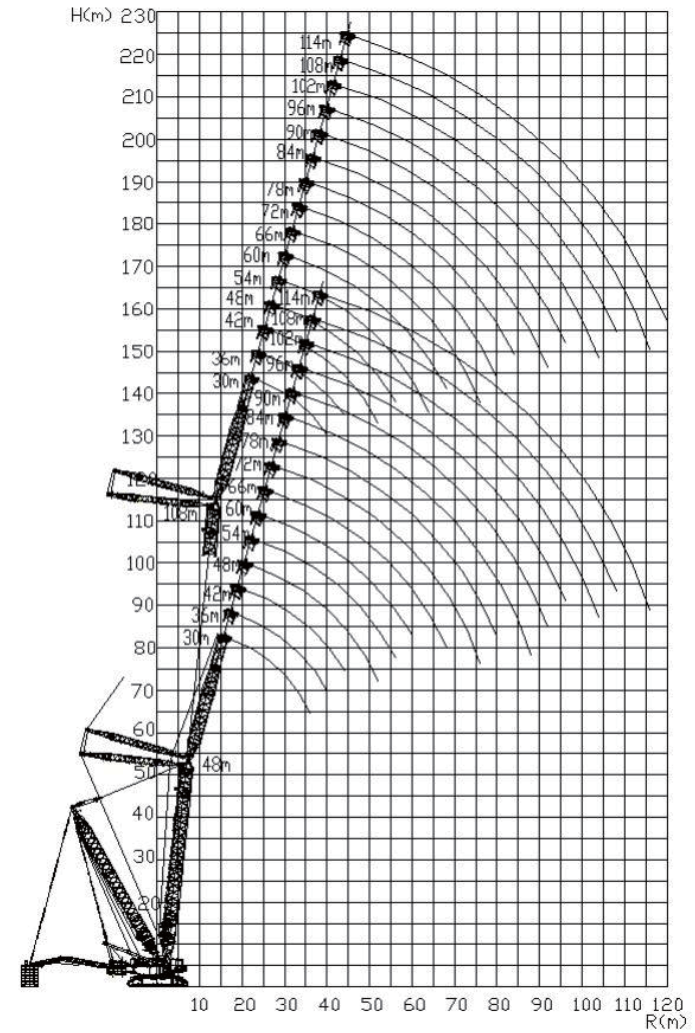
XLC22000 Wind Power Jib Working Range in Superlift Working Condition

Lifting performance table

XLC22000 SHJ Wind Power Jib in Superlift Working Condition
 (Turntable counterweight 260t +car-body counterweight 90t+superlift counterweight 560t,
 Superlift mast radius 20m, Superlift counterweight radius 30m)

Radius (M)	Boom Length (m)																
	90	96	102	108	114	120	126	132	138	144	150	156	162	165	168	171	
104				126	128	128	125	122	122	119	119	118	113	108	104	104	
108				121	119	119	119	116	115	112	113	111	106	106	102	102	
112					112	112	112	109	108	105	106	104	101	102	99	97	
116						106	103	102	101	98	99	97	97	96	92	91	
120							97	95	95	92	93	93	91	89	86	85	
124								87	89	86	87	87	85	83	81	79	
128								80	82	80	81	81	81	79	76	74	
132									75	74	77	76	76	74	70	69	
136										68	72	71	71	69	66	64	
140											66	66	66	64	61	59	
144											59	60	61	59	57	55	
148												55	56	55	53	51	
152													51	50	49	47	
156														45	44	43	
160															39	38	

SL working condition tower jib



tower jib working radius under SL working condition of XLC22000 (main boom angle 85°)

Lifting performance table

XLC22000 SHW SL working condition tower jib lifting performance table
 (Main boom length 54m, main boom angle 85° , 260t turntable counterweight +90t car-body counterweight + 560t SL counterweight, SL mast radius 20m, SL counterweight radius 30m)

Radius (m)	Tower jib length/m (m)								Radius (m)
	30	42	54	66	78	90	102	114	
18	650								18
19	650								19
20	650								20
22	650	623							22
24	650	612							24
26	620	595	452						26
28	560	562	450	329					28
30	511	525	447	328					30
32	460	483	436	327	240				32
34	404	446	414	325	239				34
36	345	414	392	323	237	174			36
38		386	372	321	236	173			38
40		357	353	313	235	172	130		40
44		298	313	289	231	169	128	93	44
48		238	277	263	226	167	124	91	48
52			241	238	216	164	122	89	52
56			206	213	200	161	120	87	56
60				194	184	158	118	84	60
64				172	168	152	115	82	64
68				148	154	140	113	80	68
72					141	128	110	78	72
76					129	117	108	76	76
80					113	108	106	74	80
84						99	101	72	84
88						91	94	70	88
92						84	87	68	92
96							81	67	96
100							75	62	100
104							67	55	104
108								50	108
112								45	112
116								41	116

Lifting performance table

XLC22000 SHW SL working condition tower jib lifting performance table
 (Main boom length 72m, Main boom angle 85° , 260t turntable counterweight +90t car-body counterweight +560t SL counterweight, SL mast radius 20m, SL counterweight radius 30m)

Radius (m)	Tower jib length/m (m)								Radius (m)
	30	42	54	66	78	90	102	114	
20	596								20
22	583								22
24	568	456							24
26	529	450	355						26
28	492	442	352						28
30	455	416	349	268					30
32	420	390	345	267					32
34	390	364	329	266	201				34
36	358	342	313	264	201				36
38	327	319	298	262	200	150			38
40		298	279	254	199	150	113		40
44		259	249	232	196	148	112	82	44
48		225	220	210	190	146	110	81	48
52			196	189	176	144	109	79	52
56			173	169	160	142	107	78	56
60			153	153	147	135	105	76	60
64				137	134	124	103	75	64
68				122	121	115	102	73	68
72				110	109	106	98	71	72
76					101	97	92	70	76
80					91	89	85	68	80
84					82	81	79	66	84
88						75	72	65	88
92						68	67	63	92
96						62	62	59	96
100							57	54	100
104							52	51	104
108								47	108
112								43	112
116								39	116

Lifting performance table

XLC22000 SHW SL working condition tower jib lifting performance table
(Main boom length 90m, Main boom angle 85°, 260t turntable counterweight +90t car-body counterweight +560t SL counterweight, SL mast radius 20m, SL counterweight radius 30m)

Radius (m)	Tower jib length/m (m)								Radius (m)
	30	42	54	66	78	90	102	114	
22	412								22
24	403								24
26	389	325							26
28	379	319	263						28
30	362	313	260						30
32	339	307	256	206					32
34	316	292	252	204					34
36	293	274	248	202	160				36
38	273	258	238	200	159	121			38
40		242	225	197	158	121			40
44		212	202	187	155	120	92		44
48		186	180	169	152	118	92	67	48
52			159	152	142	116	90	66	52
56			142	138	130	114	89	65	56
60			125	123	118	108	87	64	60
64				111	107	100	86	63	64
68				100	98	92	84	62	68
72				90	89	85	79	60	72
76					81	77	73	59	76
80					73	71	67	57	80
84					66	65	62	56	84
88						59	57	54	88
92						54	52	49	92
96						49	48	45	96
100							44	42	100
104							40	38	104
108							36	35	108
112								32	112
116								29	116
120								27	120

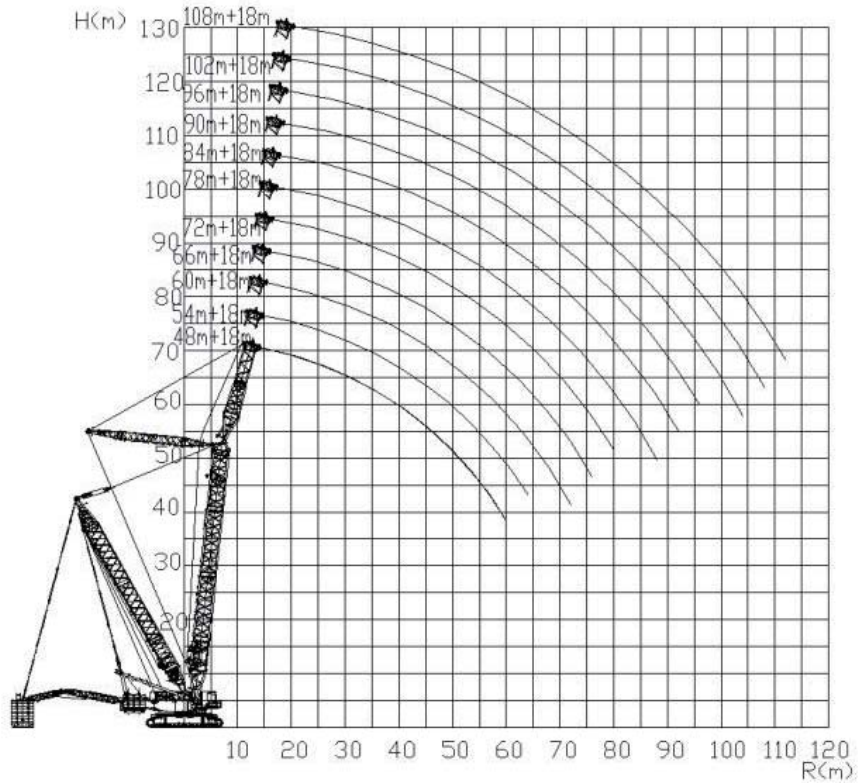
Lifting performance table

XLC22000 SHW SL working condition tower jib lifting performance table
(Main boom length 108m, Main boom angle 85°, 260t turntable counterweight +90t car-body counterweight +560t SL counterweight, SL mast radius 20m, SL counterweight radius 30m)

Radius (m)	Tower jib length/m (m)								Radius (m)
	30	42	54	66	78	90	102	114	
24	291								24
26	284	240							26
28	276	235							28
30	268	230	191						30
32	260	223	188						32
34	251	218	185	153					34
36	242	212	181	151	121				36
38	227	206	177	148	120				38
40	213	197	173	146	119	94			40
44		176	163	141	116	92	71		44
48		156	148	135	113	90	70	52	48
52		138	133	124	109	88	69	51	52
56			118	112	104	85	67	50	56
60			105	102	96	83	66	49	60
64			95	92	88	80	64	47	64
68				83	80	74	62	46	68
72				75	73	68	60	45	72
76				68	66	62	58	43	76
80					60	57	53	42	80
84					55	52	49	41	84
88						47	45	39	88
92						43	41	38	92
96						39	37	35	96
100							34	32	100
104							31	29	104
108							28	26	108
112								24	112
116								22	116
120								19	120

Lifting performance table

working condition special jib



XLC22000 SL working condition special jib working radius

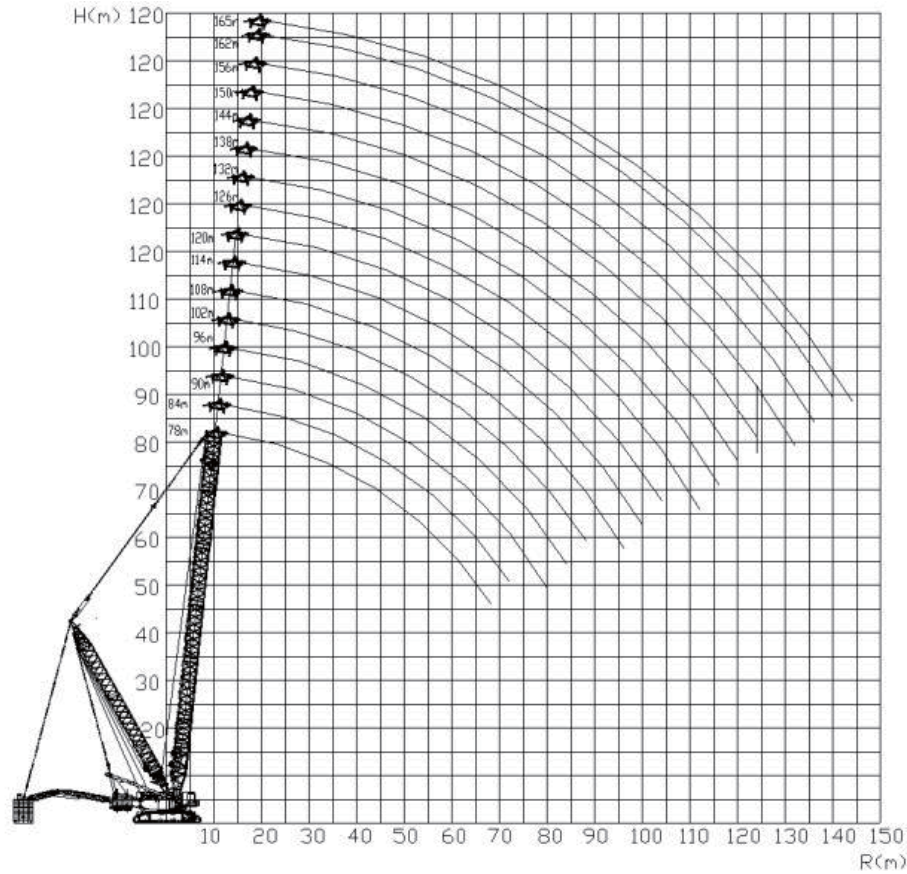
Lifting performance table

XLC22000 SHVJ SL working condition special jib lifting performance
 (260t turntable counterweight +90t car-body counterweight +560t SL counterweight,SL mast radius 20m,SL counterweight radius 30m)

Radius (m)	Main boom length/m (special jib length 18m,offset angle 15°)											Radius (m)		
	48	54	60	66	72	78	84	90	96	102	108			
16	650	650										16		
17	650	650	650	650								17		
18	650	650	650	650	642							18		
19	650	650	650	650	642	590	540					19		
20	650	650	650	650	642	590	540	468	420	376		20		
22	650	650	650	650	642	590	541	471	422	378	341	22		
24	640	650	650	650	642	590	542	474	424	379	342	24		
26	612	650	650	650	642	590	543	476	426	380	343	26		
28	585	636	636	650	642	590	544	478	428	381	344	28		
30	562	611	613	626	629	590	545	481	430	382	345	30		
32	540	588	591	605	608	590	546	483	432	383	345	32		
34	520	566	566	565	564	564	548	485	433	383	346	34		
36	502	529	528	527	526	526	522	486	435	384	346	36		
38	485	495	494	494	492	491	488	487	436	385	347	38		
40	467	465	464	464	462	461	457	457	438	385	347	40		
44	415	413	412	411	410	409	406	404	402	385	348	44		
48	372	370	368	368	366	365	362	361	359	357	341	48		
52	330	334	332	332	330	329	326	324	322	321	319	52		
56	287	303	301	301	299	298	294	293	291	290	287	56		
60	246	273	274	274	272	271	267	266	264	263	260	60		
64		238	250	250	248	247	244	242	240	239	237	64		
68			228	229	227	226	223	222	219	218	216	68		
72			197	211	209	208	205	203	201	200	198	72		
76				190	192	191	188	187	184	184	181	76		
80					177	177	173	172	169	169	166	80		
84						163	160	158	156	155	153	84		
88							149	147	146	144	143	88		
92								136	135	132	132	92		
96									124	122	122	96		
100										112	112	100		
104											103	101	104	
108												95	93	108
112													85	112

Lifting performance table

SL working condition single/double heavy duty boom



XLC22000 SL working condition single/double heavy duty boom working radius

Lifting performance table

XLC22000 SHB-DS SL working condition single/double heavy duty boom lifting performance table (260t turntable counterweight +90t car-body counterweight +560t SL counterweight, SL mast radius 20m, SL counterweight radius 30m)

Radius (m)	Single/double heavy duty main boom length m																
	78	84	90	96	102	108	114	120	126	132	138	144	150	156	162	165	
12	917																
13	917	840	790														
14	917	840	790	745	675												
15	917	840	790	745	675	656											
16	917	840	790	745	680	656	628	585									
17	917	840	790	745	685	656	628	585	530								
18	917	840	790	745	695	656	628	583	530	495	449						
19	917	840	790	745	695	656	628	582	529	491	445	420					
20	917	840	790	745	695	656	628	580	528	487	441	418	382	342			
22	888	840	790	745	695	656	628	577	528	479	434	417	382	342	305	289	
24	811	808	790	740	695	656	628	572	528	471	426	412	382	342	302	287	
26	745	742	739	729	695	656	628	567	527	462	419	405	380	341	302	285	
28	687	685	682	679	663	630	623	555	517	453	411	399	376	341	298	282	
30	636	633	631	628	619	600	582	533	508	445	402	393	372	339	293	278	
32	590	587	585	582	580	562	546	509	495	437	393	387	368	335	291	274	
34	550	547	545	542	540	529	514	489	480	429	380	381	363	332	288	271	
36	514	512	509	507	504	501	485	470	452	415	368	375	358	328	284	270	
38	482	480	477	475	472	469	467	445	433	400	356	369	351	324	281	268	
40	453	451	449	446	444	441	438	422	411	390	345	355	331	320	276	265	
44	404	401	400	397	394	391	388	385	383	356	325	330	312	313	268	262	
48	361	359	358	356	353	350	348	345	343	334	307	307	289	291	260	260	
52	326	324	324	321	319	316	313	310	308	305	291	291	268	267	252	249	
56	296	294	294	291	289	286	284	281	279	276	276	276	270	250	245	233	245
60	270	268	268	265	265	262	259	255	253	250	248	245	235	239	230	227	
64	247	245	245	243	242	239	237	234	232	228	226	222	220	217	217	215	
68	227	225	225	222	222	219	217	214	212	208	206	203	201	198	198	196	
72		207	207	205	205	202	200	197	195	192	188	185	183	180	180	178	
76			191	189	189	186	184	181	179	176	173	170	168	165	165	163	

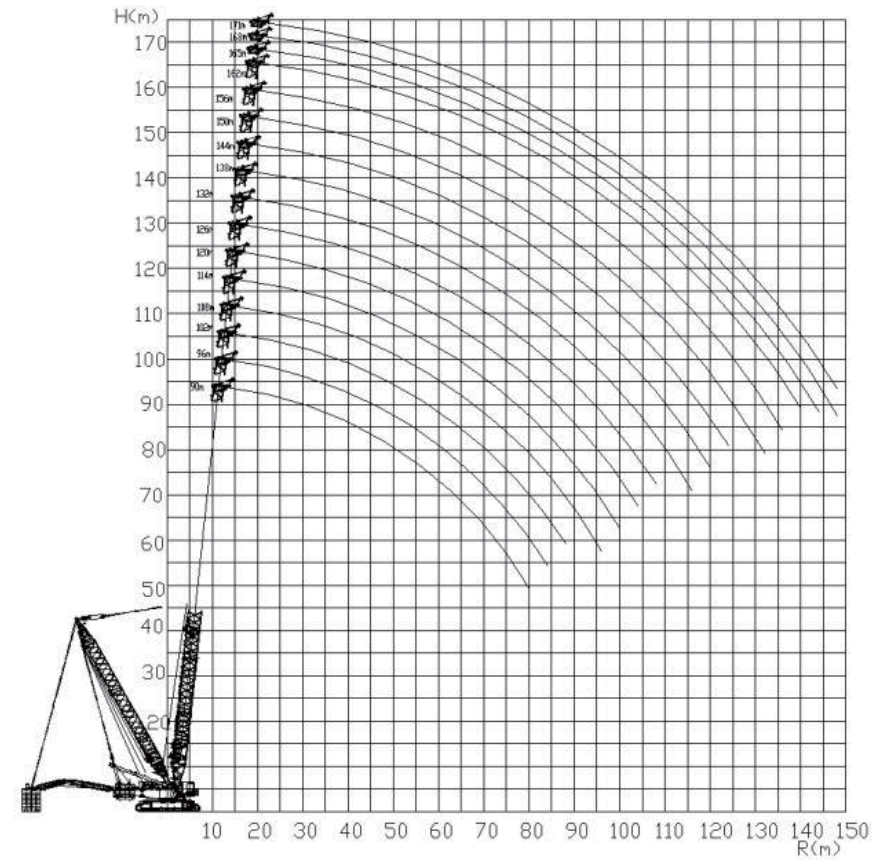
Lifting performance table

XLC22000 SHB-DS SL working condition single/double heavy duty boom lifting performance table
 (260t turntable counterweight +90t car-body counterweight +560t SL counterweight,SL mast radius 20m,SL counterweight radius30m)

Radius (m)	Single/double heavy duty main boom length m															
	78	84	90	96	102	108	114	120	126	132	138	144	150	156	162	165
80			177	175	175	172	170	167	165	162	160	157	153	150	150	149
84				162	162	159	158	155	152	149	147	143	141	138	138	136
88					15	14	14	14	14	13	13	13	13	12	12	12
92						13	13	13	13	12	12	12	11	11	11	11
96						12	12	12	12	11	11	11	10	10	10	10
100								11	11	10	10	10	10	98	98	97
104								10	10	10	99	95	93	90	90	88
108									96	93	91	88	85	82	82	81
112									89	86	84	81	78	75	75	74
116										79	77	74	72	69	69	67
120											71	68	66	62	62	61
124												62	60	57	57	55
128													54	51	51	50
132														49	46	45
136															41	40
140																37
144																31

Lifting performance table

SL working condition single/double light duty boom



XLC22000 SL working condition single/double lightduty boom working radius

Lifting performance table

XLC22000 SLB-DS SL working condition single/double light duty boom lifting performance table (260t turntable counterweight +90t car-body counterweight +560t SL counterweight,SL mast radius 20m ,SL counterweight radius 30m)

Radius (m)	Single/double light duty main boom length m																
	90	96	102	108	114	120	126	132	138	144	150	156	162	165	168	171	
13	650																
14	650	650	650														
15	650	650	650	650													
16	650	650	650	650	612	585											
17	650	650	650	650	612	585	530										
18	650	650	650	650	612	585	530	522	480								
19	650	650	650	650	612	585	530	522	480	420							
20	650	650	650	650	612	585	530	518	480	417	388	352					
22	650	650	650	650	612	585	527	512	480	410	385	352	317	300	283	265	
24	650	650	650	650	612	585	517	505	478	403	381	352	315	298	281	261	
26	650	650	650	650	612	585	506	498	472	396	376	352	312	296	280	257	
28	650	650	650	650	612	572	495	490	467	389	370	352	308	294	278	253	
30	639	636	633	618	605	549	485	480	462	382	365	352	305	291	276	249	
32	592	590	587	585	568	526	471	470	455	376	359	345	300	289	273	244	
34	552	550	547	545	542	505	457	444	450	369	354	340	297	286	271	241	
36	517	514	512	509	506	489	442	432	440	363	349	336	292	284	268	237	
38	485	483	480	477	474	469	428	416	416	356	343	333	288	281	265	233	
40	456	454	451	449	446	443	417	400	409	350	338	329	284	278	262	229	
44	408	405	402	400	397	393	385	371	374	335	323	325	276	272	255	222	
48	367	365	362	358	355	353	350	348	344	318	300	314	268	264	249	215	
52	333	330	327	324	321	318	315	313	310	303	279	290	260	257	243	208	
56	303	301	298	296	293	289	286	284	281	275	262	268	253	251	240	202	
60	277	275	272	270	267	264	261	259	255	253	245	247	242	234	231	196	
64	255	253	250	247	244	242	239	237	234	231	228	225	222	222	218	190	
68	236	233	231	228	225	222	219	217	214	211	208	205	203	204	203	183	
72	218	215	213	210	208	205	202	200	197	194	191	187	185	186	185	176	
76	202	200	198	195	192	190	186	184	181	178	175	172	170	171	170	161	
80	188	185	183	181	178	175	172	170	167	165	162	159	156	158	156	148	
84		172	171	168	166	163	160	158	155	152	148	145	143	145	143	136	
88			160	157	153	151	148	146	143	140	137	134	132	133	132	125	

Lifting performance table

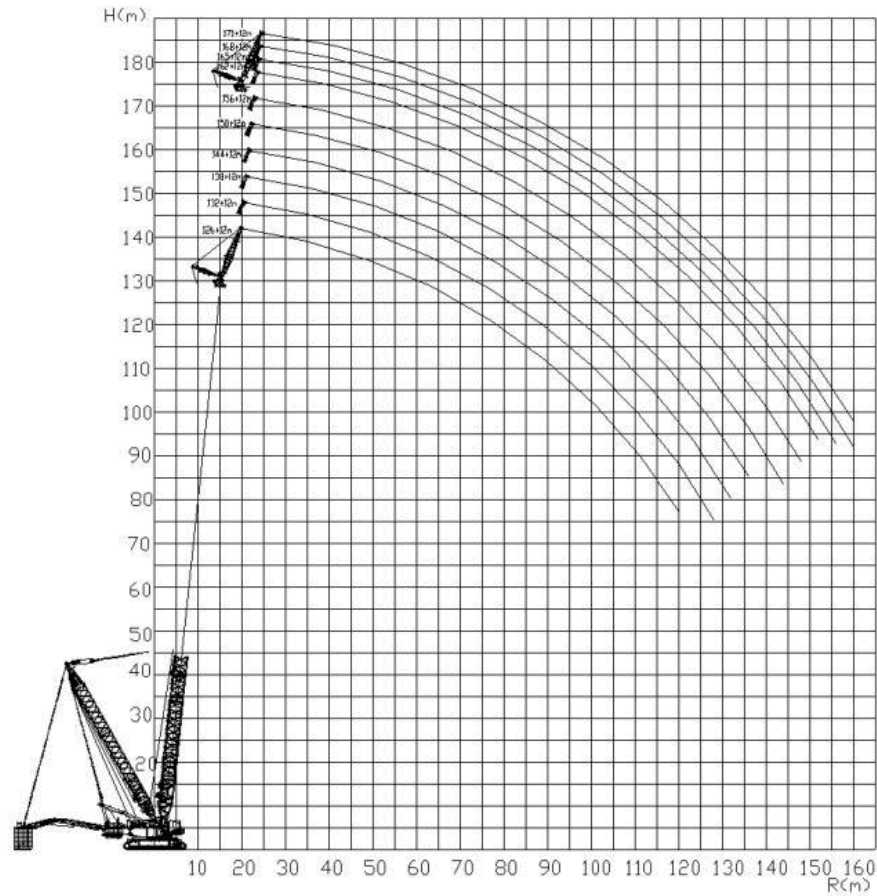
XLC22000 SLB-DS SL working condition single/double light duty boom lifting performance table (260t turntable counterweight +90t car-body counterweight +560t SL counterweight,SL mast radius 20m ,SL counterweight radius 30m)

Radius (m)	Single/double light duty main boom length m																
	90	96	102	108	114	120	126	132	138	144	150	156	162	165	168	171	
92				14	14	14	13	13	13	13	12	12	12	12	12	11	
96				13	13	13	12	12	12	12	12	11	11	11	11	10	
100					12	12	11	11	11	11	10	10	10	10	10	98	
104						11	11	10	10	10	10	97	95	97	95	91	
108							10	10	98	96	93	90	87	89	88	83	
112								95	91	89	86	83	80	82	81	77	
116								88	85	83	79	76	74	76	74	71	
120									79	77	73	70	68	70	68	65	
124										71	68	64	62	64	62	59	
128											62	59	57	58	57	54	
132											57	54	52	53	52	49	
136												49	47	49	47	45	
140													42	44	43	41	
144														40	38	36	
148															34	33	

Lifting performance table

Lifting performance table

SL working condition single/double wind power jib



XLC22000 SL working condition single/double wind power jib working radius

XLC22000 SHJ-DS SL working condition single/double wind power jib lifting performance table (260t turntable counterweight +90t car-body counterweight +560t SL counterweight,SL mast radius 20m,SL counterweight radius 30m)

Radius (m)	Single double main boom length/m (winf power jib length 12m, offset angle 15°)									
	126	132	138	144	150	156	162	165	168	171
20	310	305								
22	305	300	278	260						
24	298	295	274	255	255	253	236	233		
26	290	285	272	253	251	251	233	230	220	208
28	281	280	264	252	251	251	230	228	219	206
30	272	270	255	242	251	250	227	225	218	205
32	266	265	253	242	251	250	224	222	216	202
34	255	252	252	237	247	248	221	220	215	200
36	253	253	251	227	244	245	219	217	212	197
38	247	248	245	225	242	242	214	216	209	195
40	239	245	239	219	235	241	212	210	208	192
44	228	235	228	209	225	233	206	208	203	187
48	219	225	215	196	220	224	195	200	197	182
52	210	216	207	188	212	216	192	194	188	177
56	201	208	199	181	196	208	179	189	190	172
60	193	203	194	175	194	200	174	176	177	168
64	187	196	186	170	190	194	169	171	173	163
68	181	190	181	164	182	186	166	166	168	160
72	175	183	175	159	172	181	161	162	168	154
76	170	177	170	154	165	175	156	158	163	147
80	165	172	165	150	160	162	152	151	158	141
84	161	163	156	146	151	151	146	143	146	132
88	155	151	148	142	142	139	137	138	137	128
92	144	141	138	131	132	129	127	128	127	123
96	135	131	128	126	123	119	116	118	116	115
100	125	122	118	116	113	110	108	109	108	106

XLC22000 SHJ-DS SL working condition single/double wind power jib lifting performance table (260t turntable counterweight +90t car-body counterweight +560t SL counterweight,SL mast radius 20m,SL counterweight radius 30m)

Radius (m)	Single double main boom length/m (winf power jib length 12m, offset angle 15°)									
	126	132	138	144	150	156	162	165	168	171
104	117	113	110	108	105	102	100	101	100	99
108	109	106	103	101	98	95	92	94	92	91
112	102	99	96	94	91	88	85	87	85	84
116	96	93	90	87	84	81	79	80	79	77
120	89	87	83	81	78	75	72	74	73	71
124		81	78	75	72	69	67	68	67	65
128		75	72	70	67	64	61	63	61	60
132			67	65	62	59	56	58	56	55
136				60	57	54	51	53	51	50
140					52	49	47	48	47	46
144					48	45	42	44	43	41
148						41	38	40	38	37
152							34	36	35	33
156								32	31	30
160									27	26

Notes:

1. We reserves the right to make changes to the above content, subject to the actual item.
2. This technical specification only provides partial working conditions and performance.
3. The standard performance provided in this technical specification. If users have higher performance requirements or other special needs, please contact us.