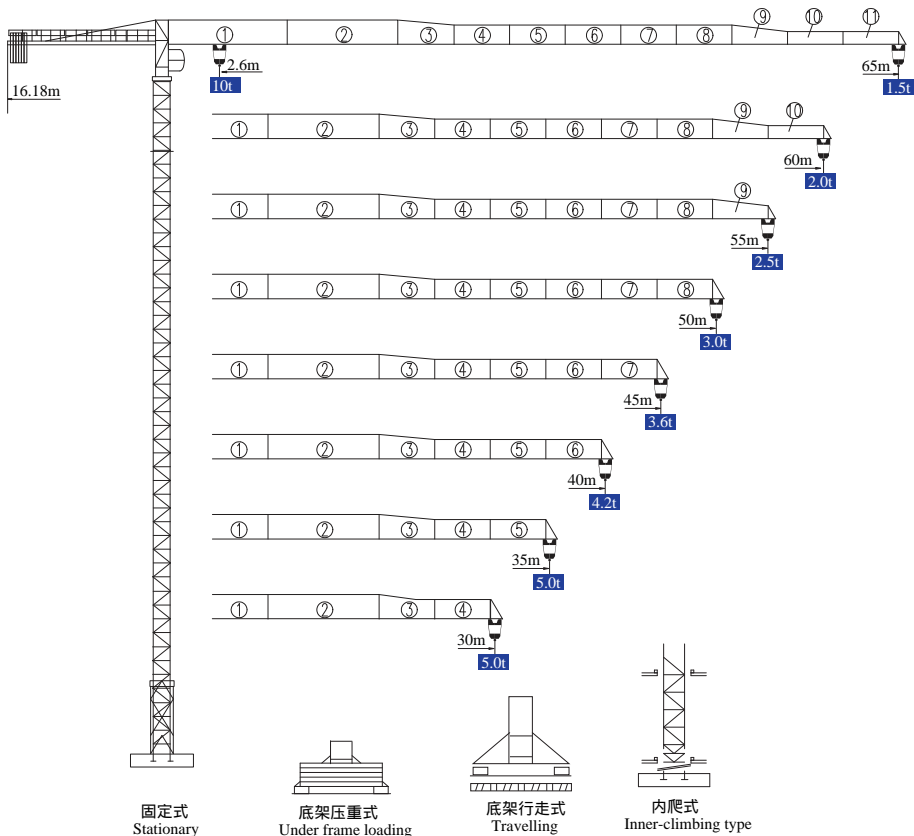


# XGT6515-10 XGT6515L-10

## 外形尺寸 DIMENSIONS



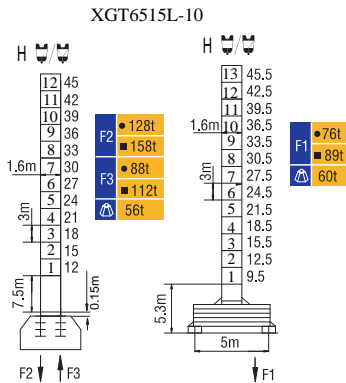
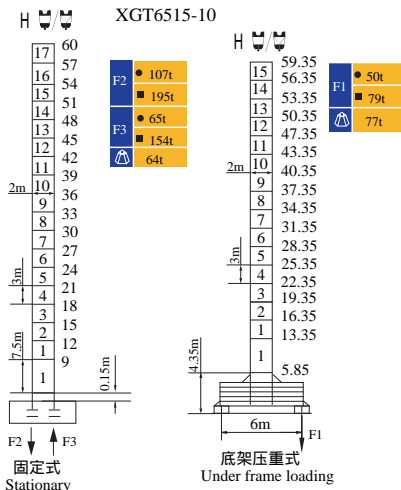
\* 可变换的其它安装方式同我们协商 Mounting possibilities Consult us

平头系列 Topless

# XGT6515-10

# XGT6515L-10

## 技术状态 STATUS

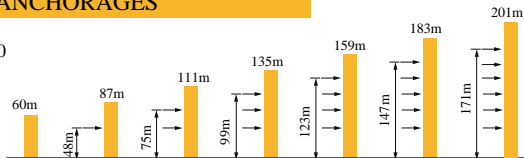


H (m) 吊钩高度 Height of The Hook ● 工作状态 In service ■ 非工作状态  
 ▲ 最大臂长最大独立高度时的整机自重 (不含配重、压重、吊重)

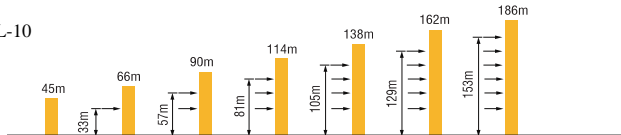
Weight with max free-standing height and max jib (without counter-weight and load)

## 附着 ANCHORAGES

XGT6515-10



















XGT6515L-10



\* 如需达到更高的高度, 请与我们联系! For greater heights, consult us!


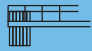

# XGT6515-10 XGT6515L-10

## 起重特性 LOAD DIAGRAMS

起重臂 (m) jib	R <sub>min</sub>	R/C <sub>max</sub>	C <sub>max</sub>	幅度 (m) Range											
				15	20	25	30	35	40	45	50	55	60	65	
65m		2.6	27.0	5.0t	5000			4500	3690	3090	2630	2260	1960	1710	1500
		2.6	14.0	10.0t	9410	7210	5490	4350	3540	2940	2480	2110	1810	1560	1350
60m		2.6	30.0	5.0t	5000			4190	3530	3020	2610	2270	2000		
		2.6	16.0	10.0t	10000	8100	6190	4930	4040	3380	2870	2460	2120	1850	
55m		2.6	32.0	5.0t	5000			4540	3840	3290	2850	2500			
		2.6	17.0	10.0t	10000	8730	6690	5350	4390	3690	3140	2700	2350		
50m		2.6	33.0	5.0t	5000			4750	4020	3450	3000				
		2.6	18.0	10.0t	10000	9090	6980	5590	4600	3870	3300	2850			
45m		2.6	34.0	5.0t	5000			4940	4180	3600					
		2.6	19.0	10.0t	10000	9430	7250	5810	4790	4030	3450				
40m		2.6	34.0	5.0t	5000			4960	4200						
		2.6	19.0	10.0t	10000	9460	7270	5830	4810	4050					
35m		2.6	35.0	5.0t	5000										
		2.6	19.0	10.0t	10000	9530	7320	5870	4850						
30m		2.6	32.0	5.0t	5000										
		2.6	17.0	10.0t	10000	8730	6690	5350							

★ 其他起重性能需求，请与我们联系！Another lifting capacity, consult us!

## 配重配置 BALLAST

Counter-jib ballast		3450 - 3200 - 1600			
		 (kg)	PZ3450	PZ3200	PZ1600
65m	16.18m	18600	4	1	1
60m	16.18m	18600	4	1	1
55m	16.18m	17000	4	1	0
50m	16.18m	15400	4	0	1
45m	16.18m	15150	3	1	1
40m	16.18m	13550	3	1	0
35m	16.18m	11950	3	0	1
30m	16.18m	8400	2	0	1

# XGT6515-10

# XGT6515L-10

## 传动机构 Mechanisms

机构 Mechanisms	图例 Example	机构代号 Model	速度 (m/min) Speed	起重量 (t) Hoist Weight	容绳量 Rope Capacity	功率 (kW) Power	
起升 Hoisting		45JLF25A		0-80	1.7	615m >615m*	45
				0-60	3.5		
				0-40	5.0		
				0-40	3.5		
				0-30	7.0		
				0-20	10		
变幅 Trolleying		4JXF4	0-58r/min			4	
回转 Slewing		JH08T6	0-0.7r/min			2×5.5	
行走 Travelling		RT	0-25m/min			4×4	
电源 Main Supply					~ 380V (±10%) 50Hz		
总功率 (不含顶升和行走) Gross Power (Excluding climbing and travelling)					60kW		

★ 请与我们联系 Consult us, Please!

本样册技术参数不受法律约束, 具体以相应产品说明书为准

These brochure of specifications and data are not legally binding, specific instructions please based on our product manuals.

V. 2017-11A1