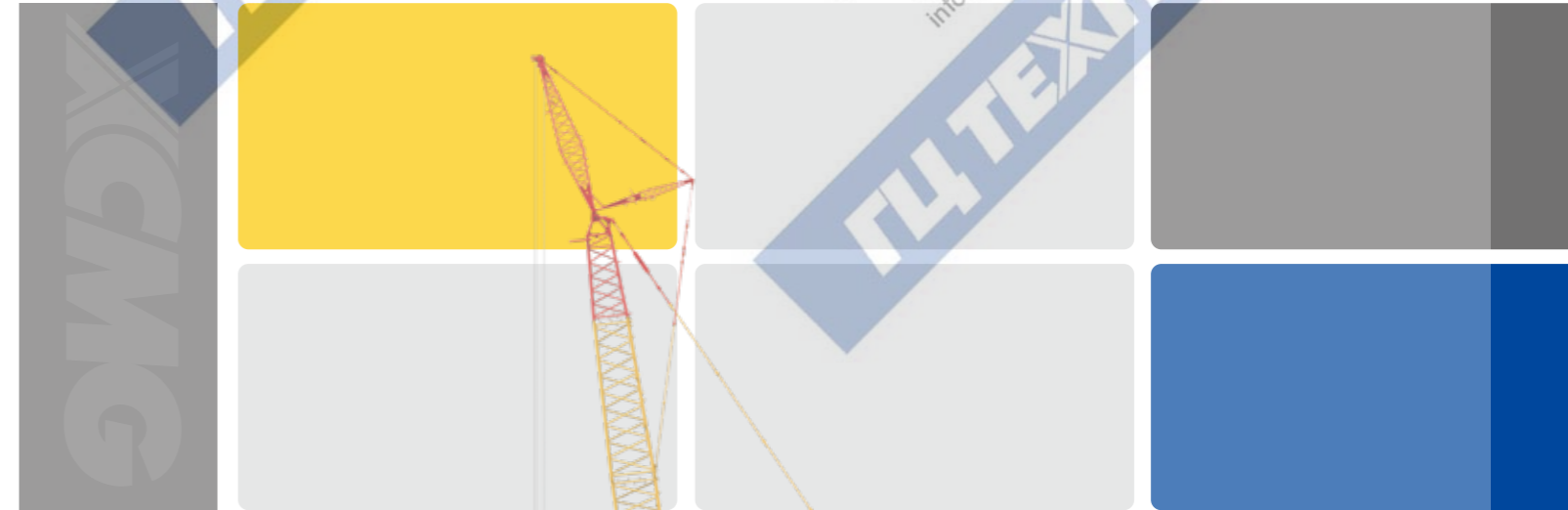


徐工徐工 助您成功
XCMG FOR YOUR SUCCESS



XGC型800t-12000tm 履带起重机
CRAWLER CRANE



地址(Add): 中国江苏省徐州市金山桥经济开发区桃山路19号 邮编(Postal Code): 221004
No.19 Taoshan Road, Economic development zone of jinshanqiao, Xuzhou, Jiangsu Province, China
统一服务热线(Unified service hotline): 86 400-110-9999
销售热线Sales Hotline
销售电话(Sale Tel): 86 0516-87892094
销售传真(Sale Fax): 86 0516-87892074
电子邮件(E-mail): jjyxd@xcmg.com
服务质量投诉电话
(Quality Supervision Tel): 86 0516-87892587

服务热线Service Hotline
服务电话(Service Tel): 86 400-001-5678
服务传真(Service Fax): 86 0516-87892080
备件电话(Service Tel): 86 0516-87892086
备件传真(Service Fax): 86 0516-87892083



欢迎访问徐工商城
省心更省钱一站式



欢迎关注徐工履带起重机官方微信
1. 直接扫码“XCMG_xgj”增加好友
2. 查找公众账号“徐工履带起重机”
3. 直接扫描上方二维码

CONTENTS

目录

P02

- 产品的部件和系统描述
Parts and System Description
- 安全保护措施
Safety Protection Devices
- 配套件明细表
Main Parts List
- 主要技术参数
Main Technical Specifications

P18

- 工况设置
Working Condition Setting
- 标准工况重型主臂臂节组合/重型主臂
Working condition setting
标准工况重型主臂起重性能表
Standard Mode Heavy Boom Lifting Load Chart
- 标准工况轻型主臂臂节组合/轻型主臂
Standard Mode Light Boom Combinations/Light Boom
- 标准工况轻型主臂起重性能表
Standard Mode Light Boom Lifting Load Chart
- 标准工况风电副臂臂节组合/风电副臂
Standard Mode Boom Point For Wind Power Combinations
- 标准工况风电副臂性能表
Standard Wind Power Jib Lifting Load Chart

P27

- 标准工况塔式副臂臂节组合/塔式副臂
Standard Mode Tower Jib Combinations/Tower Jib
- 标准工况塔式副臂性能表
Standard Mode Tower Jib Lifting Load Chart
- 超起工况重型主臂臂节组合/重型主臂
SL Mode Heavy Boom Combinations/Heavy Boom
- 超起工况重型主臂起重性能表
SL Mode Heavy Boom Lifting Load Chart
- 超起工况轻型主臂臂节组合/轻型主臂
SL Mode Light Boom Combinations/Light Boom
- 超起工况轻型主臂起重性能表
SL Mode Light Boom Lifting Load Chart
- 超起工况风电副臂臂节组合/风电副臂
SL Mode Wind power jib Combinations/Wind power jib
- 超起工况风电副臂起重性能表
SL Mode Wind power Jib Lifting Load Chart
- 超起工况塔式副臂臂节组合/塔式副臂
SL Mode Tower jib Combinations/Tower jib
- 超起工况塔式副臂起重性能表
SL Mode Tower Jib Lifting Load Chart
- SHVJ-超起专用副臂臂节组合/超起专用副臂
SHVJ- SL special jib combinations/SL special jib
- SHVJ-超起专用副臂起重性能表
SHVJ-SL special jib lifting capacity charts

02

XGC型800t-12000tm履带起重机 XGC型800t-12000tm CRAWLER CRANE

- P03-P08 产品的部件和系统描述
Parts and System Description
- P09-P10 安全保护措施
Safety Protection Devices
- P11-P11 配套件明细表
Main Parts List
- P13-P15 主要技术参数
Main Technical Specifications
- P16-P17 工况设置
Working condition setting

产品的部件和系统描述
Parts and System Description

01 臂架变幅构件
Boom luffing components

采用高强度拉板结构，由两组拉板构成。拉板由高强度钢一次切割成型，安全系数高。
Boom luffing component is composed of two-group pendant, made of high-strength steel and one-time cutting; with high safety factor.

02 桅杆
Mast

标准型桅杆采用箱型结构，超起型桅杆采用桁架式结构，整体稳定性好。桅杆配置顶升机构，超起桅杆配置液压自动控制防后倾机构。超起型桅杆能实现主臂的悬空接臂功能。
Mast is box-type of twin limb structure, with additional beam between two limbs for good overall stability. Mast is equipped with raising device; SL mast is equipped with automatic backstop system. SL mast can realize boom suspending connection function.

03 转台
Turntable

采用高强度的箱型结构，在中间连有工字型和箱型横梁，在回转中心附近布置有加强板。
Turntable is box type structure made of domestic high-strength steel plate, connected with "工" type and box type beam in the middle of it, and arranged with reinforced plate near the slewing center.

04 机构组成
Mechanism composition

本机的机构配置及用途如下表
Crane mechanism and application refer to the table below:

序号	机构名称 Mechanism	用途 Application	布置位置 Location
1	主起升机构 Main hoist winch	主、副臂时起升作业 Boom, jib lifting operation	转台回转中心附近 Near the turntable slewing center
2	副起升机构 Auxiliary hoist winch	主、副臂时起升作业 Boom luffing operation	主起升之后 At the rear of main hoist winch
3	主臂变幅机构 Main boom luffing mechanism	主臂变幅 SL boom luffing operation	转台中后方 At the middle and rear position of turntable
4	超起变幅机构 SL luffing mechanism	超起主臂变幅 SL boom luffing operation	超起桅杆卷扬节 At the middle and rear of turntable
5	回转机构 Slewing mechanism	上车回转 Superstructure slewing operation	转台前方 At the front side of turntable
6	行走机构 Travel mechanism	整机行走 Overall crane travel	履带驱动轮 Driving roller
7	穿绳机构 (选装) Reeving mechanism (optional)	辅助起升变幅机构安装钢丝绳 Assistant to the installation of hoisting and luffing mechanism	转台前面 At the front of turntable
8	塔臂变幅机构 Tower jib luffing mechanism	塔式副臂变幅 Tower jib luffing	主臂底节 Boom butt
9	单滑轮起升机构 Single pulley hoisting mechanism	副钩起落 Lowering and raising of auxiliary crane	主臂底节 Boom butt

Официальный дилер спецтехники XCMG в России
+7 (495) 641-80-47
info@techno-xcmg.ru

05 起升机构 Hoist winch

主副起升机构型号相同，单独驱动，大起重量时主副起升机构可同步工作。起升机构采用片式常闭制动器，内藏式减速机，变量马达驱动。主副起升采用箱型支架，销轴方式与转台连接。钢丝绳均为抗旋转钢丝绳。

主起升机构，钢丝绳直径 $\varnothing 28$ mm;

副起升机构，钢丝绳直径 $\varnothing 28$ mm;

The models of the main and auxiliary hoisting mechanisms are the same, both are separately driven, The main and secondary lifting mechanism can work synchronously for large lifted load. The lifting mechanism adopts disc normally closed brake, internal reducer and variable motor drive. The main and the auxiliary hoisting mechanism adopt box bracket and pin shaft connection with turntable. The wire rope is anti-rotating wire rope.

Main hoist winch rope, rope diam. $\varnothing 28$ mm;

Auxiliary hoist winch rope, rope diam. $\varnothing 28$ mm;

06 变幅机构 Boom luffing winch

主臂变幅机构采用双联卷筒形式。采用棘轮锁止装置，内藏式减速机，片式常闭制动器，钢丝绳直径 $\varnothing 28$ mm。

超起变幅机构采用棘轮锁止装置，内藏式减速机，片式常闭制动器，钢丝绳直径 $\varnothing 28$ mm。

Boom luffing winch is a twin drum independent drive unit, with ratchet locking device, built-in speed reducer, and disc type constant closed brake. rope diam. $\varnothing 28$ mm.

Super-lift luffing winch has ratchet locking device, built-in speed reducer, and disc type constant closed brake. rope diam. $\varnothing 28$ mm.

07 回转机构 Slewing gear

布置在转台前方，采用两个行星减速机，与回转支承外啮合，液压缓冲，具有自由滑转功能。采用片式常闭制动器，工作可靠，维修方便。

Slewing gear is arranged at front of turntable and made of two planetary reducers, with hydraulic buffering device, and controllable constant-closed disc brake for the function of free-swing.

08 回转支承 Slewing ring

采用三排滚柱式外啮合回转支承，强度高、承载力矩大，维修、保养方便；具有分体功能，通过销轴连接，可实现主机的上下分体，降低主机运输重量。

Slewing ring is 3-row roller type external meshed slewing ring, with high strength, heavy load bearing capacity, and easy for repair and maintenance. split function is realized by connecting through the pin shaft, can achieve the separation of the lower part and the upper part, and reduce the transport weight of basic crane.

09 油缸总成 Oil cylinder assy

臂架与转台的连接、车架与履带梁的连接均采用动力销连接方式，并配置了桅杆顶开油缸和支腿油缸。操纵室设有翻转油缸和旋转油缸。

the connection of boom and turntable, the connection of car-body and track frame, all use power pinning connection, and equipped with mast raising cylinder and outrigger cylinder. Operator's cabin also has tilting cylinder and rotation cylinder.

10 操纵室 Operator's cabin

操纵室按人机工程学设计，安全舒适，装有安全玻璃和保护栏。车窗装有遮阳板，滑动式车门，可调式座椅。配置冷暖空调。

运输时可以将其转动90°放置在转台前方(主臂底节臂卸下)，减小运输宽度。

司机室可上仰20°，便于观察高空作业。

Operator's cabin is ergonomic design, safe and comfortable, with safety glass and guardrail; the window has sun visor, sliding door, and adjustable seat; equipped with air-conditioner;

when the crane is in transport, the operator's cabin can be turned 90° to the front of turntable (boom base removed) so as to reduce transport length; when the crane is in operation, the operator's cabin can be tilted upward 20° for high level vision.

11 车架 Car-body

车架采用高强度钢板、箱型结构，中间设置横隔板，加强其抗扭刚度，结构简单，承载能力强，刚性好。

Car-body is made of high-strength steel and welded in box type structure, with cross panel installed in the middle to strengthen its stiffness against torsion, simple structure, high loading capacity and good rigidity.

12 履带行走装置 Track frame

包括履带梁和四轮一带。履带梁采用箱型结构，与车架连接部位局部加强，中间设置横隔板。

两个履带梁对称设置，装有宽度为1.5m的履带板，可同步操作，也可单独操纵，以实现直行和转弯。行走减速机驱动，采用内藏式行星齿轮减速机，变量马达驱动。

Crawler travel unit consists of track frame, track shoe, track roller, drive sprocket, idler roller and travel motor. Track frame is box-type structure, the connection place to frame is partially strengthened, with cross panel installed in the middle of it.

Two crawler tracks are symmetrically arranged, equipped with track board with width of 1.5m, can be operated synchronously or independently to achieve straight drive and turning around. Crawler travel unit has German imported built-in planetary reducer and hydraulic release service brake, each reducer is driven by two German imported axial piston variable motors.

Официальный дилер спецтехники XCMG в России
+7 (495) 641-80-47
info@techno-xcmg.ru

Официальный дилер спецтехники XCMG в России
+7 (495) 641-80-47
info@techno-xcmg.ru

Официальный дилер спецтехники XCMG в России
+7 (495) 641-80-47
info@techno-xcmg.ru

Официальный дилер спецтехники XCMG в России
+7 (495) 641-80-47
info@techno-xcmg.ru

13 液压系统 Hydraulic System

采用开闭式相结合、电比例先导变量泵控系统，系统稳定，速度精调特性好。主副起升、行走、主副臂变幅开式泵控系统。回转采用闭式泵控系统，无须平衡阀和换向阀，传动平稳无冲击。对于调速范围大的主副起升和行走机构，采用变量马达驱动。变量马达+变量泵控系统，可以对运动速度实现精确调控，具有良好的微动性。

Combination of closed/open type system with electronic proportional pilot control and variable displacement pump system, good system stability and fine speed regulation. Main/auxiliary hoist winch, boom/jib luffing winch, travel unit are of open type pump control system. Slewing gear is closed type pump control system, no need of balance valve and change valve, smooth drive and no impact. Variable displacement motor drive is used for main/auxiliary hoist winch and travel unit with large range of speed regulation. Variable displacement motor + variable displacement pump control system can have accurate regulation for movement speed, and with good fine motion.

14 电气系统 Electric System

电气系统主要包括如下部分：发动机控制、监测仪表、辅助设备、液压系统控制、力矩限制及安全监控等。电气系统的构成：常规电气系统和PLC控制系统。常规电气系统包括电源、起动机控制、发动机控制和状态监测、驾驶室空调及音响、照明（灯光）、雨刮器、对讲机等。PLC控制系统包括主副卷扬、回转、主臂变幅、左右行走及司机室旋转、翻转等动作的控制，所有动作通过PLC逻辑控制。

Electric system mainly includes: operation control and safety monitoring for engine, instrument, auxiliary equipment, hydraulic system and load moment limiter. Electric system composition: conventional electric system and PLC monitoring system. Conventional electric system including power supply, start control, engine control and state monitoring, cabin air-conditioner and acoustics, illumination (lamp), rain wiper, and interphone. PLC control system includes main/auxiliary winch, slewing gear, boom luffing, left/right crawler travel, cabin rotation/tilting. All movements use electro-hydraulic proportional control technology, and with PLC logic control.

15 发动机系统 Engine System

型式：国际知名品牌增压、中冷、电控发动机；
环保性：符合欧洲III标准；
燃油箱容积：880L

Manufacturer: famous brand, turbocharged, inter-cooled and electronic injection;
Environmental: comply with Euro III emission regulation;
Fuel tank capacity: 880L.

16 平衡重 Counterweight

平衡重包括车身平衡重、转台平衡重、超起平衡重。
Counterweight includes car-body counterweight, turntable counterweight, SL counterweight.

17 吊钩 Hook Block

吊钩有多种，常用配置如下表：
There are a variety of hooks, commonly configured as follows:

名称 Name	800t	500t	240t	50t	16t
自重 (t) Dead weight (t)	21	13.5	12.5	-	-

注：250t吊钩为组合式吊钩，可以拆成100t吊钩；800t吊钩为组合式吊钩，可以拆成400t吊钩；500t吊钩为组合式吊钩，可以拆成250t吊钩。

Notes: 250t hook is a combination hook, which can be disassembled into 100t hook. 800t hook is a combination hook, which can be dismantled into 400t hook. The 500t hook is a combination hook, which can be disassembled into 250t hook.

18 集中润滑系统 Centralized Lubrication System

采用递进式集中润滑系统，电脑编程控制，能够自动、逐点加注润滑油，保证各润滑点油料充足，使车辆保养更加轻松、方便。

The centralized lubrication system is a progressive lubrication system, with computer programming, can automatically point-to-point lubricate grease, ensure each lubrication point with enough grease, and make vehicle maintenance easy and relaxed.

安全保护措施 Safety Protection Devices

安全保护措施 / Safety Protection Devices

安全装置包括力矩限制器、转台回转锁销装置、起重臂防后翻装置、起升高度限位装置、风速仪、水平仪、液压系统的溢流阀、平衡阀、双向液压锁、回转警告、行走警告、防雷击保护装置、防过放、角度指示器等。置、起重臂防后翻装置、起升高度限位装置、风速仪、水平仪、液压系统的溢流阀、平衡阀、双向液压锁、回转警告、行走警告、防雷击保护装置、防过放、角度指示器等。

The safety protection devices comprise: load moment limiter, turntable lock pin, boom backstop, hoist limit switch, anemometer, level gauge, hydraulic system overflow valve, counterbalance valve, two-way hydraulic lock, slewing warning indicator and travel warning indicator, lightning protection device, over-released protection device, angle indicator, etc.

安装模式&工作模式切换 Switch between installation mode & working mode

安装模式下，防过卷装置、起重臂限位装置、力矩限制器等均不起作用，以利于起重机安装；工作模式下，所有安全装置均起作用。

When a breakdown occurs in the system, a toggle switch on control panel may be used to control the whole machine into safe state, at this time all safe protections have no use.

紧急停止功能 / Emergency function

具有紧急停止功能，可在紧急情况下，快停止所有动作。

All the movements can be stopped under emergency situation.

防误操作功能 / Mis-operation protection

手柄具备防误操作功能，在手柄前侧设置有安全保护开关，此开关没有按下的时候，所有动作信号被屏蔽，手柄不起作用，防止误操作。

The lever has mis-operation function, there is safety protection switch at the front side of the lever. When this switch is not pressed down, all movements signals are shielded to prevent from mis-operation.

防过卷功能 / Overall-reeved protection

臂头设置过卷装置，防止钢丝绳过卷。当起升到一定高度时候，显示器上的过卷指示灯亮，同时自动停止起升动作。

There is an over-reeved protection device to prevent wire rope from over-reeving. When it reaches to a certain height, the indicator on the screen is light, meanwhile automatically stop hoisting movement.

防过放功能 / Over-released function

起升机构均设置三圈保护器，避免卷筒放绳时产生过放。当卷扬钢丝绳只剩三圈时，显示器上的过放指示灯亮，同时自动停止下落动作。

There is a rope end limiter on the hoisting mechanism to avoid over-releasing of rope. When there are only 3 loops left on the drum, the indicating light is on, meanwhile, the lowering movement automatically stops.

棘爪锁止功能 / Ratchet locking device

具有棘爪锁止装置，用于锁定变幅卷扬，保证臂架在非工作时安全停放。

It is to lock luffing winch to guarantee the safe stock when boom is not working.

回转锁止功能 / Slewing locking function

具有回转锁止装置，用于起重机停止时，上车的回转锁定。

There is a slewing locking device for the slewing lock of superstructure.

防后倾功能 / Backstop protection

具有主臂、超起防后倾装置，防止臂架及支架的后仰。

There are main boom backstop and SL backstop devices to prevent boom and its strut from falling backwards.

起重臂角度限制 / Boom angle limit

具有主臂、超起防后倾装置，防止臂架及支架的后仰。

There are main boom backstop and SL backstop devices to prevent boom and its strut from falling backwards.

吊钩防脱功能 / hook latch protection

所有起重钩均装有防脱卡板，防止悬挂在起重钩头的吊索脱落。

All the hook blocks are protected with latches to prevent the rope from falling off.

液压系统安全保护功能 Hydraulic system protection

配置液压平衡阀、液压溢流阀等装置，保证系统工作时稳定安全。

There are hydraulic system balance valve and overflow valve to guarantee working safety and stability.

力矩限制器系统 / load moment limiter

力矩限制器能自动检测出起重臂的角度、起重载荷。具有预先报警、超载自动停止作业功能。

The load moment limiter automatically detects boom angle, lifting load; it sends out warning previously, and stop crane working once there is an overload.

声光报警功能 / Audio/Video warning

具有三色报警灯和声光报警器，可显示车辆负荷及动作状态，警示司机及车外人员。

There are triple color warning lamp and audio/video warning, the load and movement state can be indicated to give warning to the driver and personnel outside.

照明灯 / Illumination lamp

照明灯装在转台前方、操纵室上方和操纵室内，提供照明。

There are illumination lamps at front of turntable, and inside operator's cabin and above the cabin for night operation.

后视镜 / Rearview mirror

位于司机室外侧，便于司机观察机器后方情况。

It is outside the cabin for the driver to observe the rear side of the crane.

示高灯 / Height indicating lamp

示高灯安装在臂架顶部，作为高空警示。

it is on the boom top for aerial warning.

风速仪 / Anemometer

实时检测当前风速，并传送到操纵室的监视器上，提醒操作者注意风载荷。

Anemometer detects current wind speed and send wind signal to a monitor in operator's cabin to alert operator for safety.

水平仪 / level gauge

配有电子和机械水平仪，可显示使用路面的倾斜程度，为操作者提供机器水平度参考。

There is an electronic and mechanical level gauge to indicate the slope condition for the reference of the driver.

配套件明细表
Main Parts List

序号 No.	部件名称 Parts name	厂家 Manufacturer	
1	发动机 Engine	意大利菲亚特或潍柴或其它同等知名品牌 Italian Fiat or Weichai or other equally well-known brands	
2	主卷扬 Hoist winch	减速机 Winch reducer	O&K或其它同等知名品牌 O&K or other equivalent well-known brand
		马达 Hydraulic motor	利勃海尔或其它同等知名品牌 Liebherr or other equivalent well-known brand
	副卷扬 Auxiliary Winch	减速机 Winch reducer	O&K或其它同等知名品牌 O&K or other equivalent well-known brand
		马达 Hydraulic motor	利勃海尔或其它同等知名品牌 Liebherr or other equivalent well-known brand
	主变幅卷扬 Main luffing winch	减速机 Winch reducer	O&K或其它同等知名品牌 O&K or other equivalent well-known brand
		马达 Hydraulic motor	利勃海尔或其它同等知名品牌 Liebherr or other equivalent well-known brand
	超起变幅卷扬 Superlift, tower jib luffing winch	减速机 Winch reducer	O&K或其它同等知名品牌 O&K or other equivalent well-known brand
		马达 Hydraulic motor	利勃海尔或其它同等知名品牌 Liebherr or other equivalent well-known brand
	回转 Swing system	马达 Winch reducer	利勃海尔或其它同等知名品牌 Liebherr or other equivalent well-known brand
		减速机 Hydraulic motor	海力达或其它同等知名品牌 HAILIDA or other equivalent well-known brand
	行走 Travel unit	马达 Winch reducer	力士乐或其它同等知名品牌 Rexroth or other equivalent well-known brand
		减速机 Hydraulic motor	O&K或其它同等知名品牌 O&K or other equivalent well-known brand
		主泵 Oil pump	利勃海尔或其它同等知名品牌 Liebherr or other equivalent well-known brand
	主阀 Main valve	桑特或其它同等知名品牌 Hydracontrol or other equivalent well-known brand	
3	电控系统 Control system	力矩限制器 Load moment limiter	威卡或其它同等知名品牌 Weika or other equivalent well-known brand
4	回转支承 Slewing ring		徐州罗特艾德或其它同等知名品牌 Rothe Erde or other equivalent well-known brand
5	吊钩 Hook Block		山东宏瑞达/徐州大长实或其它同等知名品牌 Hongda/dachangshi or other equivalent well-known brand

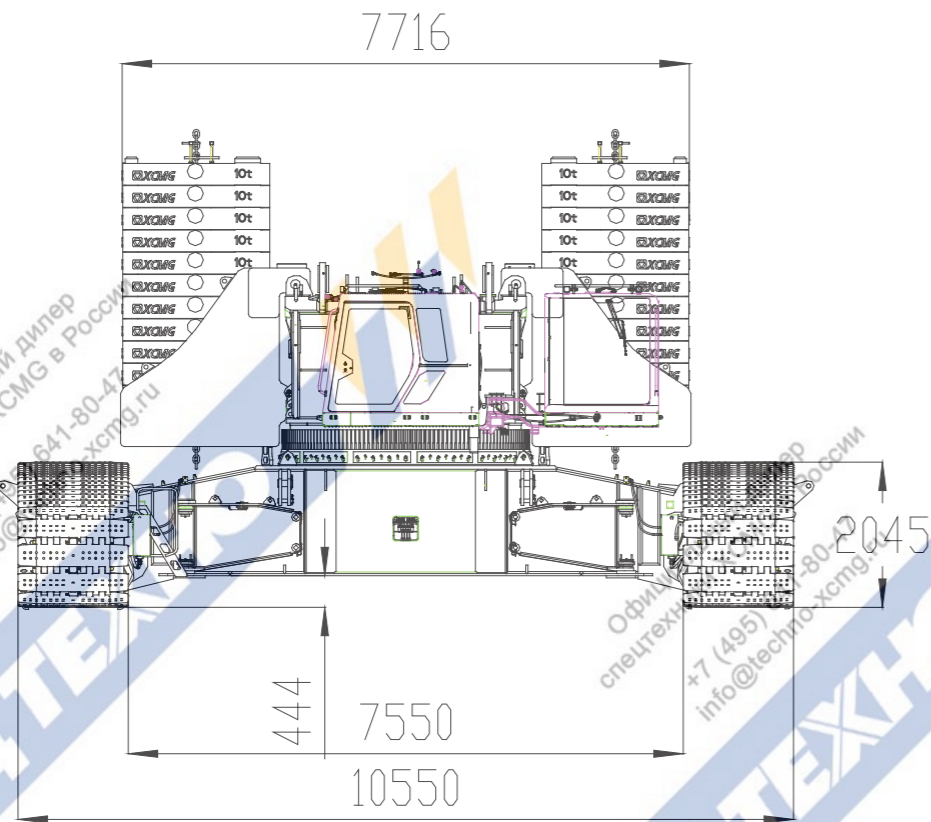
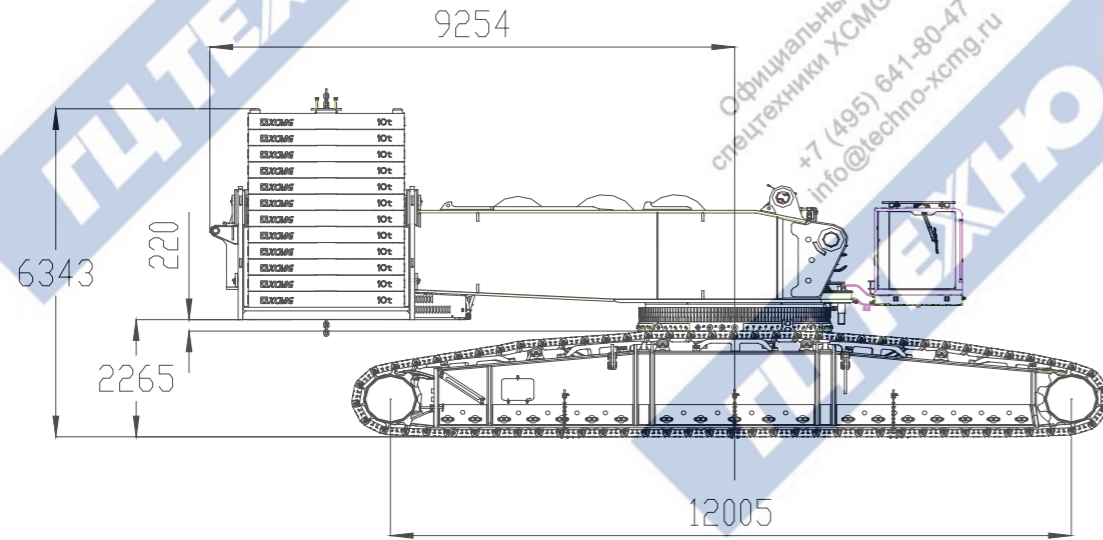


XGC型800t-12000tm履带起重机
XGC型800t-12000tm CRAWLER CRANE

- P18-P18 • 标准工况重型主臂臂节组合/重型主臂
Working condition setting
- P19-P19 • 标准工况重型主臂起重性能表
Standard Mode Heavy Boom Lifting Load Chart
- P20-P20 • 标准工况轻型主臂臂节组合/轻型主臂
Standard Mode Light Boom Combinations/Light Boom
- P21-P21 • 标准工况轻型主臂起重性能表
Standard Mode Light Boom Lifting Load Chart
- P22-P22 • 标准工况风电副臂臂节组合/风电副臂
Standard Mode Boom Point For Wind Power Combinations
- P23-P23 • 标准工况风电副臂性能表
Standard Wind Power Jib Lifting Load Chart
- P25-P26 • 标准工况塔式副臂性能表
Standard Mode Tower Jib Lifting Load Chart

主要技术参数
Main Technical Specifications

XGC12000型履带起重机外形尺寸
XGC12000 Crawler Crane Outline Dimensions



XGC12000 Crawler Crane Outline Dimensions in Standard Working Condition

主要技术参数
Main Technical Specifications

标准工况 Standard working condition	主臂工况 Heavy boom	重型主臂最大起重量(t) Max. rated lifting capacity(t)	800/6	
		重型主臂最大起重力矩(t·m) Max. load moment(t·m)	4880	
		重型主臂长度(m) Heavy boom length(m)	24~99	
		轻型主臂最大起重量(t) Max. lifting capacity of light duty boom(t)	342/11	
		轻型主臂最大起重力矩(t·m) Light boom load moment(t·m)	3796	
		轻型主臂长度(m) Light boom length(m)	84~114	
	风电副臂工况 Wind power auxiliary boom	最大起重量(t) Max. rated lifting capacity(t)	200/17	
		最大起重力矩(t·m) Max. load moment(t·m)	3420	
		最长臂架组合(m) Max. boom length combination (m)	120+12	
		变幅副臂工况 Tower jib	最大起重量(t) Max. rated lifting capacity(t)	269/16
			最大起重力矩(t·m) Max. lifting load moment(t·m)	4318
			最长臂架组合(m) boom length(m)	60+60
主臂角度(°) Boom luffing angle °	85°/75°/65°			
超起工况 Superlift working condition	主臂工况 Heavy boom	重型组主臂最大起重量(t) Heavy boom Max. rated lifting capacity(t)	800/15	
		重型主臂最大起重力矩(t·m) Heavy boom Max. load moment(t·m)	12512	
		重型主臂长度(m) Heavy boom length(m)	42~150	
		轻型主臂最大起重量(t) Light boom Max. lifting capacity(t)	390/26	
		轻型主臂最大起重力矩(t·m) Light boom Max. load moment(t·m)	11020	
		轻型主臂长度(m) Light boom length(m)	84~168	
	变幅副臂工况 Luffing jib Working condition	最大起重量(t) Max. lifting capacity(t)	390	
		最大起重力矩(t·m) Boom load moment(t·m)	7370	
		最长臂架组合(m) Max. boom length combination (m)	96+102	
		主臂角度(°) Boom angle °	85°/75°/65°	
		风电副臂工况 Wind power auxiliary boom	最大起重量(t) Max. lifting capacity(t)	230
			最大起重力矩(t·m) Max. lifting load moment(t·m)	10380
最长臂架组合(m) Max. boom length combination (m)	168+12			
专用副臂工况 Special auxiliary boom	最大起重量(t) Max. lifting capacity(t)		510	
	最大起重力矩(t·m) Max. lifting load moment (t·m)		11154	
	最长臂架组合(m) Max. boom length combination (m)		102+12	

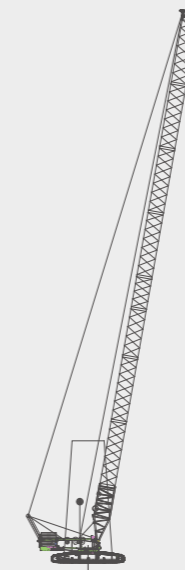
主要技术参数 Main Technical Specifications

项目 PROJECT	单位 unit	数值 value
起升最大单绳速度 Max. single line speed of hoist winch	m/min	121
主臂变幅最大单绳速度 Max. single line speed of boom luffing winch	m/min	2×55
超起变幅最大单绳速度 Max. single line speed of SL luffing	m/min	135
最大回转速度 Max. slewing speed	rpm	0.6
最高行驶速度 Max. travel speed	km/h	1.0
额定功率 Rated power	kw	515KW/570
排放标准 Emission	-	国 III/欧 III
整机重量(基于24m重型主臂, 800t吊钩) Total crane mass (24m heavy boom, 800t hook block)	t	655
平均接地比压 Mean ground pressure	MPa	0.19
爬坡度 Grade-ability	-	15%
车身平衡重 Car-body counterweight	t	95
转台平衡重 Turntable counterweight	t	265
超起平衡重 SL counterweight	t	425
最大单件运输重量-履带梁 Maximum single unit transport weight-Track beam	t	55
最大单件运输重量-主机分体 Max. single unit in transport weight-main body separation	t	48
最大单件运输尺寸(长×宽×高) Max. dimension of single unit (turntable) in transport state (L×W×H)	m	13.4×3.4×2.865

工况设置 Working condition setting

标准工况 Standard Mode

标准重型主臂
Standard Heavy Duty Boom
HB: 24-90m



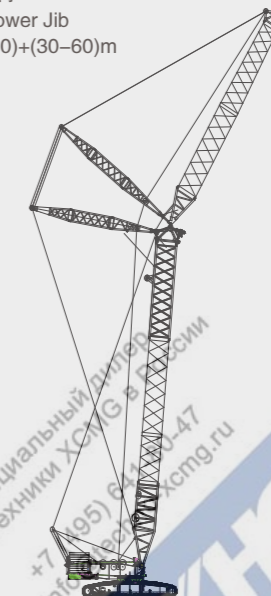
标准轻型主臂
Standard Light boom
LB: 84-114m



标准风电副臂
Standard Wind Power jib
LJ: (90-120)+12m



标准塔式副臂
Standard Tower Jib
HW: (42-60)+(30-60)m

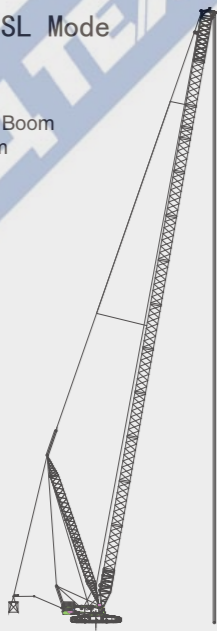


工况设置
Working Condition Setting

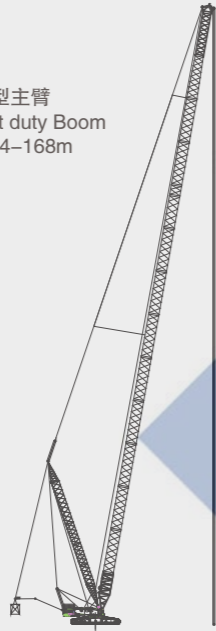
标准工况重型主臂臂节组合/重型主臂
Working condition setting

超起工况 SL Mode

超起重型主臂
SL Heavy Duty Boom
SHB: 42-150m



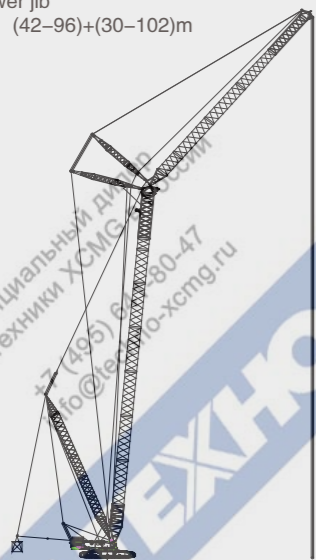
超起轻型主臂
SL Light duty Boom
SLB: 84-168m



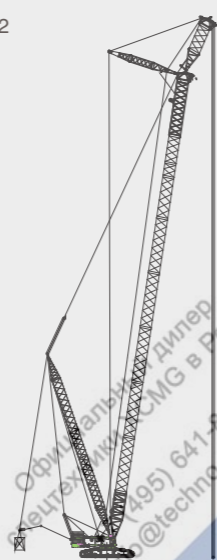
超起风电副臂
SL wind Power Jib
SHJ: (90-168) +12



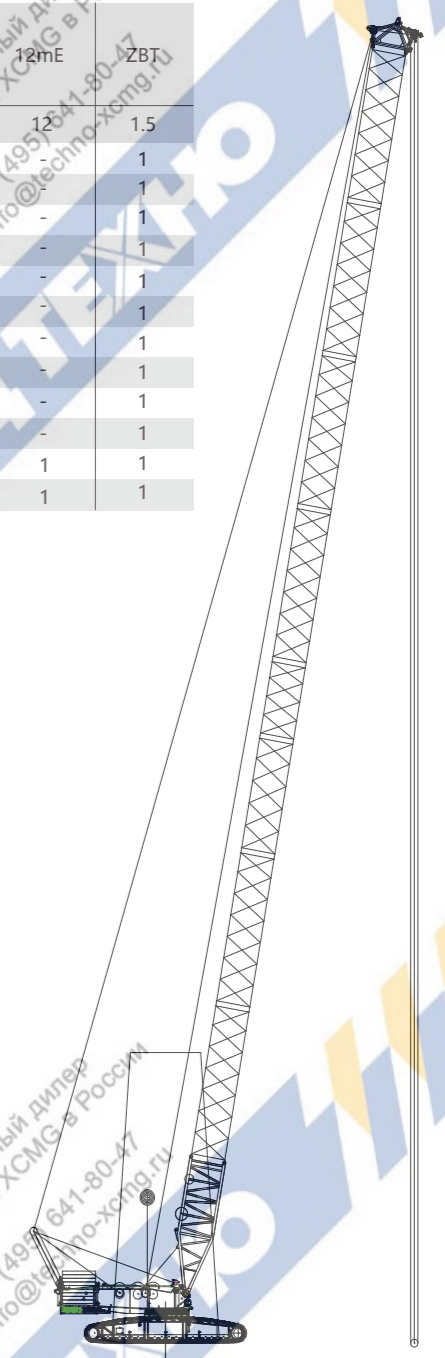
超起塔式副臂
SL tower jib
SHW: (42-96)+(30-102)m



超起专用副臂
SL tower jib
SHVJ: (90-102) +12



臂长 Boom length (m)	ZDJ	12mA	12mC	9m	3m	6mA	12mD	12mE	ZBT
10.5	1	12	12	9	3	6	12	12	1.5
24	1	-	-	-	-	2	1	-	1
30	1	-	-	-	-	1	1	-	1
36	1	-	-	-	-	2	1	-	1
42	1	-	-	-	-	1	2	-	1
48	1	-	-	-	-	2	2	-	1
54	1	-	-	-	-	1	3	-	1
60	1	-	-	-	-	2	3	-	1
66	1	1	1	1	1	1	1	-	1
72	1	1	1	1	1	-	2	-	1
78	1	1	1	1	1	1	2	-	1
84	1	1	1	1	1	-	2	1	1
90	1	1	1	1	1	1	2	1	1



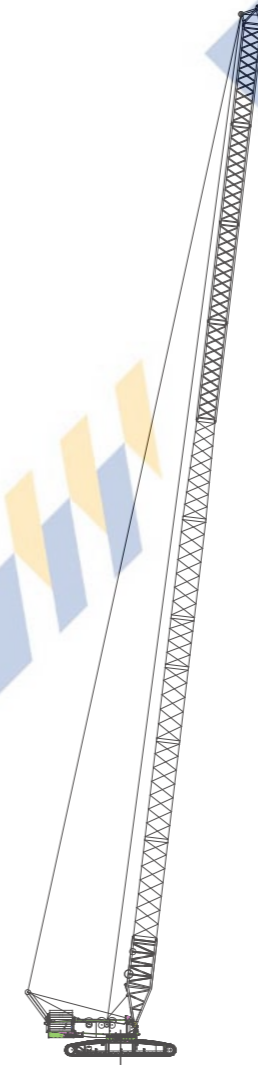
**标准工况重型
主臂起重性能表**
Standard Mode Heavy
Boom Lifting Load Chart

265t转台平衡重+95t车身平衡重
265t Turntable Balanced Counterweight+95t car-body balance counterweight

幅度Radius (m)	臂长 Boom length (m)					
	60	66	72	78	84	90
7						
8						
9	491					
10	438	417	399			
11	395	377	362	347	334	
12	359	343	330	317	306	295
13	328	315	303	292	282	272
14	302	290	280	270	261	253
15	280	269	260	250	243	235
16	260	250	242	233	227	219
17	243	233	226	218	212	206
18	227	218	212	205	199	193
19	213	205	199	192	187	182
20	199	193	187	181	177	171
22	176	172	167	162	158	153
24	156	153	150	145	142	138
26	138	136	135	132	129	125
28	124	121	121	119	117	113
30	111	109	108	107	106	103
32	101		98	96	96	95
34	91			87	87	86
36	83			79	78	78
38	76			71	71	70
40	70			65	65	64

标准工况轻型主臂臂节组合/轻型主臂
Standard Mode Light Boom Combinations/Light Boom

臂长 Boom length (m)	ZDJ	12mA	12mC	9m	3m	6mA	12mD	12mE	12mF	12mG	TBT	HL
10.5		12	12	9	3	6	12	12	12	12	1.5	-
84	1	1	1	1	1	-	1	1	1	1	1	1
90	1	1	1	1	1	1	-	1	1	1	1	1
96	1	1	1	1	1	-	-	2	1	1	1	1
102	1	1	1	1	1	1	-	2	1	1	1	1
108	1	1	1	1	1	-	1	2	1	1	1	1



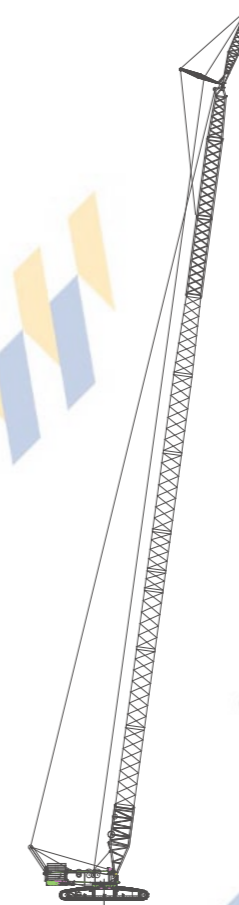
**标准工况轻型主臂
起重性能表**
Standard Mode Light
Boom Lifting Load Chart

265t转台平衡重+95t车身平衡重
265t Turntable Balanced Counterweight+95t car-body balance counterweight

幅度Radius (m)	臂长 Boom length (m)				
	84	90	96	102	108
11	342				
12	316	304	268		
13	292	281	260	232	207
14	271	261	253	225	201
15	252	244	236	219	196
16	236	228	221	213	190
17	221	214	208	201	185
18	208	202	196	190	180
19	196	190	185	179	173
20	186	180	175	169	164
22	167	161	157	152	148
24	151	146	142	138	134
26	137	133	130	125	121
28	124	121	118	114	111
30	113	111	109	105	101
32	103	101	100	96	93
34	94	93	91	89	86
36	86	84	84	82	79
38	79	77	77	75	73
40	72	71	70	69	67
42	67	65	64	63	62
44	61	60	59	58	56

**标准工况风电副臂臂节组合/风电副臂
Standard Mode Boom Point For Wind Power Combinations**

臂长 Boom length (m)	ZDJ	12mA	12mC	9m	3m	6mA	12mD	12mE	12mF	12mG	7.5m	FJ
10.5		12	12				12	12				
90	1	1	3	1	1	-	-	-	1	-	1	1
93	1	1	3	1	-	1	-	-	1	-	1	1
96	1	1	3	1	1	1	-	-	1	-	1	1
99	1	1	4	1	-	-	-	-	1	-	1	1
102	1	1	3	1	1	-	-	-	1	1	1	1
105	1	1	2	1	-	1	-	-	1	2	1	1
108	1	1	1	1	1	1	1	-	1	2	1	1
111	1	1	1	1	-	-	2	-	1	2	1	1
114	1	1	1	1	1	-	1	1	1	2	1	1



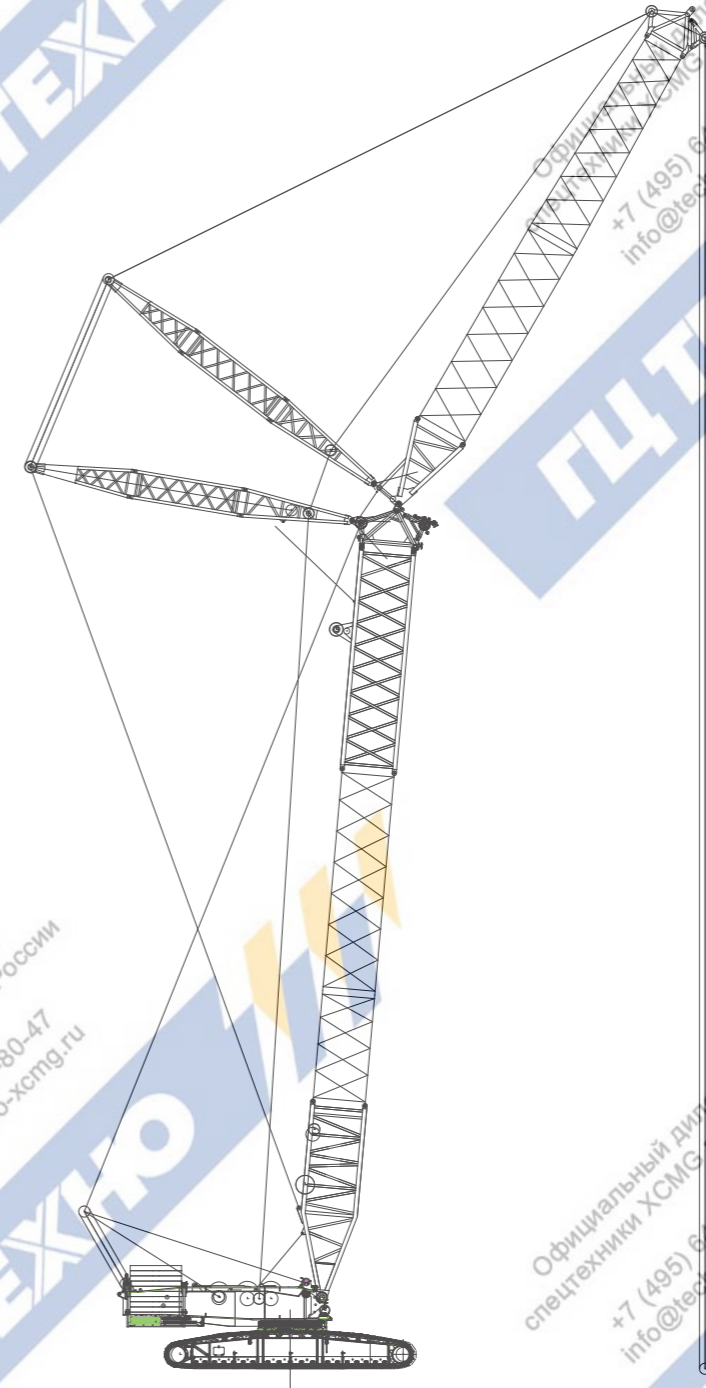
标准工况风电副臂性能表
Standard Wind Power Jib Lifting Load Chart

265t转台平衡重+95t车身平衡重
265t Turntable Balanced Counterweight+95t car-body balance counterweight

标准风电副臂，主副臂夹角10°
Standard wind power jib, main boom angle 10°

幅度Radius (m)	96	102	108	114
15	217	175	132	119
16	207	173	130	117
17	194	170	129	115
18	183	168	127	114
19	173	166	125	110
20	164	160	122	107
22	148	144	119	105
24	134	131	116	102
26	123	119	109	98
28	112	109	100	91
30	103	100	93	84
32	95	92	86	78
34	88	85	80	72
36	81	79	74	67
38	75	73	69	63
40	69	68	64	58
42	64	63	60	54
44	59	58	55	50
46	54	53	51	46
48	50	49	47	
50	46	45		

HW-标准塔式副臂
HW-standard tower jib



**标准工况塔式
副臂性能表**
Standard Mode Tower
Jib Lifting Load Chart

265t转台平衡重+95t车身平衡重

265t Turntable Balanced Counterweight+95t car-body balance counterweight

幅度Radius (m)	主臂角度85°, 副臂长度42m Main boom angle 85°, Tower jib 42m			
	42	48	54	60
19	202			
20	192	185	179	
22	174	168	162	156
24	159	154	149	143
26	146	142	137	132
28	135	131	127	122
30	125	122	118	114
32	116	113	110	106
34	108	105	103	99
36	100	98	96	93
38	93	91	89	87
40	86	85	83	81
42	80	80	78	76
44	75	75	73	71
46	70	70	68	67

265t转台平衡重+95t车身平衡重

265t Turntable Balanced Counterweight+95t car-body balance counterweight

幅度Radius (m)	主臂角度85°, 副臂长度60m Main boom angle 85°, Tower jib 60m			
	42	48	54	60
24	146			
26	134	130	125	120
28	124	120	116	111
30	115	111	108	104
32	107	104	100	96
34	100	97	94	90
36	94	91	88	84
38	88	85	82	79
40	82	80	78	75
42	77	75	73	70
44	72	70	68	66
46	68	66	64	62
48	64	62	60	58
50	60	58	56	54
52	56	55	53	51
54	53	52	50	48
56	50	49	47	45
58	47	46	45	43
60	44	44	42	40
64			37	36

Официальный дилер
спецтехники XCMG в России
+7 (495) 641-80-47
info@techno-xcmg.ru



XGC型800t-12000tm履带起重机

XGC型800t-12000tm CRAWLER CRANE

- P28-P29 • 超起工况重型主臂臂节组合/重型主臂
SL Mode Heavy Boom Combinations/Heavy Boom
- P31-P32 • 超起工况重型主臂起重性能表
SL Mode Heavy Boom Lifting Load Chart
- P33-P34 • 超起工况轻型主臂臂节组合/轻型主臂
SL Mode Light Boom Combinations/Light Boom
- P36-P36 • 超起工况轻型主臂起重性能表
SL Mode Light Boom Lifting Load Chart
- P37-P38 • 超起工况风电副臂臂节组合/风电副臂
SL Mode Wind power jib Combinations/Wind power jib
- P40-P45 • 超起工况风电副臂起重性能表
SL Mode Wind power Jib Lifting Load Chart
- P46-P47 • 超起工况塔式副臂臂节组合/塔式副臂
SL Mode Tower jib Combinations/Tower jib
- P49-P51 • 超起工况塔式副臂起重性能表
SL Mode Tower Jib Lifting Load Chart
- P52-P52 • SHVJ-超起专用副臂臂节组合/超起专用副臂
SHVJ- SL special jib combinations/SL special jib
- P54-P54 • SHVJ-超起专用副臂起重性能表
SHVJ-SL special jib lifting capacity charts

Официальный дилер
спецтехники XCMG в России
+7 (495) 641-80-47
info@techno-xcmg.ru

Официальный дилер
спецтехники XCMG в России
+7 (495) 641-80-47
info@techno-xcmg.ru

Официальный дилер
спецтехники XCMG в России
+7 (495) 641-80-47
info@techno-xcmg.ru

Официальный дилер
спецтехники XCMG в России
+7 (495) 641-80-47
info@techno-xcmg.ru

超起工况重型主臂臂节组合/重型主臂-双臂

SL Mode Heavy Boom Combinations/Heavy Boom

臂长 Boom length (m)	ZDJ	3mA	12mG×2	3mB	12mC	9m	3m	6m	12mD	ZBT
90	1	1	4	1	-	1	1	-	1	1
93	1	1	4	1	-	1	1	1	1	1
96	1	1	4	1	-	1	1	1	1	1
99	1	1	5	1	-	1	-	-	1	1
102	1	1	5	1	-	1	1	-	1	1
105	1	1	5	1	-	1	-	1	1	1
108	1	1	5	1	-	1	1	1	1	1
111	1	1	5	1	1	1	-	-	1	1
114	1	1	5	1	1	1	1	-	1	1
117	1	1	5	1	1	1	-	1	1	1
120	1	1	5	1	1	1	1	1	1	1
123	1	1	5	1	2	1	-	-	1	1
126	1	1	5	1	2	1	1	-	1	1
129	1	1	5	1	2	1	-	1	1	1
132	1	1	5	1	2	1	1	1	1	1
135	1	1	5	1	2	1	-	2	1	1
138	1	1	5	1	2	1	1	2	1	1
141	1	1	5	1	2	1	-	1	2	1
144	1	1	5	1	2	1	1	1	2	1
147	1	1	5	1	2	1	-	2	2	1
150	1	1	5	1	2	1	1	2	2	1

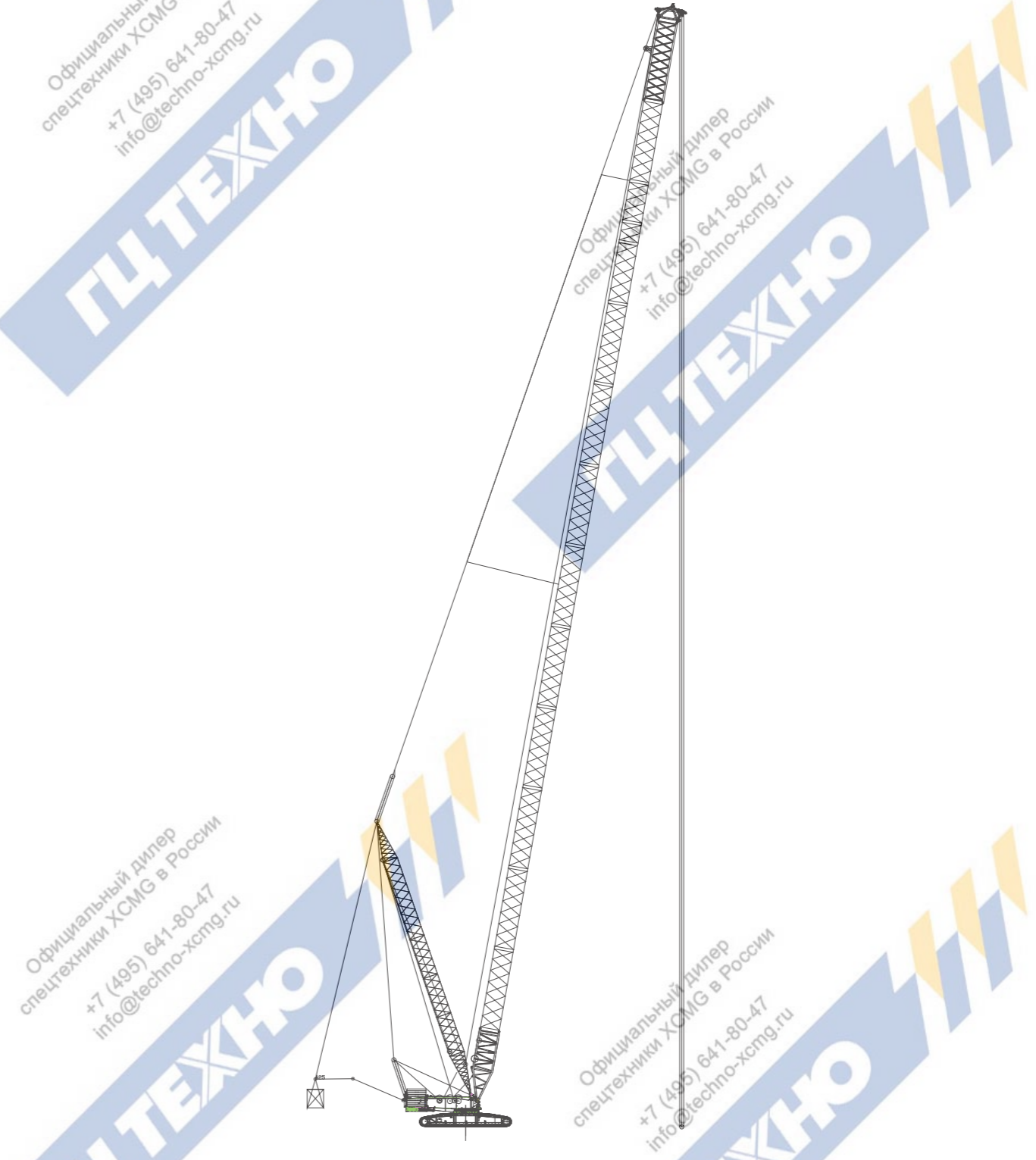
Официальный дилер
спецтехники XCMG в России
+7 (495) 641-80-47
info@techno-xcmg.ru

超起工况重型主臂臂节
组合/重型主臂-单臂
SL Mode Heavy Boom
Combinations
/Heavy Boom

Официальный дилер
спецтехники XCMG в России
+7 (495) 641-80-47
info@techno-xcmg.ru

臂长 Boom length (m)	ZDJ	12mA	12mB	12mC	9m	3m	6mA	12mD	ZBT	HL
10.5	1	-	-	-	-	-	1	2	1	2
42	1	-	-	-	-	-	1	2	1	2
45	1	-	-	-	-	1	1	2	1	2
48	1	-	-	-	-	-	-	3	1	2
51	1	-	-	-	-	1	-	3	1	2
54	1	-	-	-	-	-	1	3	1	2
57	1	1	1	-	1	-	-	1	1	2
60	1	1	1	-	1	1	-	1	1	2
63	1	1	1	-	1	-	1	1	1	2
66	1	1	1	-	1	1	1	1	1	2
69	1	1	2	-	1	-	-	1	1	2
72	1	1	2	-	1	1	-	1	1	2
75	1	1	2	-	1	-	1	1	1	2
78	1	1	2	-	1	1	1	1	1	2
81	1	1	2	1	1	-	-	1	1	2
84	1	1	2	1	1	1	-	1	1	2
87	1	1	2	1	1	-	1	1	1	2
90	1	1	2	1	1	1	1	1	1	2
93	1	1	2	2	1	-	-	1	1	2
96	1	1	2	2	1	1	-	1	1	2
99	1	1	2	2	1	-	1	1	1	2
102	1	1	2	2	1	1	1	1	1	2
105	1	1	2	3	1	-	-	1	1	2
108	1	1	2	3	1	1	-	1	1	2
111	1	1	2	3	1	-	1	1	1	2
114	1	1	2	3	1	1	1	1	1	2
117	1	1	2	4	1	-	-	1	1	2
120	1	1	2	4	1	1	-	1	1	2
123	1	1	2	4	1	-	1	1	1	2
126	1	1	2	4	1	1	1	1	1	2
129	1	1	2	5	1	-	-	1	1	2
132	1	1	2	5	1	1	-	1	1	2
135	1	1	2	5	1	-	1	1	1	2
138	1	1	2	5	1	1	1	1	1	2
141	1	1	2	5	1	-	-	2	1	2
144	1	1	2	5	1	1	-	2	1	2
147	1	1	2	5	1	-	-	2	1	2
150	1	1	2	5	1	1	1	2	1	2

Официальный дилер
спецтехники XCMG в России
+7 (495) 641-80-47
info@techno-xcmg.ru



Официальный дилер
спецтехники XCMG в России
+7 (495) 641-80-47
info@techno-xcmg.ru

Официальный дилер
спецтехники XCMG в России
+7 (495) 641-80-47
info@techno-xcmg.ru

**超起工况重型主臂
起重性能表**
SL Mode Heavy Boom
Lifting Load Chart

265t转台平衡重+95t车身平衡重+425t超起平衡重, 超起平衡重半径16m, 超起桅杆半径13m
265t Turntable Counterweight+95t car-body counterweight+425t, super-lift counterweight, super-lift counterweight radius 16m, the radius of the SL mast is 13m

幅度Radius (m)	臂长 Boom length (m)							
	42	48	54	60	66	72	78	84
8	800*							
9	800*	800*	739*					
10	800*	800*	739*	800*	738*			
11	800*	800*	739*	800*	738*	727*		
12	800	800	739*	800	738*	727*	643*	596*
13	777	776	739	771	738	727	643*	596*
14	721	720	718	715	713	710	643	596*
15	672	671	669	666	664	662	643	596
16	629	628	627	623	621	619	617	596
17	591	590	589	585	583	581	579	577
18	558	557	555	551	550	547	545	543
19	527	526	525	521	519	517	515	513
20	498	499	497	494	492	489	487	485
22	448	452	450	446	445	442	440	438
24	405	412	410	407	405	402	400	398
26	369	378	377	373	371	369	367	365
28	338	349	348	344	343	340	338	336
30	310	324	323	319	317	315	313	311
32	286	300	301	297	295	293	291	289
34	264	278	281	278	276	273	271	269
36	244	258	264	260	259	256	254	252
38	225	240	248	245	243	240	239	237
40	208	223	233	231	229	226	225	223

265t转台平衡重+95t车身平衡重+425t超起平衡重, 超起平衡重半径16m, 超起桅杆半径13m
265t Turntable Counterweight+95t car-body counterweight+425t, super-lift counterweight, super-lift counterweight radius 16m, the radius of the SL mast is 13m

幅度Radius (m)	臂长 Boom length (m)						
	90	96	102	108	114	120	126
8							
9							
10							
11							
12							
13	532*	482*					
14	532*	482*	424*	382*			
15	532*	482*	424*	382*	339*		
16	532	482*	424*	382*	340*	307*	274*
17	532	482*	424*	382*	341*	307*	274*
18	532	482	424*	382*	342*	307*	274*
19	511	482	424	382*	343*	307*	274*
20	483	466	424	382*	344*	307*	274*
22	436	427	407	382	345*	307*	274*
24	397	394	376	359	342	307	274*
26	363	361	350	333	318	303	274
28	334	332	328	312	298	283	271
30	309	307	305	293	280	265	254
32	287	285	283	277	264	250	239
34	268	266	264	262	250	236	226
36	250	248	247	244	237	224	215
38	235	233	231	229	226	213	204
40	221	219	217	215	213	203	194

超起工况轻型主臂臂节
组合/轻型主臂-双臂
SL Mode Light Boom
Combinations/Light Boom

Официальный дилер
спецтехники XCMG в России
+7 (495) 641-80-47
info@techno-xcmg.ru

臂长 Boom length (m)	ZDJ	3mA	12mGx2	3mB	12mC	9m	3m	6mA	12mD	12mF	12mG	TBT
96	1	1	3	1	-	1	1	1	1	1	1	1
99	1	1	3	1	1	1	-	-	-	1	1	1
102	1	1	3	1	1	1	1	-	-	1	1	1
105	1	1	3	1	1	1	-	1	-	1	1	1
108	1	1	3	1	1	1	1	1	-	1	1	1
111	1	1	4	1	1	1	-	-	-	1	1	1
114	1	1	4	1	1	1	1	-	-	1	1	1
117	1	1	4	1	1	1	-	1	-	1	1	1
120	1	1	4	1	1	1	1	1	-	1	1	1
123	1	1	4	1	1	1	-	-	1	1	1	1
126	1	1	5	1	1	1	1	-	-	1	1	1
129	1	1	5	1	1	1	-	1	-	1	1	1
132	1	1	5	1	1	1	1	1	-	1	1	1
135	1	1	5	1	2	1	-	-	-	1	1	1
138	1	1	5	1	2	1	1	-	-	1	1	1
141	1	1	5	1	2	1	-	1	-	1	1	1
144	1	1	5	1	2	1	1	1	-	1	1	1
147	1	1	5	1	2	1	-	-	1	1	1	1
150	1	1	5	1	2	1	1	-	1	1	1	1
153	1	1	5	1	2	1	-	1	1	1	1	1
156	1	1	5	1	2	1	1	1	1	1	1	1
159	1	1	5	1	2	1	-	-	2	1	1	1
162	1	1	5	1	2	1	1	-	2	1	1	1
165	1	1	5	1	2	1	-	1	2	1	1	1
168	1	1	5	1	2	1	1	1	2	1	1	1

Официальный дилер
спецтехники XCMG в России
+7 (495) 641-80-47
info@techno-xcmg.ru

Официальный дилер
спецтехники XCMG в России
+7 (495) 641-80-47
info@techno-xcmg.ru

超起工况轻型主臂臂节组合/轻型主臂-单臂
SL Mode Light Boom Combinations/Light Boom

Официальный дилер
спецтехники XCMG в России
+7 (495) 641-80-47
info@techno-xcmg.ru

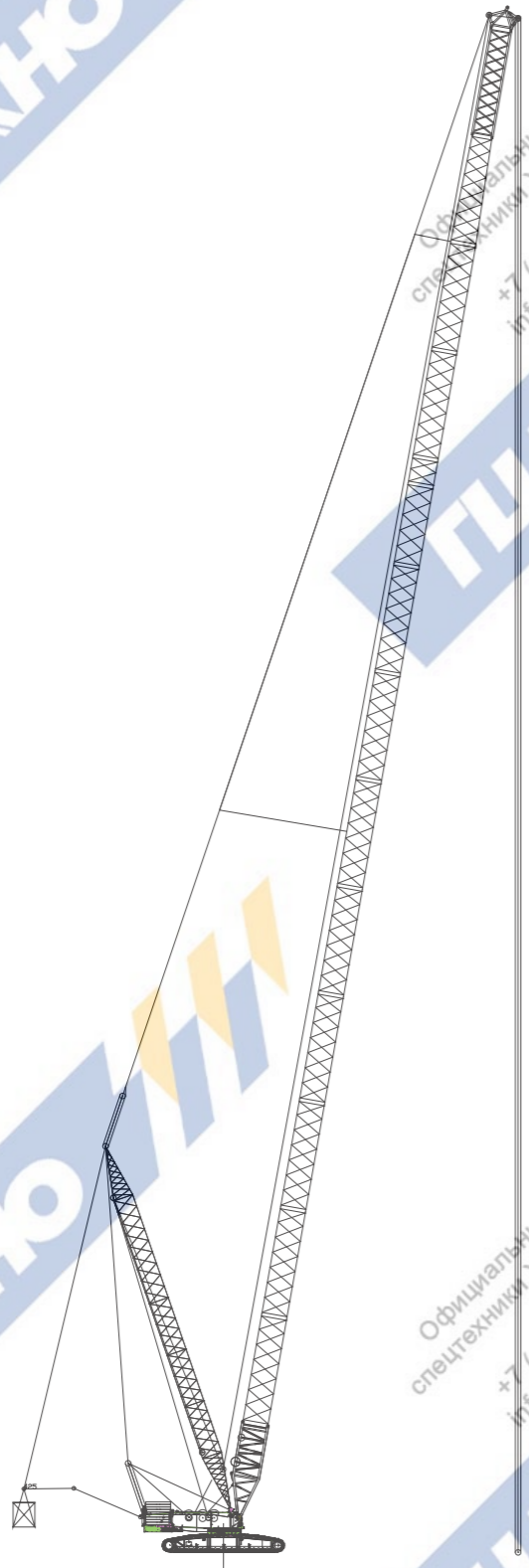
臂长 Boom length (m)	ZDJ	12mA	12mB	12mC	9m	3m	6mA	12mD	12mF	12mG	TBT	HL
81	1	1	2	1	1	-	-	-	1	-	1	1
84	1	1	2	1	1	1	-	-	1	-	1	1
87	1	1	2	1	1	-	1	-	1	-	1	1
90	1	1	2	1	1	1	1	-	1	-	1	1
93	1	1	2	2	1	-	-	-	1	-	1	1
96	1	1	2	2	1	1	-	-	1	-	1	1
99	1	1	2	2	1	-	1	-	1	-	1	1
102	1	1	2	2	1	1	1	-	1	-	1	1
105	1	1	2	3	1	-	-	-	1	-	1	1
108	1	1	2	3	1	1	-	-	1	-	1	1
111	1	1	2	3	1	-	1	-	1	-	1	1
114	1	1	2	3	1	1	1	-	1	-	1	1
117	1	1	2	4	1	-	-	-	1	-	1	1
120	1	1	2	4	1	1	-	-	1	-	1	1
123	1	1	2	4	1	-	1	-	1	-	1	1
126	1	1	2	4	1	1	1	-	1	-	1	1
129	1	1	2	5	1	-	-	-	1	-	1	1
132	1	1	2	5	1	1	-	-	1	-	1	1
135	1	1	2	5	1	-	1	-	1	-	1	1
138	1	1	2	5	1	1	1	-	1	-	1	1
141	1	1	2	5	1	-	-	1	1	-	1	1
144	1	1	2	5	1	1	-	1	1	-	1	1
147	1	1	2	5	1	-	1	1	1	-	1	1
150	1	1	2	5	1	1	1	1	1	-	1	1
153	1	1	2	5	1	-	-	2	1	-	1	1
156	1	1	2	5	1	1	-	2	1	-	1	1
159	1	1	2	5	1	-	1	2	1	-	1	1
162	1	1	2	5	1	1	1	2	1	-	1	1
165	1	1	2	5	1	-	-	2	1	1	1	1
168	1	1	2	5	1	1	-	2	1	1	1	1

Официальный дилер
спецтехники XCMG в России
+7 (495) 641-80-47
info@techno-xcmg.ru

Официальный дилер
спецтехники XCMG в России
+7 (495) 641-80-47
info@techno-xcmg.ru

SLB-超起轻型主臂
SLB - SL Light duty boom

Официальный дилер спецтехники XCMG в России
+7 (495) 641-80-47
info@techno-xcmg.ru



Официальный дилер спецтехники XCMG в России
+7 (495) 641-80-47
info@techno-xcmg.ru

Официальный дилер спецтехники XCMG в России
+7 (495) 641-80-47
info@techno-xcmg.ru

超起工况轻型主臂起重性能表
SL Mode Light Boom Lifting Load Chart

265t转台平衡重+95t车身平衡重+425t超起平衡重, 超起平衡重半径22m, 超起桅杆半径13m
265t Turntable Counterweight+95t car-body counterweight+425t, super-lift counterweight, super-lift counterweight radius 22m, the radius of the SL mast is 13m

幅度Radius (m)	臂长 Boom length (m)							
	126	132	138	144	150	156	162	168
16	272*	247*						
17	272*	247*	223*					
18	272*	247*	223*	201*	181*			
19	272*	247*	223*	201*	181*	163*	146*	
20	272*	247*	223*	201*	181*	163*	146*	132*
22	272*	247*	223*	201*	181*	163*	146*	132*
24	272*	247*	223*	201*	181*	163*	146*	132*
26	272*	247*	223*	201*	181*	163*	146*	132*
28	271*	247*	223*	201*	181*	163*	146*	132*
30	254*	244*	223*	201*	181*	163*	146*	132*
32	240*	230*	220*	201*	181*	163*	146*	132*
34	227*	217*	208*	198*	181*	163*	146*	132*
36	215*	206*	197*	188*	180*	163*	146*	132*
38	205*	196*	187*	178*	170*	163*	146*	132*
40	195*	187*	179*	170*	162*	157*	146*	132*
42	187*	180*	171*	162*	154*	149*	143*	132*
44	180*	173*	164*	155*	147*	143*	136*	132*
46	174*	167*	158*	149*	141*	136*	130*	127*
48	167*	161*	153*	144*	135*	131*	124*	121*
50	161*	155*	147*	139*	130*	125*	119*	116*

Официальный дилер спецтехники XCMG в России
+7 (495) 641-80-47
info@techno-xcmg.ru

Официальный дилер спецтехники XCMG в России
+7 (495) 641-80-47
info@techno-xcmg.ru

超起工况风电副臂臂节
组合/风电副臂-单臂
SL Mode Wind power jib
Combinations/Wind power jib

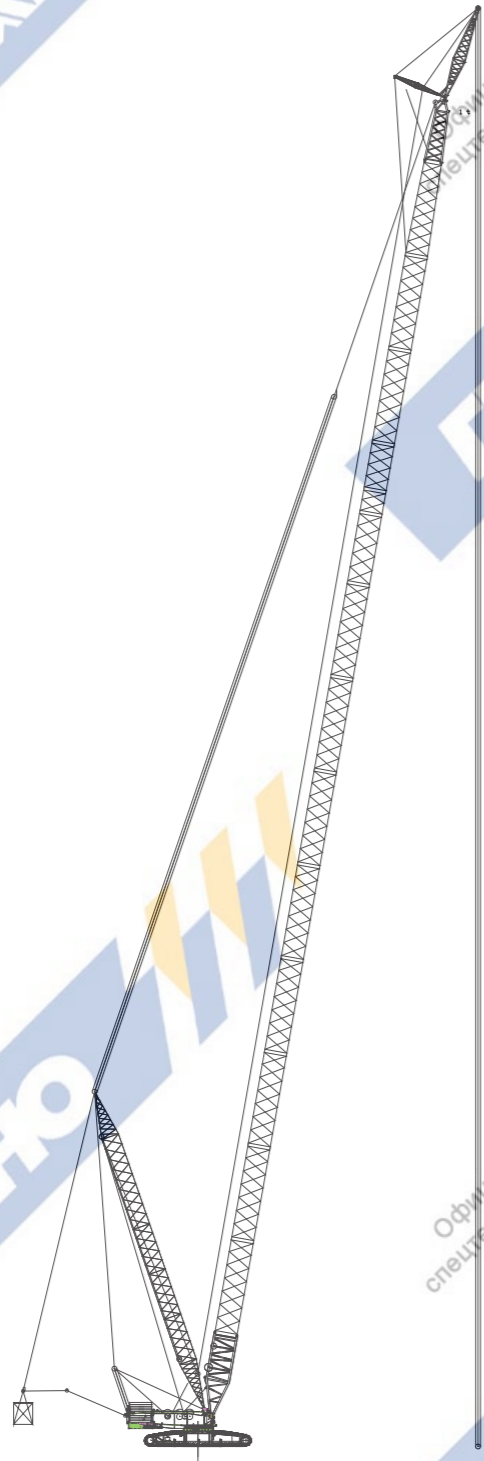
臂长 Boom length (m)	ZDJ	12mA	12mB	12mC	9m	3m	6mA	12mD	12mF	7.5m	FJ
87	1	1	2	1	1	-	-	1	1	1	1
90	1	1	2	1	1	1	-	1	1	1	1
93	1	1	2	1	1	-	1	-	1	1	1
96	1	1	2	1	1	1	1	-	1	1	1
99	1	1	2	2	1	-	-	-	1	1	1
102	1	1	2	2	1	1	-	-	1	1	1
105	1	1	2	2	1	-	1	-	1	1	1
108	1	1	2	2	1	1	1	-	1	1	1
111	1	1	2	3	1	-	-	-	1	1	1
114	1	1	2	3	1	1	-	-	1	1	1
117	1	1	2	3	1	-	1	-	1	1	1
120	1	1	2	3	1	1	1	-	1	1	1
123	1	1	2	4	1	-	-	-	1	1	1
126	1	1	2	4	1	1	-	-	1	1	1
129	1	1	2	4	1	-	1	-	1	1	1
132	1	1	2	4	1	1	1	-	1	1	1
135	1	1	2	5	1	-	-	-	1	1	1
138	1	1	2	5	1	1	-	-	1	1	1
141	1	1	2	5	1	-	1	-	1	1	1
144	1	1	2	5	1	1	1	-	1	1	1
147	1	1	2	5	1	-	-	1	1	1	1
150	1	1	2	5	1	1	-	1	1	1	1
153	1	1	2	5	1	-	1	1	1	1	1
156	1	1	2	5	1	1	1	1	1	1	1
159	1	1	2	5	1	-	-	2	1	1	1
162	1	1	2	5	1	1	-	2	1	1	1
165	1	1	2	5	1	-	1	2	1	1	1
168	1	1	2	5	1	1	1	2	1	1	1

超起工况风电副臂臂节组合/风电副臂-双臂
SL Mode Wind power jib Combinations/Wind power jib

臂长 Boom length (m)	ZDJ	3mA	12mG×2	3mB	12mC	9m	3m	6m	12mD	12mF	12mG	FBT	FJ
102	1	1	3	1	-	1	1	1	-	1	1	1	1
105	1	1	3	1	1	1	-	-	-	1	1	1	1
108	1	1	3	1	1	1	1	-	-	1	1	1	1
111	1	1	3	1	1	1	-	1	-	1	1	1	1
114	1	1	3	1	1	1	1	1	-	1	1	1	1
117	1	1	4	1	1	1	-	-	-	1	1	1	1
120	1	1	4	1	1	1	1	-	-	1	1	1	1
123	1	1	4	1	1	1	-	1	-	1	1	1	1
126	1	1	4	1	1	1	1	1	-	1	1	1	1
129	1	1	4	1	1	1	-	-	1	1	1	1	1
132	1	1	5	1	1	1	1	-	-	1	1	1	1
135	1	1	5	1	1	1	-	1	-	1	1	1	1
138	1	1	5	1	1	1	1	1	-	1	1	1	1
141	1	1	5	1	2	1	-	-	-	1	1	1	1
144	1	1	5	1	2	1	1	-	-	1	1	1	1
147	1	1	5	1	2	1	-	1	-	1	1	1	1
150	1	1	5	1	2	1	1	1	-	1	1	1	1
153	1	1	5	1	2	1	-	-	1	1	1	1	1
156	1	1	5	1	2	1	1	-	1	1	1	1	1
159	1	1	5	1	2	1	-	1	1	1	1	1	1
162	1	1	5	1	2	1	1	1	1	1	1	1	1
165	1	1	5	1	2	1	-	2	1	1	1	1	1
168	1	1	5	1	2	1	1	2	1	1	1	1	1

SHJ-超起风电副臂
SHJ-SL Wind power jib

Официальный дилер
спецтехники XCMG в России
+7 (495) 641-80-47
info@techno-xcmg.ru



Официальный дилер
спецтехники XCMG в России
+7 (495) 641-80-47
info@techno-xcmg.ru

Официальный дилер
спецтехники XCMG в России
+7 (495) 641-80-47
info@techno-xcmg.ru

超起工况风电副臂起重性能表
SL Mode Wind power Jib Lifting Load Chart

主副臂夹角10°，副臂长度12m，265t转台平衡重+95t车身平衡重+85t超起平衡重，超起平衡重半径22m，超起桅杆半径13m

SHJ-超起风电副臂-单臂				
幅度Radius (m)	臂长 Boom length (m)			
	96	102	108	126
14				
15	230	230		
16	230	230	230	
17	230	230	230	
18	230	230	230	207
19	230	230	230	207
20	230	230	230	206
22	230	230	228	204
24	230	229	223	203
26	216	211	205	189
28	200	195	190	175
30	185	181	176	162
32	172	168	164	150
34	158	157	153	140
36	147	145	143	131
38	137	135	132	122
40	127	125	123	115
42	119	117	115	108
44	112	109	107	100
46	105	103	101	94
48	98	96	94	87
50	93	91	89	82

Официальный дилер
спецтехники XCMG в России
+7 (495) 641-80-47
info@techno-xcmg.ru

Официальный дилер
спецтехники XCMG в России
+7 (495) 641-80-47
info@techno-xcmg.ru

**超起工况风电副臂
起重性能表**
SL Mode Wind power Jib
Lifting Load Chart

主副臂夹角10°，副臂长度12m，265t转台平衡重+95t车身平衡重+85t超起平衡重，超起平衡重半径22m，超起桅杆半径13m

幅度Radius (m)	SHJ-超起风电副臂-单臂					
	臂长 Boom length (m)					
	144	147	153	156	162	165
14						
15						
16						
17						
18						
19	159					
20	159	152	138			
22	159	152	138	132	119	114
24	159	152	138	132	119	114
26	159	152	138	132	119	114
28	159	152	138	132	119	114
30	148	146	138	132	119	114
32	137	135	131	129	119	114
34	128	126	122	119	117	113
36	119	117	113	111	109	107
38	111	109	105	103	101	100
40	103	102	98	96	94	93
42	97	95	92	90	88	86
44	91	89	86	84	82	80
46	85	83	80	78	76	75
48	79	78	75	73	71	70
50	74	73	70	68	66	65

安装角15°，车身平衡重95t，转台平衡重265t，超起平衡重425t，超起桅杆半径13m，超起平衡重半径16m
Offset angle 15°, Car-body counterweight 95t, Turntable counterweight 265t, SL counterweight 425t, SL mast radius 13m, SL counterweight radius 16m

幅度Radius (m)	SHJ-超起风电副臂-双臂 SHJ-SL Wind power jib -single boom					
	臂长 Boom length (m)					
	102	105	108	111	114	117
19	165*					
20	165*	165*	165*	165*		
21	165*	165*	165*	165*	165*	165*
22	165*	165*	165*	165*	165*	165*
23	165*	165*	165*	165*	165*	165*
24	165*	165*	165*	165*	165*	165*
26	160*	161*	164*	165*	165*	165*
28	154*	156*	158*	159*	161*	162*
30	148*	150*	152*	154*	155*	157*
32	143*	145*	147*	149*	150*	152*
34	139*	140*	142*	144*	146*	147*
36	134*	136*	138*	140*	141*	142*
38	130*	132*	134*	135*	137*	138*
40	126*	128*	130*	131*	133*	134*
44	119*	121*	123*	124*	126*	127*
48	113*	114*	116*	118*	119*	121*
52	107*	109*	111*	112	114	115
56	102	104	105	107	108	110
60	98	99	101	102	104	105
64	94	95	97	98	99	101
68	90	91	93	94	95	97
72	86	88	89	91	92	93
76	83	85	86	87	89	90
80	81	82	83	84	86	84
84	78	79	80	81	79	78
88	76	77	75	75	74	72
92	72	71	70	70	69	67
96	67	67	66	65	64	62
100	63	62	61	61	60	58

**超起工况风电副臂
起重性能表**
SL Mode Wind power Jib
Lifting Load Chart

安装角15°, 车身平衡重95t, 转台平衡重265t, 超起平衡重425t, 超起桅杆半径13m, 超起平衡重半径16m
Offset angle 15°, Car-body counterweight 95t, Turntable counterweight 265t, SL counterweight 425t, SL mast radius 13m, SL counterweight radius 16m

SHJ-超起风电副臂-双臂 SHJ-SL Wind power jib -single boom						
幅度Radius (m)	臂长 Boom length (m)					
	120	123	126	129	132	135
22	164*	163*	162*			
23	164*	163*	161*	160*	164*	163*
24	163*	162*	161*	160*	164*	163*
26	162*	161*	160*	159*	162*	161*
28	161*	161*	159*	158*	161*	160*
30	161*	160*	159*	158*	161*	160*
32	160*	159*	158*	157*	160*	159*
34	160*	159*	158*	157*	153*	152*
36	159*	159*	158*	157*	153*	152*
38	156*	158*	151*	151*	152	152
40	146	148	151	150	150	151
44	139	141	144	146	143	145
48	132	135	137	139	136	138
52	126	129	132	134	130	133
56	121	123	126	128	125	126
60	116	118	117	117	114	114
64	108	108	106	106	104	103
68	99	98	97	97	94	93
72	90	90	89	89	86	85
76	83	82	81	81	78	78
80	76	76	74	74	71	71
84	70	69	68	68	65	65
88	64	64	63	63	60	59
92	59	59	58	57	55	54
96	55	54	53	53	50	49
100	50	50	48	48	45	45

超起工况风电副臂起重性能表
SL Mode Wind power Jib Lifting Load Chart

安装角15°, 车身平衡重95t, 转台平衡重265t, 超起平衡重425t, 超起桅杆半径13m, 超起平衡重半径16m
Offset angle 15°, Car-body counterweight 95t, Turntable counterweight 265t, SL counterweight 425t, SL mast radius 13m, SL counterweight radius 16m

SHJ-超起风电副臂-双臂 SHJ-SL Wind power jib -single boom						
幅度Radius (m)	臂长 Boom length (m)					
	138	141	144	147	150	153
24	161*	161*	155*	153	154	152
26	160*	160*	154*	152*	153*	151*
28	159*	159*	153*	150*	153*	150*
30	158*	152*	152*	150*	152*	149*
32	152*	151*	151*	149*	151*	149*
34	151*	151*	151*	148*	151*	148*
36	151*	150*	150*	140*	150*	146*
38	150	147*	149*	140*	147*	137*
40	147	144	142	139	138	135
44	141	138	138	138	133	130
48	135	133	131	132	128	126
52	130	128	125	123	120	118
56	124	123	119	119	116	110
60	112	110	109	108	107	107
64	102	100	99	98	97	97
68	92	90	89	88	87	87
72	84	82	81	80	79	79
76	76	74	73	73	71	71
80	70	68	66	66	65	65
84	63	62	60	60	58	58
88	58	56	55	54	53	53
92	53	51	50	49	48	48
96	48	46	45	44	43	43
100	43	41	40	39	38	38

**超起工况风电副臂
起重性能表**
SL Mode Wind power Jib
Lifting Load Chart

安装角15°, 车身平衡重95t, 转台平衡重265t, 超起平衡重425t, 超起桅杆半径13m, 超起平衡重半径16m
Offset angle 15°, Car-body counterweight 95t, Turntable counterweight 265t, SL counterweight 425t,
SL mast radius 13m, SL counterweight radius 16m

SHJ-超起风电副臂-双臂 SHJ-SL Wind power jib -single boom					
幅度Radius (m)	臂长 Boom length (m)				
	156	159	162	165	168
26	148*	143*	140*	131*	122*
28	147*	142*	137*	130*	122*
30	146*	142*	137*	130*	122*
32	146*	141*	136*	122*	122*
34	145*	133*	128*	121*	122*
36	135*	131*	126*	120*	114*
38	133*	129*	124*	120*	113*
40	131*	122*	122*	118*	112*
44	127	122	118	114	111
48	122	119	114	110	108
52	116	114	111	107	105
56	108	106	103	102	98
60	105	103	101	99	91
64	95	95	94	92	89
68	86	85	84	84	83
72	78	77	76	76	74
76	70	69	68	68	67
80	63	63	61	61	60
84	57	57	55	55	54
88	52	51	50	49	48
92	46	46	44	44	43
96	41	39	39	39	38
100	44	33	35	35	33

超起工况塔式副臂臂节组合/塔式主臂
SL Mode Tower jib Combinations/Tower jib

臂长 Boom length (m)	ZDJ	12mA	12mB	12mC	9m	3m	6mA	12mD	ZBT
10.5	1	12	12	12	9	3	6	12	1.5
42	1	-	-	-	-	-	1	2	1
48	1	-	-	-	-	-	-	3	1
54	1	-	-	-	-	-	1	3	1
60	1	1	1	1	1	1	-	1	1
66	1	1	1	1	1	1	1	1	1
72	1	1	2	2	1	1	-	1	1
78	1	1	2	2	1	1	1	1	1
84	1	1	2	2	1	1	-	1	1
90	1	1	2	2	1	1	1	1	1
96	1	1	2	2	1	1	-	1	1
102	1	1	2	2	1	1	1	1	1

超起工况塔式副臂
臂节组合/塔式副臂
SL Mode Tower jib
Combinations/Tower jib

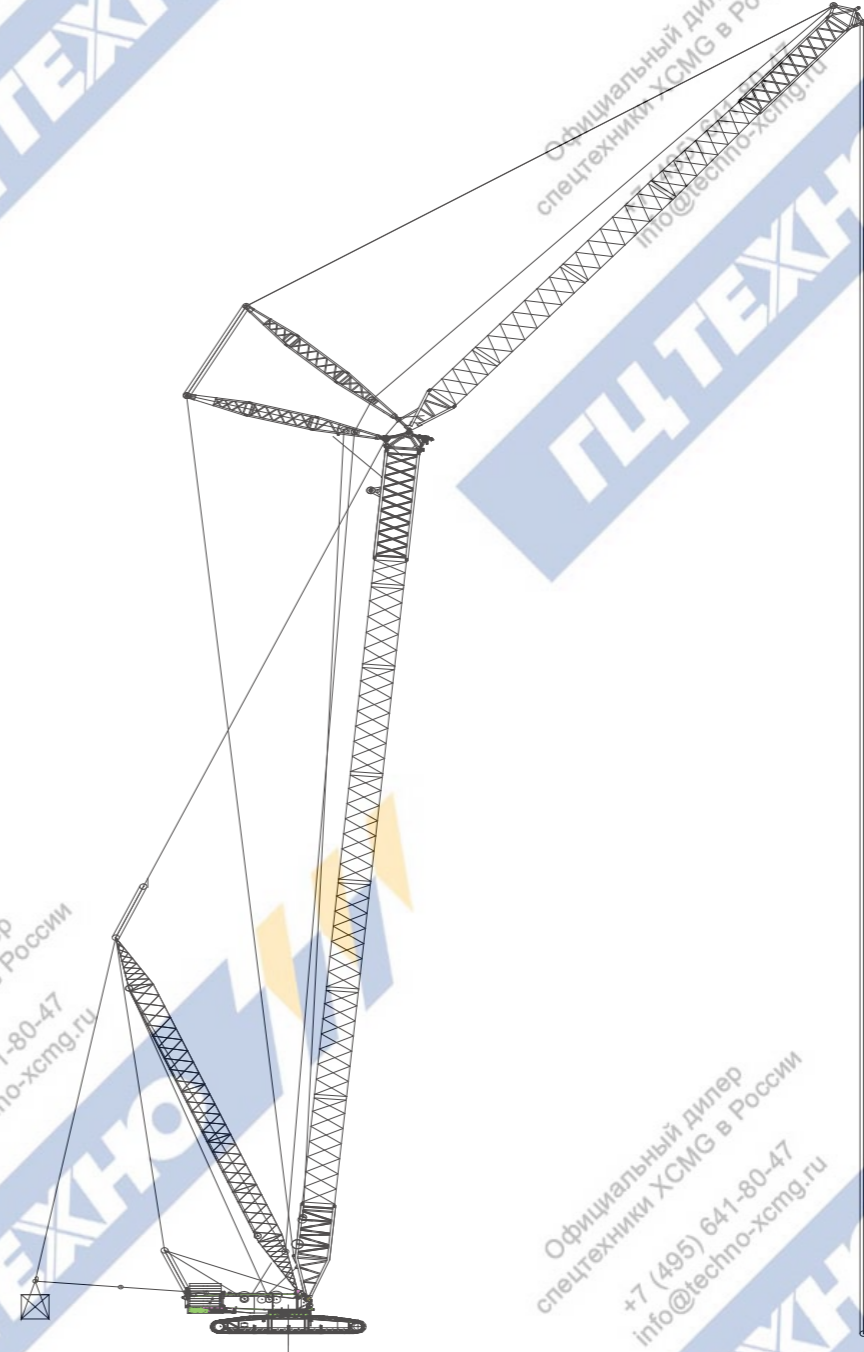
Официальный дилер
спецтехники XCMG в России
+7 (495) 641-80-47
info@techno-xcmg.ru

超起塔臂-副臂

臂长 Boom length (m)	TDJ	6mA	12E	12mF	6mB	12mG	TBT	HL
10.5	1	6	12	12	6	12	1.5	-
30	1	-	1	1	-	-	1	1
36	1	1	1	1	-	-	1	1
42	1	-	2	1	-	-	1	1
48	1	1	2	1	-	-	1	1
54	1	1	2	1	1	-	1	1
60	1	1	2	1	-	1	1	1
66	1	1	2	1	1	1	1	1
72	1	1	2	1	-	2	1	1
78	1	1	2	1	1	2	1	1
84	1	1	2	1	-	3	1	1
90	1	1	2	1	1	3	1	1
96	1	1	2	1	-	4	1	1
102	1	1	2	1	1	4	1	1

Официальный дилер
спецтехники XCMG в России
+7 (495) 641-80-47
info@techno-xcmg.ru

Официальный дилер
спецтехники XCMG в России
+7 (495) 641-80-47
info@techno-xcmg.ru



Официальный дилер
спецтехники XCMG в России
+7 (495) 641-80-47
info@techno-xcmg.ru

Официальный дилер
спецтехники XCMG в России
+7 (495) 641-80-47
info@techno-xcmg.ru

Официальный дилер
спецтехники XCMG в России
+7 (495) 641-80-47
info@techno-xcmg.ru

**超起工况塔式副臂
起重性能表**
SL Mode Tower Jib
Lifting Load Chart

主臂角度85°，副臂长度30m，265t转台平衡重+95t车身平衡重+425t超起平衡重，超起平衡重半径22m，超起桅杆半径15m
Main boom angle 85°，Fix jib length 30m，265t Turntable Counterweight+95t carbody counterweight+85t superlift counterweight, superlift counterweight radius 22m, the radius of the SL mast is 15m

幅度Radius (m)	臂长 Boom length (m)					
	60	66	72	78	84	90
16						
17						
18	400*	360*				
19	393*	349*	343*	306*		
20	379*	337*	331*	297*	285*	256*
22	349*	313*	307*	277*	266*	241*
24	320*	288*	282*	256*	247*	225*
26	292*	264*	258*	236*	227*	209*
28	260*	241*	235*	216*	209*	193*
30	231*	219*	214*	198*	191*	178*
32	204*	200*	195*	181*	175*	163*
34	180*	182*	177*	165*	160*	150*
36	156*	163*	162*	151*	147*	138*
38				135*		127*

超起工况塔式副臂起重性能表
SL Mode Tower Jib Lifting Load Chart

主臂角度85°，副臂长度60m，265t转台平衡重+95t车身平衡重+425t超起平衡重，超起平衡重半径22m，超起桅杆半径15m
Main boom angle 85°，Fix jib length 60m，265t Turntable Counterweight+95t carbody balance counterweight+85t superlift counterweight, superlift counterweight radius 22m, the radius of the SL mast is 15m

幅度Radius (m)	臂长 Boom length (m)					
	60	66	72	78	84	90
24						
26	202*	183*				
28	195*	176*	175*	158*	154*	139*
30	187*	169*	167*	152*	147*	134*
32	179*	161*	159*	144*	140*	128*
34	170*	153*	151*	137*	133*	122*
36	160*	145*	143*	130*	126*	115*
38	151*	137*	134*	122*	118*	109*
40	143*	129*	126*	115*	111*	103*
42	134*	121*	118*	108*	105*	97*
44	126*	114*	111*	102*	98*	91*
46	118*	107*	104*	95*	92*	85*
48	111*	100*	97*	89*	86*	80*
50	104*	94*	91*	84*	81*	75*
52	97*	88*	85*	78*	75*	70*
54	91*	83*	79*	73*	71*	66*
56	85*	77*	74*	69*	66*	62*
58	80*	73*	70*	64*	62*	58*
60	75*	68*	65*	60*	58*	54*
64	66*	60*	57*	53*	51*	48*

**超起工况塔式副臂
起重性能表**
SL Mode Tower Jib
Lifting Load Chart

主臂角度85°，副臂长度84m，265t转台平衡重+95t车身平衡重+425t超起平衡重，超起平衡重半径22m，超起桅杆半径15m
Main boom angle 85°，Fix jib length 84 m，265t Turntable Balanced Counterweight+95t carbody counterweight+85t superlift counterweight，superlift counterweight radius 22m，the radius of the SL mast is 15m

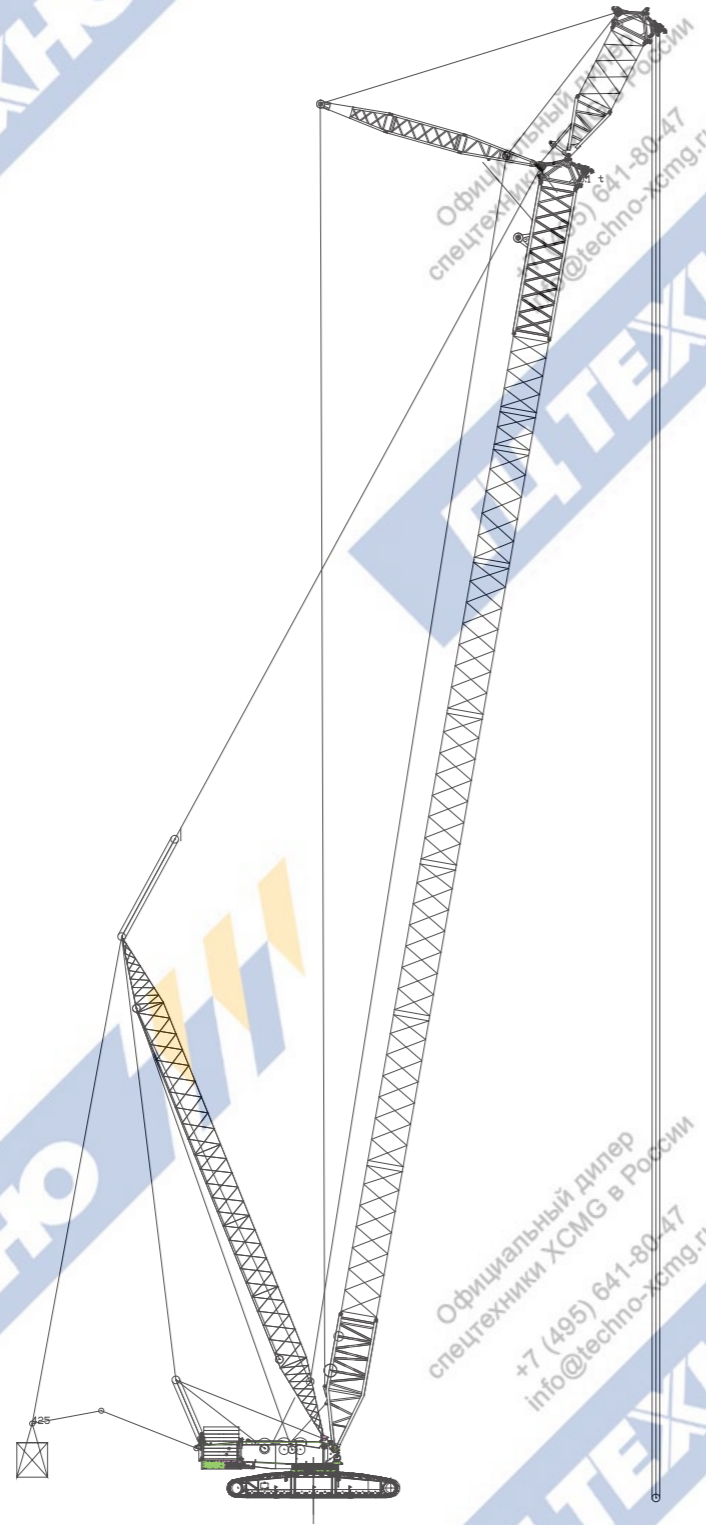
幅度Radius (m)	臂长 Boom length (m)					
	60	66	72	78	84	90
30						
32	116*	107*				
34	115*	107*	107*	99*	97*	89*
36	115*	106*	106*	97*	94*	86*
38	113*	103*	103*	94*	91*	83*
40	110*	100*	99*	91*	88*	81*
42	106*	97*	96*	87*	85*	78*
44	102*	93*	92*	84*	81*	74*
46	98*	89*	88*	80*	78*	71*
48	95*	86*	84*	77*	74*	68*
50	91*	82*	81*	73*	71*	65*
52	87*	79*	77*	70*	68*	62*
54	83*	75*	73*	67*	64*	59*
56	79*	72*	70*	63*	61*	56*
58	76*	68*	66*	60*	58*	53*
60	72*	65*	63*	57*	55*	51*
64	66*	59*	57*	52*	50*	46*
68	59*	53*	51*	47*	45*	41*
72	54*	48*	46*	42*	40*	37*
76	49*	44*	41*	38*	36*	33*
80	44*	40*	37*	34*	32*	30*
84	39*	36*	34*	31*	29*	27*
88				28*	26*	25*

SHVJ-超起专用副臂臂节组合/超起专用副臂-主臂
SHVJ- SL special jib combinations/SL special jib

臂长 Boom length (m)	ZDJ	12mA	12mB	12mC	9m	3m	6mA	12mD	ZBT
	10.5								
12									
12									
12									
9									
3									
6									
12									
1.5									
42	1	-	-	-	-	-	1	2	1
45	1	-	-	-	-	-	1	2	1
48	1	-	-	-	-	-	-	3	1
51	1	-	-	-	-	-	1	3	1
54	1	-	-	-	-	-	1	3	1
57	1	1	1	-	1	-	-	1	1
60	1	1	1	-	1	1	-	1	1
63	1	1	1	-	1	-	1	1	1
66	1	1	1	-	1	1	1	1	1
69	1	1	2	-	1	-	-	1	1
72	1	1	2	-	1	1	-	1	1
75	1	1	2	-	1	-	1	1	1
78	1	1	2	-	1	1	1	1	1
81	1	1	2	1	1	-	-	1	1
84	1	1	2	1	1	1	-	1	1
87	1	1	2	1	1	-	1	1	1
90	1	1	2	1	1	1	1	1	1
93	1	1	2	2	1	-	-	1	1
96	1	1	2	2	1	1	-	1	1
99	1	1	2	2	1	-	1	1	1
102	1	1	2	2	1	1	1	1	1
105	1	1	2	3	1	-	-	1	1
108	1	1	2	3	1	1	-	1	1

SHVJ-超起专用副臂
SHVJ-SL Special jib

Официальный дилер
спецтехники XCMG в России
+7 (495) 641-80-47
info@techno-xcmg.ru



Официальный дилер
спецтехники XCMG в России
+7 (495) 641-80-47
info@techno-xcmg.ru

Официальный дилер
спецтехники XCMG в России
+7 (495) 641-80-47
info@techno-xcmg.ru

SHVJ-超起专用副臂起重性能表
SHVJ-SL special jib lifting capacity charts

Официальный дилер
спецтехники XCMG в России
+7 (495) 641-80-47
info@techno-xcmg.ru

副臂长度12m, 265t转台平衡重+95t车身平衡重+425t超起平衡重超起平衡重半径22m, 超起桅杆半径15m
Jib length 12m, turntable counterweight 265t +95t car-body counterweight +425t SL counterweight SL counterweight radius 22m, SL mast radius 15m

幅度Radius (m)	臂长 Boom length (m)		
	90	96	102
18	338*		
19	340*	311*	
20	342*	313*	276*
22	346*	316*	279*
24	350*	320*	282*
26	350*	323*	284*
28	341*	325*	287*
30	317*	303*	287*
32	297	284*	271*
34	279	266*	255*
36	263	251	240*
38	248	237	226*
40	235	224	214
42	222	212	203
44	211	202	193
46	200	192	184
48	190	182	175
50	181	174	167

Официальный дилер
спецтехники XCMG в России
+7 (495) 641-80-47
info@techno-xcmg.ru

Официальный дилер
спецтехники XCMG в России
+7 (495) 641-80-47
info@techno-xcmg.ru