



All Rights Reserved

Materials and specifications are subject to change without notice. Featured machines in photos may include additional equipment. See your XCMG dealer for available options.

"XCMG", "WWW.XCMG.COM", "XCMG For Your Success", as well as the corporate and product identity used herein are trademarks and may not be used without permission.



LW800KN

WHEEL LOADER



www.xcmg.com

XCMG Regional Departments:

Europe (+86-516) 87739238 87739271 87739228

West Asia & North Africa (+86-516) 87739251 87739202 87739223

Asia-Pacific (+86-516) 87739500 87739529 87739233

Central Asia (+86-516) 87739218 87739239 87739510

North America (+86-516) 87739285 87739551 87739713

South America (+86-516) 87739196 87739714 87739187

Africa (+86-516) 87739501 87739222 87739709

XUZHOU CONSTRUCTION MACHINERY GROUP IMP. & EXP. CO., LTD

Add: No.1, Tuolanshan Road, Xuzhou Economic Developing Zone, Jiangsu, China 221004

Fax: (+86-516) 87739230

E-mail: export@xcmg.com

LW800KN

WHEEL LOADER

As the latest generation of internationally advanced products emphatically manufactured by Xuzhou Construction Machinery Group Co., Ltd. (XCMG) by virtue of its international research and development platform, the LW800KN wheel loader features a strong structure, sufficient power, satisfactory stability, outstanding reliability, all-round safety, considerate comfortableness and excellent energy-saving efficiency as the preferred production equipment for ports, logistics enterprises and large mines.

MODEL CHARACTERISTICS

- The brand-new integrated FOPS&ROPS ultra-quiet cab in accordance with the European and American mainstream style has integrated today's global most advanced technology in its super-large space, featuring higher security, wider view and more comfortable control.
- The scientifically matched and deeply optimized transmission system, as well as the international leading transmission and drive axle, can offer more satisfactory efficiency and more sufficient reliability.
- The heavy-load design of a long wheelbase, as well as 3D simulation and optimization of the structural members, can meet the needs for working in harsh conditions.
- By virtue of the load-sensitive variable technology, the pressure and flow rate can be provided as needed, thus to significantly improve the fuel efficiency.
- The independent cooling system and single-row large-spaced radiator have completely solved the problem of thermal equilibrium during working in various kinds of harsh environment.

Performance advantages

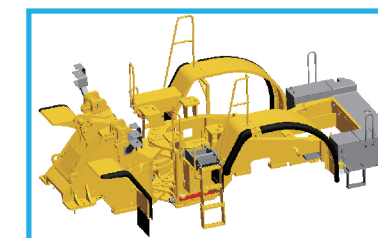
- More powerful and more efficient - Digging force $\geq 260\text{kN}$, lifting time $\leq 6.5\text{s}$.
- The 4.0 ~ 7.0 m³ shovel loaders can be available for your choice according to different materials and working conditions, able to reach as high as 3.9 meters and thus deal with all kinds of working conditions.
- The "Three-Guarantee" Period (Warranty Period) is far beyond the industrial level up to 2 years or 5000 hours (whichever earlier) for the front and rear frames, movable arms and rocker arms, which has highlighted the top quality of XCMG's loaders.

Heavy-load design, solid and reliable

Toughness is XCMG's style and heavy load is XCMG's peculiarity. Based on such international advanced design means as 3D simulation, XCMG has developed the whole structure most powerful in the industry; moreover, the product high attendance rate can be ensured by virtue of its in-depth research on the customers' requirements and the application of its international product research and development platform.

Solid framework

- ▶ By virtue of the finite element analysis and optimization, the front and rear frames boast more reasonable layout and more powerful overload resistance, able to withstand the torsion and impact under various working conditions.
- ▶ The upper and lower hinge joints of the front and rear frames adopt double-row conic roller bearings, able to effectively decompose the impacts from all directions, and thus able to achieve stronger carrying capacity, more satisfactory stability and more sufficient reliability.



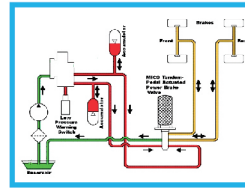
Efficient solid working mechanism

- ▶ The working mechanism adopts high-strength sheet materials and shovel loaders based on the optimization design, so that the whole machine could achieve super-strong stacking penetration, higher excavation capacity, more accurate control and shorter working duration.
- ▶ By virtue of the electromagnetic positioning technology, the shovel loader can lower flat automatically and the movable arm can work within the lifting limit, so that the operation steps could be simplified, thus to prevent mechanical shocks during lifting.



High-reliability and maintenance-free braking system

- ▶ It adopts a fully-enclosed wet-connected braking system, characterized by less wear and free maintenance.
- ▶ Two independent hydraulic circuits can work independently free of mutual influence, able to guarantee the safety of the braking system.



High-strength drive axle

- ▶ XCMG has completed special improvement on the internationally common structure of the large-tonnage drive axles, so that the axle housing could be more sufficiently lubricated and cooled, and thus the drive axle could enjoy a longer service life.

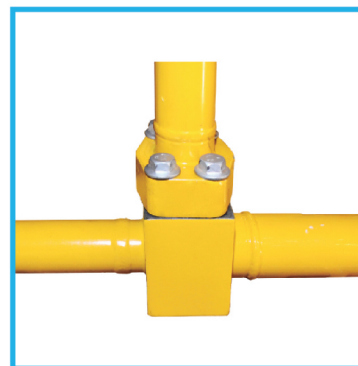
Special design of protection

- ▶ The whole machine comprehensively adopts the powder electrostatic coating technology, with the preservative treatment covering all electrical connectors and key hydraulic pipelines to have achieved an effective anti-corrosion capacity.
- ▶ The pin shaft two-stage dust prevention and engine intake three-stage filtration can satisfy the requirements for working in dusty and other harsh environmental conditions.



World-leading hydraulic and electrical components

- ▶ The world-famous energy-efficient mute hydraulic pump configured can provide more sufficient hydraulic power.
- ▶ All hydraulic steel pipelines are made from high-density steel pipes, able to achieve higher reliability.
- ▶ The world-famous pilot control system, the wiring harness adopts full-sealed connectors and all electrical components boast higher reliability by virtue of the dustproof and waterproof treatment.



High efficiency and energy saving

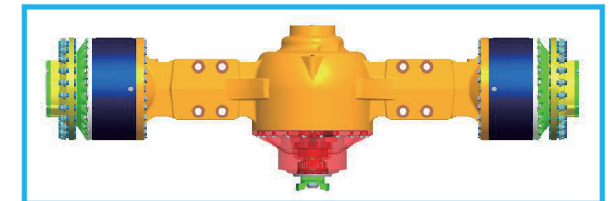
- ▶ The unique power system matching technology of XCMG can ensure the most excellent power performance; the shovel loader type optimization can significantly improve the filling coefficient; its excellent material hold facility plus the strong power output can satisfy the requirements for the maximum production within the shortest time.
- ▶ LW800KN has applied the most advanced energy-saving technology in the industry, including the lightweight design, smart independent cooling and full-variable hydraulic system, etc., and the composite energy-saving effect is above 15% for a single product.

Scientifically matched and deeply optimized transmission system

- ▶ It is configured with a world-leading automatic electronic gearbox including four forward gears and three backward gears able to be switched automatically or manually, and the automatic shift technology based on intelligent control can work based on the principle of the optimal transmission efficiency to formulate a reasonable shift strategy, which can simplify operation and simultaneously save energy.



- ▶ The fully hydraulic wet braking axle boasts a strong carrying capacity and a compact structure; the front axle can realize differential locking to achieve stronger adaptability to the working sites.



Engine of low emission and low fuel consumption

- ▶ Cummins engine, TIER-2/3 emission
- ▶ The engine of low noise and large torque plus the converter of a large capacity can maximize the efficiency and significantly reduce the fuel consumption during slow travelling.

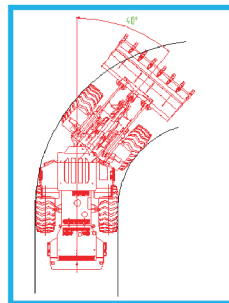
Larger shovel loader capacity

- ▶ The high-performance shovel loader configured can improve the filling coefficient, ensure the maximum material loading capacity, increase the productivity and reduce the fuel consumption.
- ▶ Shovel loader capacity: 4.0-7.0 m³
- ▶ Rated shovel loader capacity: 5.0 m³



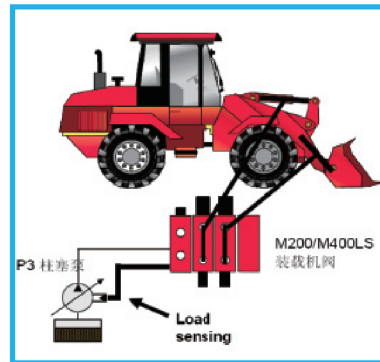
Long wheelbase / articulation angle 38°

- ▶ The long wheelbase and wide tread can offer good longitudinal and lateral stability.
- ▶ The articulation angle of 38° can better adapt to the site conditions.



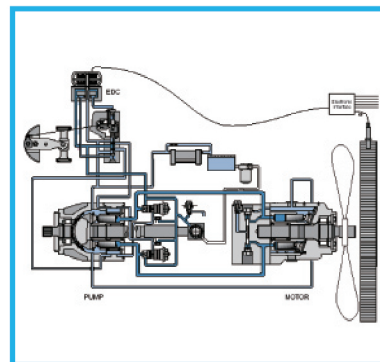
Energy-efficient hydraulic system

- ▶ By virtue of the load-sensitive variable technology, the pressure and flow rate can be provided according to the working needs to avoid high-pressure overflow losses with the fuel consumption reduced by 10%.
- ▶ A double-pump confluence system is applied, so the steering can be realized by amplifying the hydraulic flow and the single handle electronic manipulation can achieve high efficiency and sufficient flexibility.
- ▶ The application of the pressure unloading technology can realize automatic unloading, reduce the overflow losses and significantly improve the joint traction.
- ▶ The complete loading operations can only take less than 11.5 s, so it can achieve higher working efficiency.



Intelligent independent cooling system

- ▶ The motor and fan speed can be regulated in an intelligent manner based on the actual temperature to have the working temperature kept at the optimum temperature, which has improved the fuel efficiency and reduced the complete energy consumption by 5%.



People-oriented design, comfortable and safe

- ▶ The brand-new integrated FOPS&ROPS ultra-quiet cab in accordance with the European and American mainstream style has integrated today's global most advanced technology in its super-large space, featuring higher security, wider view and more comfortable control.

Optimal operating environment

- ▶ Its design follows the European and American mainstream style characterized by a super-large space, full-covered exquisite interiors and good sealing performance, and the damping noise reduction treatment of its cab and hood can create a comfortable operating environment with the noise $\leq 75\text{dB(A)}$ at the operator's ears.
- ▶ The steering column can be adjusted at will, with the ergonomic operating components and buttons ever within reach for excellent operability.
- ▶ The steering column can be adjusted at will, with the ergonomic operating components and buttons ever within reach for excellent operability.
- ▶ The operating handle has the FNR function integrated, so that easier and faster one-handed manipulation could be realized for the whole machine.
- ▶ A silicone oil shock absorber is connected with the frame to realize flexible transmission of the vibration, so that the cab internal vibration could be significantly reduced.



- ▶ The brand-new digital combination instruments feature beautiful and easy appearance and a higher degree of visualization.

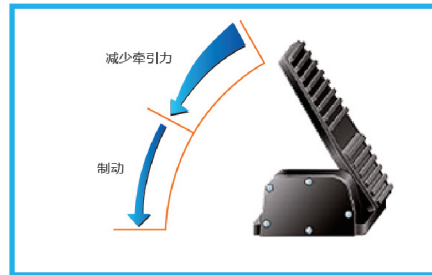


- ▶ Standard MP3 player, FM/AM radio and luxurious stereo

- ▶ The high-power air-conditioning system subject to intelligent temperature control, as well as the pressurized cab, can provide you with a temperate, ultra-quiet, clean and comfortable working environment.



- ▶ The double-pedal braking subject to the composite braking technology features beautiful appearance and sufficient nobleness. The clutch can be modulated and the torque input from the gearbox to the drive axle can change to the pedal angles, to minimize the impact and overheat during braking and thus improve the comfortableness and simultaneously reduce the energy consumption.



Safe and comfortable

- ▶ The cab adopts an integral structure with an embedded framework, able to prevent rolls and falling objects.
- ▶ The orthodrome hyperboloid windscreen can offer good vision.
- ▶ A reversing monitoring system is configured to reduce the rear blind area and improve the operation safety.



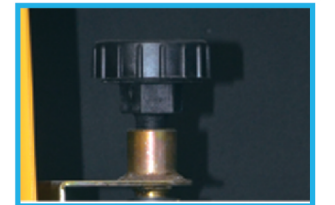
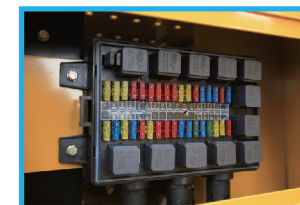
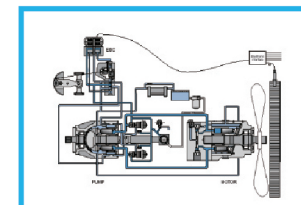
Easy service and convenient maintenance

XCMG's new FOPS&ROPS pressurized cab

The brand-new integrated FOPS&ROPS ultra-quiet cab in accordance with the European and American mainstream style has integrated today's global most advanced technology in its super-large space, featuring higher security, wider view and more comfortable control.

Hood with a new framework structure

- ▶ The engine hood with a new framework structure can provide a large side door and opening angle, so that the engine and radiator repair and maintenance could be much easier.
- ▶ The engine, fuel and transmission filters are ever within reach for convenient maintenance.



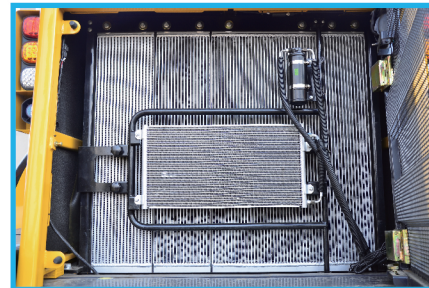
Automatic lubrication systems

- ▶ The lubricating grease can be automatically forced to all lubricating points quantitatively on a regular basis to ensure the friction points could be working long normally.
- ▶ The pressure testing ports of the hydraulic and transmission systems as well as the pressure testing device are led out from the same place to facilitate system testing and maintenance.
- ▶ The powder metallurgical dust respirator features excellent solidness, sufficient reliability and convenient maintenance.
- ▶ The integrated fuse box can indicate the running status of the whole electrical system and facilitate maintenance.
- ▶ The chamber-separate design of the hydraulic oil tank return pipe can facilitate maintenance.



Large-spaced radiator

- ▶ The radiator adopts a large-spaced and single row parallel structure featuring good cooling effect, convenient cleaning and reliable smoothness, able to deal with all kinds of dusty working conditions;
- ▶ The fan can roll back to facilitate radiator cleaning.



Electronic monitoring and sound-light alarm

- The multi-function combination instrument of high reliability can accurately monitor the engine running status and read the engine and gearbox faults through the CAN bus communication technology, and moreover, the LCD display with sound-light alarm instructions can accurately indicate the complete running status.



Customer support



- ▶ To ensure customers' worry-free use, XCMG has launched its baby-sitter "Three-Special Services", namely, special persons, special vehicles and special warehouses.
- ▶ It targets the whole life cycle, covering services within and beyond the warranty to provide a lifetime guarantee.

Apperance size

Description	Specification	Unit
Wheel base	3600	mm
Wheel tread	2460	mm
Dump clearance at maximum lift	3400	mm
Reach at maximum lift	1400	mm
Height of hinge at maximum lifting height	4600	mm
Working height(fully lifted)	6415	mm
Overall dimensions L × W × H	9300 × 3500 × 3845	mm

Main Specdicayion

Description	Specification	Unit
Rated opeating load	8000	kg
Bucket capacity	5	m ³
Operating weight	29500	kg
Maximum breakout force	260	kN
Maximum traction force	245	kN
Lifting time of boom	≤6.5	s
Total cycle time	≤11.5	s
Minimum turning radius (at tire center)	6200	mm
Articulation angle	±38	°
Gradeability	25	°
Tire size	29.5R25	
Engine model	CUMMINS QSM11—C335	
Rated Power/speed	250/2100	kW/rpm
Travel speed	I-gear(F/R)	7/7
	II-gear(F/R)	11.6/11.6
	III-gear(F/R)	24.5/24.5
	IV-gear(F)	35