



All Rights Reserved

Materials and specifications are subject to change without notice. Featured machines in photos may include additional equipment. See your XCMG dealer for available options.

"XCMG", "WWW.XCMG.COM", "XCMG For Your Success", as well as the corporate and product identity used herein, are trademarks of XCMG and may not be used without permission.



# XGC100T

## Telescopic Crawler Crane



Официальный дилер спецтехники XCMG в России  
+7 (495) 641-80-47  
info@techno-xcmg.ru

[www.xcmg.com](http://www.xcmg.com)

**XCMG Regional Departments:**

Europe	(+86-516) 87739238 87739271 87739228	Central Asia	(+86-516) 87739218 87739239 87739510
West Asia & North Africa	(+86-516) 87739251 87739202 87739223	North America	(+86-516) 87739285 87739551 87739713
Asia-Pacific	(+86-516) 87739500 87739529 87739233	South America	(+86-516) 87739196 87739714 87739187
Africa	(+86-516) 87739501 87739222 87739709		

XUZHOU CONSTRUCTION MACHINERY GROUP IMP. & EXP. CO., LTD  
Add: No.1, Tuolanshan Road, Xuzhou Economic Developing Zone, Jiangsu, China 221004  
Fax: (+86-516) 87739230  
E-mail: export@xcmg.com

Официальный дилер спецтехники XCMG в России  
+7 (495) 641-80-47  
info@techno-xcmg.ru

Официальный дилер спецтехники XCMG в России  
+7 (495) 641-80-47  
info@techno-xcmg.ru

Официальный дилер спецтехники XCMG в России  
+7 (495) 641-80-47  
info@techno-xcmg.ru

Официальный дилер спецтехники XCMG в России  
+7 (495) 641-80-47  
info@techno-xcmg.ru

Официальный дилер спецтехники XCMG в России  
+7 (495) 641-80-47  
info@techno-xcmg.ru

# 技术性能参数/整机基本尺寸 Technical Specification/Overall Dimension

# 详细介绍 Brief Introduction

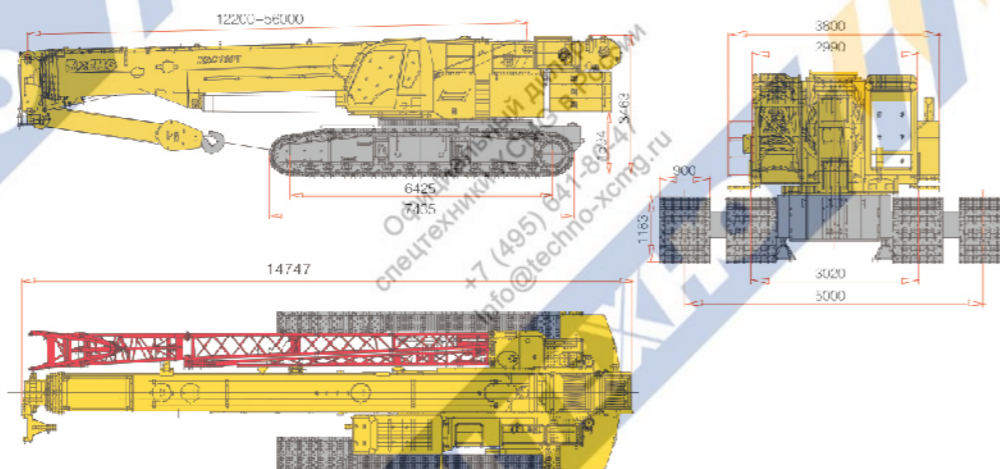
# XGC100T

## 目录 CONTENTS

- 技术性能参数/整机基本尺寸  
Technical Specification/Overall Dimension 1
- 详细介绍  
Brief Introduction 2
- 起重工况作业范围图  
Lifting Operation Range 5
- 起重工况性能表  
Lifting Performance Table 6
- 整机运输方案  
Transport Planning 10

类别Category	项目Items	单位Unit	参数Data	
尺寸参数 Dimension	整机全长 Overall length	mm	14747	
	整机全宽(伸/缩) Overall width (extension/retraction)	mm	5900/3920	
	整机全高 Overall height	mm	3463	
	主、从动轮中心距 Central distance from drive roller to driven roller	mm	6425	
	履带板宽 Track shoe width	mm	900	
重量参数 Weight	行驶状态总质量 Total mass in travel state	kg	104600	
	空载行驶速度 Max. travel speed with no load	km/h	3.2	
行驶参数 Travel	满载行驶速度 Max. travel speed with full load	km/h	1.0	
	最小离地间隙 Min. ground clearance	mm	304	
	最大爬坡能力 Max. grade-ability	%	60	
	接地比压 Ground pressure	MPa	0.089	
	发动机型号 Engine model	-	QSL	
动力参数 Power	发动机额定功率 Engine rated output power	kW	224	
	发动机额定转速 Engine rated rotation speed	r/min	1800	
	发动机排放标准 Engine emission standard	-	非道路三阶段 off-road, U.S.EPA Tier 3/EU Stage IIIA	
	液压油箱容积 Hydraulic oil tank	L	1000	
容积参数 Capacity	燃油箱容积 Fuel tank	L	600	
	最大额定总起重量 Max. rated lifting capacity	t	100	
主要性能参数 Main performance	最小额定幅度 Min. rated working radius	m	3	
	最大起重力矩 Max. load moment	基本臂 Base boom	kN·m	3920
		最长主臂 Max. length boom	kN·m	1605
	起升高度 Lifting height	基本臂 Base boom	m	13
		最长主臂 Max. length boom	m	55.6
		最长主臂 + 副臂 Max. length boom + Jib	m	71.2
	起重臂长度 Boom length	基本臂 Base boom	m	12.2
		最长主臂 Max. length boom	m	56
		最长主臂 + 副臂 Max. length boom + Jib	m	74.1
	副臂安装角 Jib offset angle	-	0°、15°、30°	
工作速度 Working speed	主臂起臂时间 Boom raising time	s	70	
	主臂全伸时间 Boom full extension time	s	488	
	最大回转速度 Max. slewing speed	r/min	2.2	
	起升速度(空载四层) Hoisting speed (no load at the 4th layer)	主起升机构 Main winch	m/min	140

本印刷品所包含的数据,会随着产品的不断升级而改变,请以实际产品为准  
Pictures and data in this catalog will change with the update and modification of products, so please take the actual vehicle as reference.



## 上车

### 发动机

美国原装进口康明斯QSL发动机 ( U.S.EPA Tier 3/EU Stage IIIA )  
额定功率/转速: 224kW/1800rpm。  
燃油箱: 有效容积600L。

### 起升机构

起升机构描述:  
空载起升速度: 0 ~ 140m/min。  
钢丝绳直径/长度:  
主卷钢丝绳: 22mm/265m。  
副卷钢丝绳: 22mm/165m。  
额定单绳拉力: 10.5t。

### 变幅机构

变幅机构描述: 单缸前支变幅  
主臂起臂时间 ≤ 70S

### 回转机构

回转机构布置在转台左右,由马达驱动。  
行星减速机,与回转支承外啮合齿轮进行回转,液压缓冲,具有自由滑转功能,保证作业安全。行星齿轮减速机具备常闭、片式制动器,工作可靠维修方便。  
回转支承: 采用三排滚柱外齿式回转支承,承载能力强,保证上车360°回转作业安全、平稳。  
回转速度: 2.2r/min

### 电气控制系统

采用 ECU 控制器,脚踏门、手油门,通过 CAN 实现对发动机转速的高效控制。  
系统采用供电方式为 DC 24V, 负极搭铁单线制。采用 PLC 可编程控制器作为控制系统的核心,系统由发动机控制、安全控制、先导控制、力矩限制器控制、辅助功能控制等几部分组成。通过显示器实时监测发动机水温、机油压力,当超过安全临界值时,蜂鸣器自动报警;同时,通过力矩限制器对当前工况的分析,当吊重量、仰角或幅度任意一直超出安全范围时,三色报警灯和蜂鸣器会发出“声光报警”并通过程序控制,限制危险动作的进行。

### 液压系统

电比例阀控制,控制精准,微动性好,调速范围广。起重作业伸缩、变幅及起升液压系统与行驶作业液压系统共用一恒功率 140 双泵,回转系统采用闭式泵,先导系统由排量为 10ml/r 的齿轮泵供油。  
采用成熟可靠的液压元件,成熟稳定的液压传动控制技术。操作简单,维修维护方便。与电气系统相配合,保证主机安全稳定。

## Crane Superstructure

### Engine

Cummins QSL engine imported from the U.S.A ( U.S.EPA Tier 3/EU Stage IIIA ), rated power / speed: 224kW/1800rpm.  
Fuel tank: effective capacity 600L.

### Hoist winch

Hoist winch description:  
Hoisting speed with no load: 0 ~ 140m / min.  
Wire rope diameter / length:  
Main winch rope: 22mm/265m.  
Auxiliary winch rope: 22mm/165m.  
Rated single line pull: 10.5t.

### Luffing winch

Luffing winch description: single cylinder front support luffing  
Boom raising times 70S

### Slewing unit

Slewing gear is on the left of the behind of turntable and driven by motor. The planetary reducer is meshed with slewing bearing outer gear, hydraulic buffering, with free swing function to ensure operation safety. There is constant closed, disk-type brake for reliable operation and easy for maintenance.  
Slewing gear: 3-row column outer slewing gear, with strong bearing capacity, ensuring superstructure 360° swing operation safe and reliable.  
Swing speed: 2.2r/min

### Electric control system

Use of ECU controller, foot accelerator, hand accelerator, efficient control of the engine speed by CAN. The system uses DC 24V for power supply, negative ground and single cable system. PLC programmable controller is used as the core of the control system, the system consists of several parts such as engine control, safety control, pilot control, load moment limiter control, auxiliary function control. Real-time monitoring through the display of engine temperature, oil pressure, buzzer warning when the load exceeds the safety limit, at the same time, analysis of current conditions such as lifting load weight, boom elevation angle or radius through load moment limiter, if any values exceed safe limits, a three-color warning light and buzzer will give "sound and light warning", and control and restriction of hazardous actions by program control.

### Hydraulic system

The hydraulic system adopts electronic-proportional valve control, featuring precise control, excellent fine movement and wide speed range. The hydraulic system of telescoping, luffing, hoisting and travel operation shares the same 140 double pump; swing system adopts closed type pump; and the pilot system gets oil supply from gear pump of 10ml/r displacement.  
The hydraulic system adopts mature and reliable hydraulic components and fluid drive control technology, featuring easy operation and maintenance; it combines with electrical system to ensure safety and reliability.

## 详细介绍 Brief Introduction

### 下车

下车包括车架、履带架、行走装置。车架和履带架采用插入式连接，销轴限位。

#### 履带伸缩

通过履带伸缩油缸实现履带梁的扩张与收缩。方便转场及狭窄环境通过。

#### 行走装置

由行走马达、减速机、驱动轮来实现整机的直线行走及转弯。空载行驶速度为0~3.2km/h，带载行驶速度为0~1.0 km/h。

#### 吊钩

名称	100t吊钩	65t吊钩	7t吊钩
重量 (Kg)	1316	763	250
数量	1	1	1
备注	标配	标配	标配

#### 平衡重

由上车平衡重与下车压重两部分组成，其中上车平衡重由1块12t、2块10t平衡重组成；下车压重由2块2t组成。起重作业时下车压重为必装件，上车平衡重可根据具体吊重量及臂长进行选装。见下表：

上车平衡重装配组合：

序号	平衡重重量(t)	平衡重组合方式
1	0	0 (平衡重不安装)
2	12	12
3	22	12+10
4	32	12+10+10

### 安全装置

安全装置包括急停开关、先导控制开关、力矩限制器、起升高度限制器、水平仪、回转锁止装置、三圈保护器等。

#### 紧急停止

按下急停开关，发动机熄火，整车动作停止。

### Crane Undercarriage

Crane carrier comprises car-body, crawler track and travel gear. Car-body and crawler are using the plug-in connection.

#### Track frame extension/retraction

retraction is achieved by track frame telescopic cylinder, facilitate site transition and narrow environment through.

#### Travel device

It realizes crane straight travel and steer through travel motor, reducer and drive roller. Travel with no load speed: 0 ~ 3.2 km/h; Travel with load speed: 0 ~ 1.0 km/h

#### Hook block

Name	100t hook block	65t hook block	7t hook block
Weight(kg)	1316	763	250
Qty.	1	1	1
Remark	standar	standard	standard

#### Counterweight

Counterweight system consists of superstructure and undercarriage counterweight. The superstructure counterweight consists of one 12t and two 10t counterweight slabs; the undercarriage counterweight consists of two 2t counterweight slabs. The undercarriage counterweight must be installed during operation, and the superstructure counterweight is installed according to lifting capacity and boom length. See the table below:

Superstructure counterweight combination:

No.	Counterweight weight (t)	Counterweight combination type
1	0	0 ( no counterweight )
2	12	12
3	22	12+10
4	32	12+10+10

### Safety Devices

Safety devices comprise emergency stop switch, pilot control switch, load moment limiter, hoist limit switch, level meter, slewing locking device, rope-end limiter, etc.

#### Emergency stop switch

Press the emergency stop switch to stop the engine, and to stop all the machine movements.

## 详细介绍 Brief Introduction

#### 先导控制开关

按下开关后，起重作业电气系统才能正常操作。

#### 力矩限制器

当吊重量大于额定起重量，吊臂仰角超出额定范围时，或幅度超出额定范围时，力矩器会发出信号，限制危险动作的继续进行。

#### 起升高度限位器

由主、副臂端部限位开关和重锤构成，当吊钩中心起升至距吊臂滑轮中心约710mm时，起升动作自动停止。

#### 水平仪

转台内部、回转支承上方装有水平仪，监控地面是否满足作业要求。

#### 回转锁止装置

保证运输时转台有效锁止，防止其自由滑转。

#### 三圈保护器

当吊钩下降至卷扬钢丝绳剩余三至五圈时，落钩自动停止。

#### Pilot control switch

Press the switch, the electric system for lifting operation starts to a normal work.

#### LMI

The LMI will send our alarm signal to prevent dangerous movement when the lifting capacity exceeds the rated capacity, boom angle exceeds rated area or radius exceeds rated area.

#### Hoist limit switch

It consists of boom and jib end limit switch and the weight, which will automatically stop the hoisting movement when hook block center is raised 710mm to boom sheave center.

#### Level meter

A level meter is set inside the turntable and on the top of swing, to monitor the ground surface for operation requirements.

#### Slewing locking device

The device is used to lock the turntable during transport to avoid free swing.

#### Rope-end limiter

The device is used to stop hook block lowering when the hook block lowering down and only three to five turns of wire rope left on the winch drum.

# 起重工况性能表 Lifting Performance Table

# 起重工况性能表 Lifting Performance Table

# XGC100T

副臂工况，履带全伸，静止吊载（不行走），上车配重32t

Jib working condition, crawler fully extends, static lifting (no travel), superstructure counterweight 32t.

(1) 副臂10.6m, 上车配重32t, 履带全伸

副臂10.6m, 上车配重32t, 履带全伸

主臂长度 副臂角度	47.9			51.9			56		
	0°	15°	30°	0°	15°	30°	0°	15°	30°
12	7.0								
14	6.8			6.7					
16	6.4	5.0		6.3	5.0		5.5		
18	5.9	4.9	3.3	5.9	4.8	3.3	5.3	4.7	
20	5.6	4.9	3.3	5.6	4.4	3.2	5.0	4.4	3.2
22	5.3	4.8	3.2	5.3	4.2	3.2	4.8	4.2	3.1
24	5.1	4.5	3.1	5.1	4.0	3.0	4.3	4.0	3.0
26	4.7	4.0	3.0	4.7	3.9	3.0	4.1	3.9	3.0
28	4.5	3.8	2.8	4.5	3.7	2.8	3.8	3.7	2.8
30	4.2	3.6	2.8	4.2	3.6	2.8	3.6	3.3	2.8
32	4.0	3.5	2.7	4.0	3.5	2.7	3.5	3.2	2.7
34	3.7	3.4	2.7	3.6	3.4	2.7	3.3	3.0	2.4
36	3.5	3.3	2.7	3.3	3.2	2.7	3.1	2.8	2.2
38	3.2	3.2	2.5	3.0	2.9	2.5	2.9	2.6	2.1
40	2.9	2.9	2.5	2.6	2.8	2.4	2.4	2.2	2.0
42	2.6	2.7	2.4	2.3	2.4	2.4	2.3	2.1	1.9
44	2.2	2.4	2.3	1.9	2.1	2.2	1.9	1.7	1.6
46		2.1	2.1	1.6	1.8	1.8	1.6	1.5	1.3
48			1.8	1.4	1.5	1.5	1.4	1.3	1.2
50					1.2	1.3		1.1	1.1
52								1.1	1.0
主臂仰角	79.8	78.1	78.1	79.1	79.4	79.4	78.5	78.8	78.8
	41.4	40.2	37.4	40.4	39.1	40.1	45.3	44.4	42.5

(2) 副臂18.1m, 上车配重32t, 履带全伸

副臂18.1m, 上车配重32t, 履带全伸

主臂长度 副臂角度	47.9			51.9			56		
	0°	15°	30°	0°	15°	30°	0°	15°	30°
14	3.2								
16	3.0			3.2					
18	2.9	2.2		3.0			3.0		
20	2.8	2.2		2.8	2.2		2.8		
22	2.7	2.1	1.9	2.8	2.1		2.8	2.0	
24	2.6	2.0	1.8	2.6	2.0	1.8	2.6	2.0	
26	2.6	2.0	1.8	2.6	2.0	1.8	2.6	2.0	1.6
28	2.4	2.0	1.7	2.4	2.0	1.6	2.4	2.0	1.6
30	2.4	2.0	1.7	2.4	2.0	1.6	2.4	1.8	1.6
32	2.2	1.8	1.6	2.2	1.8	1.6	2.2	1.8	1.6
34	2.2	1.8	1.6	2.2	1.8	1.6	2.0	1.8	1.6
36	2.2	1.8	1.6	2.0	1.8	1.6	1.8	1.8	1.5
38	2.1	1.8	1.6	2.0	1.8	1.6	1.7	1.5	1.5
40	2.0	1.8	1.6	1.9	1.8	1.6	1.5	1.4	1.3
42	2.0	1.7	1.6	1.6	1.5	1.2	1.4	1.3	1.3
44	2.0	1.6	1.5	1.5	1.4	1.1	1.3	1.3	1.3
46	1.8	1.6	1.4	1.5	1.5	1.1	1.2	1.2	1.2
48	1.5	1.6	1.4	1.5	1.5	1.0	1.1	1.1	1.1
50	1.3	1.5	1.4	1.4	1.3	1.2		0.9	0.9
52		1.2	1.3	1.2	1.3	1.2			
54			1.1		1.1	1.2			
主臂仰角	79.7	80	79.7	79.1	79.4	79.1	78.7	78.9	78.6
	41.4	41.5	39.9	40.2	43.4	45.4	51.7	52.6	54.9
伸缩组合		12222			22222			33333	

说明:

1. 上述表格中幅度和臂架长度单位为m, 起重重量单位为t.
2. 表中给定数值是在地面坚实、平整的状态下, 起重机的额定起重重量. 表中工作幅度为吊载后的实际幅度.
3. 主臂臂长 ≤ 39.9m 时, 整机可带载行走, 其余主臂工况以及副臂工况不允许带载和空载行走.
4. 带载行走时要求履带必须为全伸状态.
5. 吊钩共三种, 100t (主臂工况)、65t (主臂工况)、7t (副臂工况和臂端滑轮工况), 各吊钩重量如下表:

吊钩	100t	65t	7t
重量 (Kg)	1316	763	250

6. 上述表格中的数据是下车平衡重必须安装时, 整机的起重性能。

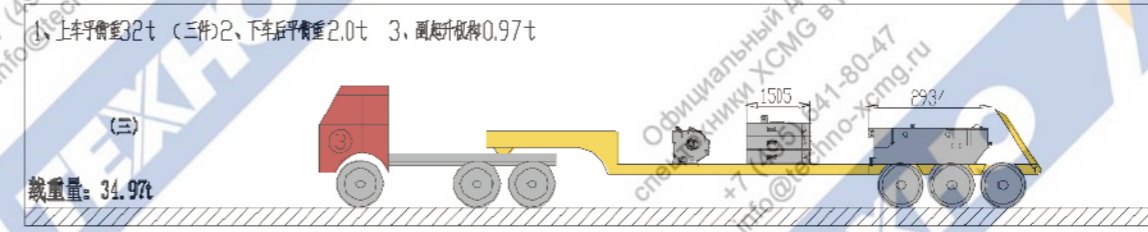
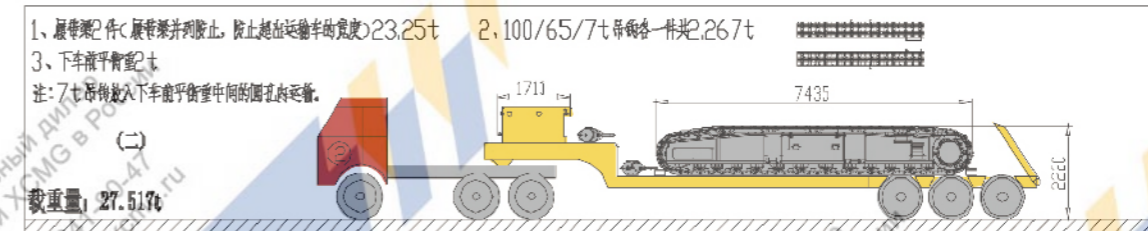
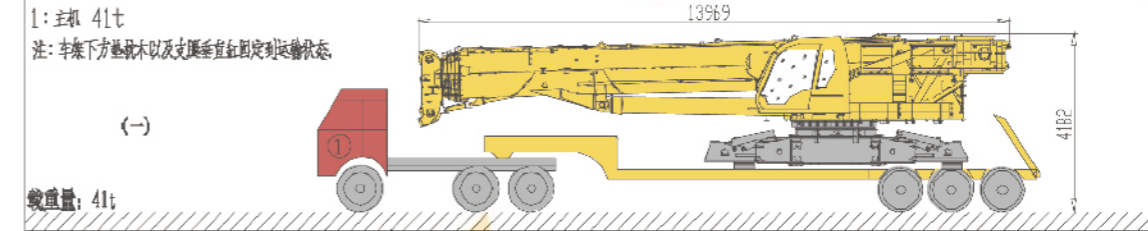
Note:

1. Radius and boom length unit m, lifting capacity unit t.
2. The value in the table is the rated lifting capacity on firm and even ground. The working radius is the actual radius after the load is lifted.
3. When boom length ≤ 39.9m, the crane can travel with load, the max. and it is forbidden to travel with or without load in other boom and jib working condition.
4. Travel with load with crawlers fully extended.
5. Three types of hook block, 100t (boom working condition), 65t (boom working condition) and 7t (jib working condition), and the weight of each hook is shown in the table below.

Hook	100t	65t	7t
Weight ( Kg )	1316	763	250

6. The data in the table above is the lifting capacity for crane with undercarriage counterweight.

## 整机运输方案 Transport Planning



备注:

1. 图中尺寸均为设计尺寸, 由于制造误差, 可能稍有不同.
2. 运输时履带架前后应加垫木防止运输过程中发生滑动.
3. 以上零件运输尺寸为示意图, 未按比例绘制, 所标尺寸为设计值, 不包括包装.

Note:

1. The dimension in the diagram is design dimension which will be slightly different according to manufacturing error.
2. Place wood block in front and behind track frame to prevent slide during transport.
3. The transport dimension is sketch map, not drawn in proportion, and the dimension on the diagram is design value without package.

# 起重工况性能表 Lifting Performance Table

幅度Radius	35.9			39.9			43.9			47.9		51.9	56
7	35.0	29.5	19.9										
8	32.9	27.6	18.3	28.9	21.8	18.6							
9	30.5	25.9	16.9	27.0	20.4	17.3	22.9	17.4	17.2				
10	28.3	24.4	15.7	25.3	19.2	16.2	21.7	16.4	16.3	18.2	16.0		
12	23.5	21.8	13.9	22.3	17.1	14.3	19.5	14.7	14.5	16.8	14.5	12.4	
14	18.5	19.4	12.1	18.5	15.3	12.8	17.5	13.3	13.1	15.2	13.2	11.9	10.7
16	14.9	15.8	10.8	15.0	13.9	11.5	15.2	11.9	11.8	13.5	12.1	11.3	10.1
18	12.3	13.2	9.7	12.3	12.6	10.3	12.5	10.9	10.7	12.0	11.1	10.5	9.1
20	10.2	11.1	8.7	10.3	11.4	9.3	10.5	9.9	9.7	10.8	10.1	9.4	8.2
22	8.6	9.5	7.9	8.6	9.8	8.6	8.8	9.1	8.8	9.1	9.2	8.6	7.4
24	7.3	8.2	7.3	7.3	8.4	7.9	7.5	8.4	8.1	7.8	8.4	7.8	6.7
26	6.2	7.0	6.7	6.2	7.3	7.3	6.4	7.4	7.4	6.7	7.3	7.0	6.1
28	5.3	6.1	6.2	5.3	6.4	6.8	5.5	6.5	6.6	5.8	6.4	6.1	5.6
30	4.5	5.3	5.7	4.5	5.6	6.0	4.7	5.7	5.8	5.0	5.6	5.3	5.1
32				3.8	4.9	5.3	4.0	5.0	5.1	4.3	4.9	4.6	4.6
34				3.2	4.3	4.7	3.4	4.4	4.5	3.7	4.3	4.0	4.1
36							2.9	3.9	4.0	3.2	3.8	3.5	3.6
38							2.4	3.4	3.5	2.7	3.3	3.0	2.9
40										2.3	2.9	2.6	2.6
42										1.9	2.5	2.2	2.2
44												1.9	1.8
46												1.6	1.5
48													1.3
50													1.0
组合	21111	11112	00222	22111	11122	01222	22211	11222	02222	22221	12222	22222	33333
最大仰角	79.5			79.6			79.7			79.8		78.9	78.2
最小仰角	29.6			28.2			27			25.8		30.8	30.8
倍率			4							3			

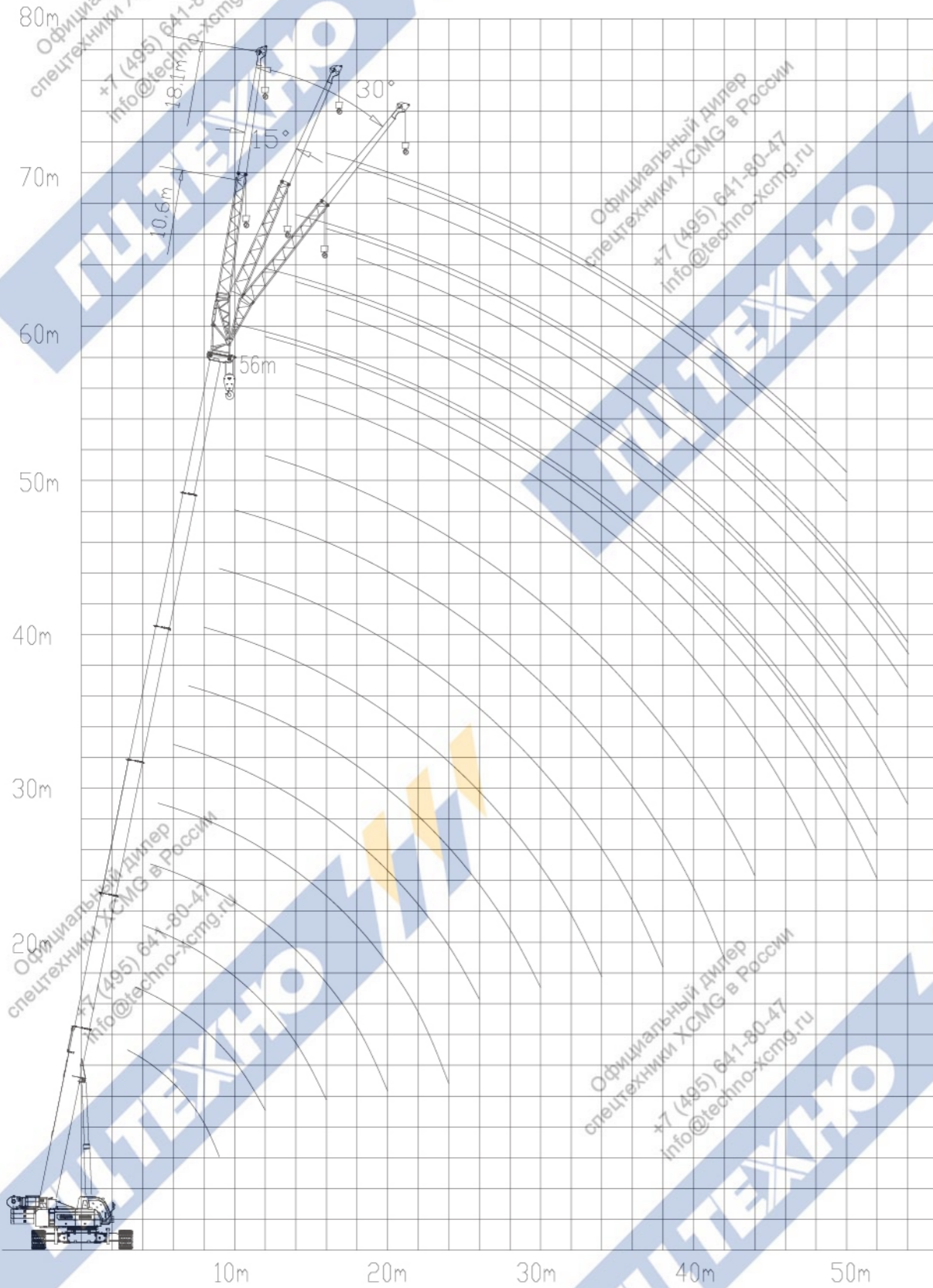
# 起重工况性能表 Lifting Performance Table

XGC100T

主臂工况，履带全伸，带载行驶，上车配重32t  
Boom working condition, crawler fully extends, travel with load, superstructure counterweight 32t.

幅度Radius	12.2		16.1		20.1		24		28		31.9	35.9	39.9
3	90.0												
3.5	89.1	75.3	66.0										
4	88.7	72.6	62.9	70.7	35.0								
4.5	78.5	69.2	58.6	66.6	33.5	52.0	35.2						
5	72.0	63.3	54.9	61.0	32.0	48.3	33.9	41.4	32.6				
6	57.2	52.0	48.8	51.4	29.3	45.1	31.2	40.6	30.3	30.5			
7	42.6	44.1	41.6	42.0	27.1	41.2	28.2	38.6	27.9	28.6	21.0		
8	33.6	37.5	35.0	34.9	24.9	34.6	25.7	33.2	25.7	26.6	19.7	14.4	
9		28.3	28.9	28.7	22.7	28.6	24.5	27.5	22.7	22.4	18.3	13.5	
10		23.8	24.3	24.2	20.7	24.1	20.9	23.2	19.3	19.0	17.0	12.6	
12				18.1	15.7	17.9	15.9	17.4	14.6	14.3	14.1	11.1	
14				14.1	12.4	13.9	12.5	13.6	11.5	11.3	11.1	9.3	
16						11.1	10.2	11.0	9.4	9.2	8.9	7.5	
18								8.9	7.8	7.6	7.4	6.2	
20								7.4	6.5	6.4	6.1	5.2	
22										5.4	5.2	4.3	
24											4.4	3.7	
26											3.7	3.1	
28												2.7	
主臂组合	0	00100	00010	01100	00011	11100	00111	11110	01111	11111	21111	22111	
最大仰角	70.3	74		76.4		78.1		79.3		79.4	79.5	79.6	
最小仰角	37.6	45		40		44.6		41.2		44.6	42.1	44.8	
倍率		10		8			6					4	
吊钩			100t					65t					

# 起重工况作业范围图 Lifting Operation Range



# 起重工况性能表 Lifting Performance Table

**XGC100T**

主臂工况, 履带全伸, 静止吊载 (不行走), 上车配重32t  
 Boom working condition, crawler fully extends, static lifting (no travel), superstructure counterweight 32t.

幅度Radius	12.2	16.1		20.1		24		28		31.9	
3	100.0										
3.5	99.0	94.1	82.5	52.5							
4	98.6	90.8	78.6	49.7	88.4	53.9	33.1				
4.5	87.2	86.5	73.3	47.0	83.2	51.6	31.1	65.0	54.2	32.5	
5	80.0	79.1	68.7	44.7	76.3	49.2	29.4	60.4	52.2	30.8	55.2
6	65.6	65.0	61.0	40.6	64.2	45.0	26.6	56.3	47.9	27.9	54.1
7	53.0	55.1	52.1	36.9	52.5	41.6	24.0	51.5	43.4	25.2	51.5
8	42.1	48.9	43.7	33.7	43.6	38.3	22.2	43.3	39.6	23.2	44.3
9	34.4	35.4	36.1	31.3	35.9	34.9	20.4	35.7	37.6	21.5	36.6
10		29.8	30.4	29.3	30.3	31.9	18.8	30.1	32.2	19.9	30.9
12		22.2	22.7	23.1	22.6	24.1	16.3	22.4	24.4	17.4	23.2
14					17.6	19.0	14.5	17.4	19.3	15.4	18.1
16					14.0	15.4	13.0	13.9	15.7	13.9	14.6
18								11.2	13.0	12.5	11.9
20								9.2	11.0	11.3	9.9
22										8.3	9.3
24										7.0	8.0
26											6.5
组合	0	00100	00010	00001	01100	00011	00002	11100	00111	00012	11110
最大仰角	70.3	74		76.4		78.1		79.3		79.4	
最小仰角	26.3	31.7		28		25.3		23.2		31.4	
倍率		12		10		7		6			