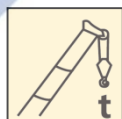


# XCT25L4\_S汽车起重机 / Truck Crane

## 技术规格书

Basic technical specification

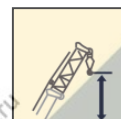
Официальный дилер  
спецтехники XCMG в России  
+7 (495) 641-80-47  
info@techno-xcmg.ru



25 t



34 m



41.9 m



Официальный дилер  
спецтехники XCMG в России  
+7 (495) 641-80-47  
info@techno-xcmg.ru

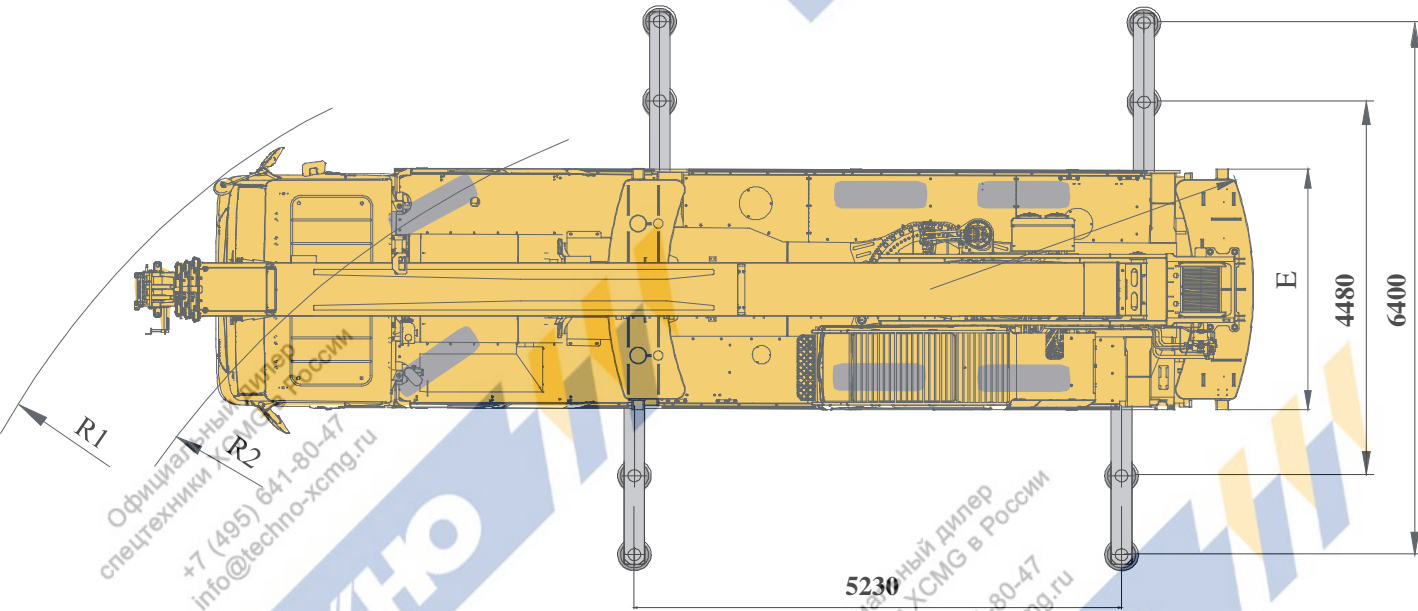
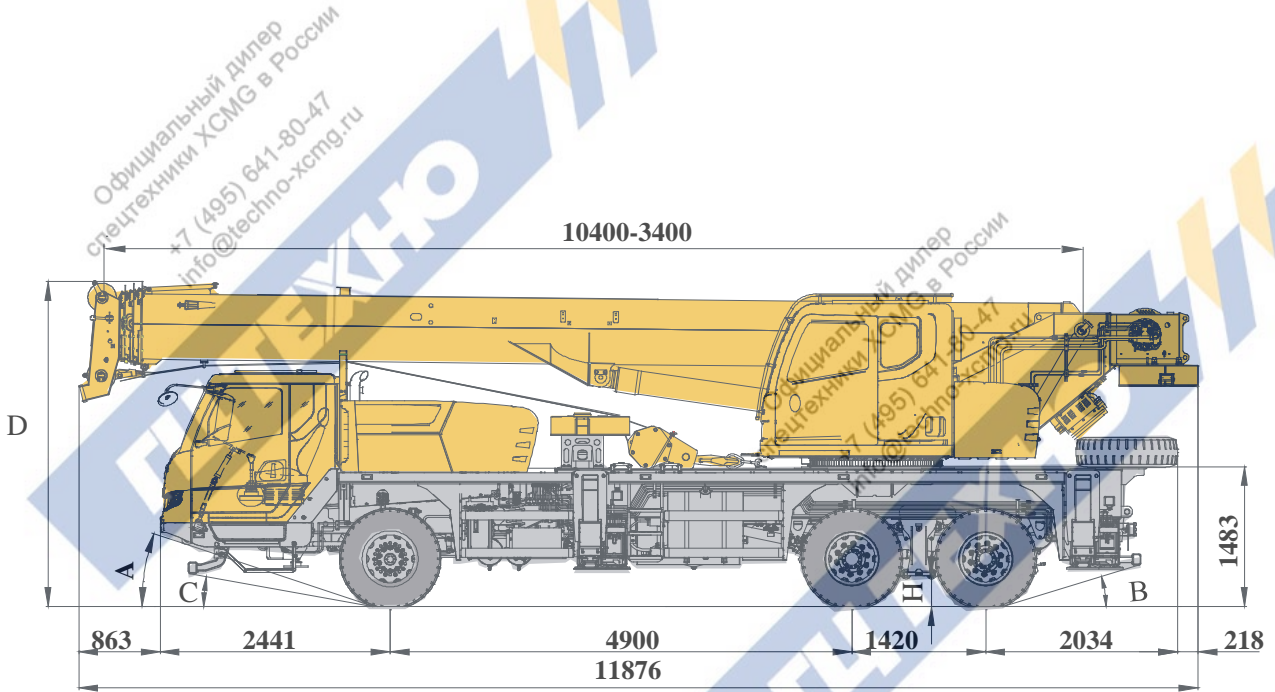
Официальный дилер  
спецтехники XCMG в России  
+7 (495) 641-80-47  
info@techno-xcmg.ru

# 目录 Content

目录 Content	
尺寸参数 Dimensions	4-6
技术规格 Product Specifications	6-10
重量 Weight	11
作业速度 Working speeds	12
平衡重 Counterweight	13
臂架组合方案 Boom / Jib combinations	14
主臂 Boom	15-16
副臂 Jib	17-18
注意事项 Notes	19
符号标识 Description of symbols	20
主要技术参数表 Transportation plan	21-22

# 尺寸参数

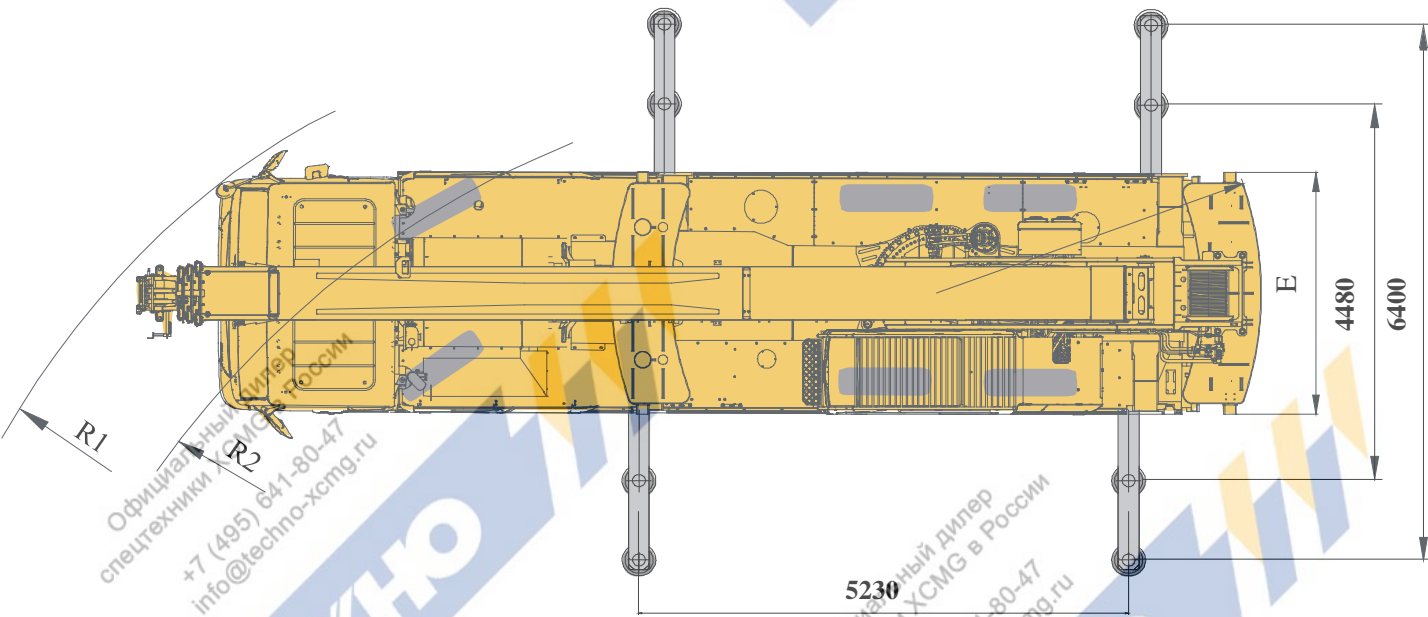
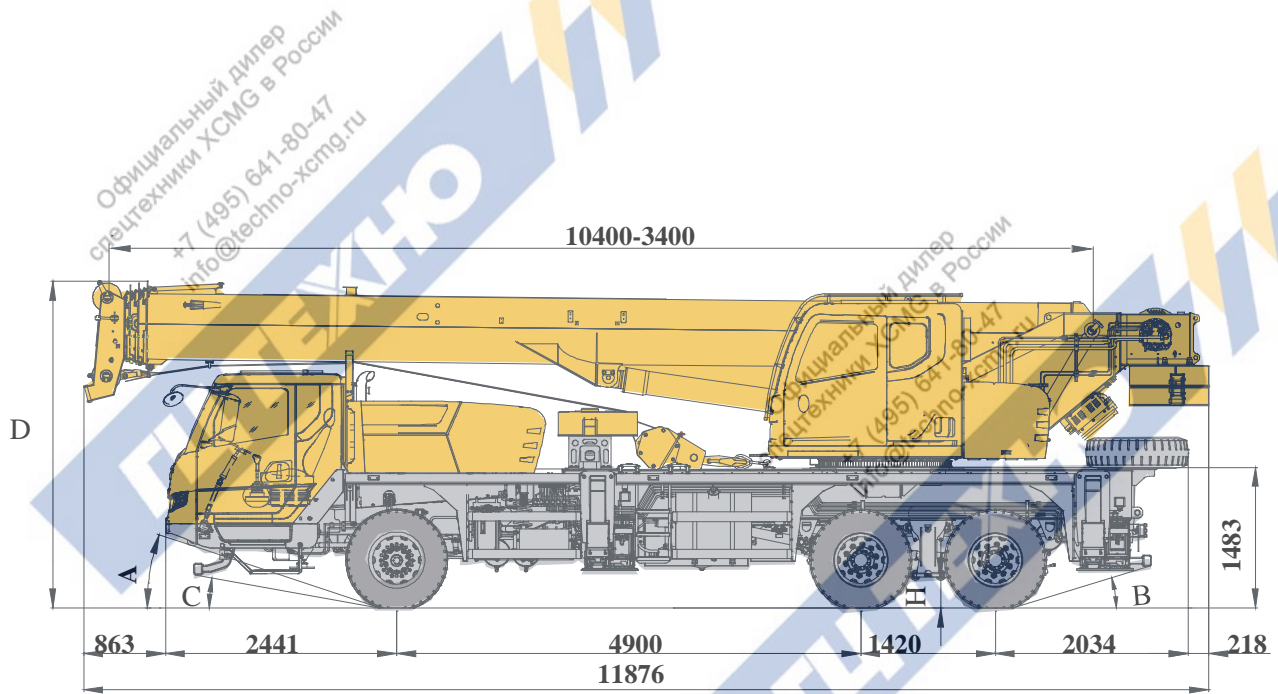
## Dimensions



	A	B	C	D	E	R1	R2	H
315/80R22.5	18.5°	17°	10.5°	3450	2550	12100	11500	248.5

# 尺寸参数

## Dimensions



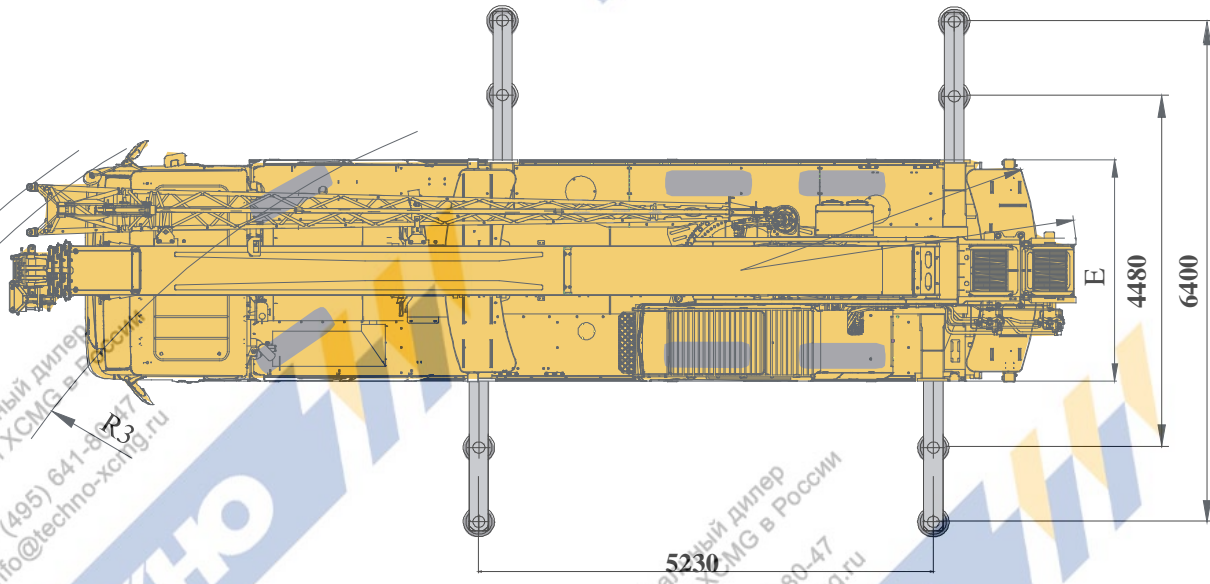
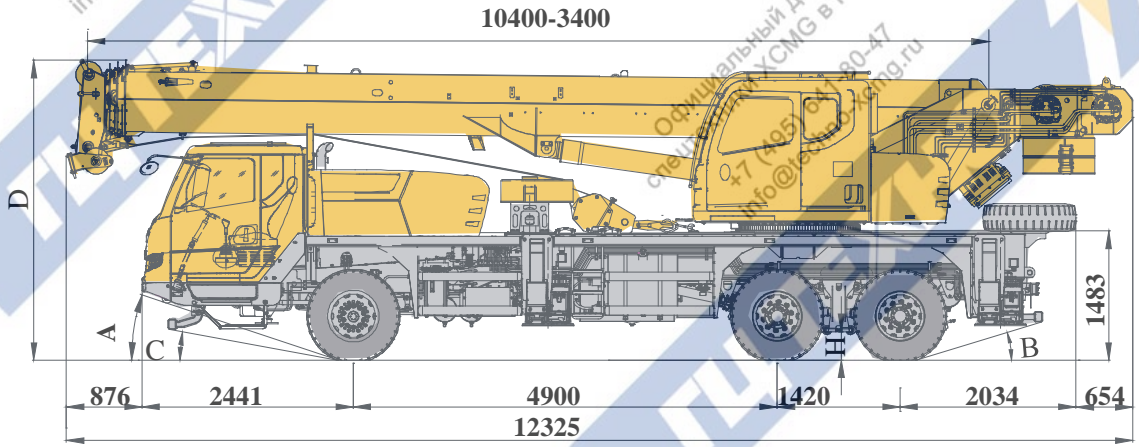
	A	B	C	D	E	R1	R2	H
315/80R22.5	18.5°	17°	10.5°	3450	2550	12100	11500	248.5



# 尺寸参数 Dimensions

Официальный дилер  
спецтехники XCMG в России  
+7 (495) 641-80-47  
info@techno-xcmg.ru


Официальный дилер  
спецтехники XCMG в России  
+7 (495) 641-80-47  
info@techno-xcmg.ru



	A	B	C	D	E	R1	R2	R3	H
315/80R22.5	18.5°	17°	10.5°	3450	2550	12500	12100	11500	248.5

# 技术规格

## Technical specifications

	<b>Chassis</b>	
<b>Frame</b>	Designed and manufactured by XCMG, with all covered walking surface, anti-torsion box structure and optimal load-bearing structure design, made of imported high strength steel.	●
<b>Outriggers</b>	4 outriggers, H-shaped arrangement, lateral and vertical outrigger controlled by the hydraulic control. Both sides of the chassis equipped with electronic control console, the console installed with luminous level, lighting and speed buttons; outrigger cylinders equipped with one-way valve, and the vertical outrigger has two-way hydraulic lock. Float dimension: $\phi 340\text{mm}$ Reaction force of outrigger at max. lifting load: 326KN	●
<b>Engine</b>	SC7H260Q5, in-line six-cylinder water-cooled EFI diesel engine, manufactured by SDEC, rated power 192kW /2300rpm, max. torque 1000N.m / 1200 ~ 1600rpm, the Europe V emission standards. Fuel tank capacity: 260L	●
<b>Transmission</b>	Mechanical transmission manufactured by Fast, with 8 forward gears and 2 reverse gears available	●
<b>Axles</b>	High-strength axles, four axles for driving: 10×8.	●
<b>Suspension</b>	Front suspension: longitudinal leaf spring suspension with barrel shock absorber; Rear suspension: Leaf-spring balance suspension.	●
<b>Tires</b>	Tire specifications: 315/80R22.5	●
	Tire specifications: 14.00R20	○


<b>Brakes</b>	Service brake: double-circuit air pressure brake, acting on all wheels. Parking brake: spring energy brake, acting on wheels of 2-3 axles. Auxiliary brake: engine retarded brake.	●
<b>Steering</b>	Mechanically steering mechanism with hydraulic power assisted.	●
<b>Driver's cab</b>	Full-dimension driver's cab, two passengers are allowable. Equipped with radio, adjustable seats, steering wheel, safety glasses, electrically controlled windshield washer, electrically operated rearview mirror, electrically operated door window glove box, and 6 kilograms fire extinguisher. Heater and air conditioner are available.	●
	Independent fuel oil heater	○
<b>Electrical system</b>	24V DC, negative ground, 2 batteries.	●
<b>Safety devices</b>	Double-way hydraulic valve	●
	GLONASS satellite positioning	●
	ABS	●


Официальный дилер  
спецтехники XCMG в России  
+7 (495) 641-80-47  
info@techno-xcmg.ru

Официальный дилер  
спецтехники XCMG в России  
+7 (495) 641-80-47  
info@techno-xcmg.ru

# 技术规格

## Technical specifications

	Superstructure	
<b>Frame</b>	Designed and manufactured by XCMG, made of high strength steel.	●
<b>Hydraulic system</b>	Constant displacement pump + load-sensing multi-way valve; with confluence technology adopted for multi-way valve, double-pump confluence can be realized when lifting, elevating or telescoping operation is carried out independently. Max. hoisting speed of main and auxiliary winches is up to 125 m/min. For simultaneous movements of main/auxiliary winch, telescoping or elevating, the two pumps supply oil separately.	●
<b>Operating mode</b>	Hydraulic pilot control of all crane movements using two control levers. All crane movements are controlled by hydraulic pump and proportional valve.	●
<b>Main and Auxiliary winch system</b>	Hydraulic control is used for speed regulation. The system is driven by a hydraulic motor through a planetary gear reducer, with a normally closed brake, balance valve and a grooved drum equipped. It has features of high speed with a light load and low speed with a heavy load.	●
<b>Slewing system</b>	Single-row, contact-ball, external tooth slewing ring, with a single slewing gear located at right side, is driven by the planetary gear reducer of slewing mechanism, which is driven by a hydraulic motor, and may continuously slew 360°. Power control or free slewing function is available, and the slewing speed may be infinitely regulated.	●
<b>Elevating system</b>	Single cylinder with self-compensation balanced valve.	●
<b>Operator's cab</b>	Ergonomically designed, with swing-out door and adjustable seat. It is equipped with safe glass and roof protective grille. Windshield is equipped with sun visor. Heater and air conditioning device is standard. Independent fuel oil heater	● ● ○
<b>counterweight</b>	4.5 t	●
<b>Hook block</b>	25t Hook block	●
	3t Hook block	○

	Boom and jib system	
<b>Boom</b>	Four-section boom with U-shape profile is made of high strength steel, with special anti-deformation design. Single cylinder plus ropes is used to telescope the boom. Boom length: 10.4m~34 m	●
<b>Single top</b>	Fitted at boom head, used for single line operation. Its lifting performance is the same as that for boom, but the maximum lifting load does not exceed 2.8 t.	●
<b>Fixed jib</b>	The jib consists of a connecting bracket, a rotating bracket and a foldable lattice jib. Three offset angles of 0°, 15° and 30° are available. It is stowed along the side of the boom. Fixed jib length: 8.3m.	○
<b>Safety device</b>	Hydraulic balance valve; Hydraulic relief valve; Load moment limiter; Lowering limiter prevents wire rope from over releasing; Anti-two block at boom head prevents wire rope from over-winding; Free sliding and slewing locking.	●
	Anemometer	○
	Functions for EAC certificate, including virtual wall, low temperature warning, high voltage warning functions and load emergency lowering for safe	○

**Product parts list is as mentioned above. Please refer to the product quotation for specific parts.**

**Symbol explanation:**

- — it means the standard configuration;
- — it means the optional configuration.



## 重量 Weight



车桥 Axle	1	2	3	总重量 Total weight
t	9	8	8	25 <sup>1)</sup>
t	8.6	9.2	9.2	27 <sup>2)</sup>
t	9	9.5	9.5	28 <sup>3)</sup>

1) 上车携带4节主臂、主卷、25t钩、2.5t平衡重；不带3t钩、副臂、副卷、2t平衡重；  
驱动形式：6×4；轮胎规格：315/80R22.5；

1) For the superstructure, 4 boom sections, main winch, 25t hook block and 2.5t counterweight are included, while 3t hook block, jib, auxiliary winch and 2t counterweight are excluded.

Driving type: 6×4; tire specification: 315/80R22.5.

2) 上车携带4节主臂、主卷、25t钩、4.5t平衡重；不带3t钩、副臂、副卷；  
驱动形式：6×4；轮胎规格：315/80R22.5；

2) For the superstructure, 4 boom sections, main winch, 25t hook block and 4.5t counterweight are included, while 3t hook block, jib and auxiliary winch are excluded.

Driving type: 6×4; tire specification: 315/80R22.5.

3) 上车携带4节主臂、主卷、25t钩、4.5t平衡重、带3t钩、副臂、副卷；  
驱动形式：6×4；轮胎规格：315/80R22.5；

3) For the superstructure, 4 boom sections, main winch, 25t hook block and 4.5t counterweight, 3t hook block, jib and auxiliary winch are included.

Driving type: 6×4; tire specification: 315/80R22.5.



吊钩 Hook	倍率 No. of lines	吊钩重量 Weight kg	吊钩尺寸 Dimensions mm	备注 Remarks
25t	10	297	1175×450×417	单钩, Single hook, 标配 Standard
3t	1	60	518×236×236	单钩 Single hook, 选装 Optional



## 作业速度

### Working speeds



315/80R22.5



3 ~ 80



45%



作业机构  
Drive

作业速度  
Working speed

最大单绳拉力  
Max. single line pull

钢丝绳直径/长度  
Rope diameter/ length



0-125

m/min, 单绳, 第四层  
m/min, single line, 4th layer

27.6 kN

14 mm/170 m



0-125

m/min, 单绳, 第四层  
m/min, single line, 4th layer

27.6kN

14 mm/110 m



0-2.5 r/min



从-2°抬起至80°约35s  
Approx. 35s for boom elevation from -2° to 80°



从10.4m伸出至34m约55s  
Approx. 55s for boom extension from 10.4m to 34m

Официальный дилер  
спецтехники XCMG в России  
+7 (495) 641-80-47  
info@techno-xcmg.ru

Официальный дилер  
спецтехники XCMG в России  
+7 (495) 641-80-47  
info@techno-xcmg.ru

# 平衡重

## Counterweight

Официальный дилер  
спецтехники XCMG в России  
+7 (495) 641-80-47  
info@techno-xcmg.ru



Официальный дилер  
спецтехники XCMG в России  
+7 (495) 641-80-47  
info@techno-xcmg.ru



平衡重 Counterweight	A	B	C
尺寸 (长×宽×高) m Size (L×W×H) m	2334×833×221	2334×833×229	2334×833×295
重量 t Weight t	1.4	1.1	2.0
工况模式 Working mode	4.5t	2.5t	
组合形式 Combinations	A+B+C		A+B

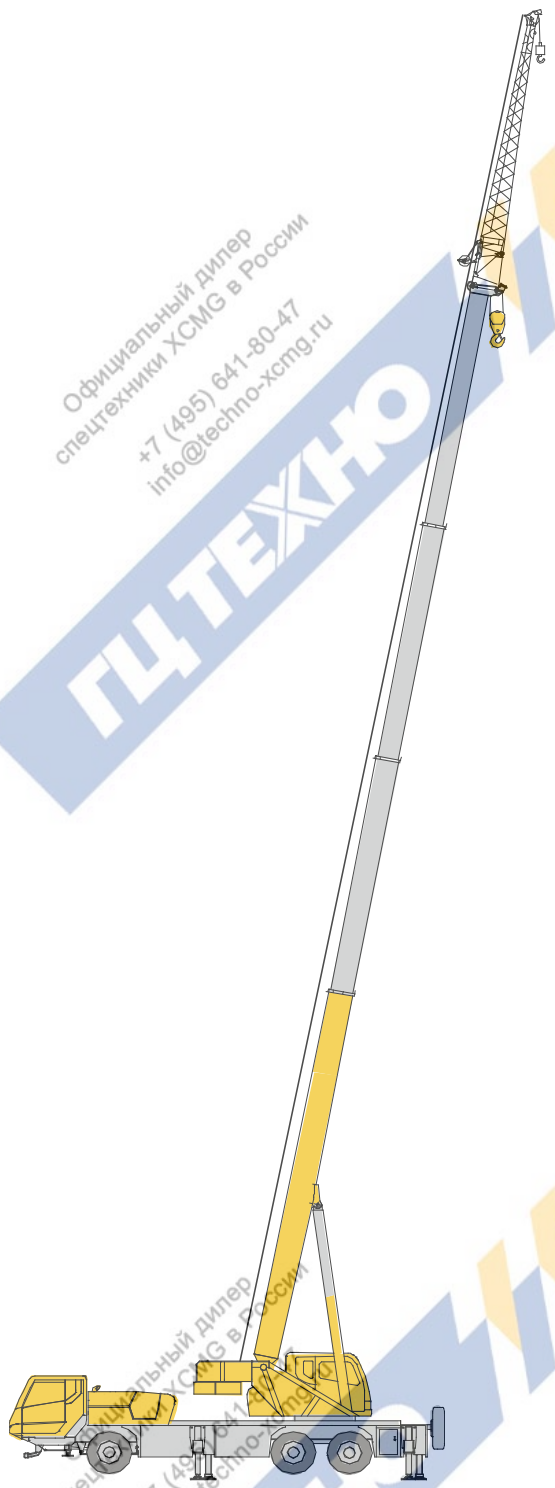
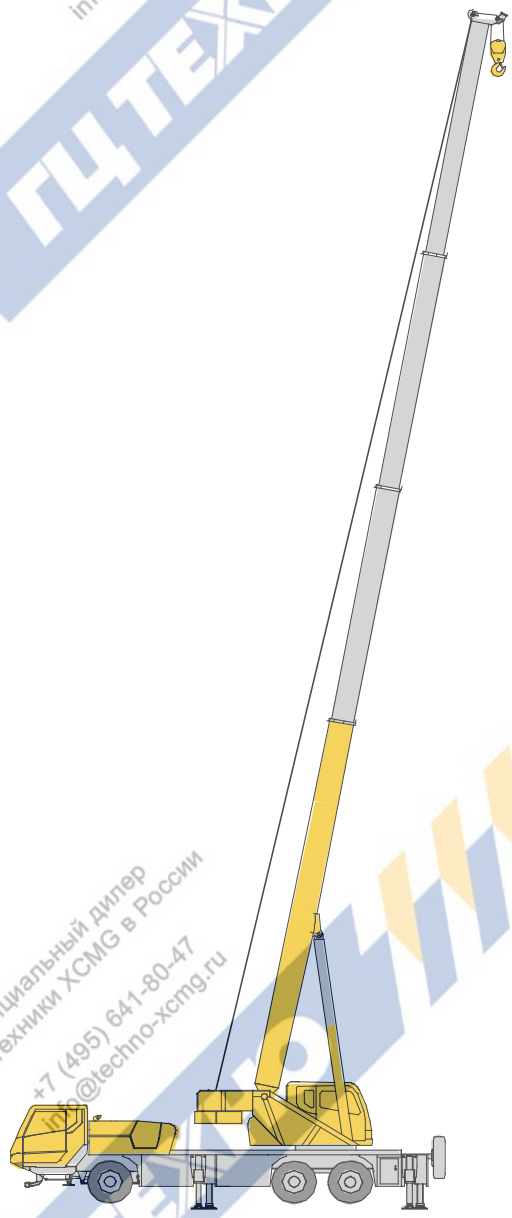
Официальный дилер  
спецтехники XCMG в России  
+7 (495) 641-80-47  
info@techno-xcmg.ru

# 臂架组合方案

## Boom / Jib combinations

Официальный дилер  
спецтехники XCMG в России  
+7 (495) 641-80-47  
info@techno-xcmg.ru

Официальный дилер  
спецтехники XCMG в России  
+7 (495) 641-80-47  
info@techno-xcmg.ru



**主臂**  
Telescopic boom

T : 10.4-34m

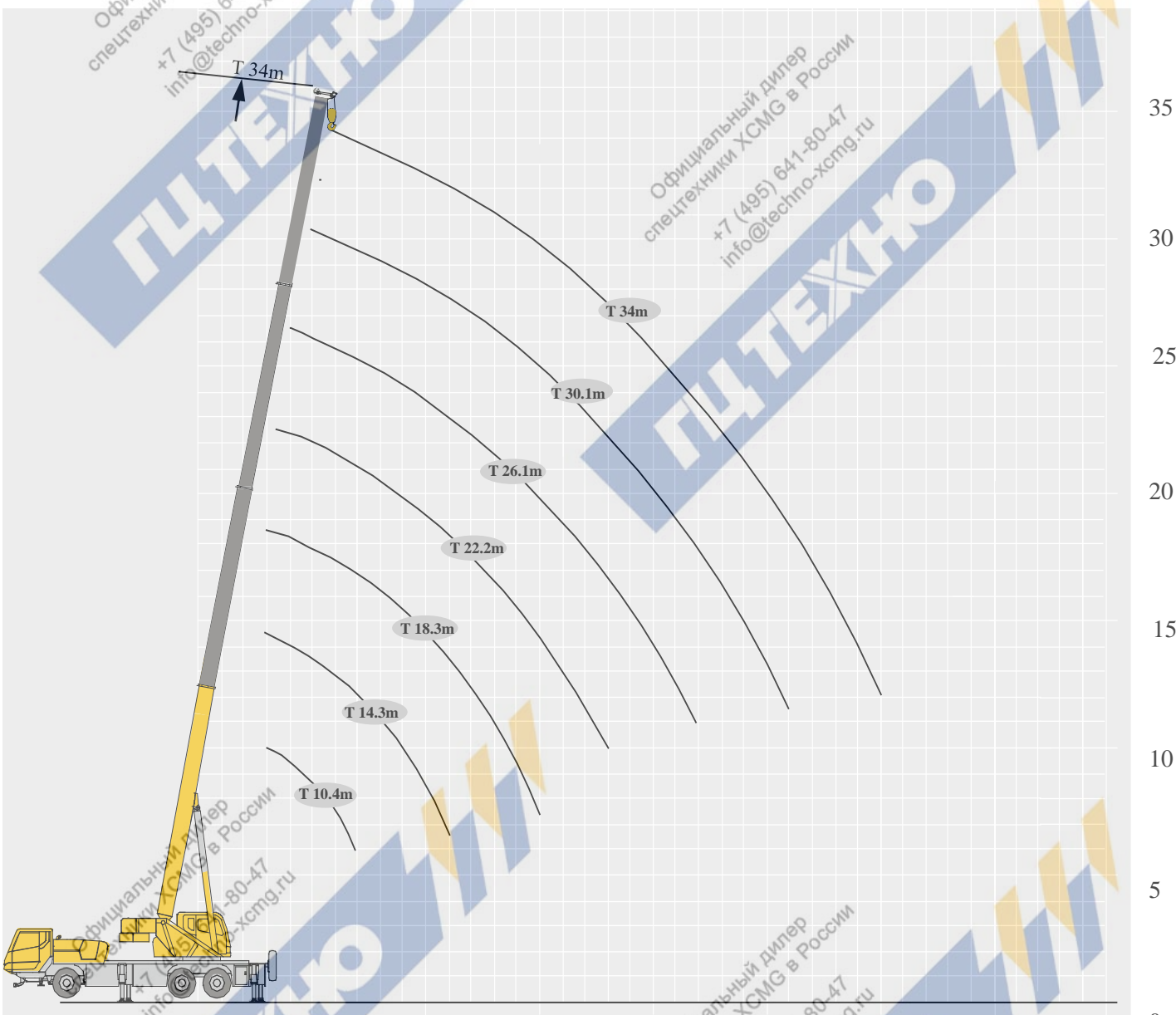
**副臂**  
Jib

T : 34m  
J : 8.3 m



# 起升高度曲线图 Lifting heights

主臂  
Boom



# 起重性能表

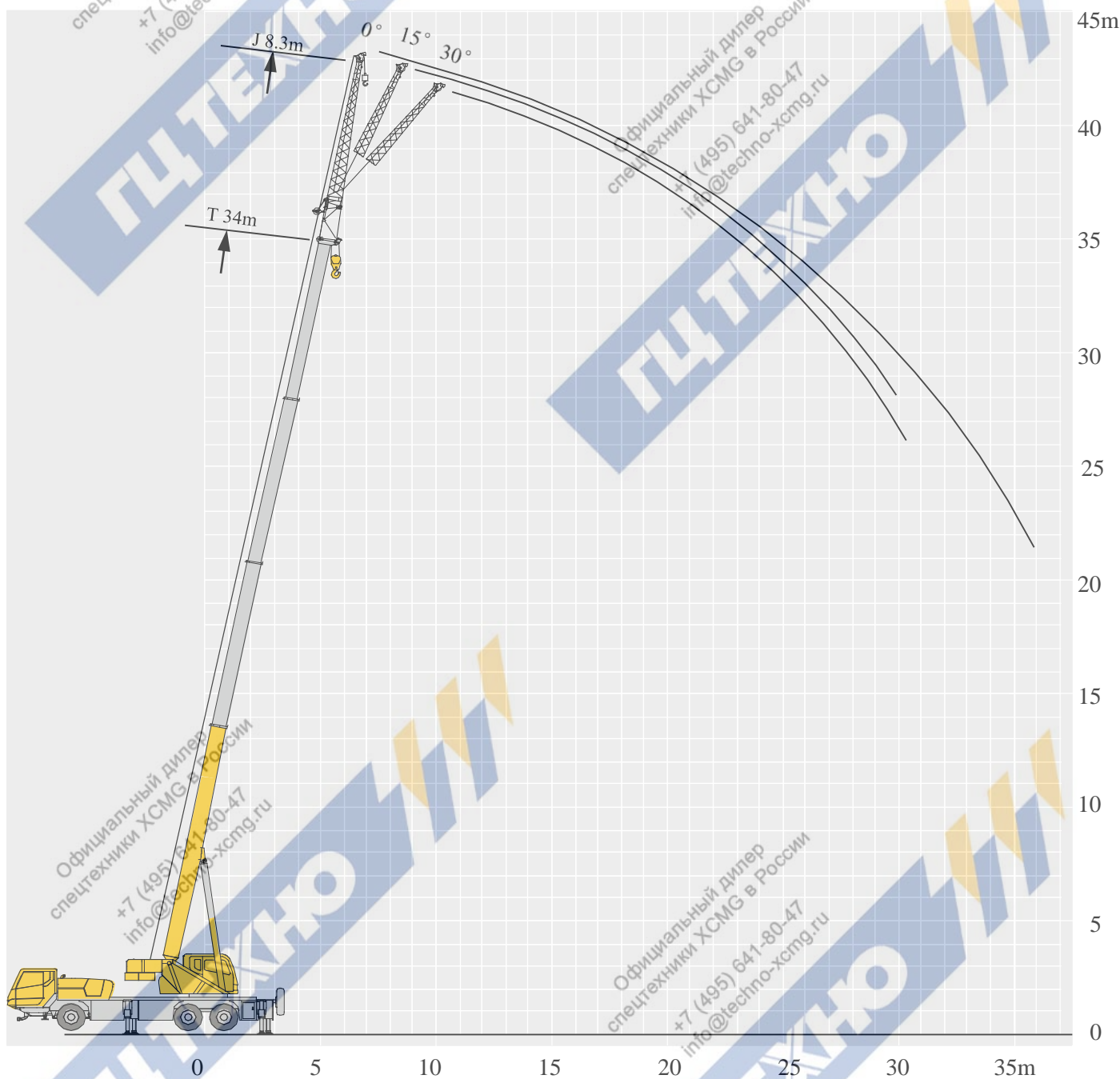
## Lifting capacities

T 10.4~34.0m

	10.4m	14.3 m	18.3m	22.2m	26.1 m	30.1 m	34.0m	
3	25000	17000	16000					3
3.5	25000	17000	16000	15000				3.5
4	23200	17000	16000	15000	12000			4
4.5	21800	17000	16000	14300	11600			4.5
5	19000	17000	16000	13600	11100	9000		5
5.5	17600	16000	15800	13100	10600	8700		5.5
6	16900	15600	15600	12500	10200	8500	6800	6
7	13900	14300	14400	11500	9500	8000	6700	7
8		11400	11600	10700	8700	7400	6300	8
9		9400	9500	9600	8000	6700	5900	9
10		7900	8100	8100	7400	6100	5500	10
11		6800	6900	7000	6800	5700	5100	11
12			6000	6100	6100	5300	4700	12
13			5300	5300	5300	4900	4350	13
14			4600	4700	4700	4500	4000	14
15			4100	4200	4200	4200	3750	15
16				3700	3800	3800	3500	16
17				3400	3400	3400	3300	17
18				3000	3000	3000	3000	18
19					2800	2700	2700	19
20					2500	2500	2500	20
21					2300	2300	2200	21
22					2000	2000	2000	22
23						1900	1800	23
24						1700	1700	24
25						1500	1500	25
26						1400	1400	26
27							1200	27
28							1100	28
29							1000	29
30							900	30

# 起升高度曲线图 Lifting heights

副臂  
Jib

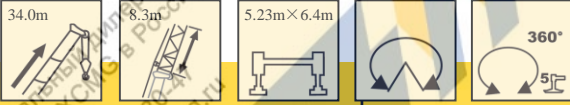




# 起重性能表

## Lifting capacities

T 34.0m



	0°	15°	30°	
78	2800	2000	1600	78
75	2700	1800	1500	75
72	2600	1750	1400	72
70	2450	1600	1350	70
65	2100	1400	1200	65
60	1750	1150	1100	60
55	1300	950	950	55
50	1000	850	750	50
45	750	550	550	45

Официальный дилер  
спецтехники XCMG в России  
+7 (495) 641-80-47  
info@techno-xcmg.ru

Официальный дилер  
спецтехники XCMG в России  
+7 (495) 641-80-47  
info@techno-xcmg.ru

## 注意事项

### Notes

1. 表中额定总起重量值，是在平整的坚固地面上本起重机能够保证的最大总起重量，包括吊钩和吊具的重量，所以为了估算重物重量，必须减去上述的装置重量。
2. 表中的工作幅度为起吊重物离地时起重物到起重机回转轴线的水平距离，是包括起重臂变形量在内的实际值，因而起吊前应考虑起重臂变形量。
3. 只允许在5级(瞬时风速14.1m/s，风压125N/m<sup>2</sup>)风以下进行作业。
4. 吊重前操作者必须对物体的重量和工作范围了解后选择合适的作业工况，严禁超出表中的数值。幅度及臂长在相邻两个数值之间时，应依据两个数值中较小值确定起重作业。
5. 应按主臂仰角范围作业，即使是空载，也不应使主臂仰角处于范围外，谨防整机倾翻。
6. 表中的主臂长度应要按照每节臂的伸缩要求进行伸出。

1. The total rated loads given in the rated load charts are the maximum lifting capacity when the crane is set up on firm and level ground, which includes the weight of the hook block and slings. The weight of above-mentioned devices should be deducted to correctly calculate the load weight.
2. The working radius shown in the rated load charts is the radius when the load is lifted off the ground, and it is the actual value including loaded boom deflection.
3. A lifting operation is permissible only when the wind force is below grade 5 (instantaneous wind speed is 14.1 m/s, wind pressure is 125 N/m<sup>2</sup>).
4. Before beginning lifting operation, the operator should know the weight of the load to be lifted and its working range, and then select proper working conditions. Never operate the crane beyond the limit shown in the chart. Use the lower value from the chart when the boom length or working radius is between the range of values.
5. Observe the boom angle limit. Never operate the crane with the boom angle beyond the recommended limit even if a load is not being carried. Otherwise, the crane will tip.
6. The boom length given in the rated load charts should accord with the telescoping code of boom sections .

Официальный дилер  
спецтехники XCMG в России  
+7 (495) 641-80-47  
info@techno-xcmg.ru

ГЦТЕХНО

Официальный дилер  
спецтехники XCMG в России  
+7 (495) 641-80-47  
info@techno-xcmg.ru






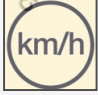





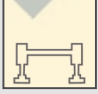





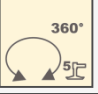

ГЦТЕХНО

# 符号标识

## Description of symbols

### 常规标识

#### General symbols

	上车 Superstructure		底盘 Chassis
	起重能力 lifting capacity		车桥 Axle
	吊臂长度 Boom length		行驶速度 Driving speed
	工作幅度 Radius		爬坡能力 Gradability
	吊臂仰角 Boom position		轮胎 Tires
	主臂起升高度 Hoist height with Boom		支腿 Outriggers
	固定副臂长度 Fixed jib length		吊钩 Hook block
	副臂安装角 Jib offset angle		卷扬 Winch
	副臂起升高度 Hoist height with jib		使用第五支腿360°全回转 360° rotation with 5th jack
			不使用第五支腿侧后方作业 Over side or over rear of the crane



# 主要技术参数表

## Table of Main Technical Parameters

类别 Category	项目 Item	单位 Unit	参数 Parameter			
尺寸参数 Dimensions	外形尺寸 (长×宽×高) Outline size (length×width×height)	mm	11876×2550×3450 (25t状态) 11876×2550×3450 (27t状态) 12325×2550×3450 (28t状态)			
	轴距 Wheel base	mm	4900+1420			
	轮距 (前/后) Track (Front/ Rear)	mm	2073/1838/1838			
	前悬/后悬 Front/ Rear overhang	mm	2441/2034			
	前伸/后伸 Front/ Rear extension	mm	876/654 (28t状态) 863/218 (27t状态) 863/218 (25t状态)			
重量参数 Weight	最大允许总质量	kg	25000	27000	28000	
	轴荷	一轴 1st axle	kg	9000	8600	9000
		二轴 2nd axle	kg	8000	9200	9500
		三轴 3rd axle	kg	8000	9200	9500
动力参数 Power	发动机型号 Engine model	—	SC7H260Q5			
	额定功率/转速 Engine rated power/rpm	kW/(r/min)	192/2300			
	最大净功率/转速 Max. net power/rpm	kW/(r/min)	188/2300			
	最大输出扭矩/转速 Engine rated torque/rpm	N.m/(r/min)	1000/1200-1600			
行驶参数 Travel	最高车速 Max. travel speed	km/h	≥80			
	最低稳定车速 Min. travel speed	km/h	3			
	最小转弯直径 Min. turning diameter	m	≤23			
	臂头最小转弯直径 Min. turning diameter at boom tip	m	≤25			
	最小离地间隙 Min. ground clearance	mm	248.5			
	接近角 Approach angle	°	18.5/10.5(带前防护)			
	离去角 Departure angle	°	17			
	制动距离 (制动初速度为30km/h) Braking distance (at 30 km/h)	m	≤10			
	最大爬坡能力 Max. grade ability	%	≥45			
	百公里油耗 Fuel consumption per 100 km	L	30			
噪音 Noise	加速行驶机外噪声 Exterior noise level	dB(A)	≤88			
	驾驶员耳旁噪声 Noise level at seated position	dB(A)	≤90			

# 主要技术参数表

## Transportation plan

类别 Category	项目 Item		单位 Unit	参数 Parameter	
主要性能参数 Main performance	最大额定总起重量 Max. total rated lifting capacity		t	25	
	最小额定工作幅度 Min. rated working radius		m	3	
	转台尾部回转半径 Turning radius at turntable tail	平衡重处 Counterweight	mm	3440	
		副卷处 Auxiliary winch	mm	3890	
	最大起重力矩 Max. load moment	基本臂 Base boom	kN.m	961	
		最长主臂 Fully-extended boom	kN.m	554	
		最长主臂+副臂 Fully-extended boom + Jib	kN.m	362	
	支腿跨距 Outrigger span	纵向 Longitudinal	m	5.23	
		横向 Lateral	m	6.4	
	起升高度 Hoist height	基本臂 Base boom	m	10.2	
		最长主臂 Fully-extended boom	m	34.1	
		最长主臂+副臂 Fully-extended boom + Jib	m	41.9	
	起重臂长度 Boom length	基本臂 Base boom	m	10.4	
		最长主臂 Fully-extended boom	m	34.0	
		最长主臂+副臂 Fully-extended boom + Jib	m	42.3	
副臂安装角 Jib offset angle		°	0、15、30		
工作速度参数 Working speed	起重臂起臂时间 Boom raising time		s	≤35	
	起重臂全伸时间 Boom fully extended time		s	≤55	
	最大回转速度 Max. slewing speed		r/min	≥2.5	
	支腿收放时间 Outrigger extending and retracting time	水平支腿 Outrigger beam	收 Retracting	s	≤20
			放 Extending	s	≤25
	垂直支腿 Outrigger jack	收 Retracting	s	≤20	
		放 Extending	s	≤25	
起升速度 (单绳,第四层,空载) Hoisting speed (single line, 4th layer, no load)	主起升机构 Main winch	m/min	≥125		
	副起升机构 Auxiliary winch	m/min	≥125		
噪声 Noise	机外辐射 Exterior noise level		dB ( A )	≤122	
	司机位置处 Noise level at seated position		dB ( A )	≤90	