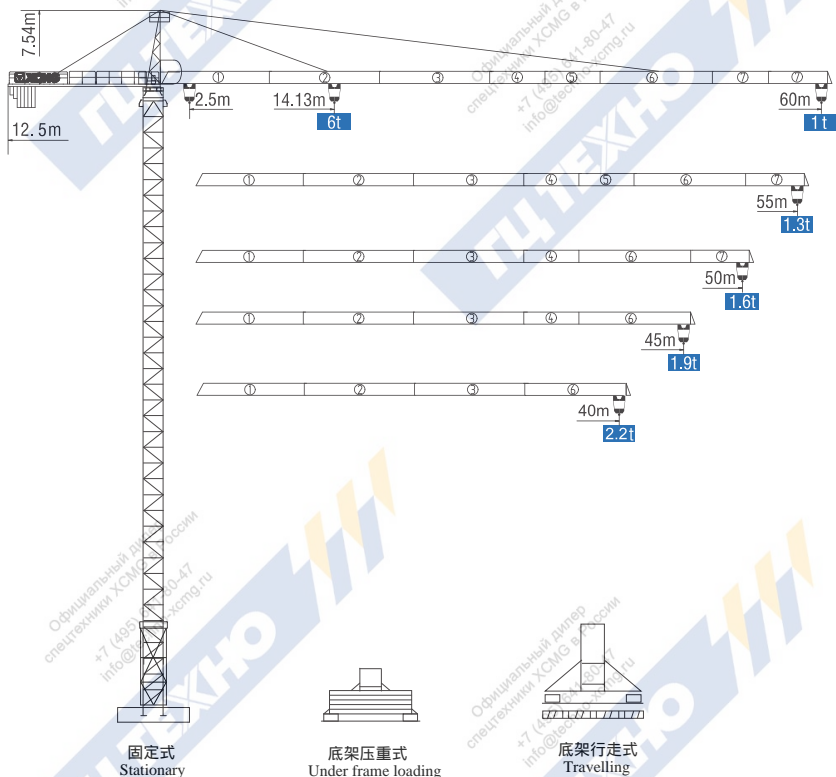


# QTZ80A(6010Fz-6)

## 外形尺寸 DIMENSIONS



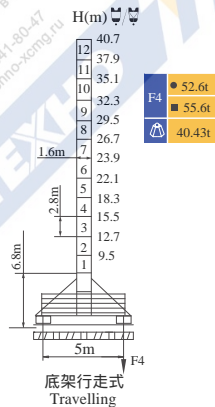
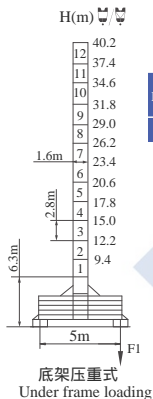
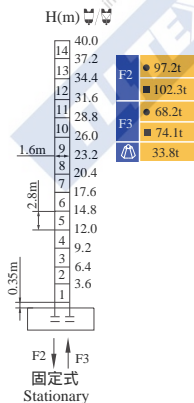
★ 可变换的其他安装方式同我们协商

Mounting possibilities Consult us

塔顶系列 Topkit

# QTZ80A(6010Fz-6)

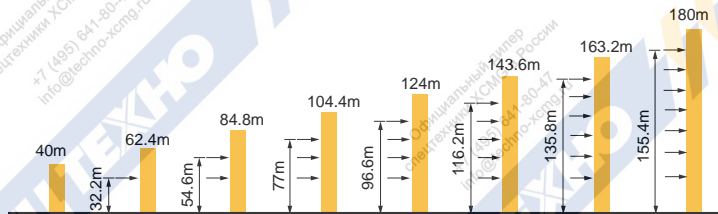
## 技术状态 STATUS



H 吊钩高度 Height of the hook ● 工作状态 In service ■ 非工作状态 Out of service

⚠ 不含平衡重最大臂长最大工作高度时的自重 Without load and ballast with longest jib and maximum height

## 附着 ANCHORAGES



\* 如需达到更高的高度, 请与我们联系! For greater heights, consult us!

# QTZ80A(6010Fz-6)

## 起重特性 LOAD DIAGRAMS

起重臂 (m) jib	R <sub>min</sub>	R (C <sub>max</sub> )	C <sub>max</sub>	幅度 (m) Range							
				15	25	35	40	45	50	55	60
60m		2.5	25.91	3t							
		2.5	13.89	6t	3000	2109.8	1776.9	1517.9	1310.7	1141.2	1000
55m		2.5	28.44	3t							
		2.5	15.25	6t	6000	3477.4	2294.8	1937.2	1659	1436.5	1254.5
50m		2.5	30.12	3t							
		2.5	16.15	6t	6000	3675	2463.3	2084.6	1790.1	1554.5	
45m		2.5	30.12	3t							
		2.5	16.59	6t	6000	3790.9	2546.1	2157	1854.5		
40m		2.5	30.12	3t							
		2.5	16.59	6t	6000	3790.9	2546.1	2157			





★ 其他起重性能需求，请与我们联系！ Any other lifting capacity, consult us!

## 配重配置 BALLAST

Counter-jib ballast		3000(kg) / 2000(kg) / 1300(kg)			
			PZ3000	PZ2000	PZ1300
60m	12.5m	16600	4	1	2
55m	12.5m	15300	4	1	1
50m	12.5m	13300	4	0	1
45m	12.5m	12000	4	0	0
40m	12.5m	10300	3	0	1

# QTZ80A(6010Fz-6)

## 传动机构 Mechanisms

机构 Mechanisms	图例 Example	机构代号 Model	速度(m/min) Speed	起重量(t) Hoist Weight	容绳量 Rope Capacity	功率(kW) Power	
起升 Hoisting	▲ ● ▼	24QT15T		8.5	2	400m >400m*	24/24/5.4
				40	3		
				80	1.5		
				4.2	6		
				20	6		
				40	3		
变幅 Trolleying	◀▶	33BDZ60	50/25m/min		3.3/2.2		
回转 Slewing		37HR100	0~0.6r/min		2×3.7		
行走 Travelling		RT	0~24 m/min		2×5.2		
电源 Main Supply				~380V (±10%) 50Hz			
总功率 (不含顶升和行走) Gross Power (Excluding climbing and travelling)				34.7kW			

Официальный дилер  
спецтехники XCMG в России  
+7 (495) 641-80-47  
info@techno-xcmg.ru

Официальный дилер  
спецтехники XCMG в России  
+7 (495) 641-80-47  
info@techno-xcmg.ru

★ 请与我们联系 Consult us, Please!

此样本所列技术参数不受法律约束, 具体请详见相应产品说明书

These specifications and data are not legally binding. For any technical information, please refer to corresponding instructions.

V. 2017-11A1