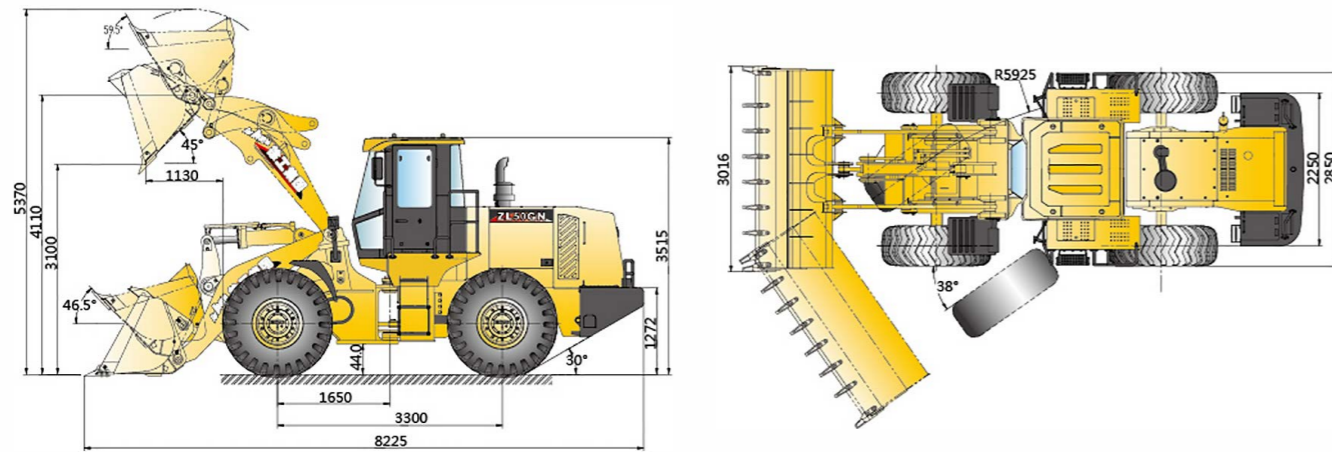


Outline Dimensions



Main Specifications

Description	Specification	Unit
Rated load	5000	kg
Bucket capacity	2.5~5.0	m ³
Machine weight	17500±300	kg
Discharge height	3100~3720	mm
Discharge distance	1130~1220	mm
Wheel base	3300	mm
Tread	2250	mm
Max.breakout force	170±5	kN
Max.horse power	165±5	kN
Hydraulic cycle time-raise	< 6	s
Total hydraulic cycle time	< 11	s
Min circle radius over outside bucket	6910	mm
Min. turning radius over tyres	5925	mm
Articulation angle	38	°
Gradeability	30	°
Tyre size	23.5-25	
Overall machine dimension L×W×H	8225×3016×3515	mm
Model	WD10G220E23	
Rated Power/Speed	162/2000	kW/rpm
Travel speed	I-gear(F/R)	11.5/16.5
	II-gear(F)	38

No further information of sample contents, product structure and configuration parameters updates.
There maybe some difference between sample books and material objects.Please kind prevail.

www.xcmg.com

XCMG Regional Departments:

Europe	(+86-516) 87739238 87739271 87739228	Central Asia	(+86-516) 87739218 87739239 87739510
West Asia & North Africa	(+86-516) 87739251 87739202 87739223	North America	(+86-516) 87739285 87739551 87739713
Asia-Pacific	(+86-516) 87739500 87739529 87739233	South America	(+86-516) 87739196 87739714 87739187
Africa	(+86-516) 87739501 87739222 87739709		

XUZHOU CONSTRUCTION MACHINERY GROUP IMP. & EXP. CO., LTD

Add: No.1, Tuolanshan Road, Xuzhou Economic Developing Zone, Jiangsu, China 221004

Fax: (+86-516) 87739230

E-mail: export@xcmg.com

XCMG
FOR YOUR SUCCESS

ZL50GN

WHEEL LOADER



ZL50GN

Product Overview

- ZL50GN wheel loader is developed and designed on the basis of high performance loader ZL50G that is sufficiently proved by the market for 15 years. While inheriting the original high carrying capacity and reliability characteristics of the ZL50G, the ZL50GN features more beautiful modeling, more comfortable operations, higher working efficiency, and easier maintenances and is the first-choice model for various heavy-load conditions.

Model Characteristics

- It's equipped with XCMG unique heavy-load energy-saving drive system.
- It's equipped with XCMG unique super-strong heavy-load structural.
- With ultra-long wheelbase and ultra-high dead weight, the working stability is leading the industry.
- The centering design of main hinge joints reduces the turning radius and lowers the tire wear and energy consumption.
- It's equipped with industry's exclusive rigid/flexible double steering limit system.
- The hydraulic system adopts double-pump convergence technology to realize fast digging action, high working efficiency, and high energy-saving and environmental-friendliness.
- The pilot control is adopted for the steering and working devices and the lifting limit function of boom and the automatic leveling function of bucket are provided to ensure convenient and comfortable operations.
- The standard slightly pressurized cab with air conditioning system features large space, broad visual field, good sealing performance, low vibration and low noise.
- The complete optional attachments are applicable to the working needs under different conditions.
- The optional all-wire radial tires feature higher reliability.

Performance advantages

- The $\geq 16.5\text{t}$ traction force and $\geq 3.7\text{m}$ high dumping capacity handle the severe conditions with ease.
- $\geq 7\text{t}$ lifting capacity and $\geq 17\text{t}$ breakout force handle all kinds of materials with ease.

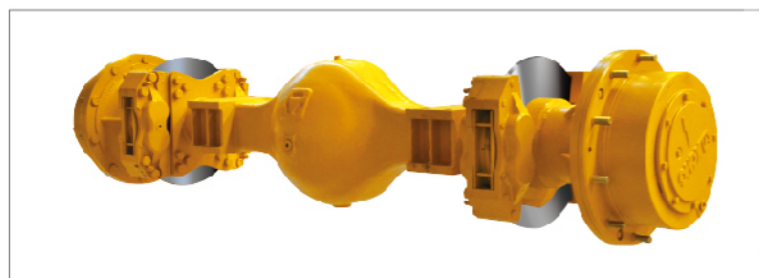


ZL50GN

Heavy-Duty Design Ensures High Firmness and Reliability

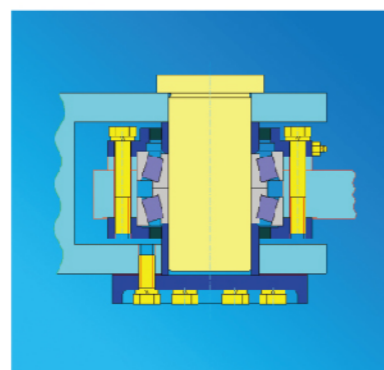
Drive parts of outstanding performances

- The inline, water-cooled, four-stroke, 6-cylinder, direct injection, turbocharged engine equipped features high torque reserve and is elaborately designed especially for working conditions of construction machinery.
- The standard dust filter prolongs the service life of filter element, improves the filtration accuracy, reduces the wear of engine, and extends the service life of engine.
- The wheel reducer for the enhanced drive axle adopts integral gear ring structure to improve the load carrying capacity of axle and meet the needs under all kinds of severe conditions.
- The front drive axle adopts three-section heavy-duty drive shaft to greatly improve the carrying capacity.



Long-tested super-strong heavy-duty structural

- The heavy-duty design, thick plate structure, and robot welding for the frame ensure secure welds, high torsion resistance efficiency, and strong overload capacity. The finite element analysis technology is adopted to reduce the stress concentration and eliminate the partial weaknesses so that the frame is resistant against impact and overload and handles with ease all kinds of overload conditions.
- Two groups of double-row tapered roller bearings are adopted for the main hinge joints, featuring high carrying capacity and long service life.

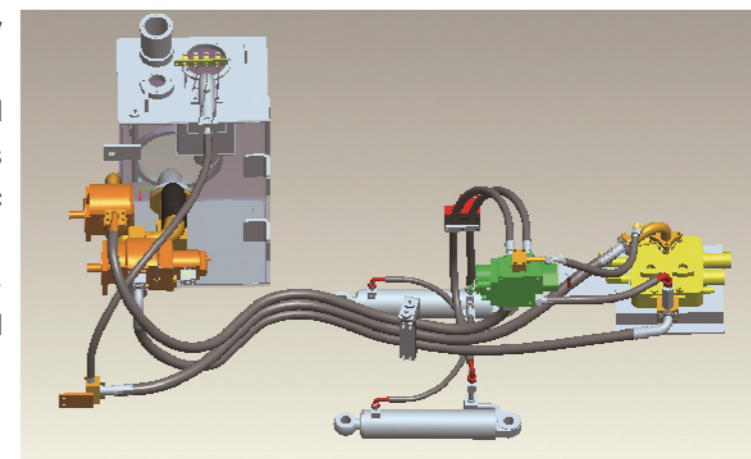


High strength working device

- The innovated lubricating mode for shaft sleeves and hinges and the oil groove lubricated shaft sleeves effectively improve the reliability and service life of hinges.
- The bucket is completely made of high strength steel plates to improve the wear and impact resistance by more than 30%. The robot welding is adopted to guarantee the quality and prolong the service life for each weld.
- The rock type bucket (2.5m³) is made of international brand high strength wear-resistant plates, with the reliability leading the industry.

International quality hydraulic and electric units

- The international brand pumps and valves provide stronger hydraulic power to the overall machine.
- The hydraulic hoses of international renowned brands are adopted to ensure high pressure resistance, long service life, and up to -40°C cold resistance.
- The hydraulic pipelines adopt double sealing means (DIN standard 24 taper thread + O-ring) to achieve better sealing performance and effectively solve the leakage problem.
- All hydraulic tubes are made of high density tubes, featuring better reliability.
- The layout pipelines and circuits are optimized to prevent the unnecessary wear of pipelines and circuits and ensure the reliability of electric circuits and hydraulic pipelines.
- The harnesses are made of international quality material and the process layout is optimized to ensure reliable electric circuit system.



Safe and reliable brake system

- The service brake adopts air-assisted caliper four-wheel brake system to play the powerful braking force and at the same time relieve the load for each brake piston and improve the durability.
- The service brake is equipped with power cutoff function controlled by travel of foot brake valve to improve the braking effect and reduce the impact on drive parts.
- The pneumatically controlled handbrake with power cutoff function and low pressure protection function ensure higher operation safety.

ZL50GN

Environment-Friendliness, Energy-Saving, and High Efficiency



High efficiency drive system

- The XCMG proprietary energy-saving high-efficiency drive system realizes the perfect matching between engine and transmission to achieve maximum utilization of engine power and, while promoting the working efficiency, greatly lower the fuel consumption.

High efficiency hydraulic system

- The double-pump convergence technology of the hydraulic system achieves outstanding fuel-saving effect for the overall machine.

High efficiency working device

- The optimized design of working device hinge joints reduces the pressure of hydraulic system, improves the reliability of hydraulic system, and lowers the power of hydraulic system while guaranteeing the leading performances of the machine.

Short working cycle

- ZL50GN adopts the constant wheel base design to realize lower turning radius, <11s total cycle time, higher operating efficiency, and lower operating cost.

ZL50GN

Human-Oriented and High Comfort and Safety

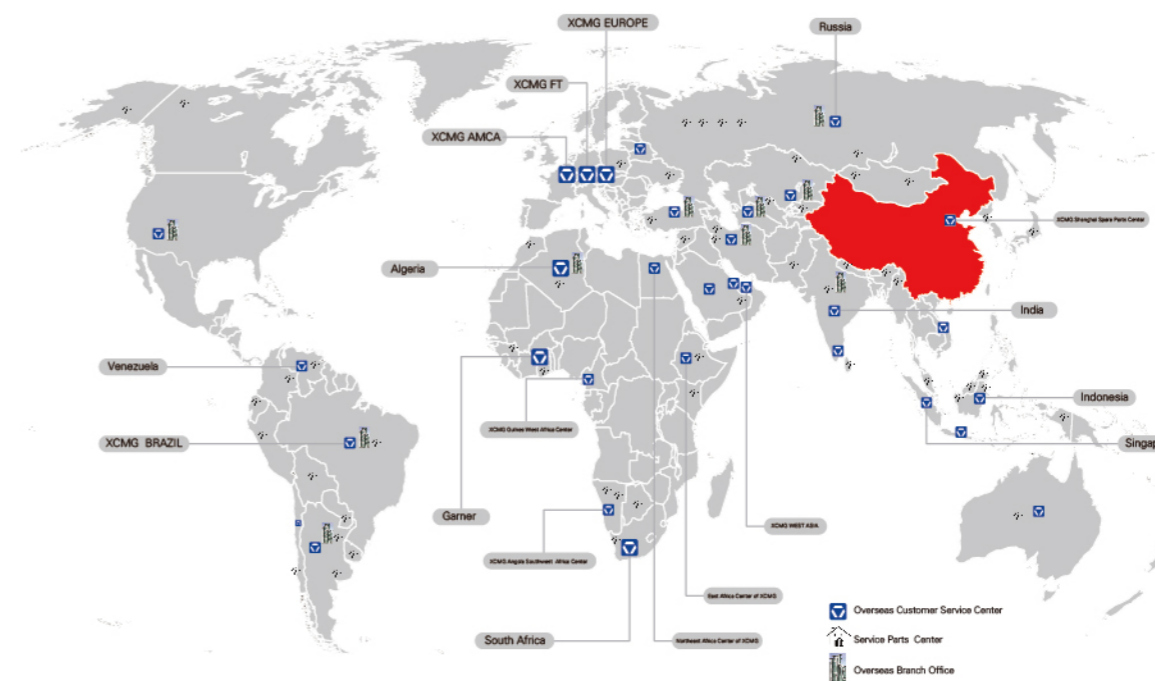
- The super-spacious luxury cab features large space and good visual field and is equipped with standard MP3 player, AM/FM radio, luxury sound system, and adjustable steering gear to meet the operating habits and needs of operators in different body sizes.
- The pilot control is adopted for the steering and working devices and the lifting limit function of boom and the automatic leveling function of bucket are provided to ensure convenient and comfortable operations.
- The panorama rear windscreen with rear wiper and the reversing alarm equipped ensure good visual field and safe reversing.
- The adoption of in-depth sound insulation and shock absorption measures greatly reduces the internal noise of cab during working of machine to provide a quiet operating environment for the driver.
- All-new digital VDO combination instrument features high beauty and elegance and provides car-level driving pleasure.
- The standard slightly pressurized cab with air conditioning system guarantees the air quality within the cab to the maximum extent.
- The arrangement of ladders and handrails conforms to EU standard (CE standard) and the anti-skid perforation measure is adopted for the operation board.
- The optional FOPS&ROPS cab is at your choice.



Timely Services and Powerful Guarantee

Guarantee of continuously high-efficiency running

- The implementation of "full-life cycle services" ensures the trouble-free throughout full life cycle.
- The worldwide marketing service network features extensive coverage.



Convenient Maintenances

- The new framework structure engine hood and the uplift large side doors boast large opening angle and make the checking, repair, and maintenance easier for the engine and radiator.
- The system pressure checking ports are concentrated to save the maintenance time and labor.
- The centralized fuse case centrally indicates the running status of electric system and eases the maintenance.
- The split brake calipers realize convenient daily maintenances.
- The metallic sintered dust-proof breather features high firmness and reliability and easy maintenance.
- The independent chamber design for oil return line of hydraulic oil tank guarantees the convenient maintenances.
- The optional central lubrication system simplifies the daily maintenances of the users.



