



**XGP40-90  
PIPELAYER**



## Product Description

# XGP70

■ Cummins NTA855-C360 239kW/325hp ■ Max lifting capacity 70000 kg /154000lb ■ Operating weight 49000 kg /107800lb

## MAIN FEATURES

### CABIN

Good visibility to work area and top of the boom with a sky window on the roof, ROPS can be installed as the optional equipment.

### ENGINE

The Cummins, NTA855-C360 direct injection and turbocharged engine gives sustained power and high torque rise that is required for the more tough jobs.

### BOOM

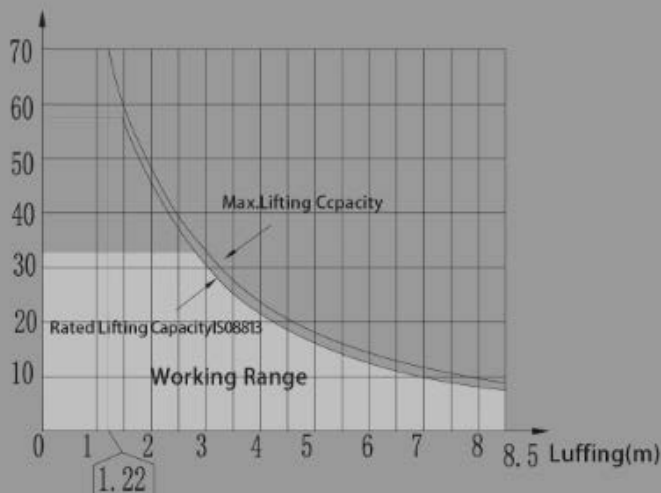
Tubular A-Frame boom engineered for exceptional support at maximum lift capacity and easy detachment.

### CONTROL

Multi-axis, hydraulic joystick allows simultaneous, precise control of the load and booms functions with one hand. Single-lever, hydraulic remote control valves are used for counterweight and two-speed functions. The controls are easy to operate and require minimum operator training.

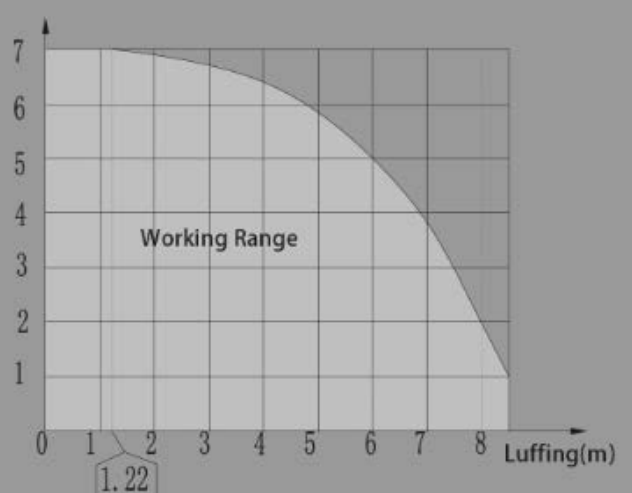


Lifting Capacity(t)



Boom Overhang

Lifting Height(m)



Boom Overhang

## SAFETY DEVICES:

- **Free Fall System**

When the button is engaged, the load free-falls and then immediately stops when the button is released.

- **Automatic Boom Kick-Out**

This system will ensure you will never bend another boom.

- **Anti Two Block**

Sets a minimum distance between the top block and the hook block, preventing collisions between them.

- **Anti Tipping System**

Prevents tipping by calculating the maximum load that can be lifted.

### ENGINE

type	Cummins
Model	NTA855-C360
Rated power	239 kW
Rated speed	2000 rpm
Bore	139.7 mm
Stroke	152.4 mm
Displacement	14.1 l
Design	6-cylinder in-line
Electric system	24 V
Starter	11 kW / 15 hp
Batteries	2 x 195 Ah / 12 V
Cooling system	water and air combi radiator
Water cooled, turbo-charged,	
Air-to-air intercooler	

### SERVICE CAPACITIES

Fuel tank	640 L
Crankcase and filter	47 L
Final drive (each side)	55 L
Cooling system	121 L
Hydraulic tank	450 L
Power train	185 L
Roller frames (each)	0.45 L

### TRANSMISSION

Planetary type gearbox, to be shifted under load, with clutches operating in oil and having high capability of transmitting the torque, providing three forward gears and three reverse ones. As per design, it is connected with a matching reducing gear and the main drive forming a single power unit to be mounted in a rear axle housing.

Three element one-stage torque converter with a pump drive reducing gear, is connected with a gearbox by a spline clutch and is mounted at the front wall of the rear axle. The torque converter is connected with an engine by drive line and an elastic clutch mounted on the engine.

### TRAVEL SPEEDS

Gear	Forward	Reverse
1	3.6km/h	4.4 km/h
2	6.6km/h	7.8 km/h
3	11.3km/h	13.5 km/h

### TRACTION FORCE

1f - drawbar pull	310 kN
2f - drawbar pull	295 kN



## **Advantages**

XCMG is a construction machinery manufacturer with over 70 years of experience. Over the years, we have grown to become the world's most comprehensive construction machinery manufacturer and influential multinational company. In 2015, we rank No.1 in China and No. 5 in global heavy equipment industry.

XCMG's construction machinery covers an astonishing range of equipment, including cranes, earth-moving machinery, road machinery, excavators, concrete machinery, mining machinery, piling machinery, lumber machinery, fire-fighting machinery, heavy trucks, sanitation machinery, agricultural machinery, and more. We have the world's most comprehensive product line, and offer customers complete solutions for construction equipment. Our other businesses include finance, leasing, and remanufacturing.