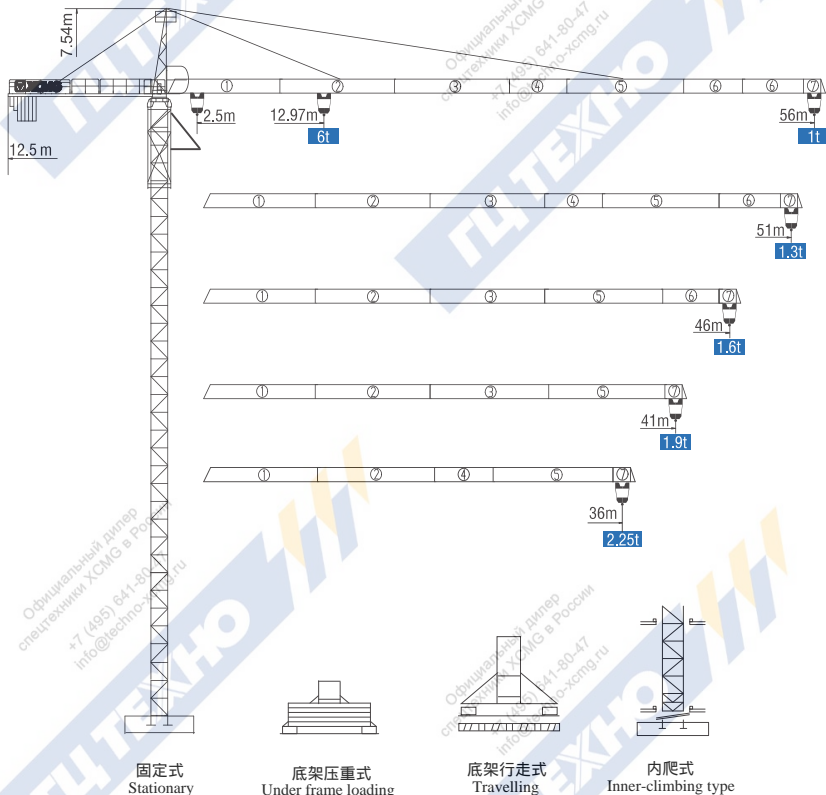


QTZ80(5610Y-6) QTZ80(5610Fz-6)

外形尺寸 DIMENSIONS



* 可变换的其他安装方式同我们协商

Mounting possibilities Consult us

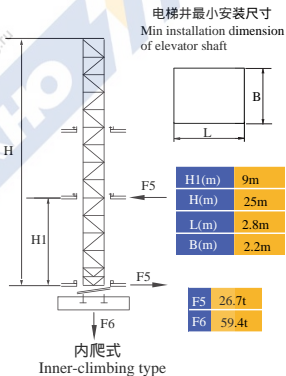
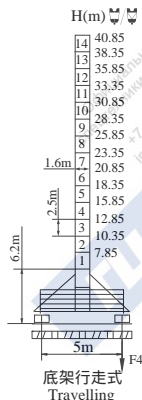
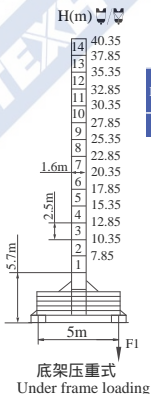
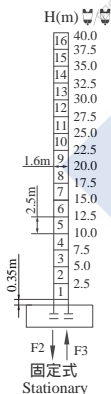
塔顶系列 Topkit

QTZ80(5610Y-6)

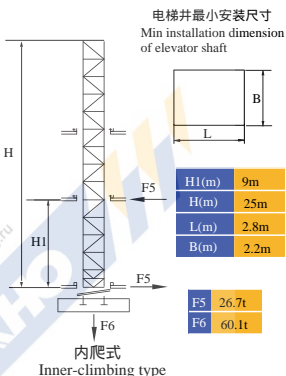
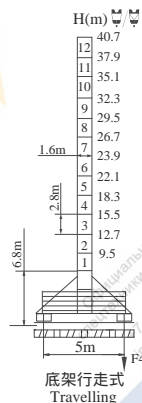
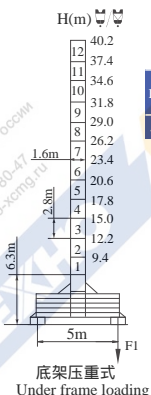
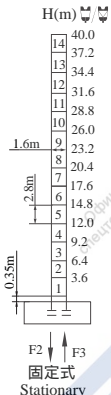
QTZ80(5610Fz-6)

技术状态 STATUS

QTZ80(5610Y-6)



QTZ80(5610Fz-6)



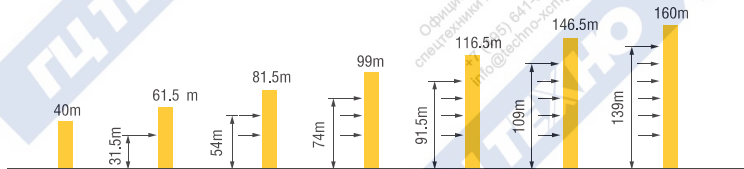
H 吊钩高度 Height of the hook ● 工作状态 In service ■ 非工作状态 Out of service

⚠ 不含平衡重最大臂长最大工作高度时的自重 Without load and ballast with longest jib and maximum height

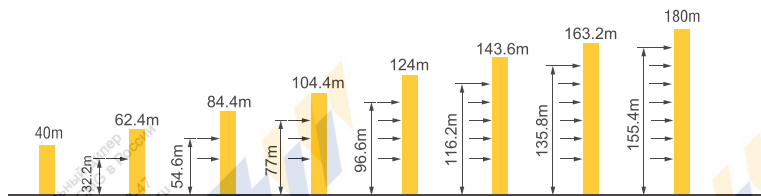
QTZ80(5610Y-6) QTZ80(5610Fz-6)

附着 ANCHORAGES

QTZ80(5610Y-6)



QTZ80(5610Fz-6)













* 如需达到更高的高度，请与我们联系！For greater heights, consult us!

QTZ80(5610Y-6)

QTZ80(5610Fz-6)

起重特性 LOAD DIAGRAMS

起重臂 (m) jib	R _{min}	R (C _{max})	C _{max}	幅度 (m) Range									
				16	21	26	31	36	41	46	51	56	
56m		2.5	24.18	3t	3000		2754	2226	1845	1556	1330	1149	1000
		2.5	12.97	6t	4755	3488	2708	2180	1799	1510	1285	1103	954
51m		2.5	26.37	3t	3000		2474	2058	1744	1497	1300		
		2.5	14.14	6t	5263	3855	3004	2429	2013	1698	1452	1254	
46m		2.5	27.7	3t	3000		2626	2189	1858	1600			
		2.5	14.85	6t	5530	4078	3185	2580	2143	1813	1554		
41m		2.5	28.18	3t	3000		2680	2236	1900				
		2.5	15.11	6t	5636	4159	3250	2635	2190	1854			
36m		2.5	28.33	3t	3000		2695	2250					
		2.5	15.19	6t	5667	4183	3216	2653	2218				

★其他起重性能需求, 请与我们联系! Any other lifting capacity, consult us!

配重配置 BALLAST

Counter-jib ballast		2330 (kg) / 1250 (kg)	
		 (kg)	
56m	12.5m	15230	6 1
51m	12.5m	13980	6 0
46m	12.5m	12900	5 1
41m	12.5m	11650	5 0
36m	12.5m	9320	4 0

QTZ80(5610Y-6)

QTZ80(5610Fz-6)

传动机构 Mechanisms

机构 Mechanisms	图例 Example	机构代号 Model	速度 (m/min) Speed		起重量 (t) Hoist Weight	容量 Rope Capacity	功率 (kW) Power
起升 Hoisting		24QT15T	↑	8.5	3	400m >400m*	24/24/5.4
				40	3		
				80	1.5		
			↓	4.2	6		
				20	6		
				40	3		
变幅 Trolleying		33BDZ60	50/25m/min			3.3/2.2	
回转 Slewing		37HR100	0~0.6r/min			2×3.7	
行走 Travelling		RT	0~24m/min			2×5.2	
电源 Main Supply						~380V (±10%) 50Hz	
总功率 (不含顶升和行走) Gross Power (Excluding climbing and travelling)						34.7kW	

* 请与我们联系 Consult us, Please!

此样本所列技术参数不受法律约束, 具体请详见相应产品说明书

These specifications and data are not legally binding. For any technical information, please refer to corresponding instructions.

V. 2017-11A1