

责任 信义 天下
Responsibility, Credibility, World

徐州徐工筑路机械有限公司

地址：江苏省徐州市经济开发区工业一区
销售处电话：0516-87738058 87738108
传真：0516-87738068
售后服务处：0516-87738101 87738102
传真：0516-87738101
备件处电话：0516-87738105
传真：0516-87738148
邮编：221004

XUZHOU XUGONG ROAD CONSTRUCTION MACHINERY CO., LTD.
Add: No 1 Industry District, Jinshanjiao Developing Zone, Xuzhou, Jiangsu, China
Sales Department: 0516-87738058 87738108
Fax: 0516-87738068
After-Sale Service: 0516-87738101 87738102
Fax: 0516-87738101
Spare Parts Department: 0516-87738105
Fax: 0516-87738148
Postcode: 221004
<http://www.xcmgzl.com>

www.xcmgzl.com

本品随技术进步将不断改进，如有修改，恕不另行通知。样品图片与实物不符的，以实物为准。
With continuous development of technologies, we reserve the right to make changes at any time without notice. If differences between the printed image and the original product exist, the original product should prevail.



徐工徐工 助您成功
XCMG FOR YOUR SUCCESS



GR系列平地机

GR SERIES MOTOR GRADER

 **徐州徐工筑路机械有限公司**
XUZHOU XUGONG ROAD CONSTRUCTION MACHINERY CO.,LTD



高原型平地机

Plateau Series Motor Grader

主要用于公路、机场等大面积的地面平整、挖沟、刮坡、推土、松土、除雪等作业，能满足海拔4500m以下高原地区施工环境。

Mainly utilized in ground leveling, ditches, slope scraping, bulldozing, loosing soil and snow removal operations, showing complete capability to operate under plateau construction environment of 4,500m elevation.

GR215H

性能特点

Performance and characteristic

性能优良动力系统，采用东风康明斯6CTA8.3高原型发动机，具有高可靠性，低噪音，低排放，储备扭矩大，能满足海拔4500m以下高原地区环境施工

ZF电液控制动力换挡箱，操纵灵活方便

三段式美驰驱动桥，带NO-SPIN自动防滑差速器，传动平稳可靠。

安全可靠制动系统，行车制动为全液压双回路制动。

操纵方便的转向系统，采用负荷传感式全液压系统，配合铰接式车架，大转向角前桥，转向灵活。

视野开阔的豪华驾驶室，具有优良的密封性、保温采暖性能、除霜性能、紫外线辐射防护功能。

循环冷却介质加热系统和进气预热系统，保证低温的环境下发动机的正常启动大功率暖风机，电加热座椅，燃油加热器加热系统进行供暖除霜，保持驾驶室内部操作环境的舒适性

先进可靠液压系统，进口多路阀，液压锁。

工作装置采用过载保护蜗轮箱、滚珠转盘回转机构配、缓冲减震系统、铲刀浮动系统以及加强型铲刀，工作可靠寿命长。

外观造型为独特的徐工风格。

The power system is excellent,adopt Cummins 6CTA8.3 plateau type engine which has the performances of high reliability,low-noise,low-emission and enough reserve power,it can works at the altitude of 4500m of the plateau.

ZF electronic and liquid control transmission,easy to operate.

Three portions drive rear axle,with NO-SPIN automatic and skid-proof differential,make transmission calmly and dependably.

Safe and reliable brake system,full hydraulic double circuit brake system is adopted.

Steering system is easy to manipulate,adope load sensing hydraulic system the articulation frame is adopted and matched with the steering of front wheel,with small turning radius,maneuvering and flexible.

The cab is grand and nice,with wide eyeshot and good sealing,good thermal insulation properties,defrosting and UV protection.

The cooling medium heating system and air intake preheating system ensure the engine can be started in the low temperature.

It is comfortable in the cab which has high-power heaters,seat with electric heating function and heating and defrosting system.

Adopt Import multi-way valve and hydraulic lock,the hydraulic system is reliable.

Working device adopts worm wheel case with overload protection,slewing ring,vibration reducing system and blade floating system.The Strengthen structure of the blade has long working life.

Appearance with a unique style of XCMG



全液压型平地机

All Hydraulic Motor Grader

主要用于公路、机场等大面积的地面平整和挖沟、刮坡、推土、松土、除雪等作业。全液压平地机行驶驱动、作业装置、转向和制动系统全部采用液压传动，可根据工况来选择自动换档或手动换档、自动或手动作业模式。

Mainly utilized in ground leveling, ditches, slope scraping, bulldozing, loosening soil and snow removal operations. The hydraulic transmission is adopted in the travel drive, operating device, steering and braking system of full hydraulic grader, which is adjustable to automatic or manual shift, automatic or manual operation mode based upon actual conditions.

GH215

性能特点

Performance and characteristic

行驶驱动：采用静液压传动，两档变速箱切换高低速，宽广的变速范围满足大牵引力作业和高速行驶的要求。

电气系统：采用工程机械专用的PLC控制器，可实现档位控制、发动机过载保护、状态监控与故障提示。

H型换挡操纵手柄：档位控制先进灵活方便，可选择手动挡、自动挡、典型作业模式。

可选装：单手柄操作系统，徐工独创，操作简单方便，操纵舒适性好，驾驶员劳动强度低。

液压系统：双回路行车制动；负荷传感全液压转向；作业系统。ROPS&FOPS驾驶室，装备电动洗窗和除雾装置，冷暖两用空调，自动通风换气。

Traveling drive: Adopt static hydraulic driven method and two gears gearbox shift high/low speed. The speed change range is so wide that satisfies the demand of big haulage and drive on high speed.

Electric system: Adopt PLC controller which is special used to the construction machinery. It can realize gear control, overload protection for engine, state supervision and trouble indication.

H form shift operating handle: The gear control is flexible and convenient. You can manual mold, automatic mold or typical work mold.

Optional arrangement: Single handle operating system, which is original created by XCMG. The operation is simple, convenient and comfort. The intensity of labor of the driver is very low.

Hydraulic system: Double circuit break. Load sensing hydraulic turn. Blade is operated by hydraulic system.

ROPS&FOPS cab with electric washing window equipment/clear fog equipment and air-conditioning of refrigerating and warm, automatic ventilation.



CE认证系列平地机 CE Series Motor Grader

主要用于公路、机场等大面积的地面平整和挖沟、刮坡、推土、松土、除雪等作业。全液压平地机行驶驱动、作业装置、转向和制动系统全部采用液压传动，可根据工况来选择自动换档或手动换档、自动或手动作业模式。

Mainly utilized in ground leveling, ditches, slope scraping, bulldozing, loosening soil and snow removal operations. The hydraulic transmission is adopted in the travel drive, operating device, steering and braking system of full hydraulic grader, which is adjustable to automatic or manual shift, automatic or manual operation mode based upon actual conditions.

GR135C/GR165C/GR180C GR215C/GR215AVI

性能特点 Performance and characteristic

进口CUMMINS电喷柴油发动机(Tier3)，低噪音，低排放。

电液控制动力换挡箱，符合人机工程的操纵手柄及按钮，操纵力小，操纵灵活方便。

三段式驱动后桥，带NO-SPIN自动防滑差速器，传动平稳可靠。普通或ROPS&FOPS驾驶室，装备电动洗窗和除雾装置，冷暖两用空调，自动通风换气。

行车制动系统采用双回路液压制动系统，确保行车制动安全可靠。工作铲刀带浮动保护功能，缓冲铲刀冲击。负荷传感、转向优先节能型全液压系统，配合单油缸大转向角前桥，铰接转向车架，使整机转向机动灵活，转弯半径小。

整机通过CE认证，符合欧洲安全环保要求。

可选装部件：前推土板、前松土耙、后松土器、自动找平系统。

CUMMINS diesel engine(Tier3), low noise, low emission.

Electronic-hydraulic control power shift box is used. The control crank and button is in accord with ergonomics. The operating is flexible and convenient, and needs low force.

The rear axle is of three-stage driving axle equipped with No-Spin differential locking device. The driving is steadily and reliable.

Normal or ROPS&FOPS cab equips electric screen wiper and mist eliminator, and cold and warm air-conditioner.

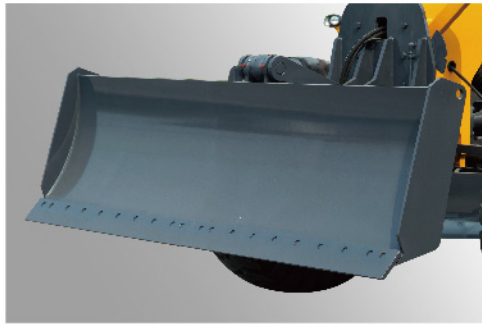
Braking System uses dual-circuit hydraulic braking system to make sure the braking safety and reliable.

The blade has the function of floating protection to buffer the impact. The fully hydraulic system which is energy-saving and has load transmit and turning priority, cooperating with the front axle with single cylinder and large turning angle, articulated frame, with front-wheel steering, ensuring small turning radius and more maneuverability.

The integrated equipment passes the CE authentication and accords with the Europe safety and environment protection requirement.

Optional equipment: Front Dozer Blade, Front Scarifier, Rear Scarifier, Automatic position system.

选装件 Optional parts



前推土板

装在地平机前桥前面的一铲刀，用于向前铲、推铲刀无法接近的边角狭小地区的施工，以及进行厂拌物料的路面摊铺。可以实现铲刀浮动功能可使铲刀沿路面浮动，其路面适应性能更加优越，并可用于道路除雪。

Front Dozer

A blade installed at front of steering axle of grader is utilized to shovel and push forward small and narrow corners which are inaccessible for blade. It can also be applied to road pavement of mixed materials, realizing function of floating so as to make the blade float along the road with much superior road surface adaptability and purpose of snow removal.

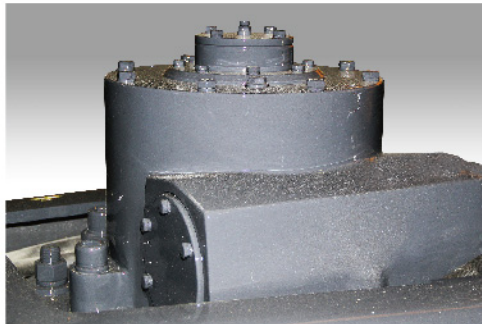


后松器

装在地平机后端的多齿机构，用于挖掘用铲刀不能挖的硬质地面，拉松不合格的压层以便重新施工等作业。

Rear ripper

A multi-tooth mechanism installed in the back of grader, used to excavate the hard ground which can not did by blade and loose poor compacted formation to re-construct, etc.



过载保护蜗轮箱

增加安全卸载装置及中间输出轴能够得到双端支撑，因此地平机正常工作时，蜗轮与中间输出轴实现刚性连接，力矩能有效的通过蜗轮传到中间输出轴上，保证其使用性能。超载时打滑，起到保护作用

Overloaded protection for worm box

As unloading device and the intermediate output axis can get the double end support, the worm wheel and the output shaft in middle can realize rigid connection when grader is in normal condition. Torque can be effectively transferred through the worm gear to the intermediate output shaft and safeguarding its performance. Overload slip also plays a protecting role.



回转支撑

滚珠转盘回转机构配过载保护蜗轮箱工作可延长设备使用寿命。

Rotary Support

The service life of ball-turned table gyratory device, equipped with worm-gear case, can be extended.



自动找平系统

可实现地平机的操作自动化，平整精度高、节约材料、减轻操作手的工作强度，并可提高工作效率。

Automatic leveling device

Showing automatic leveling system, high leveling precision, saving materials and reducing working intensity of machine operators of the graders and improving work efficiency.

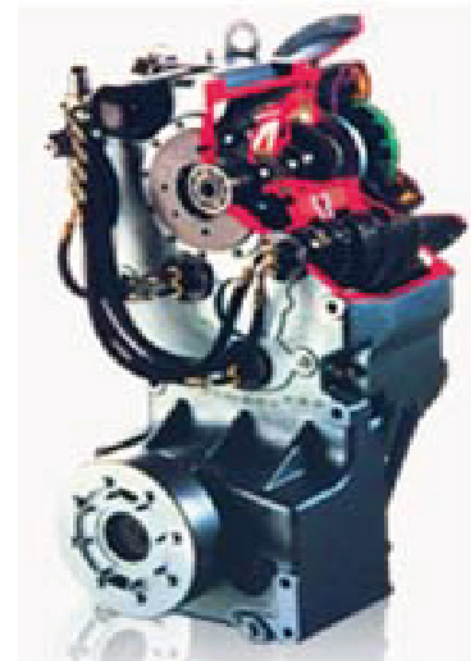


防翻滚驾驶室

防翻滚驾驶室结构更加稳定，安全性高。

ROPS&FOPS cab's structure

ROPS&FOPS cab's structure is More stable, and security



ZF箱

ZF箱中德合资生产，性能稳定，可靠性高，适用各种复杂工况。

ZF Box

The ZF Box, manufactured by joint efforts from China and Germany, shows steady performance, high reliability and is capable of various sophisticated conditions.

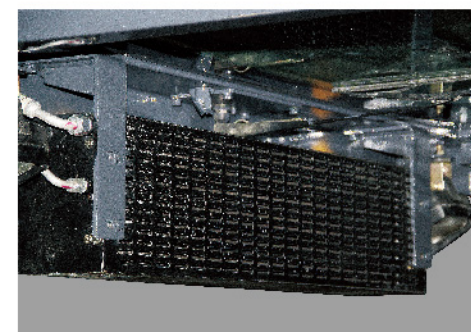


暖风机

暖风机在冬季可以有效改善驾驶室内温度，提高驾驶舒适性

Fan Heater

Fan heater can effectively improve the driving the indoor temperature in winter, improve the driving comfort.



冷暖两用空调

冷暖空调可以有效改善驾驶室操作环境，提高驾驶舒适性。

Cold and warm air conditioning

Cold and warm air conditioning can effectively improve the cab operation environment, enhance the driving comfort.



GR系列平地机 GR SERIES MOTOR GRADER

**GR100\GR135\GR165\GR180\GR200
GR215\GR230\GR260\GR300
GR215A\GH215**

GR系列平地机主要用于公路、机场、农田等大面积的地面平整和挖沟、刮坡、推土、松土、除雪等作业。是国防工程、矿山建设、城乡道路等建筑施工和水利建设、农田改良等所必须的工程机械。

The XCMG GR Series Motor graders are primarily committed to operations as ground leveling, trenching, cutting surface, dozing, soil loosening and snow plowing of roads, airports, farmlands and others. They are the exclusive and needful construction machinery for national defense engineering, mine construction, building of town and country roads, water conservancy construction, farmland improvement and etc.



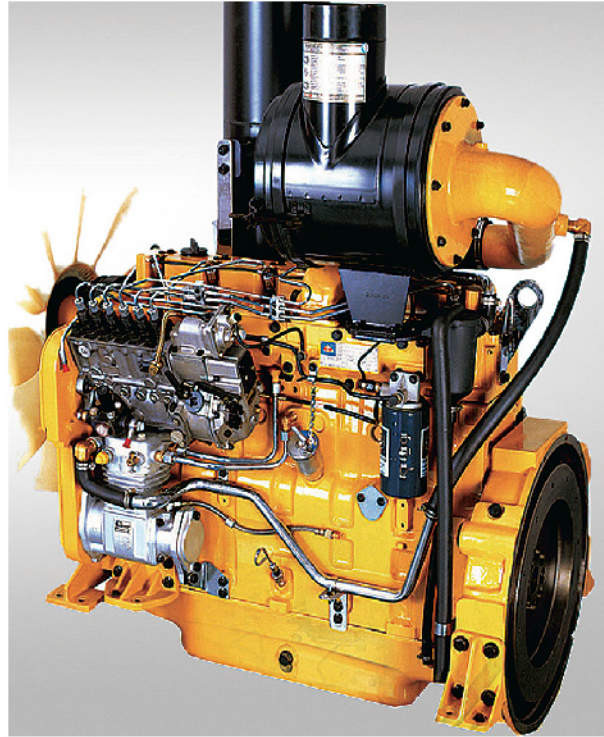
主要技术参数

Main Technical Specifications

型号 Model		GR100	GR135	GR165	GR180	GR200	GR215	GR230
发动机 Engine	厂家	东风康明斯	东风康明斯	东风康明斯/上柴	进口康明斯/上柴	上柴	进口康明斯/东风康明斯	东风康明斯
	发动机型号 Engine model	4BT3.9	6BTA5.9	6BTA5.9/SC8D170G2B1	CTAA8.3/SC8D190G2B1	SC8D200G2B1	CTAA8.3/6CTA8.3	6CTA8.3-C230
	额定功率/转速 Rated power/speed	KW/rpm	74/2200	100/2200	125/2200	138/2200 140/2300	147/2300	153/2200 160/2200
性能参数 Performance specification	前进速度 Traveling speed forward	km/h	5,8,11,17,24,38	5,8,13,20,30,42	5,8,11,19,23,38	5,8,11,19,23,38	5,8,11,19,23,38	5,8,11,19,23,38
	后退速度 Traveling speed reverse	km/h	5,11,24	5,13,30	5,11,23	5,11,23	5,11,23	5,11,23
	牵引力(f=0.8) Tractive force	KN	41.6	61.3	82	84	87	90
	最大爬坡能力 Max.gradeability	%	30	30	30	20	30	30
工作参数 Operating specification	最小转弯半径 Min.turning radius using articulation	m	5.9	6.6	7.3	7.3	7.3	7.3
	最大提升高度 Maximum lift above ground	mm	300	410	450	450	450	450
	最大铲土深度 Maximum depth of cutting	mm	350	515	500	500	500	500
铲刀 Blade	最大侧倾角度 Maximum blade position angle	°	45	90	90	90	90	90
	切削角 Blade cutting angle	°	28~70	54~90	28~70	28~70	28~70	28~70
	回转角 Circle reversing rotation	°	120	360	360	360	360	360
	长度x弦高 Moloboard width x height	mm	3048x450	3710x610	3965x610	3965x610	4270x610	4270x610
	整机外形尺寸 Dimension (LxWxH)	mm	6880x2375x3150	8015x2380x3050	8900x2625x3470	8900x2625x3470	8932x2625x3470	8970x2625x3470
	整机质量 (标配) Operating weight(Standard)	kg	7000	11200	15000	15400	16000	16500

型号 Model		GR260	GR300	GR215A	GR180R	GR215H	GR215LII	GR215
发动机 Engine	厂家	东风康明斯	进口康明斯	进口康明斯/东风康明斯	进口康明斯	东风康明斯	东风康明斯	进口康明斯/东风康明斯
	发动机型号 Engine model	6CTA8.3-C260	QSL9	QSB6.7/6CTA8.3	QSB6.7	6CTA8.3-C215	6CTA8.3-C215	QSB6.7/6CTA8.3
	额定功率/转速 Rated power/speed	KW/rpm	194/2200	224/2100	164/2200 160/2200	142/2050	160/2200	160/2200
性能参数 Performance specification	前进速度 Traveling speed forward	km/h	5,8,11,19,23,38	5,8,11,19,23,40	5,8,13,19,23,38	3,8,6,6,8,7,15,19,32	5,8,11,19,23,38	5,8,11,19,23,38
	后退速度 Traveling speed reverse	km/h	5,11,23	5,11,23	5,11,23	3,8,8.5,18.4	5,11,23	5,11,23
	牵引力(f=0.8) Tractive force	KN	132	143	115.3	80	90	98
	最大爬坡能力 Max.gradeability	%	36	36	36	20	20	30
工作参数 Operating specification	最小转弯半径 Min.turning radius using articulation	m	8.3	8.3	7.3	7.3	7.3	7.3
	最大提升高度 Maximum lift above ground	mm	450	450	450	460	450	450
	最大铲土深度 Maximum depth of cutting	mm	500	500	500	500	500	500
铲刀 Blade	最大侧倾角度 Maximum blade position angle	°	90	90	90	90	90	90
	切削角 Blade cutting angle	°	28~70	28~70	28~70	28~70	28~70	28~70
	回转角 Circle reversing rotation	°	360	360	360	360	360	360
	长度x弦高 Moloboard width x height	mm	4572x787	4877x787	4270x610	3658x610	4270x610	4270x610
	整机外形尺寸 Dimension (LxWxH)	mm	10280x3100x3550	10500x3100x3550	9180x2625x3470	8900x2625x3470	8970x2625x3300	8970x2625x3300
	整机质量 (标配) Operating weight(Standard)	kg	24000	26000	16100	14500	16500	16500

关键零部件 Key parts



整机动力配置

配置上柴SC8DG2B1、东风康明斯和进口康明斯发动机，动力强劲，功率储备系数大，为整机作业提供有力的保障；使整机排放达标，满足不同市场的需要。

- 上柴SC8DG2B1
- 东风CUMMINS
- 进口CUMMINS

Power of Grader

Equipment with Shanghai diesel SC8D engine, Dongfeng Cummins and Imported Cummins (tier3) QSB series electronic engines generates dynamic power and large power storage of the whole machine, providing capable guarantee for whole-machine operation and making machine emission satisfy demands of diversified markets.

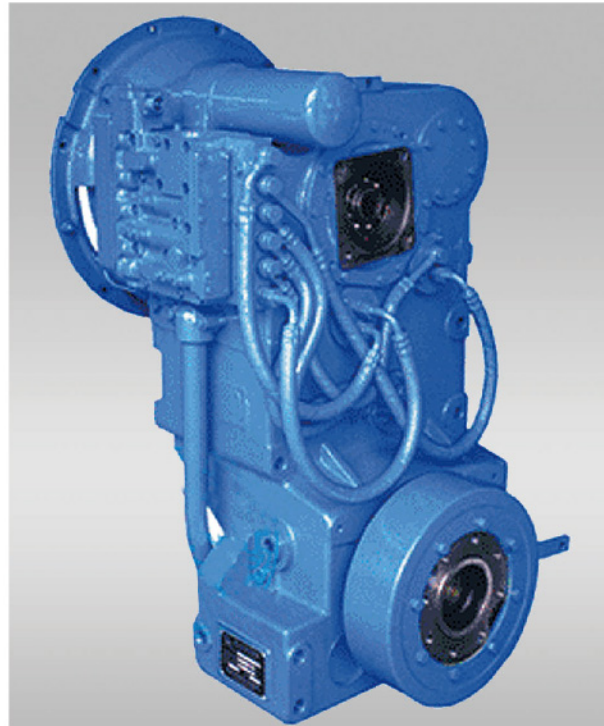
- Shanghai diesel engine SC8DG2B1
- Dongfeng Cummins
- Imported Cummins

传动系统

- 采用液力-机械传动
- 液压-机械传动
- 液压-液力-机械传动
- 变速箱—定轴式常啮合电液操纵换挡变速箱，操作方便，传动平稳。
- 配套—杭齿、柳州ZF、DANA

Transmission System

- Adopt hydraulic power- mechanical transmission
- hydraulic transmission- mechanical transmission
- hydraulic transmission- hydraulic power- mechanical transmission
- Gearbox—The electro-hydraulic controls the power shift gearbox, with convenient operation and stable drive.
- Equipped Hangzhou advance gearbox, Liuzhou ZF gearbox DANA gearbox



档位选择器

电液控制动力换挡变速箱，前进6档，后退3档。

Gear Selector

Power-shift (electric hydraulic) countershaft design with six forward and three reverse speeds.



液压系统

关键元器件采用进口产品。

如美国EAT.N、HUSCO、意大利HYDROCONTROL、美国MICO等公司的液压元件，确保系统稳定可靠。

Hydraulic System

The imported parts are selected for the key components. Such as U.S.A EATON, HUSCO, Italy HYDROCONTROL, etc., and makes the hydraulic system stable and reliable.



铲刀

铲刀滑动采用多方向可调双轨机构，刀片采用直板式高强度耐磨材料，两边可调换使用，提高刀片的使用寿命。铲土角变化采用油缸控制，平衡性好，可根据不同的土质调节铲刀的切入角度。

Blade

Blade-slipping use adjustable double slip orbit mechanism. The high intensity wearable reamer has two working sides to be used in turn, improving the life of blade. The change of working angle is controlled by single-cylinder. Hence, the blade has good balance and can be adjusted by different soil environment

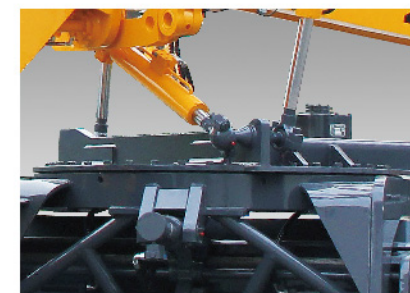


转向系统

采用负荷传感、转向优先节能型液压转向系统，配合铰接车架，使整机转向机动灵活。

Steering system

Fully hydraulic load-sensing which is preferential and energy - saving combines with the articulated frame to make the machine maneuverable.



工作装置

轨道间加装耐磨衬层，确保铲刀转动灵活、平整精度高，维修费用低。

Working Equipment

Hardened circle with anti-wear lining for flexible turn of the blade, high leveling accuracy and low maintenance cost.



常规型平地机

General Series Motor Grader

主要用于公路、机场等大面积的地面平整和挖沟、刮坡、推土、松土、除雪等作业，是国防工程、矿山建设、城乡道路等建筑施工和水利建设、农田改良等工程项目所必须的工程机械。

The machine is mainly used for ground leveling, trenching, cutting surface, dozing, soil loosening, and snow plowing of road, airdrome or farmland. It's necessary construction machines for national defense engineering, mine construction, town and country roads building, and farmland improvement.

GR100/GR135/GR165/GR180 GR200/GR215/GR230

性能特点 Performance and characteristic

新外观设计

采用铰接式车架，配合前轮转向，转弯半径小，机动灵活。

电液控制动力换挡变速箱，前进6档，后退3档。

采用国际化配套液压件，工作可靠。

铲刀动作为全液压控制。

后桥为三段式驱动桥装有自锁差速器。

可调整操作台、座椅，操纵手柄和仪表布置合理，使用方便，提高了驾驶舒适性。

驾驶室豪华美观、视野开阔、密封良好。

可选装前推土板、后松土器、前松土耙、自动找平装置。

New appearance design.

The articulation frame is adopted and matched with the steering of the front wheel, with small turning radius, maneuvering and flexible.

The electro-hydraulic controls the power shift gearbox, with 6 ahead gears and 3 back gears.

The international matching hydraulic parts are adopted, with reliable operation.

The motions of the blade are fully hydraulically controlled.

The three-section driving axle is equipped with a self-locking differential mechanism.

The adjustable manipulation table and seats and reasonable arrangement of manipulating handle and instruments lead to convenient application and improved comfort of driving.

The cab is grand and nice, with wide eyeshot and good sealing.

Additional alternative installation includes bulldozing plate, real scarification device, front scarification harrow and automatic leveling device.



全轮驱动平地机

All Wheel Drive Motor Grader

主要用于公路、机场等大面积的地面平整和挖沟、刮坡、推土、松土、除雪等作业，可以实现6轮、4轮、2轮三种驱动模式。在6轮驱动模式下，动力比4轮驱动提升30%，适用泥泞、雪地等恶劣工况；2轮驱动（前轮）模式，可以实现精细平地作业。

The machine is mainly used for ground leveling, trenching, cutting surface, dozing, soil loosening, and snow plowing of road, airdrome or farmland. The motor grader can implement 6 wheels, 4 wheels or 2 wheels drive. when used 6 wheels crawling mode, Power ratio of 4 wheel drive lifting 30%, mud, snow and other adverse conditions apply; When Only Using front wheels called "crawling model", The motor grader can carry out fine ground leveling

GR215A

性能特点

Performance and characteristic

东风康明斯/进口康明斯，具有高可靠性和燃油经济性，低噪音，低排放。
ZF电液控制动力换挡箱，操作灵活方便。
三段式驱动后桥，带NO-SPIN自动防滑差速器，传动平稳可靠。
前轮液压辅助驱动系统，与后轮换挡位联锁控制，整机可实现6轮、4轮及2轮驱动。
双回路行车制动液压系统，安全可靠。
ROPS驾驶室，具有自动换风功能，豪华美观、视野开阔、密封良好。
可选装部件：前推土板、前松土耙、后松土器、滚珠转盘、自动找平系统。

The 6CTA8.3 of DongFeng Cumming engine has the characteristic of high reliability and fuel economy, low noise and low emission.
ZF electronic and liquid control transmission, easy to operate.
Rear axle of three-partial drive, with NO-SPIN automatic and skid-proof differential, makes transmission more calm and dependable.
Controlled by front wheel with hydraulic assistant drive system and back wheel, implement 6 wheels, 4 wheels or 2 wheels drive.
Double loop brake hydraulic system makes it much safer and dependable.
ROPS Cap features automatic ventilation, grandness and loveliness, wide eyeshot and good sealing.
Select parts: front blade, front ripper, back ripper, ball bearing circle, automatic horizontal system.



矿用型平地机

Mining Series Motor Grader

主要用于露天煤矿、铁矿等矿场的地面平整、清理作业，整机重量大，动力强劲，设备稳定性强。

Mainly utilized in ground leveling and clean-up operations of opencast coal mine, iron ore and other fields, featuring large weight, dynamic power and strong stability of equipment.

GR260/GR300/GR300A

性能特点

Performance and characteristic

发动机采用电喷技术，整机排放达到欧Ⅲ标准。

采用过载保护的蜗轮箱，铲刀具有浮动功能。

采用负荷传感液压系统。

具有电子检测、三级故障报警功能。

变速箱采用电液控制动力换挡，换挡方式为W字型。

采用湿式控制驱动桥，制动采用双回路液压系统。

驾驶室内饰立柱全包，冷暖两用空调，有除霜和换新风功能。

高强度耐磨刀片，寿命长。

整机达到CE认证要求

The engine adopt PLC controller,the whole machine reach the standara of EⅢ let.

Worm wheel case with overloap protection and blade with floating funtion.

Hydraulic system with load sensing.

Electron checking and third level failuer warning system.

The gearbox shift by power of electron and hydraulic,shift mode is shape.

Wet brake driving axle,double circuit brake

Ornament cab,cool and warm air-condition can defrost and bring fresh air.

High intensity and wearable reamer

The whole machine had past CE.



寒区型平地机

Cold Regions Series Motor Grader

主要用于公路、机场等大面积的地面平整、挖沟、刮坡、推土、松土、除雪等作业，整机性能满足-30℃施工环境。

Mainly used in highway, airport and other large area ground leveling, ditches, slope scraping, bulldozing, loose soil, snow removal operations, machine performance to meet -30 °C construction environment.

GR215L

性能特点

Performance and characteristic

整机配置性能满足-30° C施工环境。性能优良动力系统，采用东风康明斯6CTA8.3-C215发动机。

ZF电液控制动力换挡箱，操作灵活方便。

三段式美驰驱动后桥，带NO-SPIN自动防滑差速器，传动平稳可靠。

安全可靠制动系统，行车制动为全液压双回路制动。

操作方便的转向系统，采用负荷传感式全液压系统，配合铰接式车架，大转向角前桥，转向灵活。

豪华驾驶室，视野开阔，优良的密封性、保温采暖性能、除霜性能。

循环冷却介质加热系统和进气预热系统，可保证低温的环境使发动机正常启动

大功率暖风机，电加热座椅，燃油加热器加热系统进行供暖除霜，保持驾驶室内部操作环境的舒适性

先进可靠液压系统，进口多路阀，液压锁。

The machine can work at -30° C. Adopt Cummins engine 6CTA8.3-C215 which with excellent power system.

ZF electronic and liquid control transmission, easy to operate.

Three portions drive rear axle, with NO-SPIN automatic and skid-proof differential, make transmission calmly and dependably.

Safe and reliable brake system, full hydraulic double circuit brake system is adopted.

Steering system showcases easy manipulation, adopts load sensing hydraulic system and articulation frame, featuring large steering of front wheel, small turning radius and flexibility.

The grand and nice cab features wide eyeshot, good sealing, profound thermal insulation properties and defrosting.

The cooling medium heating system and air intake preheating system ensure the engine can be started in the low temperature.

It is comfortable in the cab which has high-power heaters, seat with electric heating function and heating and defrosting system.

Adopting imported multi-way valve and hydraulic lock with reliable hydraulic system.

Working device adopts worm wheel case with overload protection, slewing ring, vibration reducing system and blade floating system. The Strengthen structure of the blade has long working life.

Appearance with a unique style of XCMG



沙漠推土型平地机

Desert Bulldozing Series Motor Grader

主要用于公路、机场、农田等大面积的地面平整、挖沟、刮坡、推土、松土等作业，整机性能满足50℃的施工环境；能够满足恶劣工况，工况适应强。

Mainly utilized in ground leveling, ditches, slope scraping, bulldozing and loosening soil operations upon roads, airports, farmlands and other large areas. The whole machine is fully capable under 50 °C construction environment and harsh working condition with strong adaptability.

GR180R

性能特点

Performance and characteristic

性能优良动力系统，采用CUMMINS QSQ6.7（三阶段）发动机，低噪音，低排放，储备扭矩大，能满足恶劣工况下施工
ZF电液控制动力换挡箱，操纵灵活方便
三段式加强型美驰驱动桥，带NO-SPIN自动防滑差速器，传动平稳可靠。

安全可靠制动系统，行车制动为全液压双回路制动。

操纵方便的转向系统，采用负荷传感式全液压系统，配合铰接式车架，大转向角前桥，转向灵活。

ROPS&FOPS驾驶室，驾驶室内饰立柱软包，装备电动洗窗和除雾装置，冷暖两用空调，有除霜和换新风功能。

可调整操纵台、座椅，操纵手柄和仪表布置合理，使用方便，驾驶舒适。

先进可靠液压系统，进口多路阀，液压锁。

工作装置采滚珠转盘回转机构配摩擦保护蜗轮箱工作可靠寿命长。

外观造型为独特的徐工风格。

The power system is excellent, adopt Cummins QSB6.7(stage III) engine which has the performances of low-noise, low-emission and enough reserve power, it can work in harsh environments.

ZF electronic and liquid control transmission, easy to operate.

Three portions drive rear axle, with NO-SPIN automatic and skid-proof differential, make transmission calmly and dependably.

Safe and reliable brake system, full hydraulic double circuit brake system is adopted.

Steering system is easy to manipulate, adopt load sensing hydraulic system the articulation frame is adopted and matched with the steering of front wheel, with small turning radius, maneuvering and flexible.

ROPS&FOPS cab with electric washing window equipment, clear fog equipment, air-condition of refrigeration and warm which has the functions of defrost and bring fresh air.

The manipulation table and seats are adjustable. the arrangement of manipulation handle and instruments are reasonable, with convenient application, and comfort driving.

Adopt Import multi-way valve and hydraulic lock, the hydraulic system is reliable.

Working device adopts worm wheel case with overload protection, slewing ring, which has long working life.

Appearance with a unique style of XCMG

工程案例 Construction cases



达陕高速公路施工



内蒙古天矿施工图



如东省际高速施工图



鄂尔多斯露天矿场施工图



苏丹维和部队平地机



山东德州施工

工程案例 Construction cases



内蒙古天矿施工图



青岛场地平整



哈尔滨除雪作业



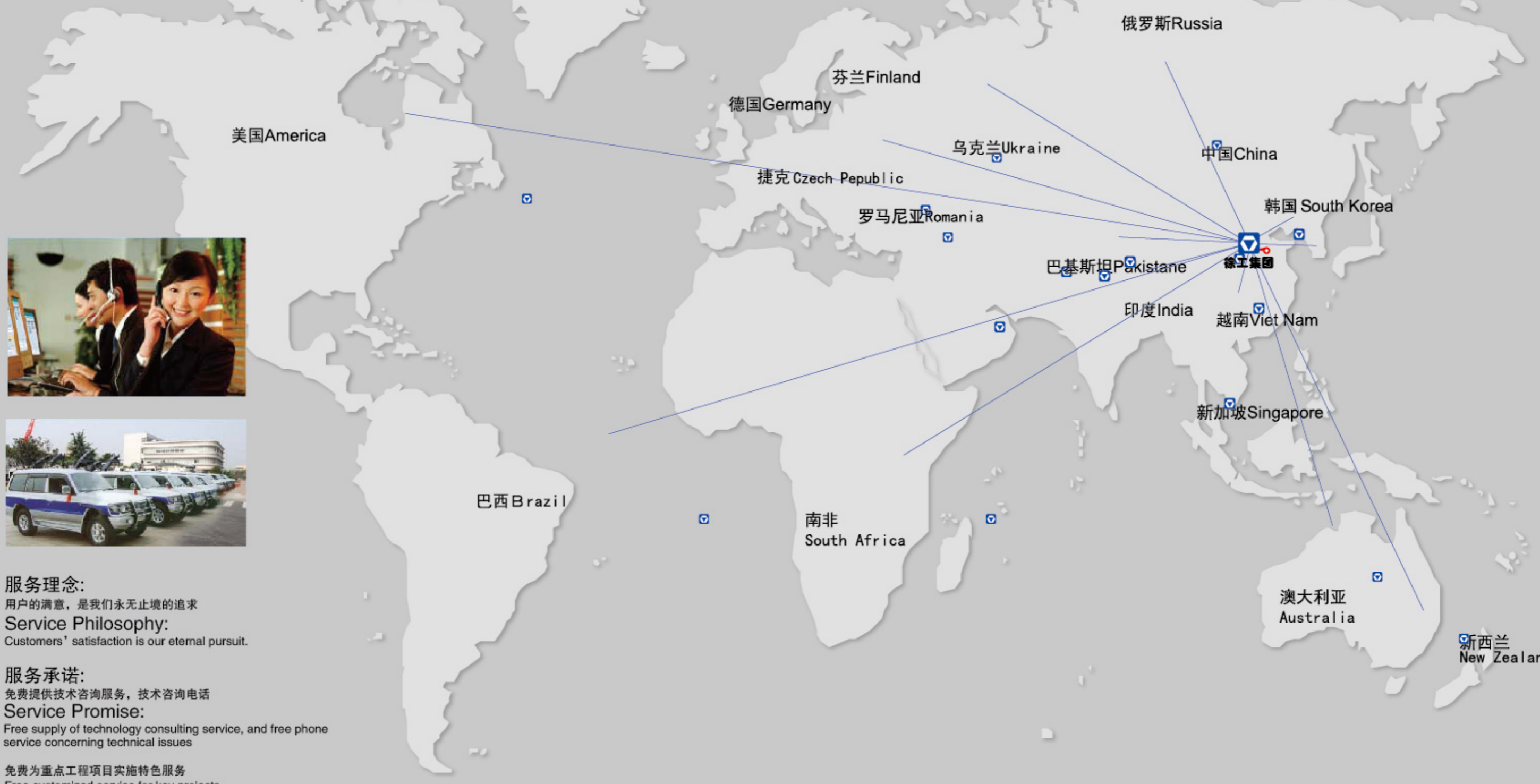
淮安经济开发区施工



汶川灾区救援



德国宝马展参展



服务理念:

用户的满意, 是我们永无止境的追求

Service Philosophy:

Customers' satisfaction is our eternal pursuit.

服务承诺:

免费提供技术咨询服务, 技术咨询电话

Service Promise:

Free supply of technology consulting service, and free phone service concerning technical issues

免费为重点工程项目实施特色服务

Free customized service for key projects

免费为用户培训操作、维修人员

Free training for customers' operational and maintenance personnel

免费实施250、500、1000小时保养服务(材料自备)

Free implementation of 250h, 500h and 1,000h maintenance services (Customers provide materials)

客服热线:
Customer Service Hotline
400-110-9999