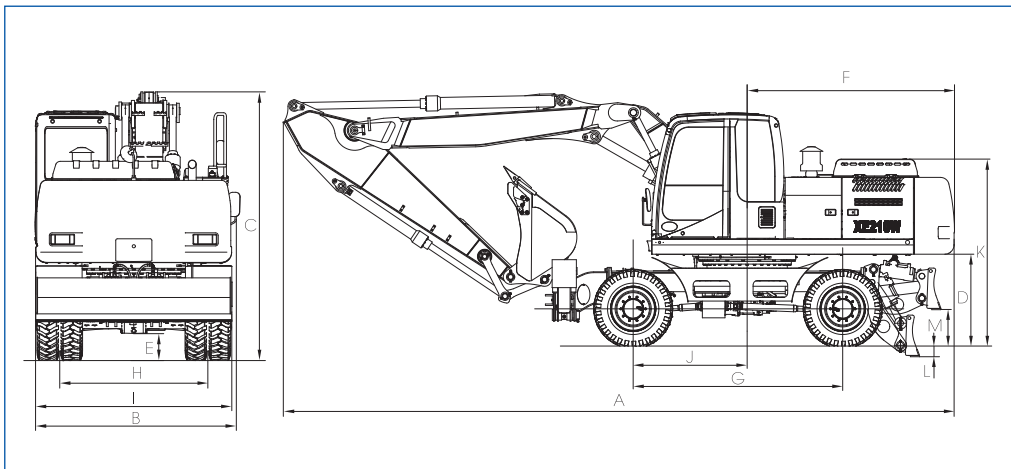
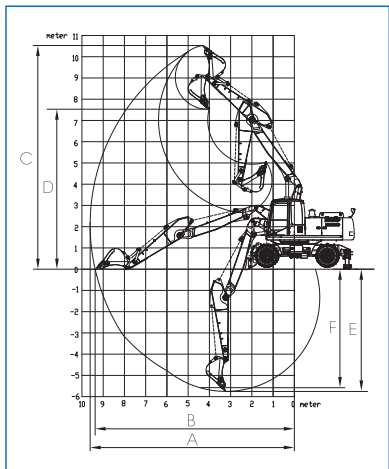


外形尺寸与工作范围

Appearance size and working scope



参数

Parameters

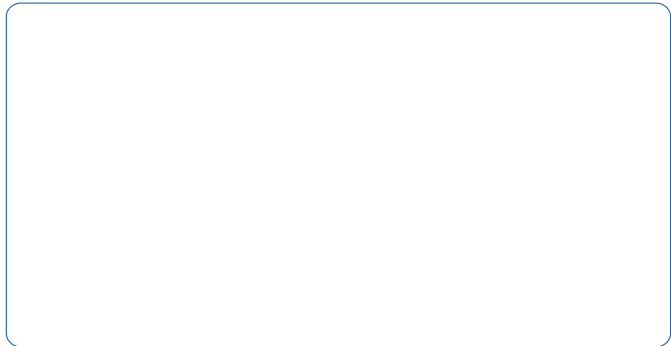
型号 Model	单位 Unit	参数 Parameter
操作重量 Operation weight	kg	21140
铲斗容量 Bucket capacity	m³	0.86

发动机 Engine		
型号 Model	/	QSK23-C760
额定功率 Rated power	kw/rpm	567/1800
最大扭矩 Max. torque	N.m	799
排量 Displacement	L	6.7
燃油箱 Fuel tank	L	305

主要性能 Mian performance		
额定流量 Rated flow	L/min	220
工作压力 Working pressure	MPa	32
液压油箱 Hydraulic tank	L	202
回转速度 Rotating speed	r/min	13
铲斗挖掘力 Bucket digging force	kN	115
斗杆挖掘力 Arm crowd force	kN	91
最小转弯半径 Min. swing radius	mm	6500
行走速度 Travel speed	km/h	9.5/31
爬坡能力 Grade ability	°	35°

液压系统 Hydraulic system		
主泵 / 先导泵 Pump/Pilot pump	/	Two ram pumps

代理商 Agent



统一客服热线 Customer service hotline: 400-110-9999

型号 Model	单位 Unit	参数 Parameter
外形尺寸 Apperance size		
A 总长 Overall length	mm	9135
B 总宽 Overall width	mm	2552
C 总高 Overall height	mm	3370
D 配重离地间隙 Ground clearance of counterweight	mm	1250
E 最小离地间隙 Min. ground clearance	mm	340
F 尾部回转半径 Tail swing radius	mm	2820
G 轴距 Wheel base of crawler	mm	2850
H 轮距 Tumbler distance	mm	1890
I 底盘宽度 width of chassis	mm	2495
J 前桥到回转中心距离 Distance between the front axle and the center of rotation	mm	1550
K 发动机罩高度 Height of engine hood	mm	2542
L 推土铲最大掘地深度 Max. dozer cutting depth	mm	145
M 推土铲最大提升高度 Max. dozer lifting height	mm	479
推土铲 宽 / 高 Dozer (width/height)	mm	2467/566

工作范围 Working scope		
A 最大挖掘半径 Max. digging radius	mm	9613
B 最大地面挖掘距离 Max. ground digging distance	mm	9380
C 最大挖掘高度 Max. digging height	mm	10528
D 最大卸载高度 Max. dumping height	mm	7530
E 最大挖掘深度 Max. digging depth	mm	5755
F 8 英尺水平面挖掘深度 Digging depth at the range of level 8 feet	mm	5580

标配 Standard configuration		
斗杆长度 Length of bucket arm	mm	2910
斗容 Bucket capacity	m³	0.86

本产品随技术进步不断更新改进，如有修改，恕不另行通知。

样本图片与实物不符的，以实物为准。

All the information, charts and standards in this brochure are the latest acquired upon publication.

All information shall be subject to changes without additional notices. If there is inconsistency between image and the actual product, the actual product shall govern.

印刷时间 Printing time: 2013 年 1 版 1 次印刷



地址: 中国江苏徐州经济开发区东环工业园28号
Address: No.28 Donghuan Industrial Area Economic Development Zone of Xuzhou, Jiangsu, China.



XE210W 轮式挖掘机

Wheel Excavator

- 铲斗容量 Capacity of bucket (m³): 0.86
- 操作重量 Operating weight (kg): 21140
- 额定功率 Rated power (kW/rpm): 129/2200

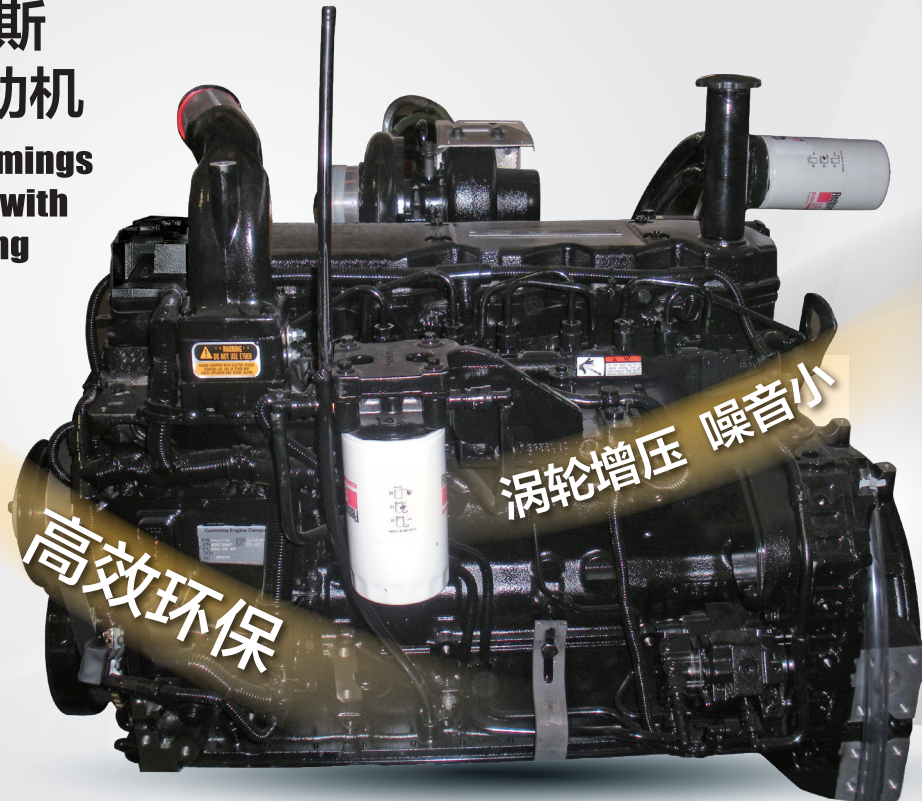
厚积薄发
Spur with long accumulation

超越精典
Beyond the classic



原装康明斯 QSB6.7发动机

Imported Cummings
QSB6.7 engine with
original packing



高效环保

涡轮增压 噪音小

- ◆ High efficient and environmental friendly
- ◆ Turbo-charging
- ◆ low noise

发动机 Engine

原装康明斯QSB6.7发动机，噪音小，充分满足高效环保作业要求；采用先进的涡轮增压技术，大大增强了机器的高原适应性。

Imported Cummings engine QSB6.7 with the feature of low noise can meet the operating requirements of high efficiency and environmental friendly; Besides, it adopts the advanced turbo charging technique to enhance the machine's plateau adaptation.

电脑控制系统 Computer control system

与国际知名公司合作开发的新型ESS微电脑控制系统，充分利用发动机功率，使机器在不同的作业状态下始终保持最佳的效率及经济性。

The new ESS microcomputer power control system developed with an international famous company take full advantage of the engine power, which can make the machine keep the best efficiency and economy in different working conditions.

马达 Motor

自动控制行走马达，根据负载，压力自动调节排量，增强爬坡能力，提高行走速度。

Control the travel motor automatically, adjust the displacement automatically according to the load pressure to enhance the gradeability and increase the travel speed.

液压系统 Hydraulic system

独有的液压系统，可根据作业需求调节油量，增大挖掘力，令工作更顺畅、高效；关键液压元件均采用国际知名品牌，保证产品品质，配备防爆阀、液压锁等，大大提高系统安全性。

Unique hydraulic system can adjust the oil capacity and enhance the digging force according to the demands of the operation, which thus makes the operation smoothly and efficiently. Key hydraulic elements are all adopted with international famous brands to guarantee the good quality of the product. Hydraulic components are equipped with explosion-proof valve, balance valve and hydraulic lock, which can greatly improve the safety of the system.

转向系统 Hydraulic system

配置应急转向系统，在挖机不启动时，通过转向机内置手动泵，可实现基本的转向功能，提高安全性。

With the emergency steering system, the basic steering function can be achieved through the built-in manual pump within the steering machine to improve the safety when the excavator stops working.

高品质驾驶享受

High quality driving enjoy



驾驶室 Cab

全新宽敞增大驾驶室，广阔的视野空间，采用低噪音发动机与风扇，有效的降低了室内噪音，提高了整机舒适性。

That fully new cab with large space and broad vision view, by use of low noise engine and fan, the indoor noise is effectively reduced and the overall comfort is improved.



空调及暖风机 Air-conditioner and warm air blower

采用大容量空调及暖风机，为操作者提供舒适的操作环境。

Adopt air-conditioner with large capacity and warm air blower to provide a comfortable operating environment for the operator.



方向盘 Steering wheel

可倾斜的方向盘设计，前后可倾斜29°，上下可伸缩60mm，可满足不同人群的需求。人体工程学踏板装置，使操作更加舒适自如，提高了操作安全性。

The Tilt steering wheel can tilt for 29 ° front and back and flex for 60mm up and down, which can meet the needs of different customers. The brake pedal and accelerator pedal are arranged with the ergonomics concept to make the operation more comfortable and thus improve the safety of operation.



显示器 Monitor

多功能LCD大屏显示器，全面监控发动机的工作状态（转速，水温，油位等），机器的各种运行信息随时查询，功能开关集中布置在控制面板上，通过点触式按钮，轻松选择。

Multi-functional LCD monitor with large screen and digital display can comprehensively monitor the engine's working states (rotary speed, water temperature and oil level) and make the information for all kinds of the operations checked at any time. The functional switches are assembled on the control panel, and can be selected easily through the contact buttons.

坚固高效，持久耐用

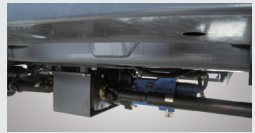
Sturdy, efficient and durable



铲斗切削板 Bucket cutting plate

铲斗切削板均采用特种耐磨钢板，适合重载作业要求，配上耐磨型斗齿、侧齿，延长了产品的使用寿命。

Bucket cutting plate adopts special wear-resistant steel plate, which is suitable for heavy duty operation; also it is equipped with wear resistance bucket tooth and lateral tooth to prolong the service life of the product.



箱桥 Box Bridge

采用国际一流品牌的新型箱桥，具有超强的行走能力；变速箱换挡采用电磁阀控制，具有反馈迅速换挡平顺的特点。

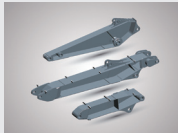
By use of the new international famous box bridge, the machine possesses the super traveling ability. Electromagnetism valve control is adopted while shifting the gears, which makes the response quick and gear-shifting smooth.



两节动臂技术 Two boom technology

在两节动臂之间增加一个调整油缸，调节两节动臂之间的夹角，扩大了工作装置的作业范围，满足城市及狭窄环境的需要。

Adjusting oil cylinder is added between two booms to adjust the angle between the two booms, enlarge the operating range of the working device and meet the needs of the city and narrow environment.



结构件 Structural parts

结构件进行有限元分析，并根据受力情况，关键部位强化设计，确保在多样化、高强度作业中的耐用性。

A finite element analysis (FEA) has been made on the Structural parts and the intensified design done for the key parts according to the working situation to ensure the durability during the diversified and heavy duty operation.



斗杆 Arm

斗杆的重要铰接部位采用锻件结构，通过改变形状及板厚，缓和应力，提高耐久性。动臂、斗杆销轴的连接部位，采用高耐磨高强度衬套，经久耐用。

The key hinge positions adopt the forging structures to relieve the stress and improve the durability by way of changing the shape and the thickness of the plate. The connection part between the boom and arm hinge pin is adopted with the high wear-resisting and high strength bushing to enhance the durability.

便捷的维修保养

Convenient Maintenance



触手可及的维修保养点 Maintenance and repair points within reach

- 油水分离器、燃油滤清器、机油滤清器设置触手可及，维修保养更便捷；空滤器设置于驾驶室后部，便于清理和更换滤芯。
- 散热器外部设置防护网，有效防止飞絮等杂物吸入，拆洗方便。

The oil-water separator, fuel filter and oil filter set in the places where can be accessed without touch. Air filter is placed in the rear part of the cab, which is convenient for the cleaning and replacement of the filter element. The protective screening set outside the radiator can prevent drawing sundries, and is easy to dismantle and clean.

定位系统 Positioning system

用GPS卫星定位系统，远程诊断，故障预警，维修保养，自动提醒。

Adopt GPS, which can automatically prompt the long-distance diagnosis, early warning for troubles, and maintenance.