

www.xcmg.com

# XGC28000 履带起重机

## XGC28000 CRAWLER CRANE

Официальный дилер  
спецтехники XCMG в России  
+7 (495) 641-80-47  
info@techno-xcmg.ru

 **徐工集团工程机械有限公司**  
XCMG CONSTRUCTION MACHINERY CO.,LTD

地址(Add): 中国江苏省徐州市金山桥经济开发区桃山路19号 邮编(Post Code): 221001  
No.19 Taoshan Road, Economic development zone of jinshanqiao,Xuzhou,Jiangsu Province,China  
销售电话(Sale Tel): 86 0516-87892094 销售传真(Sale Fax): 86 0516-87892015  
服务电话(Service Tel): 86 400-001-5678 服务传真(Service Fax): 86 0516-87892080  
备件电话(Service Tel): 86 0516-87892086 备件传真(Service Fax): 86 0516-87892083  
服务质量投诉电话(Quality Supervision Tel): 86 0516-87892587  
统一服务热线(Unified service hotline): 86 400-110-9999

请垂询  
CONTACT

# XGC28000 履带起重机

## XGC28000 CRAWLER CRANE



 **徐工集团工程机械有限公司**  
XCMG CONSTRUCTION MACHINERY CO.,LTD

# contents 目录

产品亮点 Product highlights	( P02-P03 )
主要技术参数 The Main Technical Parameters	( P04-P04 )
主要零部件 Main parts	( P05-P08 )
详细介绍 Description On Components And System	( P09-P12 )
重型主臂作业范围 Heavy Boom Working Range	( P13-P13 )
重型主臂起重性能表 Heavy boom lifting performance table	( P14-P14 )
轻型主臂作业范围 Light Boom Working Range	( P15-P15 )
轻型主臂起重性能表 Light boom lifting performance table	( P16-P16 )
塔式副臂作业范围 Tower jib Working Range	( P17-P17 )
塔式副臂起重性能表 Tower jib lifting performance table	( P18-P22 )
专用副臂作业范围 Special jib working radius	( P23-P23 )
专用副臂起重性能表 Special jib lifting capacity table	( P24-P24 )
市场应用 Market application	( P25-P26 )



## 产品亮点 Product highlights

### 01 双发双动力实时分配介入系统

Optimized design of transport and disassembly

两个V型8缸奔驰发动机形成独立或并行双动力系统，达到同级产品最高排放标准，可根据用户实际吊装工程需要切换成单发或双发工作，双动力系统互为冗余，系统安全保障性高，大幅度提高燃油经济性，真正实现节能减碳。

Two V-shaped 8-cylinder Mercedes-Benz engines form an independent or parallel dual-power system to achieve the highest emission standard for its class, and can switch-over from single engine to two-engine work according to users' actual lifting need, with high security, greatly improved fuel economy, and truly achieved energy conservation.

### 02 驾驶舱级动力操控单元

Operator's cabin power control unit

配备宽敞舒适的操纵室，提供民用电源、变频冷暖空调、冰箱、可折叠卧铺等工作生活便利条件，环境舒适，工作时，座椅可调整俯仰角度、前后移动距离，扩大视野；配备双发动机双液压回路并配有备用柴油供电系统，为各部件组装、野外场地建设、照明等提供移动式大功率液电动力源。

Spacious and comfortable, equipped with civil power, frequency heating air conditioner, refrigerator, folding berth, which convenient and comfortable for work and operation; the seat adjustable tilting angle and forward/backward movement for increased field of view; equipped with two-engine dual hydraulic circuit and a standby diesel-electric power supply system to provide mobile high-power electro-hydraulic power source for assembly of various parts, field site construction, and lighting, etc.

### 03 操控快捷的超起配重变幅机构

Quickly controllable superlift counterweight luffing winch

采用液压力实现配重幅度的改变，提高了超起装置操作可靠性、场地适应性，节约了组装使用时间；该机构选配智能化自适应配重变幅控制系统，具备负载反馈功能；根据实际吊重量实时确定超起配重幅度，便于实现对整车重心位置的实时监控，超起工况高效安全。

Hydraulic power to achieve counterweight luffing, improved superlift operational reliability and site adaptability, saved crane assembly time; the intelligent self adaptive counterweight luffing control system with load feedback function; real-time determination of superlift counter-weight radius according to actual lifting load, easy to achieve real-time monitoring of overall center of gravity, with high work efficiency and security for superlift working condition.

### 04 功能强大的无线遥控系统

Powerful wireless remote control system

满足跨越障碍吊装作业时远距离精准安装要求，操控范围达到500m，减少辅助工作人员，降低吊装指挥难度。

To meet the long-range precise installation requirement of lifting operation over obstacles, the operation control range reached up to 500m, reduced support staff, and decreased lifting guideline difficulty.



## 产品亮点 Product highlights

### 采用专用电液比例控制技术

Special electro-hydraulic proportional control technology

无限调速，控制更精准满足重大设备吊装定位的精度要求。

Infininitely variable speed control and more accurate manipulation to meet the precise requirement of large size equipment lifting positioning.

### 06 专用六排轴向滚柱重型回转支承

Special heavy-duty six-row axial roller slewing ring

与德国罗特艾德联合开发符合2000t超强性能的专用重型回转支承；承载能力强大，与6个倒置回转减速机啮合，驱动力矩强大、回转平稳。

It is jointly developed by Rothe Erde, Germany, for super performance of 2000t load, with heavy load carrying capacity, meshed with six inverted slewing reducers, for powerful drive torque and smooth slewing.

### 07 前后分体式转台

Front and rear split-type turntable

采用前后分体式结构，与履带底盘采用36根同心圆周分布式液压同步动力销连接，整机更紧凑，分体安装更便捷。

Front and rear split-type structure, connected with crawler chassis by 36 pieces of concentric circle distributed synchronous hydraulic power pin, for more overall compact, and more easy split-type installation.

### 齐全的安全装置

Well-equipped safety devices

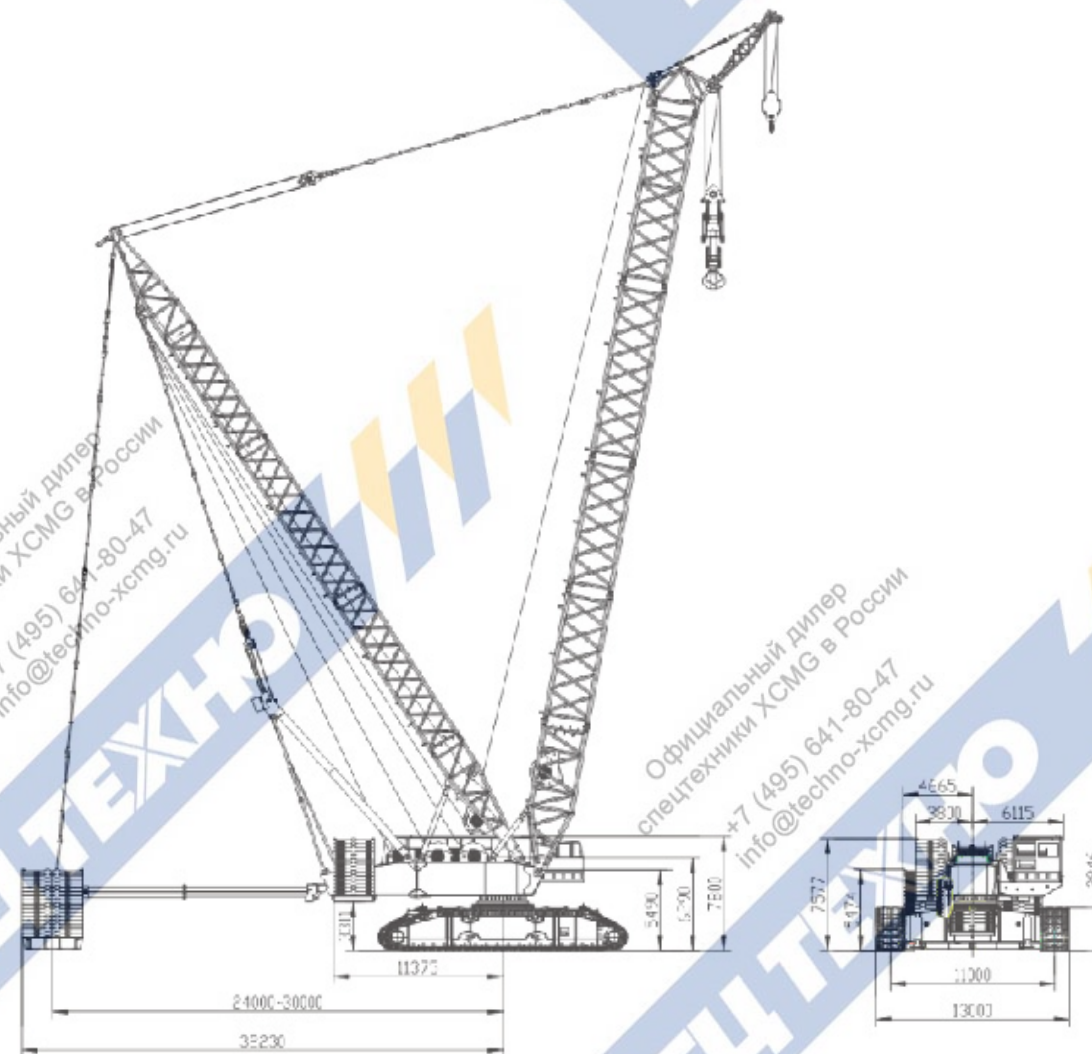
两个彩色大屏幕完成系统的动作选择及参数实时监控，确保起重机安全工作。

Two large color screen displays achieved systematic movement options and real-time monitoring of crane control parameter to ensure the safety for crane lifting operation.



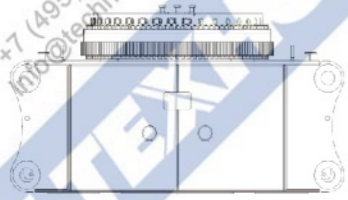
## 主要技术参数 The Main Technical Parameters

项目Item	单位Unit	数值Parameter
最大起重量	Max. lifting capacity	t 2000
重型主臂长度	Heavy boom length	m 54~108
轻型主臂长度	Light boom length	m 114~156
专用副臂长度	Special jib length	m 18
塔式副臂长度	Tower jib length	m 36~108
桅杆变幅最大单绳速度	Mast luffing winch max. single line speed	m/min 40×2
塔臂变幅最大单绳速度	Tower jib luffing winch max. single line speed	m/min 105
主臂变幅最大单绳速度	Boom luffing winch max. single line speed	m/min 120
最大回转速度	Max swing speed	r/min 0.6
最高行走速度	Max travel speed	km/h 0.8
平均接地比压	Mean ground pressure (not more than)	MPa 0.26
发动机功率	Engine output power	kw 2×480
最大单件运输重量	Max. transport weight of single unit	t 69

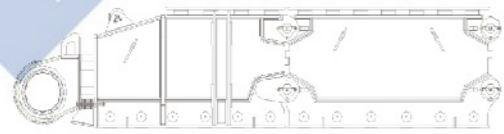


## 主要零部件 Main parts

名称	长 L(mm)	宽 W(mm)	高 H(mm)	重量 W(t)	数量 Quantity
车架 Car-body	6.09	3.47	3.277	69	1



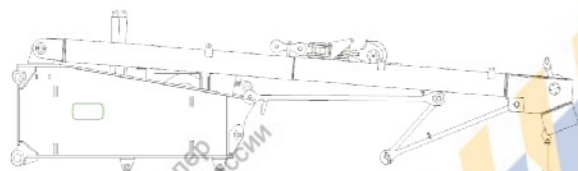
名称	长 L(mm)	宽 W(mm)	高 H(mm)	重量 W(t)	数量 Quantity
履带架 (前部+中部) Track frame (front and middle)	10.513	1.945	2.39	54.6	2



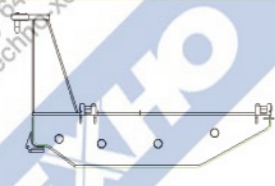
名称	长 L(mm)	宽 W(mm)	高 H(mm)	重量 W(t)	数量 Quantity
履带总成 Track assembly	11.69	2.0	0.84	49.9	2



名称	长 L(mm)	宽 W(mm)	高 H(mm)	重量 W(t)	数量 Quantity
转台后部结构 Turntable rear part	15.356	3.58	3.231	53	1



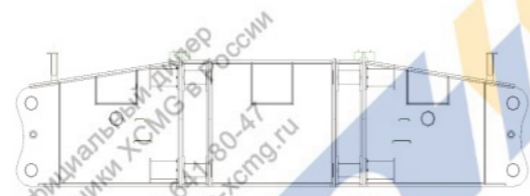
名称	长 L(mm)	宽 W(mm)	高 H(mm)	重量 W(t)	数量 Quantity
动力箱后托架 Powerbox rear bracket	4.64	2.568	0.719	2.5	1



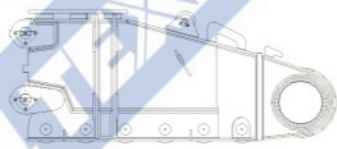
名称	长 L(mm)	宽 W(mm)	高 H(mm)	重量 W(t)	数量 Quantity
主起升机构 Main hoisting winch	2.15	2.106	2.165	25.9	2



名称	长 L(mm)	宽 W(mm)	高 H(mm)	重量 W(t)	数量 Quantity
连接梁 Connection beam	10.15	2.71	2.44	33.4	2



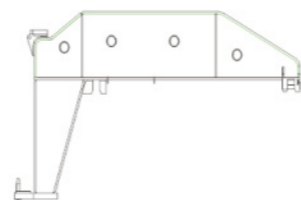
名称	长 L(mm)	宽 W(mm)	高 H(mm)	重量 W(t)	数量 Quantity
履带架 (后部) Rear track frame	5.76	1.945	2.39	32.7	2



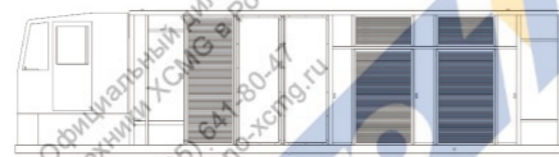
名称	长 L(mm)	宽 W(mm)	高 H(mm)	重量 W(t)	数量 Quantity
转台前部结构 Turntable front part	8.83	3.48	3.14	44	1



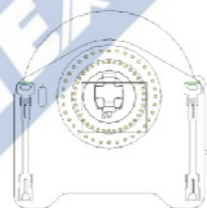
名称	长 L(mm)	宽 W(mm)	高 H(mm)	重量 W(t)	数量 Quantity
动力箱前托架 Powerbox front bracket	4.64	2.568	0.719	2.5	1



名称	长 L(mm)	宽 W(mm)	高 H(mm)	重量 W(t)	数量 Quantity
动力箱及操纵室 Powerbox and operator's cab	12.8	3.2	3.09	32	1



名称	长 L(mm)	宽 W(mm)	高 H(mm)	重量 W(t)	数量 Quantity
单滑轮起升机构 Single top hoisting winch	1.64	1.72	2.172	13.5	1

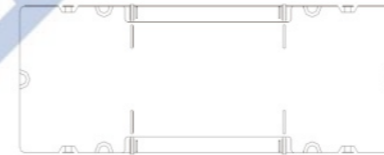


## 主要零部件 Main parts

名称	长 L(mm)	宽 W(mm)	高 H(mm)	重量 W(t)	数量 Quantity
平衡重块 Counterweight slab	2.75	2.0	0.395	10	118



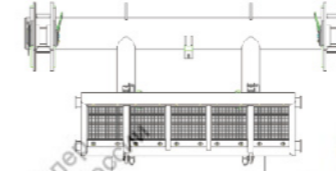
名称	长 L(mm)	宽 W(mm)	高 H(mm)	重量 W(t)	数量 Quantity
上车平衡重托盘 Superstructure counterweight tray	7.6	2.81	0.49	20	1



名称	长 L(mm)	宽 W(mm)	高 H(mm)	重量 W(t)	数量 Quantity
变幅平衡重托盘 II Luffing counterweight tray II	0.897	0.67	0.49	0.3	6



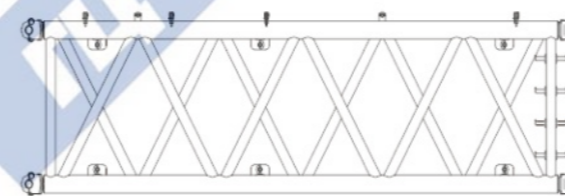
名称	长 L(mm)	宽 W(mm)	高 H(mm)	重量 W(t)	数量 Quantity
连接架 Connection bracket	3.82	2.91	1.53	2.3	1



名称	长 L(mm)	宽 W(mm)	高 H(mm)	重量 W(t)	数量 Quantity
1300t吊钩 1300t hook block	3.96	1.685	7.13	38.8	1



名称	长 L(mm)	宽 W(mm)	高 H(mm)	重量 W(t)	数量 Quantity
桅杆9m节 9m mast insert	9.25	2.95	2.63	9.8	1



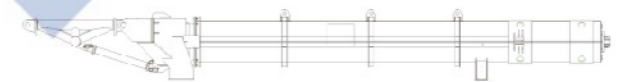
名称	长 L(mm)	宽 W(mm)	高 H(mm)	重量 W(t)	数量 Quantity
车身平衡重箱 Car-body counterweight box	3.01	2.41	1.77	6	2



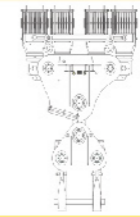
名称	长 L(mm)	宽 W(mm)	高 H(mm)	重量 W(t)	数量 Quantity
变幅平衡重托盘 I Luffing counterweight tray I	10.48	3.48	1.45	26.5	1



名称	长 L(mm)	宽 W(mm)	高 H(mm)	重量 W(t)	数量 Quantity
平衡重变幅装置 Counterweight luffing device	12.26	3.44	1.38	13.3	1



名称	长 L(mm)	宽 W(mm)	高 H(mm)	重量 W(t)	数量 Quantity
1800t吊钩 1800t hook block	5.254	1.648	7.524	60.5	1



名称	长 L(mm)	宽 W(mm)	高 H(mm)	重量 W(t)	数量 Quantity
100t吊钩 100t hook block	1.1	0.72	2.34	5.03	1

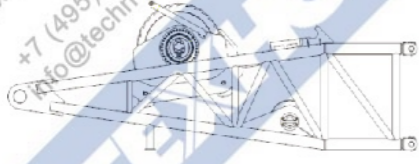


名称	长 L(mm)	宽 W(mm)	高 H(mm)	重量 W(t)	数量 Quantity
桅杆12m节 12m mast insert	12.252	2.95	2.65	12.8	2



# 主要零部件 Main parts

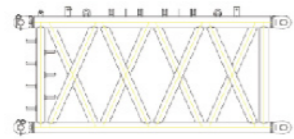
名称	长 L(mm)	宽 W(mm)	高 H(mm)	重量 W(t)	数量 Quantity
桅杆底座 Mast base	9.4	2.87	3.27	39.9	1



名称	长 L(mm)	宽 W(mm)	高 H(mm)	重量 W(t)	数量 Quantity
桅杆吊具 Mast rigging	3.6	1.38	0.36	5	1



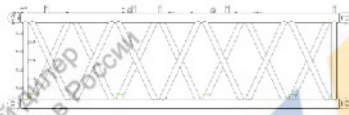
名称	长 L(mm)	宽 W(mm)	高 H(mm)	重量 W(t)	数量 Quantity
主臂6米中间节总成 6m boom insert	6.34	3.498	3.368	11.1	2



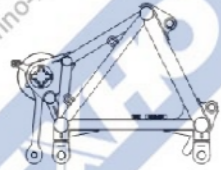
名称	长 L(mm)	宽 W(mm)	高 H(mm)	重量 W(t)	数量 Quantity
主臂9米厚壁中间节总成 9m thick wall boom insert	9.34	3.498	3.368	15.2	3



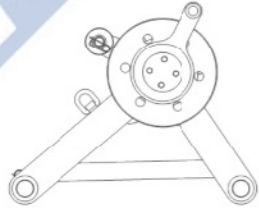
名称	长 L(mm)	宽 W(mm)	高 H(mm)	重量 W(t)	数量 Quantity
主臂12米厚壁中间节总成 12m thick wall boom insert	12.34	3.498	3.368	19.5	2



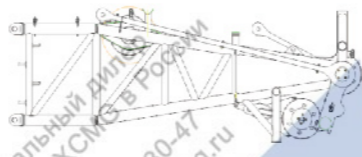
名称	长 L(mm)	宽 W(mm)	高 H(mm)	重量 W(t)	数量 Quantity
主臂1800t臂头 1800t boom head	4.74	3.49	3.41	16.3	1



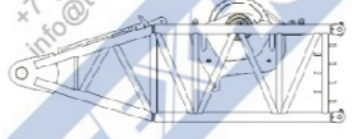
名称	长 L(mm)	宽 W(mm)	高 H(mm)	重量 W(t)	数量 Quantity
主臂大滑轮组 Big pulley block assembly	2.63	2.13	1.85	6.7	2



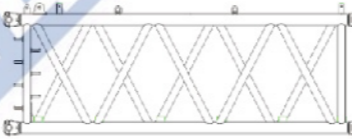
名称	长 L(mm)	宽 W(mm)	高 H(mm)	重量 W(t)	数量 Quantity
超起桅杆顶节臂 Mast top	8.6	3.0	3.03	25.5	1



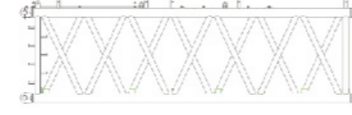
名称	长 L(mm)	宽 W(mm)	高 H(mm)	重量 W(t)	数量 Quantity
主臂底座臂 Boom base	10.57	3.51	3.379	46.6	1



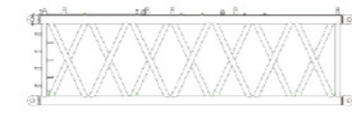
名称	长 L(mm)	宽 W(mm)	高 H(mm)	重量 W(t)	数量 Quantity
主臂9米薄臂中间节总成 9m boom insert	9.34	3.498	3.368	14.3	1



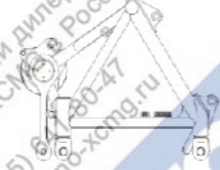
名称	长 L(mm)	宽 W(mm)	高 H(mm)	重量 W(t)	数量 Quantity
主臂12米薄臂中间节总成 12m boom insert	12.34	3.498	3.368	17.9	1



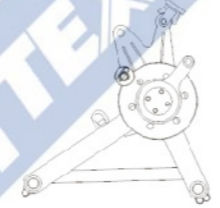
名称	长 L(mm)	宽 W(mm)	高 H(mm)	重量 W(t)	数量 Quantity
主臂12米过渡节总成 12m transition section	12.34	3.498	3.368	19.2	1



名称	长 L(mm)	宽 W(mm)	高 H(mm)	重量 W(t)	数量 Quantity
主臂1300t臂头 1300t boom head	3.56	3.45	3.48	12.3	1

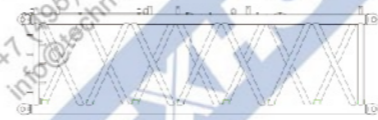


名称	长 L(mm)	宽 W(mm)	高 H(mm)	重量 W(t)	数量 Quantity
主臂小滑轮组 Small pulley block assembly	2.21	2.02	1.83	5.4	2

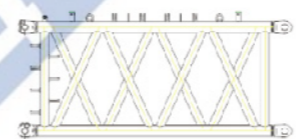


# 主要零部件 Main parts

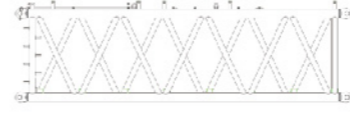
名称	长 L(mm)	宽 W(mm)	高 H(mm)	重量 W(t)	数量 Quantity
轻型臂过渡节总成 Light boom transition section	12.34	3.498	3.368	14.4	1



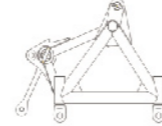
名称	长 L(mm)	宽 W(mm)	高 H(mm)	重量 W(t)	数量 Quantity
塔臂6m节 6m tower jib insert	6.3	3.5	3.08	7.3	2



名称	长 L(mm)	宽 W(mm)	高 H(mm)	重量 W(t)	数量 Quantity
塔臂12m节II 12m tower jib insert II	12.3	3.5	3.43	13.6	3



名称	长 L(mm)	宽 W(mm)	高 H(mm)	重量 W(t)	数量 Quantity
塔臂连接臂头 Tower jib connection jib head	3.63	3.42	3.42	10.3	1



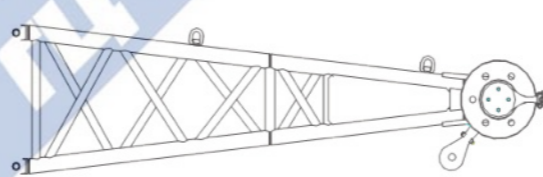
名称	长 L(mm)	宽 W(mm)	高 H(mm)	重量 W(t)	数量 Quantity
塔臂前支架中间节 12m front strut insert	12.22	2.88	1.82	4.5	1



名称	长 L(mm)	宽 W(mm)	高 H(mm)	重量 W(t)	数量 Quantity
塔臂后支架底座臂 Rear strut base	8.26	2.88	2.24	10	1



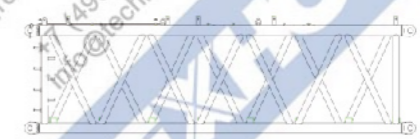
名称	长 L(mm)	宽 W(mm)	高 H(mm)	重量 W(t)	数量 Quantity
塔臂后支架顶节臂 Rear strut top	10.513	1.945	2.39	54.6	2



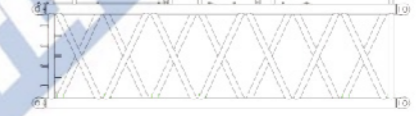
名称	长 L(mm)	宽 W(mm)	高 H(mm)	重量 W(t)	数量 Quantity
塔臂底座臂 Tower jib base	10.37	3.49	3.33	14.6	1



名称	长 L(mm)	宽 W(mm)	高 H(mm)	重量 W(t)	数量 Quantity
塔臂12m节I 12m tower jib insert I	12.3	3.5	3.43	12.3	1



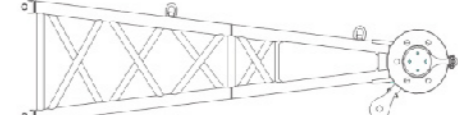
名称	长 L(mm)	宽 W(mm)	高 H(mm)	重量 W(t)	数量 Quantity
塔臂12m节III 12m tower jib insert III	12.3	3.5	3.43	12	3



名称	长 L(mm)	宽 W(mm)	高 H(mm)	重量 W(t)	数量 Quantity
塔臂前支架底座臂 Front strut base	8.79	2.88	1.82	5.6	1



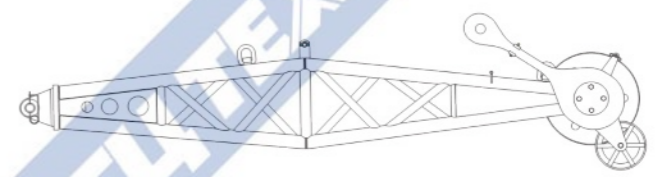
名称	长 L(mm)	宽 W(mm)	高 H(mm)	重量 W(t)	数量 Quantity
塔臂前支架顶节臂 Front strut top	6.73	2.79	1.79	8.9	1



名称	长 L(mm)	宽 W(mm)	高 H(mm)	重量 W(t)	数量 Quantity
塔臂后支架中间节 12m rear strut insert	12.22	2.88	1.97	6.2	1



名称	长 L(mm)	宽 W(mm)	高 H(mm)	重量 W(t)	数量 Quantity
臂端单滑轮 Boom single top	5.76	1.945	2.39	32.7	2





## 详细介绍

# Description On Components And System



## 上车

### 发动机

制造商：奔驰；  
额定功率：480kw/1800rpm；  
最大输出扭矩：2800N.m；  
型式：V型8缸、水冷却、增压中冷、电喷、柴油发动机；  
排放标准：符合欧III A标准。

### 液压系统

双发动机提供动力，每个发动机形成独立的回路，双发动机同时工作时系统功率加倍。采用电比例、闭式、变量、恒功率泵控系统。液压系统由三部分组成：主回路系统，控制系统及辅助系统。  
为方便系统运行状态监控和故障诊断，在液压系统特征点设置测压排气接头，提高产品的使用、维护、维修性能。

### 电气系统

电气系统主要包括如下部分：发动机控制、监测仪表、辅助设备、液压系统控制、力矩限制及安全监控等。电气系统的构成：常规电气系、PLC监控系统及强电系统。  
常规电气系统采用24V并联式回路，各用电设备的接线采用单线制。包括电源、启动控制、发动机控制和状态监测、驾驶室冷暖空调及音响、照明(灯光)、雨刮器、对讲机等。  
PLC监控系统包括主副卷扬、回转、主臂塔臂变幅、左右行走等动作的控制。所有动作全部采用电液比例控制技术，通过PLC逻辑控制，有效地保证主机所有功能的实现，并充分体现以人为本的设计思想。  
控制系统采用进口控制器、力矩限制器、显示器、智能传感器和闭路监控系统。控制器、手柄、显示器通过高速CAN总线通讯连接，信息传递更加安全、快速，保证系统运行可靠性；实时监控发动机及整车状态，根据故障及时提示相应报警信息，使操作更加人性化。  
安全可靠、方便使用的动力电系统，为车辆提供民用电源，保证车内空调、冰箱等电器使用。  
强电系统：配备柴油发电机，提供标准工业电源。

### 起升机构

主副起升机构型号相同，单独驱动，大起重量时两个卷扬同步工作。卷扬采用片式常闭制动器、内藏式减速机、变量马达驱动。主副起升机构采用箱型支架，与转台采用销轴连接，便于组装。钢丝绳均为德国进口不旋转钢丝绳，避免了钢丝绳打绞。

### 变幅机构

主臂变幅采用双联卷筒独立驱动。设有棘轮装置、内藏式减速机、片式常闭制动器。  
塔臂变幅为设有棘轮装置、内藏式减速机、片式常闭制动器。  
桅杆变幅设有棘轮装置、内藏式减速机、片式常闭制动器。

### 回转机构

六个减速机均匀布置在车架的前后两侧，与回转支承外啮合，液压缓冲，具有自由滑转功能。行星减速机，可控常闭、片式制动器，工作可靠，维修方便。



## Crane Superstructure

### Engine System

Manufacturer: Mercedes-Benz,  
Rated output power: 480kw/1800rpm;  
Max. output torque: 2800N.m;  
Type: V-shaped 8-cylinder, water-cooled, turbocharged and inter-cooled, electronic injection, diesel engine;  
Emission: Europe 3rd stage non-road.

### Hydraulic System

Power is offered by two engines, with each formed an independent circuit, and the system power doubled when two engines work at the same time; use electronic proportional closed type variable displacement constant power pump control system. Hydraulic system is divided into 3 parts: main circuit system, control system and auxiliary system.  
To facilitate the monitoring of system running and fault diagnosis, a pressure measuring joint is installed in hydraulic systematic characteristic point to improve the use, maintenance and repair of the product.

### Electric System

Electric system mainly includes: operation control and safety monitoring for engine, instrument, auxiliary equipment, hydraulic system and load moment limiter.  
Electric system composition: conventional electric system and PLC monitoring system.  
Conventional electric system is 24V parallel circuit, the wiring of each electric equipment is single line, including power supply, starter control, engine control and checking, cabin air-condition and acoustics, illumination (lamp), rain wiper, and interphone.  
PLC monitoring system includes the operation control for main/auxiliary winch, slewing gear, boom/tower jib luffing, and left/right crawler travel. All movements use electro-hydraulic proportional control technology, and with PLC logic control, efficiently ensure the realization of all functions, and fully embody the design concept of people first.  
Control system adopts imported controller, load moment limiter, display, intelligent sensor and closed circuit monitor system. Controller, joystick and display are connected through high-speed CAN bus for safe and fast information transmission, and to guarantee systematic reliability; real-time monitoring of engine and overall crane work, and indication of warning information according to fault prompt, make ergonomic operation.  
Safe, reliable and easy power electrical system provides civil power source for the vehicle, and ensure the indoor use of air-conditioner, refrigerator and electrical equipment.  
Strong electrical system: equipped with diesel generator to provide standard industrial power source.

### Hoist winch

Main/auxiliary hoist winch has same model and with independent drive, two winches can work synchronously for lifting heavy load, with disc type constant closed brake, built-in speed reducer and variable displacement motor for drive; main/auxiliary hoist winch has box-type bracket, connected with turntable by pin shaft, easy for assembly; wire rope is anti-twisting rope imported from Germany to prevent wire rope from twisting.

### Boom luffing winch

Boom luffing winch is a twin drum independent drive unit, with ratchet locking device, built-in speed reducer, and disc type constant closed brake.  
Tower jib luffing winch has ratchet locking device, built-in speed reducer, and disc type constant closed brake.  
Mast luffing winch has ratchet locking device, built-in speed reducer, and disc type constant closed brake.

### Slewing gear

Six slewing speed reducers are uniformly arranged at front and rear sides of turntable, and externally meshed with slewing ring, with free-swing function; planetary reducer has controllable constant-closed disc brake, reliable work and easy maintenance.



## 详细介绍

# Description On Components And System

### 回转支承

回转支承为罗特艾德公司产品，六排滚柱结构，质量稳定可靠。强度高、承载力矩大，维修、保养方便。

### 转台

转台采用前后分体式结构，降低了单件运输重量。转台通过回转支承连接盘与六排滚柱回转支承和车架相连，实现上下车用液压动力销拆装分体，360°回转。

### 桅杆

人字架采用箱型结构，桅杆采用桁架式结构，整体稳定性好。人字架配置顶升机构，桅杆配置液压自动控制防后倾机构。

### 司机室

宽敞的操纵室配置冷暖空调、音响、无线调制解调器、冰箱、衣柜、工作平台、可折叠卧铺和折叠座椅等基本生活工作用具，环境舒适。操纵室内装有全套操纵仪表和控制装置，时刻监控起重机工作状态。



## 下车

下车包括车架、连接梁、履带架、行走机构和车身配重。连接梁和车架、履带架采用销轴铰接式连接，销轴安装通过液压缸完成。

### 车架

车架采用高强度钢板、箱型结构，中间设置横隔板，加强其抗扭刚度，结构简单，承载能力强，刚性好。

### 连接梁

连接梁采用箱型结构，和车架、履带架采用销轴连接，中间设置横隔板。

### 履带架

包括履带梁和四轮一带。履带梁采用箱型三分体结构降低运输重量，和车架连接部位局部加强，中间设置横隔板。

### 行走机构

两个履带梁对称设置，装有宽度为2m的履带板，可同步操作，也可单独操纵，以实现直行和转弯。每个履带由2个行走减速机驱动，行走驱动采用德国进口的内藏式行星齿轮减速机，液压释放行走制动器，每个减速机由两个德国进口的轴向柱塞变量马达驱动。

### Slewing ring

Slewing ring is 6-row roller type slewing ring made by Rothe Erde, Germany, with stable and reliable quality, high strength, heavy load capacity, and easy maintenance.

### Turntable

Turntable is front and rear split-type structure to reduce single part transport weight, and connected with six-row roller slewing ring and car-body by slewing ring connection disc to achieve connection of superstructure and undercarriage with hydraulic power pin for split-type assembly/disassembly, and 360° slewing.

### Mast

Gantry is box-type structure and mast is lattice type structure, with good overall stability; gantry is equipped with raising mechanism, and mast equipped with hydraulic controlled backstop device.

### Operator's cabin

Spacious and comfortable, equipped with air conditioner, acoustics, wireless modem, refrigerator, cloth chest, work platform, folding berth and seat, which convenient and comfortable for work and operation; Operator's cabin has a complete set of control instrument and equipment for real-time monitoring crane work and operation.



## Crane Carrier

Crane undercarriage consists of carbody, connection beam, track frame, travel unit and carbody counterweight. The carbody and track frame is articulated connection by pin shaft, and pin shaft installation is completed by hydraulic cylinder.

### Carbody

Carbody is made of high-strength steel and welded in box type structure, with cross panel installed in the middle to strengthen its stiffness against torsion, simple structure, high loading capacity and good rigidity.

### Connection beam

Connection beam is box-type structure, connected with carbody and track frame by pin shaft, with cross panel installed in the middle of it.

### Track frame

Track frame consists of four track rollers and one track shoe, the track frame is box-type structure of three-part-split to reduce transport weight, the connection place to frame is partially strengthened, with cross panel installed in the middle of it.

### Crawler travel unit

Two track frames are symmetrically arranged, with track shoe of 2m width, can be operated synchronously or independently to achieve straight travel and turning around. Each track frame is driven by two travel reducers, and the travel drive unit has German imported built-in planetary reducer and hydraulic release service brake, each reducer is driven by two German imported axial piston variable displacement motors.



## 详细介绍

# Description On Components And System

### 配重

车身配重共10块，每块10吨，分别安装在车架前后的配重箱内。  
转台配重共330吨。配重托盘1个，重量20吨；左右配重各13个，每个重量10吨，转台尾部中间放置5块。  
超起配重共800吨。底座1个，重量30吨；配重77个，每个重量10吨。  
具体自重、数量如下：

名称	车身配重	车身配重箱	转台配重托盘	转台配重	超起配重托盘I	超起配重
自重 (t)	10	5	20	10	30	10
数量	10	2	1	31	1	77

### 集中润滑系统

德国递进式集中润滑系统，电脑编程控制，能够自动、逐点加注润滑油，保证各润滑点油料充足，使车辆保养更加轻松、方便。

### 安全保护措施

安全装置包括力矩限制器、转台回转锁销装置、起重臂防后翻装置、起升高度限位装置、风速仪、水平仪、液压系统的溢流阀、平衡阀、双向液压锁、回转警告、行走警告等。

### 多方位操作平台

当系统操作手柄出现故障时，可通过能显示车辆关键信息的无线遥控系统来完成车辆相应动作。

### 力矩限制器

检测功能：力矩限制器能自动检测出起重臂的角度、起重载荷。  
显示功能：大屏幕的液晶显示器，以中文和图形方式显示力矩百分比、实际起重重量、额定起重重量、幅度、吊臂长度、角度、最大起升高度、工况代码、倍率、限制角度、信息代码等起重作业参数。  
警告功能：具有完整的预先报警、超载停止作业功能。如果检测到实际载荷超过额定载荷，起重臂超过极限角度，力矩限制器发出报警并限制当前动作。系统具有故障自诊断功能。

### 主、副提升过卷装置

当主、副卷扬起升到一定高度时候，显示器上的过卷保护指示灯亮，同时力矩限制器停止起升升动作。

### 主、副提升过放装置

此保护功能由安装再卷筒内部接近开关检测到卷筒上的钢丝绳剩下三圈时候，仪表盘上的指示灯亮，同时力矩限制器自动停止起升升动作。

### Counterweight

Carbody counterweight is total 10 slabs, with each weights 10t, and installed respectively in counterweight case at front and rear of the carbody.  
Turntable counterweight is total 330t, with one counterweight tray weights 20t, 13 pcs counterweights at both left side and right, with each weights 10t, and 5 slabs placed at the middle of counterweight tail.  
Superlift counterweight is total 800t, with one counterweight basement weights 30t, counterweight slabs 77 pieces, and each weights 10t.  
The dead weight and number of the counterweight:

Name	Carbody counterweight	Carbody counterweight case	Turntable counterweight tray	Turntable counterweight	Superlift counterweight tray I	Superlift counterweight
Deadweigh (t)	10	5	20	10	30	10
Number	10	2	1	31	1	77

### Centralized Lubrication System

The centralized lubrication system is a progressive lubrication system imported from Germany, with computer programming, can automatically point-to-point lubricate grease, ensure each lubrication point with enough grease, and make vehicle maintenance easy and relaxed.

### Safety Protection Devices

The safety protection devices comprise: load moment limiter, turntable lock pin, boom backstop, hoist limit switch, anemometer, level gauge, hydraulic system overflow valve, counterbalance valve, two-way hydraulic lock, slewing warning indicator and travel warning indicator, etc.

### Multi-position operation platform

Where this is error in system operation lever, the corresponding movement of crane can be finished through the wireless remote control system which shows the crucial information of crane.

### Load moment limiter

Detection function: automatically detect boom angle and lifting load.  
Display function: real time display crane operation data such as load moment percentage, actual lifting load, rated lifting load, working radius, boom length, boom angle, lifting height, mode code, parts of line, limit angle and information code.  
Warning function: automatically send out warning and stop crane operation when detecting actual lifting load exceeds total rated lifting load and boom out of limit angle.  
The system also has self diagnosis function.

### Main/Auxiliary winch over-wound protection device

When main/auxiliary winch hoists up to a certain lifting height, an over-wound warning lamp on instrument panel lights on, at the same time, load moment limiter stops crane hoisting up operation.

### Main/Auxiliary winch over-release protection device

This protection function is detected by the approach switch in drum when the rope on drum is left 3 loops, the indicating lamp on the instrument panel is light, meanwhile, LML automatically stops raising and lowering movements.



## 详细介绍

# Description On Components And System

### 安全保护开关

该安全保护开关放在手柄前侧，此开关没有按下的时候，所有动作信号被屏蔽，手柄不起作用。防止上下车身体碰撞手柄产生误操作。

### 棘爪锁止装置

该功能用于锁定变幅卷扬，起重臂降落的时候必须打开该装置，否则不能降落，用于保护臂架在非工作时安全停放，棘轮状态在显示器内示出。

### 起重臂角度限制

主起重臂仰角达到最大角度极限时，起重臂被停止起升；主起重臂在幅度超出工作范围时停止起重臂落。  
塔臂由限位开关控制上限位和下限位。

### 监控系统

由7个摄像头和2个监视器组成，分别监视主、副卷扬、主变幅卷扬、塔臂变幅卷扬、桅杆变幅卷扬、超起配重及吊钩，系统根据所选动作自动切换相应视频图像，更加方便直观。

### 声光报警器

在履带起重机移动或做回转动作的时候灯闪烁并且发出声音报警。

### 三色力矩报警

力矩器三色报警有三种颜色组成，负载在90%以下时“绿灯”亮，表示起重机在安全区域运行；负载在90%~100%时“黄灯”亮，表示起重机在已接近额定载重范围。负载高于100%时，“红灯”亮，表示起重机已经超载，在危险区域，控制系统自动切断起重机向危险的方向运行。

### 照明灯

装置在转台前后方、卷扬监控系统和操纵室内等处，用于夜间工作提供照明。

### 示高灯

安装在臂架顶部，作为高空警告。

### 风速仪

实时检测当前风速，传送到操纵室的监视器上，提醒司机操作的安全性。风速仪为赫斯曼进口，性能更稳定，测速更准确。

### Safe protection switch

At the front of joystick installed a safe protection switch, when the switch is pressed down, all crane movement signals have been shielded, and the joystick is useless. This switch can be used to prevent malfunction when operator accessing the cabin and touching the joystick.

### Winch ratchet locking device

This function is used to lock luffing winch, it must be open when boom is lowering, otherwise boom cannot be lowered, it is used to protect boom safe placement under non working condition, the state of ratchet lock is displayed in the display.

### Boom angle limit

When boom angle reach its ultimate, boom is stopped raising up; main lifting boom stops raising up/lowering when the radius exceeds its range.  
Tower jib limit switch control its upper and lower limit position.

### Monitor system

The monitor system contains 7 cameras and 2 monitor displays, respectively keeping watch on main/auxiliary winch, tower jib luffing winch, superlift luffing winch and superlift counterweight and hook blocks, the system automatically switch the video images of corresponding movements, it's more convenient and visible.

### Audio/Video warning

When crawler crane is moving and slewing, there is light and sound for warning.

### Load moment tricolor warning lamp

The lamp comprises 3 colors, when crane loading is below 90% of total rated lifting load, "Green Lamp" lights on to indicate crane is running in safety area; when crane loading is in 90%~100% of total rated lifting load, "Yellow Lamp" lights on to indicate crane is close to total rated lifting load; when crane loading is above 100%~102% of total rated lifting load, "Red Lamp" and "Yellow Lamp" light on at the same time to indicate crane is overload; In dangerous area, control system can automatically cut off crane movement to dangerous direction.

### Illumination lamp

There are illumination lamps at front of turntable, on boom and inside operator's cabin for night operation.

### Height mark lamp

The boom tip has a height mark lamp for high level operation warning.

### Anemometer

Anemometer at boom head can detect current wind speed and send wind signal to a monitor in operator's cabin to alert operator for safe operation. Anemometer is imported from Hirschmann, Germany, with stable performance and accurate measurement.



## 详细介绍

# Description On Components And System

### 配重

车身配重共10块，每块10吨，分别安装在车架前后的配重箱内。  
转台配重共330吨。配重托盘1个，重量20吨；左右配重各13个，每个重量10吨，转台尾部中间放置5块。  
超起配重共800吨。底座1个，重量30吨；配重77个，每个重量10吨。  
具体自重、数量如下：

名称	车身配重	车身配重箱	转台配重 托盘	转台配重	超起配重 托盘1	超起配重
自重(t)	10	5	20	10	30	10
数量	10	2	1	31	1	77

### 集中润滑系统

德国进口集中润滑系统，电脑编程控制，能够自动、逐点加注润滑油，保证各润滑点油料充足，使车辆保养更加轻松、方便。

### 安全保护措施

安全装置包括力矩限制器、转台回转锁紧装置、起重臂防后翻装置、起升高度限位装置、风速仪、水平仪、液压系统的溢流阀、平衡阀、双向液压锁、回转警告、行走警告等。

### 多方位操作平台

当系统操作手柄出现故障时，可通过能显示车辆关键信息的无线遥控系统来完成车辆相应动作。

### 力矩限制器

检测功能：力矩限制器能自动检测出起重臂的角度、起重载荷。  
显示功能：大屏幕的液晶显示器，以中文和图形方式显示力矩百分比、实际起重重量、额定起重重量、幅度、吊臂长度、角度、最大起升高度、工况代码、倍率、限制角度、信息代码等起重作业参数。  
警告功能：具有完整的预先报警、超载停止作业功能。如果检测到实际载荷超过额定载荷，起重臂超过极限角度，力矩限制器发出报警并限制当前动作。系统具有故障自诊断功能。

### 主、副提升过卷装置

当主、副卷扬起升到一定高度时候，显示器上的过卷保护指示灯亮，同时力矩限制器停止起升动作。

### 主、副提升过放装置

此保护功能由安装再卷筒内部接近开关检测到卷筒上的钢丝绳剩下三圈时候，仪表盘上的指示灯亮，同时力矩限制器自动停止起升动作。

### Counterweight

Carbody counterweight is total 10 slabs, with each weights 10t, and installed respectively in counterweight case at front and rear of the carbody.  
Turntable counterweight is total 330t, with one counterweight tray weights 20t; 13 pcs counterweights at both left side and right, with each weights 10t; and 5 slabs placed at the middle of counterweight tail.  
Superlift counterweight is total 800t, with one counterweight basemnt weights 30t; counterweight slab is 77 pieces, and each weights 10t.  
The dead weight and number of the counterweight:

Name	Carbody counterweight	Carbody counterweight case	Turntable counterweight tray	Turntable counterweight	Superlift counterweight tray 1	Superlift counterweight
Dead weight	10	5	20	10	30	10
Number	10	2	1	31	1	77

### Centralized Lubrication System

The centralized lubrication system is a progressive lubrication system imported from Germany, with computer programming, can automatically point-to-point lubricate grease, ensure each lubrication point with enough grease, and make vehicle maintenance easy and relaxed.

### Safety Protection Devices

The safety protection devices comprise: load moment limiter, turntable lock pin, boom backstop, hoist limit switch, anemometer, level gauge, hydraulic system overflow valve, counterbalance valve, two-way hydraulic lock, slewing warning indicator and travel warning indicator, etc.

### Multi-position operation platform

Where this is error in system operation lever, the corresponding movement of crane can be finished through the wireless remote control system which shows the crucial information of crane.

### Load moment limiter

Detection function: automatically detect boom angle and lifting load.  
Display function: real time display crane operation data such as load moment percentage, actual lifting load, rated lifting load, working radius, boom length, boom angle, lifting height, mode code, parts of line, limit angle and information code.  
Warning function: automatically send out warning and stop crane operation when detecting actual lifting load exceeds total rated lifting load and boom out of limit angle.  
The system also has self diagnosis function.

### Main/Auxiliary winch over-wound protection device

When main/auxiliary winch hoists up to a certain lifting height, an over-wound warning lamp on instrument panel lights on, at the same time, load moment limiter stops crane hoisting up operation.

### Main/Auxiliary winch over-release protection device

This protection function is detected by the approach switch in drum when the rope on drum is left 3 loops, the indicating lamp on the instrument panel is light, meanwhile, LML automatically stops raising and lowering movements.



## 详细介绍

# Description On Components And System

### 安全保护开关

该安全保护开关放在手柄前侧，此开关没有按下的时候，所有动作信号被屏蔽，手柄不起作用。防止上下车身体碰撞手柄产生误操作。

### 棘爪锁止装置

该功能用于锁定变幅卷扬，起重臂降落的时候必须打开该装置，否则不能降落，用于保护臂架在非工作时安全停放，棘轮状态在显示器内示出。

### 起重臂角度限制

主起重臂仰角达到最大角度极限时，起重臂被停止起升；主起重臂在幅度超出工作范围时停止起重臂降。塔臂由限位开关控制上限位和下限位。

### 监控系统

由7个摄像头和2个监视器组成，分别监视主、副卷扬、主变幅卷扬、塔臂变幅卷扬、桅杆变幅卷扬、超起配重及吊钩，系统根据所选动作自动切换相应视频图像，更加方便直观。

### 声光报警器

在履带起重机移动或做回转动作的时候灯闪烁并且发出声音报警。

### 三色力矩报警

力矩器三色报警有三种颜色组成，负载在90%以下时“绿灯”亮，表示起重机在安全区域运行；负载在90%~100%时“黄灯”亮，表示起重机在已接近额定载荷范围。负载高于100%时，“红灯”亮，表示起重机已经超载，在危险区域，控制系统自动切断起重机向危险的方向运行。

### 照明灯

安装在转台前、后、变幅监控系统及操纵室内等处，用于夜间工作提供照明。

### 示高灯

安装在臂架顶部，作为高空警示。

### 风速仪

实时检测当前风速，传送到操纵室的监视器上，提醒司机操作的安全性。风速仪为赫斯曼进口，性能更稳定，测速更准确。

### Safe protection switch

At the front of joystick installed a safe protection switch, when the switch is pressed down, all crane movement signals have been shielded, and the joystick is useless. This switch can be used to prevent malfunction when operator accessing the cabin and touching the joystick.

### Winch ratchet locking device

This function is used to lock luffing winch, it must be open when boom is lowering, otherwise boom cannot be lowered, it is used to protect boom safe placement under non working condition, the state of ratchet lock is displayed in the display.

### Boom angle limit

When boom angle reach its ultimate, boom is stopped raising up; main lifting boom stops raising up/lowering when the radius exceeds its range. Tower jib limit switch control its upper and lower limit position.

### Monitor system

The monitor system contains 7 cameras and 2 monitor displays, respectively keeping watch on main/auxiliary winch, tower jib luffing winch, superlift luffing winch and superlift counterweight and hook blocks, the system automatically switch the video images of corresponding movements, it's more convenient and visible.

### Audio/Video warning

When crawler crane is moving and slewing, there is light and sound for warning.

### Load moment tricolor warning lamp

The lamp comprises 3 colors, when crane loading is below 90% of total rated lifting load, "Green Lamp" lights on to indicate crane is running in safety area; when crane loading is in 90%~100% of total rated lifting load, "Yellow Lamp" lights on to indicate crane is close to total rated lifting load; when crane loading is above 100%~102% of total rated lifting load, "Red Lamp" and "Yellow Lamp" light on at the same time to indicate crane is overload; In dangerous area, control system can automatically cut off crane movement to dangerous direction.

### Illumination lamp

There are illumination lamps at front of turntable, on boom and inside operator's cabin for night operation.

### Height mark lamp

The boom tip has a height mark lamp for high level operation warning.

### Anemometer

Anemometer at boom head can detect current wind speed and send wind signal to a monitor in operator's cabin to alert operator for safe operation. Anemometer is imported from Hirschmann, Germany, with stable performance and accurate measurement.



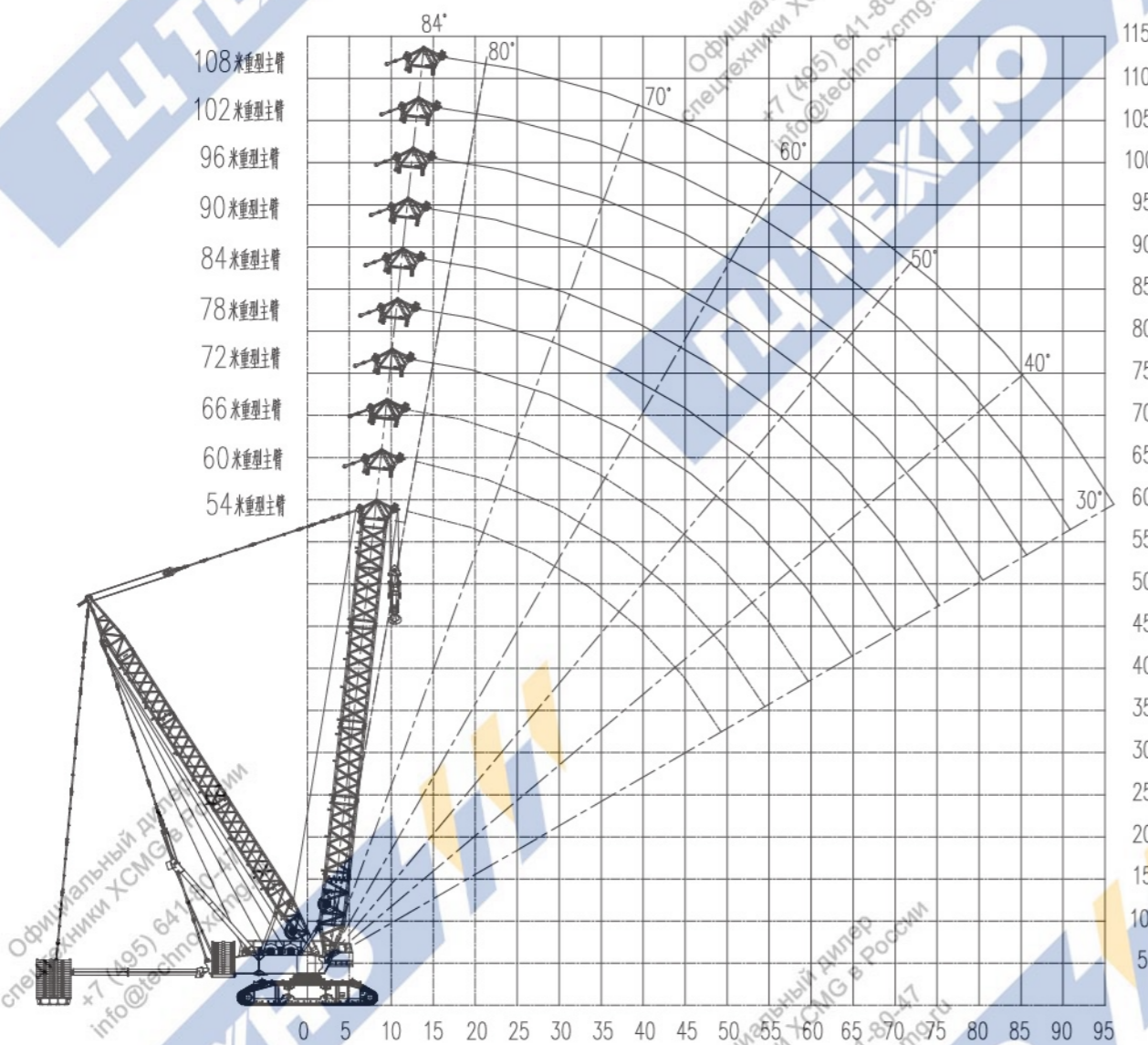


# 重型主臂作业范围 Heavy Boom Working Range



# 重型主臂起重性能表 Heavy boom lifting performance table

Официальный дилер спецтехники XCMG в России  
+7 (495) 641-80-47  
info@techno-xcmg.ru



Официальный дилер спецтехники XCMG в России  
+7 (495) 641-80-47  
info@techno-xcmg.ru

Официальный дилер спецтехники XCMG в России  
+7 (495) 641-80-47  
info@techno-xcmg.ru

Официальный дилер спецтехники XCMG в России  
+7 (495) 641-80-47  
info@techno-xcmg.ru

主臂长度54~108 m, 超起平衡重800t, 超起平衡重半径30m  
Boom length 54~78m, superlift counterweight 800t, superlift counterweight radius 30m.

臂长 Boom length	54	60	66	72	78	84	90	96	102	108
幅度 Radius										
10	2000	1641								
12	2000	1638	1493	1402	1242					
14	1710	1700	1491	1402	1242	1103	981	859	713	
16	1632	1622	1488	1402	1242	1103	981	859	713	611
18	1420	1415	1484	1385	1242	1103	981	859	713	611
20	1277	1272	1269	1266	1219	1097	981	850	710	611
22	1159	1154	1151	1148	1194	1081	973	845	710	610
24	1059	1055	1052	1049	1045	1066	964	840	710	608
26	975	970	967	964	961	964	953	830	710	605
28	903	898	895	892	889	892	888	825	709	600
30	839	835	832	829	825	828	825	820	708	595
34	735	730	727	724	721	761	721	717	705	592
38	657	647	644	641	638	672	670	666	662	590
42	555	603	577	574	571	599	599	593	590	587
46	469	518	521	518	515	539	538	534	530	527
50	391	443	482	496	468	488	486	482	478	475
54		376	417	447	449	444	443	438	435	431
58			360	392	412	407	406	400	397	393
62				342	368	374	373	368	363	361
66					324	343	345	339	336	332
70					283	305	320	315	311	307
74						268	290	292	288	284
78							258	269	268	265
82								240	251	246
86									213	225
90										201
94										189

Официальный дилер спецтехники XCMG в России  
+7 (495) 641-80-47  
info@techno-xcmg.ru

Официальный дилер спецтехники XCMG в России  
+7 (495) 641-80-47  
info@techno-xcmg.ru

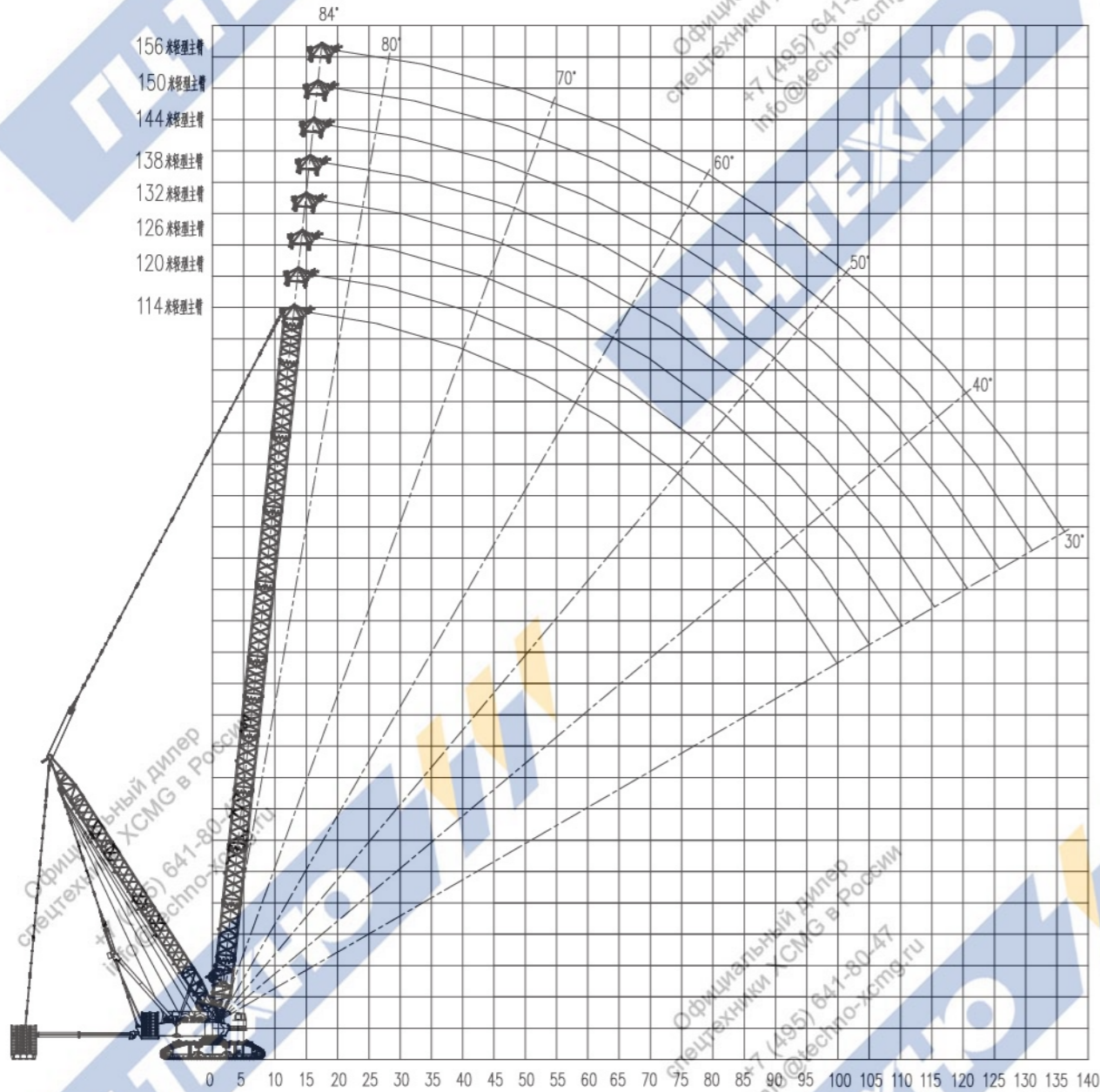


# 轻型主臂作业范围 Light Boom Working Range



# 轻型主臂起重性能表 Light boom lifting performance table

330t转台平衡重+111t车身平衡重+800t超起平衡重, 超起平衡重半径30m  
Turntable counterweight 330t + carbody counterweight 111t + superlift counterweight 800t, superlift counterweight radius 30m.



幅度 Radius	臂长 Boom length	114	120	126	132	138	144	150	156
16		584	519	451					
18		584	519	451	404	365	327	296	
20		584	519	451	404	365	327	296	265
22		584	518	450	404	365	327	296	265
24		584	518	450	404	365	327	296	264
26		584	518	450	404	365	327	296	264
28		580	514	447	403	365	327	296	263
30		572	507	441	401	365	327	295	263
34		559	492	428	398	361	324	293	260
38		544	478	416	395	356	321	290	257
42		530	463	403	391	351	317	287	254
46		482	450	391	388	347	313	285	251
50		435	431	375	378	342	309	282	247
54		395	393	357	363	337	306	279	244
58		360	358	338	339	329	299	273	241
62		331	329	313	311	309	288	265	236
66		305	302	302	286	284	278	258	231
70		281	279	279	263	261	260	250	225
74		260	258	258	244	242	240	240	219
78		243	239	240	237	224	223	223	213
82		226	224	224	221	208	207	207	206
86		211	209	209	206	194	192	192	192
90		197	195	195	192	190	179	179	179
94		184	183	183	180	177	167	167	167
98		166	171	171	168	166	157	156	156
102		148	155	161	158	155	147	146	146
106			140	148	148	146	137	137	136
110				133	138	138	129	129	128
114					125	128	121	121	120
118						117	114	114	112
122						104	103	107	106
126							93	99	100
130								89	91
134									82
138									73

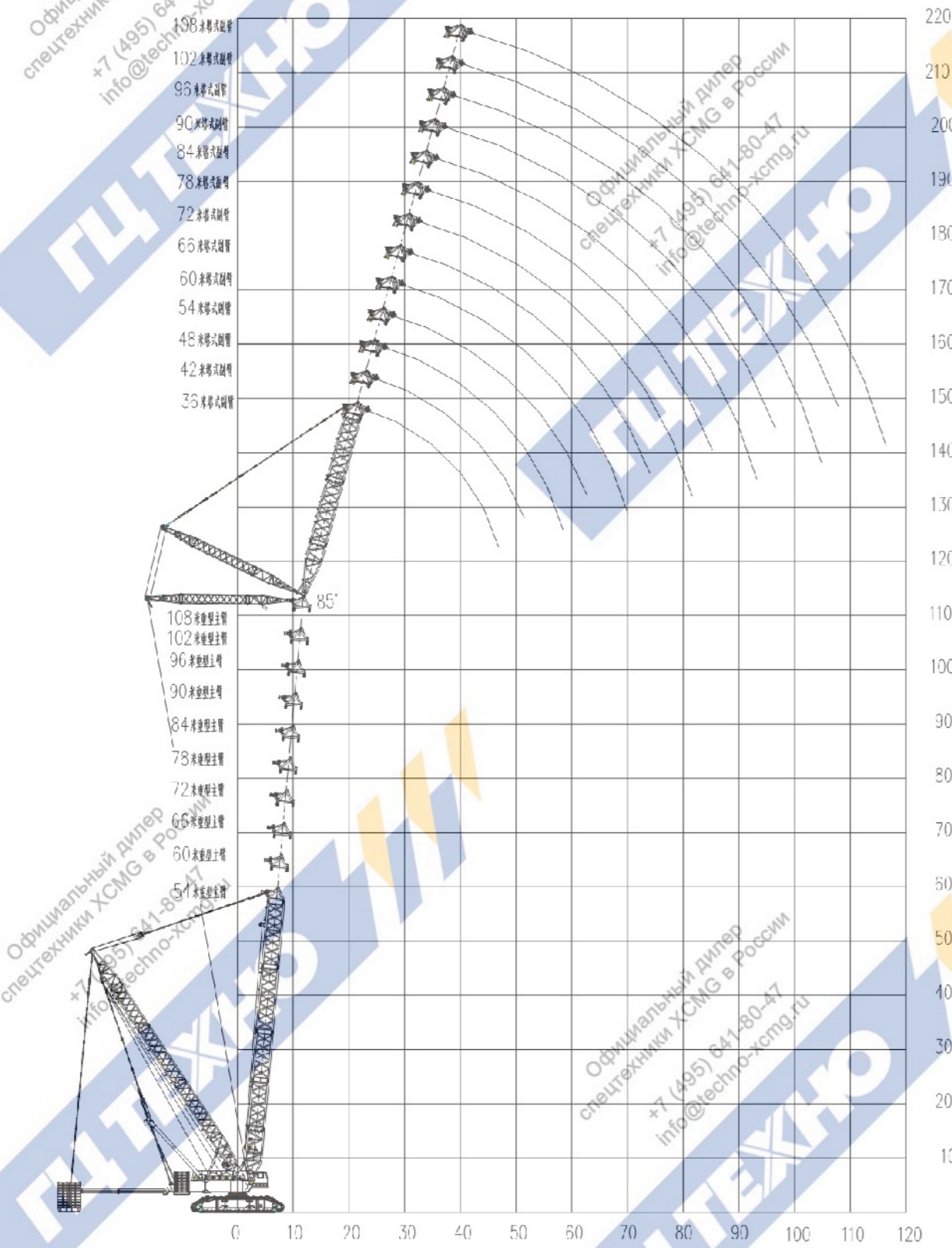


# 塔式副臂作业范围 Tower jib Working Range



# 塔式副臂起重性能表 Tower jib lifting performance table

Официальный дилер спецтехники XCMG в России  
+7 (495) 641-80-47  
info@techno-xcmg.ru



Официальный дилер спецтехники XCMG в России  
+7 (495) 641-80-47  
info@techno-xcmg.ru

Официальный дилер спецтехники XCMG в России  
+7 (495) 641-80-47  
info@techno-xcmg.ru

Официальный дилер спецтехники XCMG в России  
+7 (495) 641-80-47  
info@techno-xcmg.ru

主臂长度54m, 主臂角度85°, 超起平衡重半径30m, 超起平衡重480t  
Boom length 54m, boom angle 85°, SL counterweight radius 30m, SL counterweight weight 480t

主臂54m													
塔臂长度 (m) Tower jib length	36m	42m	48m	54m	60m	66m	72m	78m	84m	90m	96m	102m	108m
幅度 Radius													
24	733*												
26	711	654*											
28	691	637	583*										
30	623	621	570	520*									
32	565	583	556	510*	464*								
34	517	533	543	501	433*	409*							
36	476	489	511	491	413*	404*	341*						
38	440	453	472	481	395*	376*	334*	303.45*					
40	388*	420	439	450	377*	360*	333*	301.35*	259*				
42	338*	392	409	419	360*	345*	332*	298.2*	250*	236.25*			
44		368	382	392	344*	331*	325*	281*	240*	235.2*	212.1*		
46		320*	359	368	329*	324*	308*	277*	239*	234.15*	211.05*	178.5*	
48		282*	319	346	315	308*	298*	269*	239*	233.1*	210*	178.5*	161.7*
50			293*	325	302	296*	292*	259*	239*	231*	208.95*	177.45*	160.65*
52			266*	290	289	284	280*	248*	238*	229.95*	207.9*	176.4*	159.6*
54			237*	269*	277	273	269	243*	238*	217*	206.85*	175.35*	158.55*
56				249*	261	262	259	237*	233*	215*	204.75*	174.3*	157.5*
58				228*	244	262	257	224*	221*	213*	194*	173.25*	156.45*
60					227*	249	235	213*	220.5*	204*	192*	172.2*	156.45*
62					211*	224	222*	203*	208.95*	199*	191*	171.15*	155.4*
64					194*	210*	209*	202.65*	199.5*	191*	187*	170.1*	154.35*
66						196*	196*	193.2*	190.05*	182*	179*	161*	153.3*
68						182*	185*	184.8*	181.65*	180*	171*	159*	152.25*
70						168*	173*	176.4*	173.25*	174.3*	169*	158*	151.2*
72							162*	161*	164.85*	165.9*	162.75*	154*	150.15*
74							150*	154*	158.55*	159.6*	155.4*	147*	142*
76							138*	147*	151.2*	152.25*	149.1*	147*	137*
78							139*	138*	145.95*	142.8*	140.7*	135*	
80							129*	132*	133*	136.5*	135.45*	131.25*	
84								118*	123*	119*	123.9*	120.75*	
88									101*	109*	110*	108*	105*
92										94*	98*	100*	97*
96											86*	89*	89*
100												78*	79*
104												67*	69*
108													60*

Официальный дилер спецтехники XCMG в России  
+7 (495) 641-80-47  
info@techno-xcmg.ru

Официальный дилер спецтехники XCMG в России  
+7 (495) 641-80-47  
info@techno-xcmg.ru

Официальный дилер спецтехники XCMG в России  
+7 (495) 641-80-47  
info@techno-xcmg.ru



# 塔式副臂起重性能表

## Tower jib lifting performance table

主臂长度66m, 主臂角度85°, 超起平衡重半径30m, 超起平衡重480t  
 Boom length 66m, boom angle 85°, SL counterweight radius 30m, SL counterweight weight 480t

主臂66m													
塔臂长度 (m) Tower jib length	36m	42m	48m	54m	60m	66m	72m	78m	84m	90m	96m	102m	108m
幅度 Radius													
24	638*												
26	621*	569*											
28	602*	555*	502*										
30	585	541*	497*	451*									
32	569	527	486*	448*	405*								
34	539	515	474*	439*	402*	332.85*							
36	494	502	464	430*	395*	329.7*	299.25*						
38	455	470	454	422	362*	325.5*	298.2*	268.8*					
40	422	434	443	412	353*	319.2*	294*	267.75*	230*				
42	372*	404	422	404	339*	312.9*	290.85*	264.6*	230*	214.2*			
44		378	394	396	323*	306.6*	286.65*	262.5*	228*	214.2*	192.15*		
46		354	369	381	310*	299.25*	282.45*	258.3*	226*	213.15*	192.15*	156*	
48		308*	347	358	296*	279*	278.25*	255.15*	224*	211.05*	191.1*	156*	141*
50			327	338	284*	272*	261*	252*	210*	208.95*	190.05*	155*	141*
52			285	319	272*	266*	257*	237*	207*	206.85*	189*	154*	140*
54			258*	284	261*	257*	253*	234*	203*	204.75*	186.9*	154*	139*
56				264	250*	247*	243*	229*	194*	202.65*	184.8*	153*	138*
58				243*	240*	237*	234*	220*	190*	191*	183.75*	152*	138*
60				222*	231	228*	226*	210*	183*	189*	181.65*	151*	137*
62					222	218*	217*	202*	175*	185*	171*	150*	136*
64					207*	208*	210*	194*	169*	181*	169*	148*	135*
66					189*	199*	200*	187*	161*	177*	165*	147*	134*
68						189*	191*	180*	155*	171*	161*	146*	133*
70						176*	182*	173*	148*	164*	158*	145*	132*
72						162*	171*	167*	142*	160*	157*	144*	131*
74							159*	161*	125*	154*	150*	141*	130*
76							148*	155*	108*	148*	147*	138*	129*
78							135*	147*	100*	145*	141*	135*	128*
80								137*	100*	140*	138*	130*	123*
84									129*	127*	120*	118*	
88									115*	116*	114*	111*	
92									100*	103*	105*	104*	
96										91*	94*	93*	
100											78*	83*	83*
104												72*	74*
108													64*
112													54*



# 塔式副臂起重性能表

## Tower jib lifting performance table

主臂长度78m, 主臂角度85°, 超起平衡重半径30m, 超起平衡重480t  
 Boom length 78m, boom angle 85°, SL counterweight radius 30m, SL counterweight weight 480t

主臂78m														
塔臂长度 (m) Tower jib length	36m	42m	48m	54m	60m	66m	72m	78m	84m	90m	96m	102m	108m	
幅度 Radius														
26	530*													
28	516*	476*												
30	502*	465*	427*											
32	487*	454*	418*	352.8*										
34	473*	442*	409*	346.5*	318.15*									
36	458	430*	400*	340.2*	312.9*	286.65*								
38	447	418*	389*	332.85*	307.65*	282.45*	259.35*							
40	437	407	380*	326.55*	302.4*	278.25*	256.2*	233.1*						
42	405	397	371	319.2*	296.1*	274.05*	253.05*	231*	210*					
44	353	388	361	311.85*	290.85*	269.85*	248.85*	228.9*	208.95*	178*				
46		364	354	305.55*	284.55*	264.6*	245.7*	225.75*	205.8*	177*	160*			
48		341	346	298.2*	266*	259.35*	241.5*	222.6*	203.7*	176*	160*	140*		
50		294*	335	291.9*	260*	254.1*	238.35*	219.45*	201.6*	175*	159*	139*	126*	
52			316	285.6	252*	238*	234.15*	216.3*	199.5*	173*	157*	139*	125*	
54			276	279.3	242*	233*	229.95*	213.15*	196.35*	171*	156*	138*	125*	
56			247*	267.75	232*	228*	216*	210*	194.25*	169*	154*	137*	124*	
58				254.1	223*	219*	212*	197*	191.1*	167*	153*	136*	123*	
60				235.2	214*	211*	208*	194*	189*	165*	151*	135*	122*	
62				203*	206*	203*	201*	189*	177*	163*	150*	134*	122*	
64					198*	195*	194*	186*	175*	159*	148*	133*	121*	
66					191*	188*	186*	179*	169*	156*	146*	131*	119*	
68						181*	180*	173*	161*	149*	144*	130*	118*	
70						175*	170*	163*	158*	145*	140*	129*	117*	
72						166*	166*	157*	150*	139*	137*	128*	116*	
74							159*	151*	147*	136*	130*	126*	115*	
76							152*	145*	141*	130*	128*	123*	114*	
78							143*	139*	138*	127*	123*	118*	113*	
80								134*	132*	122*	120*	115*	111*	
84								123*	125*	115*	112*	108*	105*	
88									115*	107*	105*	103*	100*	
92										101*	98*	96*	94*	
96											91*	93*	89*	
100												83*	86*	84*
104													76*	77*
108														68*
112														58*



## 塔式副臂起重性能表 Tower jib lifting performance table

主臂长度90m, 主臂角度85°, 超起平衡重半径30m, 超起平衡重480t  
 Boom length 90m, boom angle 85°, SL counterweight radius 30m, SL counterweight weight 480t

主臂90m													
塔臂长度 (m) Tower jib length	36m	42m	48m	54m	60m	66m	72m	78m	84m	90m	96m	102m	108m
幅度 Radius													
26	445*												
28	434*	364.35*											
30	423*	358.05*	326.55*										
32	411*	349.65*	324.45*	296.1*									
34	400*	341.25*	317.1*	294*	267.75*								
36	387*	331.8*	309.75*	288.75*	265.65*	241.5*							
38	377*	323.4*	302.4*	283.5*	261.45*	240.45*	218.4*						
40	368*	315*	295.05*	277.2*	257.25*	237.3*	217.35*	187*					
42	358*	306.6*	287.7*	270.9*	252*	234.15*	215.25*	187*	168*				
44	349	299.25*	280.35*	265.65*	247.8*	229.95*	212.1*	185*	168*	151*			
46		292.95*	274.05*	259.35*	242.55*	225.75*	208.95*	183*	166*	151*	135*		
48		285.6*	267.75*	253.05*	237.3*	222.6*	205.8*	181*	165*	149*	135*	120*	
50		279.3*	262.5*	246.75*	232.05*	218.4*	202.65*	178*	163*	148*	134*	120*	108*
52			256.2*	242.55*	216*	214.2*	198.45*	176*	161*	147*	133*	119*	108*
54			250.95*	237.3*	212*	200*	195.3*	173*	159*	145*	132*	119*	107*
56			244.65*	233.1*	208*	196*	192.15*	170*	157*	144*	131*	118*	106*
58				227.85*	196*	192*	187.95*	167*	154*	142*	129*	117*	106*
60				222.6*	188*	188*	176*	164*	152*	140*	128*	116*	105*
62				218.4	184*	178*	173*	162*	150*	138*	127*	115*	104*
64					175*	174*	170*	159*	147*	136*	125*	114*	103*
66					168*	165*	166*	153*	145*	134*	124*	112*	102*
68					164*	162*	158*	147*	143*	133*	122*	111*	101*
70						154*	155*	142*	140*	130*	121*	110*	100*
72						151*	147*	136*	136*	127*	119*	109*	99.5*
74						144*	144*	130*	133*	121*	118*	108*	98.5*
76							138*	125*	127*	118*	113*	106*	97.5*
78							135*	120*	124*	114*	111*	105*	96*
80							129*	118*	119*	111*	106*	103*	95*
84								105*	112*	103*	100*	96*	93*
88									105*	97*	94*	92*	89*
92										91*	88*	86*	83*
96											86*	83*	80*
100												78*	75*
104													74*
108													69*
112													62*



## 塔式副臂起重性能表 Tower jib lifting performance table

主臂长度108m, 主臂角度85°, 超起平衡重半径30m, 超起平衡重480t  
 Boom length 108m, boom angle 85°, SL counterweight radius 30m, SL counterweight weight 480t

主臂108m													
塔臂长度 (m) Tower jib length	36m	42m	48m	54m	60m	66m	72m	78m	84m	90m	96m	102m	108m
幅度 Radius													
28	299.25*												
30	292.95*	270.9*											
32	286.65*	265.65*	243.6*										
34	280.35*	260.4*	239.4*	222.6*									
36	273*	255.15*	235.2*	218.4*	190*								
38	266.7*	249.9*	231*	215.25*	188*	172*							
40	260.4*	243.6*	225.75*	211.05*	185*	171*	155*						
42	254.1*	237.3*	221.55*	206.85*	182*	169*	154*	140*					
44	248.85*	232.05*	216.3*	203.7*	179*	166*	152*	139*	126*				
46	243.6*	227.85*	211.05*	199.5*	176*	163*	150*	138*	125*	114*			
48		222.6*	206.85*	195.3*	172*	161*	148*	136*	124*	113*	102*		
50		218.4*	202.65*	191.1*	169*	158*	146*	134*	122*	112*	102*	91*	
52		213.15*	198.45*	186.9*	166*	155*	143*	132*	121*	111*	101*	91*	81*
54			194.25*	183.75*	162*	152*	141*	130*	119*	110*	99.5*	90*	81*
56			190.05*	179.55*	159*	150*	138*	128*	117*	108*	98.5*	89.5*	80*
58			185.85*	176.4*	156*	147*	136*	126*	116*	107*	97.5*	88.5*	79.5*
60				173.25*	153*	144*	133*	124*	114*	105*	96.5*	87.5*	78.5*
62				169.05*	150*	141*	131*	122*	112*	104*	95*	86.5*	78*
64				165.9*	148*	139*	129*	120*	110*	102*	93.5*	85.5*	77*
66					145*	137*	126*	117*	108*	101*	92.5*	84.5*	76*
68					139*	134*	124*	115*	106*	99.5*	91*	83.5*	75.5*
70					136*	132*	122*	112*	105*	97.5*	89.5*	82*	74.5*
72						126*	120*	107*	103*	96*	88*	81*	73.5*
74						124*	118*	103*	101*	94.5*	86.5*	80*	72*
76						119*	116*	98*	99.5*	93*	85.5*	78.5*	71*
78							114*	95*	98*	91.5*	84*	77.5*	70*
80							111*	89*	96.5*	90*	82.5*	76*	69*
84								82*	93*	87*	80*	74*	67*
88									89*	82*	77.5*	71.5*	65*
92									84*	77*	74*	69.5*	63*
96										73*	69*	67*	60.5*
100											65*	65*	58.5*
104												62*	56.5*
108													59*
112													52.5*
116													50.5*



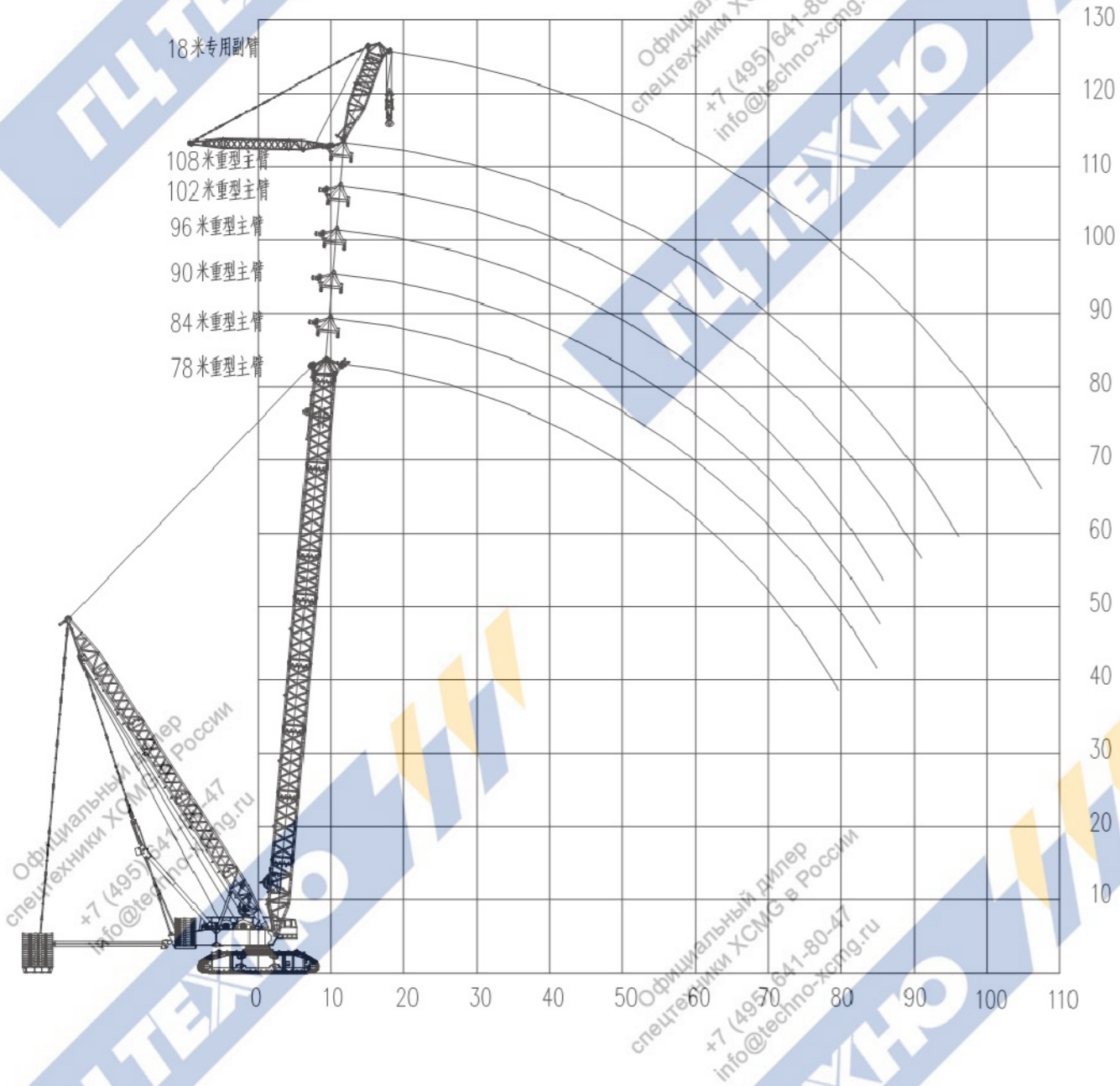
## 专用副臂作业范围 Special jib working radius



## 专用副臂起重性能表 Special jib lifting capacity table

Официальный дилер  
спецтехники XCMG в России  
+7 (495) 641-80-47  
info@techno-xcmg.ru

Официальный дилер  
спецтехники XCMG в России  
+7 (495) 641-80-47  
info@techno-xcmg.ru



Официальный дилер  
спецтехники XCMG в России  
+7 (495) 641-80-47  
info@techno-xcmg.ru

Официальный дилер  
спецтехники XCMG в России  
+7 (495) 641-80-47  
info@techno-xcmg.ru

Официальный дилер  
спецтехники XCMG в России  
+7 (495) 641-80-47  
info@techno-xcmg.ru

专用副臂长度18m, 安装角15°, 超起平衡重800t, 超起平衡重半径30m  
special jib length 18m, installation angle 15°, SL counterweight 800t, SL counterweight radius 30m

主臂长度 Boom length 幅度 Radius	78	84	90	96	102	108
18	861					
20	861	770	692	621	559	
22	861	770	692	621	559	503
24	859	770	692	621	559	503
26	850	768	692	621	559	503
28	842	764	690	621	559	503
30	768	760	689	621	559	503
34	668	697	702	631	567	507
38	618	611	605	617	555	490
42	547	540	533	527	531	473
46	488	481	475	468	461	455
50	437	431	425	419	412	406
54	394	387	383	376	369	362
58	358	351	344	338	333	325
62	327	319	313	306	300	292
66	299	291	285	278	272	265
70	266	267	261	254	247	240
74	233	242	240	233	226	218
78	202	214	220	214	207	200
82	172	186	194	196	190	182
86	165	159	170	174	174	167
90		155	147	152	156	152
94			140	132	136	137
98			125	112	119	120
102				105	100	103

Официальный дилер  
спецтехники XCMG в России  
+7 (495) 641-80-47  
info@techno-xcmg.ru

Официальный дилер  
спецтехники XCMG в России  
+7 (495) 641-80-47  
info@techno-xcmg.ru



## 市场应用 Market application



## 市场应用 Market application



1	2	4	5
	3		
6	8	9	10
7			

- XGC28000于2011年6月投入工程应用, 服务于国家各类大型工程建设
- 2011年6月-10月, 在中石化武汉80万吨/年乙烯工程中, 总计吊装728台设备, 总吊重量超过95000吨
- 2012年6月8日, 中石化广东茂名基地, 高度20米重量超1000吨加氢裂化反应器主体吊装, 起重力矩高达26000吨米
- 2012年8月1日, 中石化泉州惠安基地1200万吨/年炼油项目中, 将直径约4.5米、长28米、重达740余吨的渣油第一反应器吊装就位, 负载率高达99.3%
- 2012年12月19日, 中煤神华宁夏基地, 配合溜尾将总高100.9米总重量约2300吨的C3分离塔一次性吊装安装到位
- 2013年4月1日, 石化泉州炼油基地, 将重达1340吨蜡油加氢裂化反应器吊装到位
- 2013年9月28日, 中石化烟台万华工业园, 重量1174吨脱乙烷汽提塔主体吊装, 负载率高达98%
- 2015年1月18日, 山西潞安高硫煤清洁利用油化电热一体化示范项目基地, 先后使用专用副臂工况90+18米、塔式副臂工况90+36米, 吊装重达650吨反应塔和350吨钢结构模块, 负载率均超90%
- 2015年3月27日, 山东龙口中集来福士海工建造基地, 使用塔式副臂工况102+54米, 将重达220吨海洋石油钻井平台桩腿吊装至100米高空, 负载率超90%
- 2015年8月16日, 中核集团福建福清核电站, 完成了全球首个“华龙一号”示范工程的第一吊。使用轻型主臂114米, 在82米作业半径下进行外径46米高度超7米重达157吨的超大钢衬里模块吊装。

- XGC28000 was applied in construction lifting in June, 2011. It serve all kinds of large national construction.
- During June to October, 2011, it served in an ethylene construction with yearly production of 800,000t which was constructed by Sinopec in Wuhan Province. XGC28000 lifted 728 equipments totally, the total lifting weights exceeded 95000t.
- On June 8th 2012, at Sinopec Maomin base in Guangdong province, the lifting of 20m high hydrogen-cracking reactor main body which weights 1000t, lifting moment reached 26000tm.
- On Aug. 1st, 2012, At Sinopec Hulan base in Quanzhou, an oil refining project of Sinopec with yearly production of 12000,000t, an 28m long oil residual reactor with diameter of 4.5m, weight of 740t was lifted on position, its load rate reached 99.3%;
- On Dec. 19th 2012, at Ningxia base of China Coal Shenhua, a C3 separation tower with a height of 100.9m and weight of 2300t was lifted on position once with the cooperation of a trailing crane.
- On April 1st, 2013, at Quanzhou oil refining base of Sinopec, a wax oil hydrogen-cracking reactor with weight of 1340t was lifted on position.
- On Sep. 28th, 2013, at Yantai Wanhua industrial area of Sinopec, A deethanizing tower with weight of 1174t was lifted. The load rates reached 98%;
- On Jan. 18th, 2015, in Luan, Shanxi Province, a demonstrative project of sulphur coal clean utilization of oil, chemistry, electricity and heating, a 650t reactor and 350t steel module were lifted under 90+18m special jib working condition and 90+36m tower jib working condition, the load rate exceeded 90%.
- On Mar. 27th, 2015, Shandong Longkou, marine construction base of CIMC Raffles, a 220t piled leg of ocean oil drilling platform was lifted up to 100m high under 102+54m tower jib working condition, the load rate exceeded 90%
- On Aug. 16th, 2015, Fuqing Nuclear Power plant of CNNC, the first lift of HUALONG in the world, a 157t steel-lined module with a 46m external diameter and a height of 7m was lifted under 114m light duty boom and 82m working radius.