

For more information on XCMG products, dealer services, and industry solutions, visit us on the web at www.xcmg.com

Jan 1, 2014
All Rights Reserved

Materials and specifications are subject to change without notice. Featured machines in photos may include additional equipment. See your XCMG dealer for available options.

apply to all similar docs: XCMG, WWW.XCMG.COM, their respective logos, "XCMG For Your Success", as well as the corporate and product identity used herein, are trademarks of XCMG and may not be used without permission.



XUZHOU CONSTRUCTION MACHINERY GROUP IMP. & EXP. CO., LTD



XCMG Headquarters, Xuzhou Economic Development Zone, Jiangsu, China 221004



(+86-516) 87739230



XCMG Regional Departments:

West Asia & North Africa	(+86-516) 87739251 87739202 87739223
Asia-Pacific	(+86-516) 87739500 87739529 87739233
Central Asia	(+86-516) 87739218 87739239 87739510
North America	(+86-516) 87739285 87739551 87739713
South America	(+86-516) 87739196 87739714 87739187
Africa	(+86-516) 87739501 87739222 87739709
Europe	(+86-516) 87739238 87739271 87739228



export@xcmg.com



WWW.XCMG.COM

XCMG For Your Success

Engine model	YC6J125Z-T22
Rated power (kW)	92
Operation mass (kg)	11000
Rated bucket capacity (m³)	1.9
Total cycling time (s)	9.8

LW300KN

WHEEL LOADER

Sturdy and Heavy

All-round Flagship Heavy-load Benchmark

Technical status

- Overload leader of 3t products and pioneer of low-speed energy-saving technology.

Model Characteristics

- Special heavy-load energy-saving drive system of XCMG.
- Characteristic extra-strong heavy-load structural part from XCMG.
- Extra-long wheelbase and super-large self-weight with stability leading the industry.
- All structural parts employ computer aided design, featuring sturdiness and excellent reliability.
- Multiple selections for configurations transforming work tools, suitable to construction requirements of different areas and working conditions.

Performance Advantages

- Design of long wheelbase (2,900mm) and large bucket volume (1.9m³) creates efficiency limit in the industry of 3t products.

Market Status

- Leading model with long wheelbase and super heavy load.



EXCELLENT power and drive system

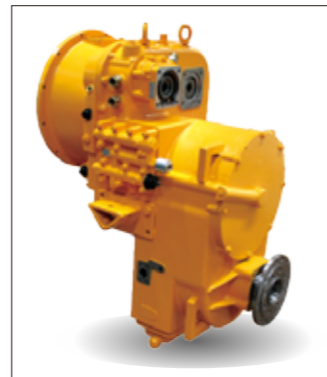
Powerful

- Meets China II emission standard, high performance and low fuel consumption.
- Powerful and high torque reserve coefficient, able to meet overload requirement instantly and provide power required for operation with heavy and large loads.
- Maximum traction force is up to 100kN, making it top-ranking in the industry.



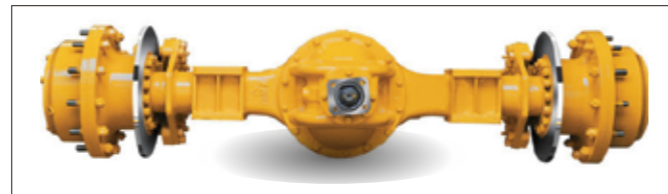
Heavy-load Energy-saving Gearbox And Torque Converter Assembly Patented Technologies Of XCMG

- Dedicated large-capacity torque converter guarantees maximum utilization of engine power.
- ZL40/50 planetary gearbox, key load-bearing parts employ imported elements, featuring high overload capacity.
- Flange of drive shaft complies with SAE/DIN international standard with increased diameter of fixing bolt circle, featuring extra-strong resistance to torque for continuous operation with high strength and heavy loads.

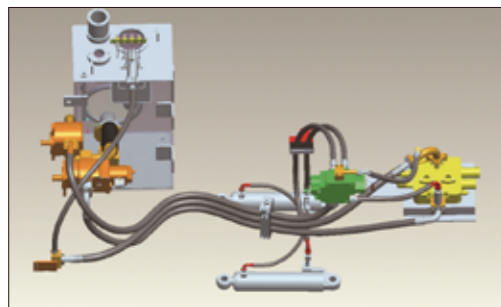


Excellent Reinforced Heavy-load Drive Axle

- All load-bearing parts are thick and solid with good capacity against overload, satisfying requirements for various operations with high strength and large load.



Hydraulic And Electric Element of International Quality

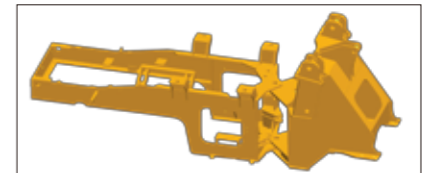


- First-rate hydraulic element, featuring low pressure loss, little system radiation and high part reliability.
- Hydraulic pump of top-class brand provides stronger hydraulic power.
- Italian α hydraulic hose featuring resistance to heat and pressure, and long service life.
- Two layers of sealing, i.e. 24° cone plus O-shaped ring up to DIN international standard are employed for hydraulic piping, which features better tightness and effectively resolves the issue of leakage.
- Imported materials are used for harness with optimized process layout for guaranteeing circuit system reliability.

Extra-strong Heavy-load Structural Part WITH STANDING TRAILS AND ERRORS

Frame Structure With Extra-strong Load-bearing Capacity

- Heavy-load design, box type, robot welding, thick plate, secure welding joint, high anti-torque coefficient and high overload capacity.
- Technology of finite element analysis is employed to decrease stress concentration and eliminate local weakness. Frame is resistant to impact and overload, and is capable in various overload working conditions.



Sturdy And Reliable Hinge Joint of the Frame

- Alignment design of main hinge joint decreases turn radius and reduces tire wear and energy loss.
- Large spacing between upper and lower hinged plates, high structural strength and sufficient repair space.



CAPACIOUS AND COMFORTABLE driving space



Operation elements and buttons at the fingertips can easily realize various operations.



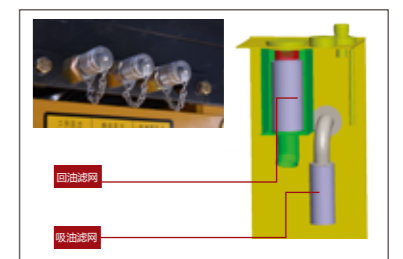
Fully-covered exquisite interiors and furnishing of multifunctional player and luxurious audio system provides best operation environment.



Full-view rear window, high mounted rear lamp and equipment for reverse alarm provide good vision and safe reversing.

EASY AND CONVENIENT maintenance

- Owing to the new frame structure of engine hood, upturning side door and large opening angle, maintenance of engine and radiator becomes much easier.
- With concentrated fuse box, operation status of electrical system is uniformly displayed, featuring easy maintenance.
- Measuring points for system pressure are concentrated, saving both time and labor for maintenance.
- Oil return circuit of hydraulic oil tank is designed with independent cavity, which guarantees maintenance convenience.



Design of wear-resistant bucket with HIGH STRENGTH

Use of wear-resistant material with high strength

- Steel plate with high strength is applied to bucket with resistance to wear and impact increased by over 30%, featuring longer service life.

Special reinforcement of key parts

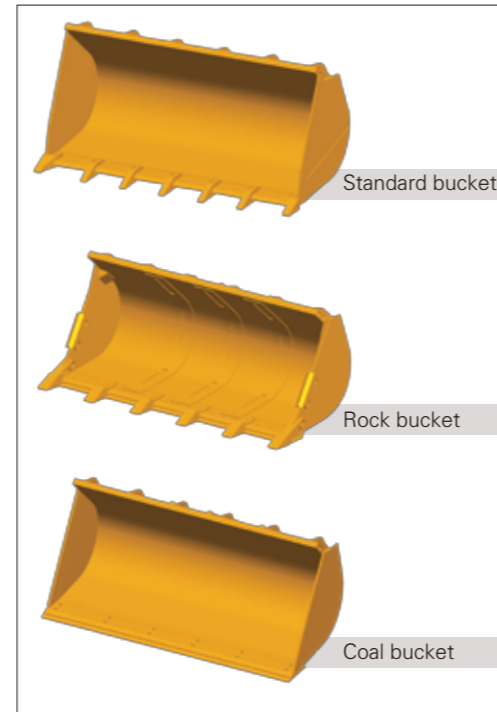
- Structural design of reinforcing rib plate is employed for key stressed parts to prevent distortion of bucket.

Utilization of high baffle structure

- Reduces material scattering and guarantees maximum material loading capacity.

Diversified bucket design

- Standard bucket is universally applicable to various working conditions; it ranks at the top of the industry by volume of 1.9m³;
- Rock bucket is dedicated to solid materials, such as rock, resistant to wear and impact;
- Coal bucket is dedicated to loose materials, such as coal, featuring large volume and high efficiency.

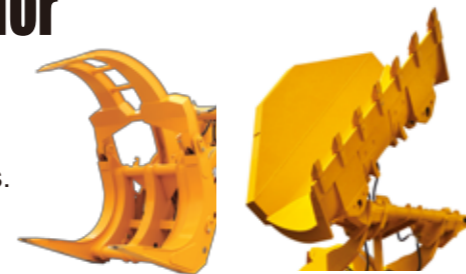


Various operation devices are suitable for requirements of different operations

Clamp: used for pick-up and transfer of various woods and pipe fittings.

Side dumping: used for construction in narrow areas such as tunnel.

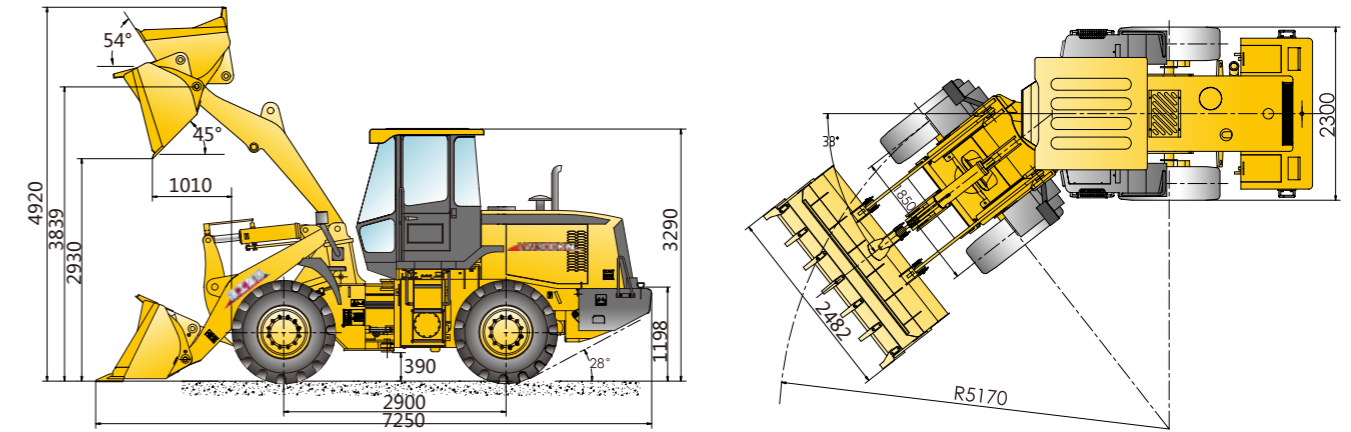
Snow plow: used for removal of snow on highways and urban streets.



Parameters of transforming work tools

Item	Side-dump Bucket	Gripping Device	Grasping Grass Machine	Sliding Fork	Unit
Bucket capacity	1.5	-	-	-	m ³
Rated load	2.2	3	3	3	t
Dumping height (main blade plate)(frontal dumping)	2813	2784	3025	3012	mm
Dumping distance (main blade plate)(frontal dumping)	1104	1134	2028	1614	mm
Dumping height/Dumping distance (side dumping)	3623/83	-	-	-	mm
Horizontal lifting height	-	-	-	3500	mm
Maximum dumping angel	45	45	20	25	°
Maximum opening size	-	1576	2800	-	mm
Minimum clamping diameter	-	Ø580	Ø1045	-	mm
Fork retracting angle	-	-	-	23	°
Length of tool	-	-	-	1700	mm
Width of tool	2690	1650	2198	2012	mm
Height of tool	-	-	-	890	mm
Length of fort tooth	-	-	-	1050	mm
Overall demension: (L x W x H)	7318×2295×3290	7400×2300×3290	7820×2300×3290	7379×2300×3290	mm

Overall Demension



Item	Standard Movable Arm			High Lift Unloading Arm			Unit
	Standard bucket	Rocket bucket	Enlarge bucket	Standard bucket	Enlarge bucket	Enlarge bucket	
Bucket capacity: Stack loading	1.9m ³	1.5m ³	2.1m ³	1.5m ³	1.9m ³	2.1m ³	m ³
Bucket capacity: Flat loading	1.5	1.35	1.7	1.35	1.5	1.7	m ³
Width of bucket	2482	2550	2470	2482	2482	2482	mm
Dumping height	2930	2948	2854	3268	3244	3174	mm
Dumping distance	1010	987	1081	1120	1144	1245	mm
Working height (height-rising)	4920	4820	4970	5090	5140	5360	mm
Total length	7250	7295	7250	7595	7550	7550	mm
Turning radius (outside of bucket)	6020	6060	6020	6290	6320	6320	mm
Digging depth : 0°	55	55	55	96	96	96	mm
10°	230	205	228	245	250	270	mm

Main Specifications

Item	Specifications	Unit
Rated load	3000	kg
Rated bucket capacity	1.9	m ³
Operation mass	11000	kg
Dumping height (from ground to main blade plate)	2930	mm
Dumping distance (from the front wheel to main blade plate)	1010	mm
Maximum breakout force	130	kN
Maximum traction force	100	kN
Lifting time of swing arm	5.6	s
Total cycling time	9.8	s
Minimum turning radius (outer edge of bucket)	6020	mm
Minimum turning radius (tire center)	5170	mm
Articulated angle	38	°
Gradeability	28	°
Tire type	17.5-25-12PR	
Overall demension (L x W x H)	7250×2482×3290	mm
Engine model	YC6J125Z-T22	
Rated power speed	92/2000	kW/r/min
Travel speed	Gear I(F/R)	0 ~ 15/20
	Gear II(F)	0 ~ 40

With the advancement of technology, product structure, specifications are subject to change without notice. In the event of discrepancy between the information and the actual product, the specification of the actual product shall be used as reference.