

# 全地面起重机 / All Terrain Crane

## XCA450



450 t



80 m



130 m



**XCA450适用于120吨盾构机安装、高层建筑吊装、大型石化及电厂建设吊装、1.5兆瓦及以下风电维护等典型工况作业。**

**XCA450 is suitable for typical working conditions, such as installation of 120t shield machine, lifting operation in high-rise buildings, large petrochemical and power plant construction, maintenance of wind turbine below 1.5MW.**



# XCA450

Официальный дилер  
спецтехники XCMG в России  
+7 (495) 641-80-47  
info@techno-xcmg.ru

- 七节80m主臂，最大额定起重力矩13500KN.m，最大起升高度130m，可用于1.5MW-2.0MW风电维修；
- Seven-section boom of 80m, the max. rated lifting torque is 13500KN; the max. lifting height is 130m. It can be used for 1.5-2.0MW power wind maintenance.
- 超起、平衡重等大型构件自拆卸技术，整机拆装更加便捷
- Self-assembly technology of super lifting device and counterweight contributes to more convenient self-assembly of the whole crane
- 起重机智能臂架
- Intelligent crane boom technology.
- 起重机行驶智能控制系统
- Intelligent driving control system.



# XCA450





# XCA450



## 动力强劲，行驶性能优越

### Power and traveling performance

- 奔驰柴油发动机，额定功率420kw，最大输出扭矩 2700N.m
- Benz diesel engine, rated power 420kw, max. torque 2700N.m
- ALLSION自动变速箱
- ALLSION automatic gearbox
- 最高车速76Km/h，最大爬坡能力42%
- Max. travel speed 76Km/h, Max. grade ability 42%



## 大吨位起重机单发动机系统

### Large tonnage crane's mono-engine system

- 整车共用底盘发动机，动力通过机械传动传递到上车，为上车提供动力。
- The whole vehicle shares the chassis engine. The power is transferred via the mechanic transmission to the upper body and supplies it with the power.
- 仅需对底盘单台发动机系统进行维护保养，降低维护工作量。动力系统年维护费用节约40%以上。
- Maintenance is to be carried out only on the mono-engine chassis system thus reducing the workload of maintenance. The annual maintenance cost of dynamic system is saved for more than 40%.



## 行驶转场高效安全

### Safe and efficient site transfer on travel

- 104t、141t短距离转场，84t长途转场
- Configuration of 104t and 141t for short-distance transfer, 84 for long-distance
- 84t长途转场移动:携带后支腿、7节主臂
- Site transfer of 84t in long-distance: rear outrigger and seven-section boom.
- 104t短途转场移动: 84t状态+超起、前支腿、备胎、备胎支架，支脚盘
- Site transfer of 104t in short-distance: travel under 84t, superlift, front outrigger, spare tire, spare tire support and outrigger float.
- 141t短距离行驶: 84t状态+超起、前支腿、备胎、备胎支架，支脚盘、配重支座 (40t)
- Site transfer of 141t heavy-load in short-distance: travel under 84t, superlift, front outrigger, spare tire, spare tire support, outrigger float and counterweight bearing(40t)



## 悬挂系统

### Suspension system

- 自动调平、悬架升降、弹性刚性转换等功能
- Functions of automatic leveling, suspension lifting, elastic/rigid state switch-over
- 自润滑高强度悬挂油缸、高强度关节轴承式推力杆，单独悬挂承载从25t提升30t
- Self-lubricating and high strength suspension cylinders and pushrod with high-strength oscillating bearing are equipped with independent suspension bearing improved from 25t to 30t
- 油缸行程为-100mm~140mm
- Stroke of cylinder -100mm~140mm

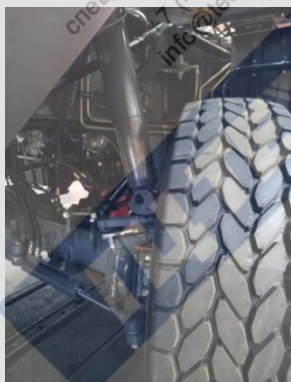


## 制动系统

### Brake System

- 双回路气动盘式制动器
- Double-circuit air pressure brake, disc brake
- 驻车制动: 弹簧储能制动，作用于2-6轴车轮。
- Parking brake: spring energy brake, acting on wheels of 2-6 axes.
- 辅助制动: 发动机缓速制动、发动机排气制动、变速箱缓速制动、电涡流缓速制动
- Auxiliary brake: engine retarded brake, engine exhaust brake, transmission retarded brake, eddy current retarder brake

# XCA450



## 转向系统

### Steering system

- 双回路转向系统，液压助力，转向轻便灵活。
- Double-circuit steering gear and hydraulic boosting system contributes to smooth and flexible steering
- 先进的电液比例转向控制技术。
- Advanced electric-hydraulic proportional steering control technology
- 优化转向机构布置及转向中心位置，匹配重载专用转向拉杆，避免了路况车桥悬空导致机构损坏
- With optimized steering system arrangement of center position matching special heavy-load, the mechanism damage can be avoided caused by axles suspending in the air under severe road conditions.



## 高效便捷的自拆装技术

### Efficient and convenient self-assembly technology

- 平衡重能够无序组装，采用专用吊装工具远程无线遥控操作，液压与机械锁止，双重保护；
- Counterweight slabs can be assembled disorderly and locked hydraulically and mechanically, double protection is available. Wireless remote control operation can be performed with special slings.
- 超起定长张紧技术实现超起一键张紧功能，80s完成张紧，超起展收效率提升30%
- With fixed-length tensioning technology of super lift device, one-key tensioning function is realized in 80s so that folding and unfolding efficiency is improved by 30%.



公路行驶转向模式  
Normal road steering mode



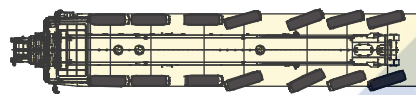
小转弯转向模式  
Tight turning radius mode



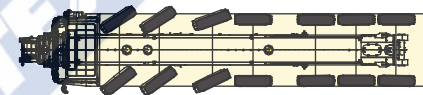
蟹行转向模式  
Crab walk mode



防甩尾转向模式  
Anti-drifting steering mode



后桥独立转向模式  
Independent rear axle steering mode



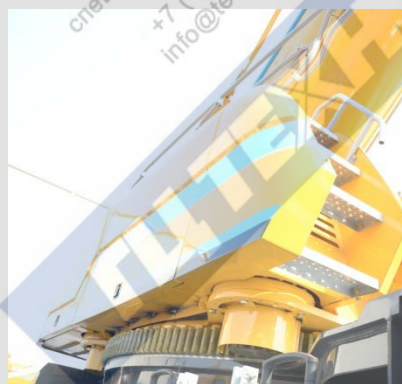
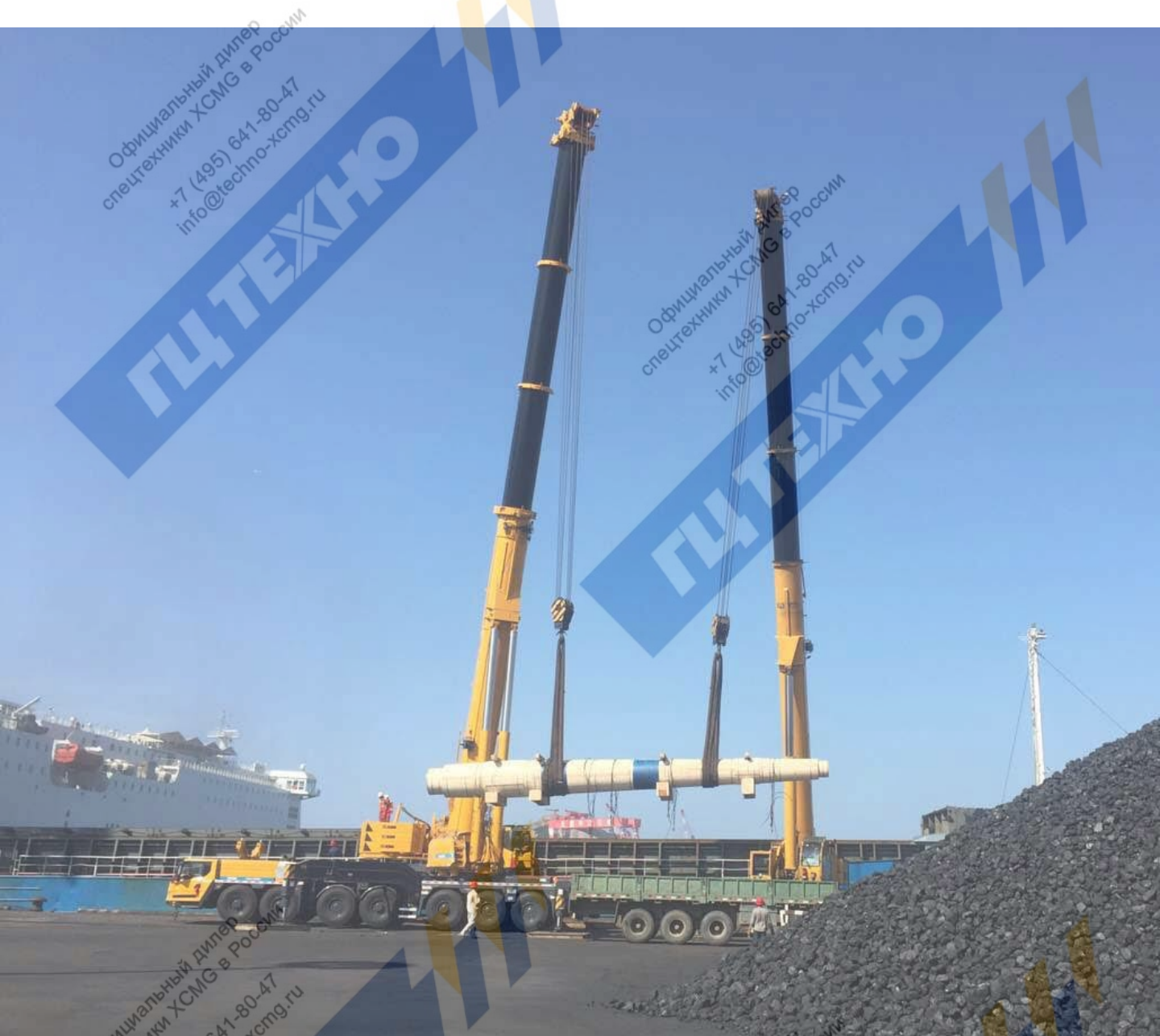
后桥锁止转向模式  
Rear axle locked mode

## 6种转向模式

### 6 steering mode

- 通过旋钮式开关选择转向模式
- Selection of steering mode by a knob switch
- 清晰的控制原理及布局
- Clear layout of control elements and displays

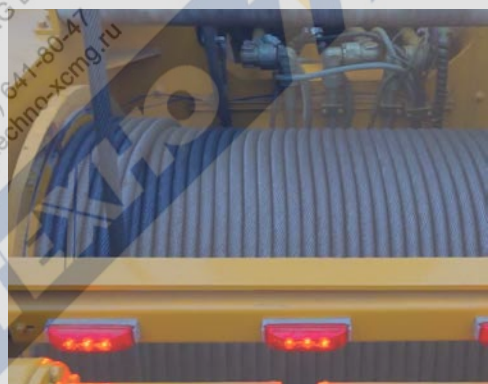
# XCA450



## 回转机构

### Slewing mechanism

- 三排滚柱外齿式回转支承，左侧布置双回转机构，360度回转
- Three-row roller slewing ring with external teeth may continuously slew 360° after being driven by double-slewing gear arranged at its left side
- 具有动力控制或自由回转的功能，可无级调速
- Power control and free-sliding function are available, and speed may be infinitely regulated
- 回转速度为0-1.2r/min
- Slewing speed 0-1.2r/min



## 超强起重性能

### Super lifting performance

- 7节80m主臂，6-42m固定副臂，12-84m塔臂
- 7-section boom of 80m, fixed jib of 6-42m and tower jib of 12-84m.
- 超起风电工况：super lifting wind power working condition:
  - 超起+主臂80m，工作幅度16m，额定载重量44.8t
  - Super lifting device + boom 80m, working radius:16m, rated lifting load:44.8t
  - 超起+主臂69.9m+6m+12m固定副臂，幅度16m，额定载重量42t
  - Super lifting device + boom 69.9m+6m+12m fixed jib, the rated lifting load 42t.
- 1.5MW 风电检修，产品携带附件更多，安装方便效率更高，大幅度节省使用成本。
- Less product auxiliaries for 1.5MW wind power maintenance operation and more efficient and convenient assembly contributing to much lower cost.



## 起升机构

### Hoisting mechanism

- 行星齿轮减速器、常闭式制动器
- Planetary gear reducer, normally closed brake
- 最大单绳拉力为13.5t
- Max. single line pull 13.5t
- 最大起升速度135m/min
- Max. hoisting 135m/min



## 变幅机构

### Elevating mechanism

- 双变幅油缸，可靠性高
- Double elevating cylinder, high reliability
- 带自补偿功能的电比例平衡阀，更安全
- Safer electric proportional balance valve with self-compensating function

# XCA450



01010undl 000000 2 unde 2015-12-28 11:14

请输入作业信息:

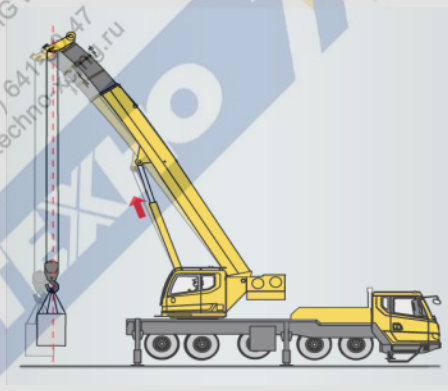
吊重量:	10 t	000000	000000
起始幅度:	9 m	000000	000000
终止幅度:	15 m	000000	000000
高度(可选):	2 m	000000	000000

推荐工况

000000	000000
000000	000000
000000	000000
000000	000000

OK

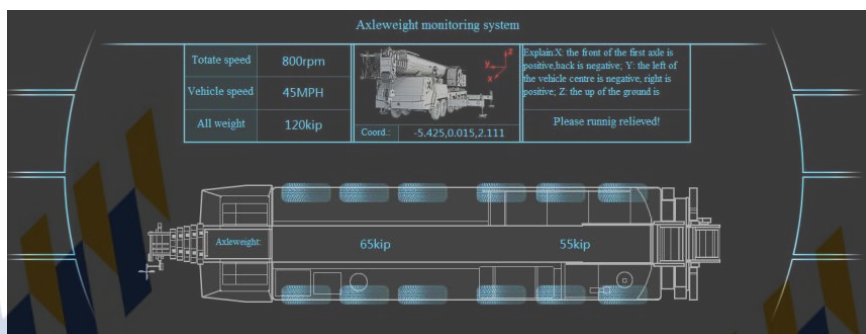
- 工况自动规划技术**  
**Automatic working condition planning technology**
- 自动推荐最优工况
  - Automatically recommend the most proper working conditions
  - 简化查询与设置工况过程
  - Searching and setting work condition simply



## 行驶智能、越野高效

### Intelligent travel and Efficient & excellent off-road performance

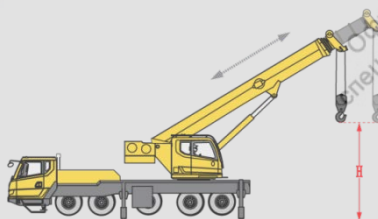
- 行业首创的多模式驱动技术，实现分路况实时智能控制，使整车行驶状态达到最优，提升整车行驶的安全性及可靠性。
- With first launched multi-mode drive technology in the industry, real-time intelligent control for various working conditions is realized so that the crane has optimized travel state and crane safety and reliability are improved.
- **轴荷监测技术**：通过轴荷监测，自动匹配相对应的最高档位，保障车辆行驶安全。
- **Axle load monitoring technology**: Proper gear (the highest gear engaged) and axle driving mode are matched automatically by axle load monitoring technology, which provides protection for crane safety in traveling.



## 起重变幅补偿控制技术

### Automatic elevating compensation technology

- 通过控制起重机变幅角度，自动实现对起落钩时，吊臂变形引起的幅度变化进行补偿。
- With elevation compensation technology applied, elevation compensation caused by boom deformation can be achieved during hook block raising and lowering process through regulating the elevation angle of the crane.



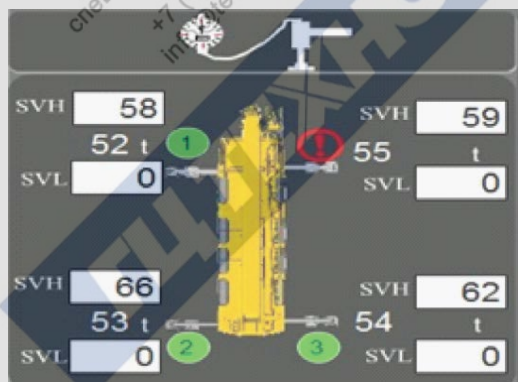
## 卷扬随动控制技术

### Winch servo control technology

- 在伸缩、变幅时，由控制系统自主控制卷扬，节省作业时间40%以上。
- With winch servo control technology applied, winch is automatically managed by control system during telescoping and elevating operation, which saves operation time over 40%.
- 具备变幅地面随动、伸缩地面随动、伸缩臂头随动三种模式
- There are 3 modes : THB, THG, EHG

# XCA450

Официальный дилер  
спецтехники XCMG в России  
+7 (495) 641-80-47  
info@techno-xcmg.ru



## 支腿压力检测 Outrigger pressure detection function

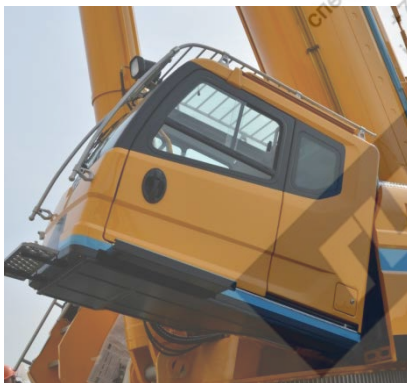
- 实时监控支腿受力情况，作业稳定性不足或超出支腿压力设定范围时紧急报警，防止翻车事故的发生
- Enables to detect outrigger pressure in real time. When the operation stability is insufficient or actual outrigger pressure exceeds the set scope, emergency alarm will sound to prevent tipping-over accident;



## 新型外观造型与人性化设计

### New appearance and humanized design

- 新一代外观设计，整机刚劲有力，时尚的驾驶室与操纵室新外观，层次感与力量感完美结合；全面的人体工程学分析，人性化细节处理，打造驾驶轻松、操纵舒适，维护便捷的内在品质
- A new generation of appearance design makes the whole vehicle powerful and vigorous; Fashionable outlines of driver's cab and operator's cab bring perfect combination of sense of lays and sense of physical strength; ergonomics analysis and humanized details make inherent quality of easy driving comfortable operation and convenient maintenance



### 智能工作灯

#### Smart headlamp

- 可以进行人工或随动控制，满足不同位置的观察需求
- Manual or servo control, available for operator to observe from different angles or positions

### 调频无线遥控

#### FM radio remote control

- 不仅配置了行业独有的彩色显示屏，而且可以实现所有吊装动作；
- Not only offering many graphical and data representations, but also enabling all lifting movements

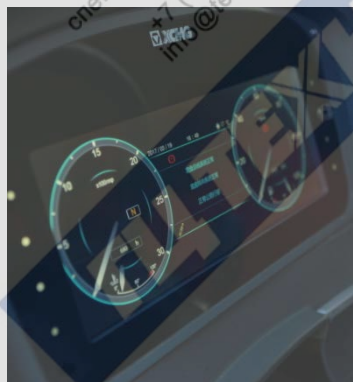
# XCA450



## 驾驶室

### Driver's cab

- 12.3寸大镜面真彩色显示屏，显示更清晰
- 12.3 inch color display with large mirror surface makes indication clearer
- 主驾气悬浮座椅，自动调节高度
- An air-floating seat designed for the driver is automatically adjustable in height
- 副驾双座椅，可展开为简易卧铺
- A double-seat designed for the co-driver may be used as a berth for rest.
- 标配冷暖空调、倒车影像
- Reverse image heater and air conditioner are standard



## 徐工人机交互系统

### XCMG man-machine interactive system

- 行业首发，用轿车级别的人机交互系统，实现了操作人员与车辆的友好对话。轻松掌控车辆行驶、起重作业的各种状态信息，操纵更轻松、便捷
- First launched in the industry man-machine interactive system with the level of a car achieves friendly conversation between operator and crane. Information of every state in driving and lifting operation is administered easily which makes operation easier and more convenient.



## 操纵室

### Operator's cab

- 全人机工学工作空间设计,作业更舒适,安全
- Ergonomically designed working space makes operation safer and more comfortable
- 双10.4寸真彩色触摸屏
- Double 10.4 inch color touch screen displays
- 20°可俯仰操纵室
- Operator's cab can be tilted 20° backwards



- 安全保护、吊装动作、操纵环境三个区域,控制便捷
- Three control areas for safety protection, hoisting operation and operating environment bring convenient control

Официальный дилер  
спецтехники XCMG в России  
+7 (495) 641-80-47  
info@techno-xcmg.ru

Официальный дилер  
спецтехники XCMG в России  
+7 (495) 641-80-47  
info@techno-xcmg.ru



地址：中国江苏徐州市铜山路165号

Add : No.165 Tongshan Road Xuzhou Jiangsu China

电话(Tel) : +86-516-83462242/83462350

质量监督电话(Quality Inquiry Tel) : +86-516-87888268

备件电话(Spare Parts Tel) : +86-516-83461542

邮编(Post Code) : 221004

网址(Web) : [www.xcmg.com/qizhongji](http://www.xcmg.com/qizhongji)

服务热线 Service Tel

400-110-9999

400-001-5678



本印刷品不属于合同。出于产品不断改进的需要，我们保留对产品型号、参数、配置进行变更的权利，恕不另行通知。图片仅供参考，具体产品以实物为准。图片中产品可能并非标准配置，部分部件可能需要另行购置。办理牌照和上路行驶需遵守当地法规。

This print does not belong to the contract. We reserve the right to modify the design (such as product model, parameters and configuration) without notice for improvement. The pictures are just for reference. The product in the picture may not be standard configuration. Some parts need to be purchased separately. Conform to the local laws for license application and road traveling.

XCMG—XCA450