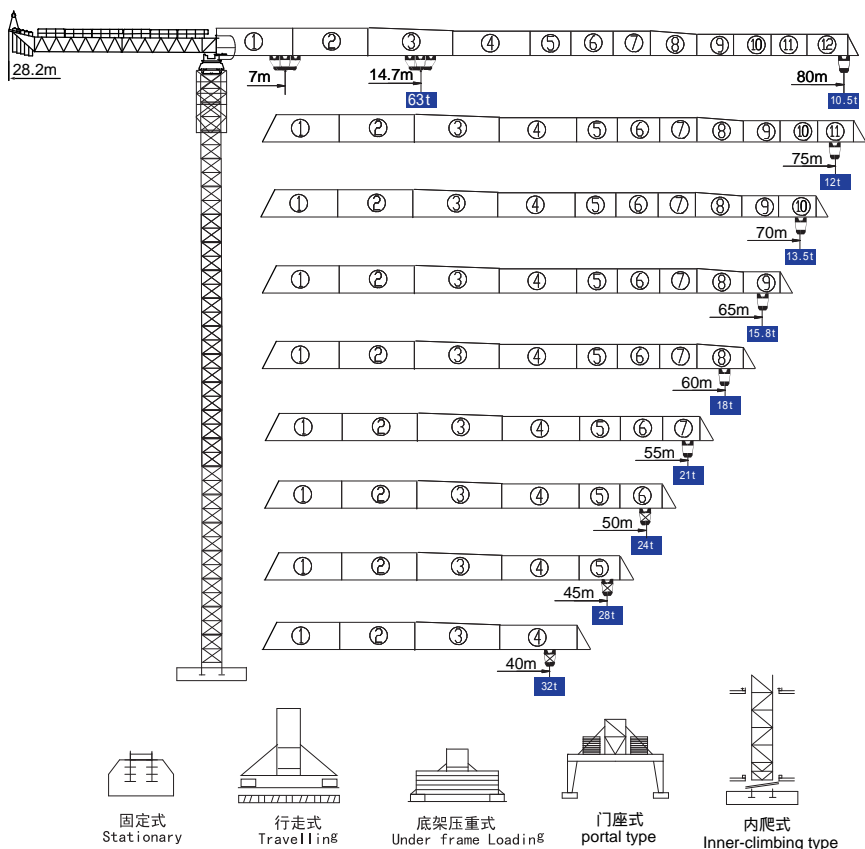


XT1200(80105-63)

外形尺寸

DIMENSIONS



* 可变换的其他安装方式同我们协商 Mounting possibilities Consult us

平头系列 Topless

XT1200(80105-63)

起重特性 Load Diagrams

起重臂 (m) jib	R _{min}	R (C _{max})	C _{max}	幅度 (m) Range																			
				10	15	20	25	30	35	40	45	50	55	60	65	70	75	80					
80m		7	43.4	21t	21000											20200	18000	16200	14600	13300	12200	11300	10500
		7	21.9	42t	42000				36500	29800	25000	21500	18700	16500	14600	13100	11800	10700	9800	9000			
		7	14.7	63t	63000	61600	45000	35000	28300	23500	20000	17200	15000	13100	11600	10300	9200	8300	7500				
75m		7	45.6	21t	21000											19000	17000	15500	14100	13000	12000		
		7	2.3	42t	42000				38500	31500	26500	22700	19800	17500	15500	14000	12600	11500	10500				
		7	15.4	63t	63000	47500	37000	30000	25000	21200	18300	16000	14000	12500	11100	10000	9000						
70m		7	47.1	21t	21000											19700	17700	16000	14600	13500			
		7	23.8	42t	42000				39900	32600	27500	23600	20600	18200	16200	14500	13100	12000					
		7	15.9	63t	63000	49200	38400	31100	26000	22100	19100	16700	14700	13000	11600	10500							
65m		7	50.3	21t	132LVF115B 21000											19000	17200	15800					
		7	25.4	42t	42000				35000	29500	25400	22200	19600	17500	15700	14300							
		7	17	63t	63000	52800	41200	33500	28000	23900	20700	18100	16000	14200	12800								
60m		7	52.1	21t	21000											19800	18000						
		7	26.3	42t	42000				36500	30700	26500	23100	20500	18300	16500								
		7	17.6	63t	63000	55000	43000	35000	29200	25000	21600	19000	16800	15000									
55m		7	55	21t	21000																		
		7	27.8	42t	42000				38600	32600	28100	24600	21800	19500									
		7	18.6	63t	63000	58200	45600	37100	31100	26600	23100	20300	18000										
50m		7	50	21t	21000																		
		7	30.2	42t	42000				35700	30800	27000	24000											
		7	20.2	63t	63000	50000	40800	34200	29300	25500	22500												
45m		7	45	21t	21000																		
		7	31.1	42t	42000				37000	31900	28000												
		7	20.8	63t	63000	51700	42200	35500	30400	26500													
40m		7	40	21t	21000																		
		7	31.2	42t	42000				37000	32000													
		7	20.8	63t	63000	51800	42300	35000	30500														

★ 其他起重性能需求，请与我们联系！ Any other lifting capacity, consult us!

配重配置 Ballast

Counter-jib ballast

9625 (kg) / 5000 (kg) / 2000 (kg)

		(kg)	PZ 9625	PZ 5000	PZ 2000
80m	28.2m	47500	4	1	2
75m	28.2m	47500	4	1	2
70m	28.2m	45500	4	1	1
65m	28.2m	45500	4	1	1
60m	28.2m	43500	4	1	0
55m	28.2m	38500	4	0	0
50m	28.2m	38500	4	0	0
45m	23.2m	53500	4	3	0
40m	23.2m	47500	4	1	2

XT1200(80105-63)

传动机构 Mechanisms

机构 Mechanisms	图例 Example	机构代号 Model	速度 (m/min) Speed	起重量 (t) Hoist Weight	容绳量 Rope Capacity	功率 (kW) Power	
起升 Hoisting		132LVF115B		0-29	21	917m > 917m*	132
				0-57	10.5		
				0-86	4		
				0-14.5	42		
				0-29	21		
				0-37.5	8		
				0-10	63		
				0-20	31.5		
				0-29	12		
变幅 Trolleying		24JXF33A	0~50 m/min			24	
回转 Slewing		180HP403-20/13	0~0.6r/min			3x18.5	
行走 Travelling		RT	0~16 m/min			8x11	
电源 Main Supply					~380V (±10%) 50Hz		
总功率 (不含顶升和行走) Gross Power (Excluding climbing and travelling)					211.5 kW		

★ 请与我们联系 Consult us, Please!

本样册技术参数不受法律约束, 具体以相应产品说明书为准

These brochure of specifications and data are not legally binding, specific instructions please based on our product manuals.

V. 2017-01A1