

For more information on XCMG products, dealer services,
and industry solutions, visit us on the web at www.xcmg.com

Jan 1, 2014
All Rights Reserved

Materials and specifications are subject to change without notice.
Featured machines in photos may include additional equipment.
See your XCMG dealer for available options.

apply to all similar docs: XCMG, WWW.XCMG.COM, their respective logos, "XCMG For Your Success",
as well as the corporate and product identity used herein,
are trademarks of XCMG and may not be used without permission.



XUZHOU CONSTRUCTION MACHINERY GROUP IMP. & EXP. CO., LTD



XCMG Headquarters, Xuzhou Economic Development Zone,
Jiangsu, China 221004



(+86-516) 87739230



XCMG Regional Departments:

West Asia & North Africa	(+86-516) 87739251 87739202 87739223
Asia-Pacific	(+86-516) 87739500 87739529 87739233
Central Asia	(+86-516) 87739218 87739239 87739510
North America	(+86-516) 87739285 87739551 87739713
South America	(+86-516) 87739196 87739714 87739187
Africa	(+86-516) 87739501 87739222 87739709
Europe	(+86-516) 87739238 87739271 87739228



export@xcmg.com



WWW.XCMG.COM

XCMG For Your Success

Engine model	SC9D220.2G2B1
Rated power(kW)	162
Operation mass(kg)	16700
Rated bucket capacity(m ³)	3.0
Total cycling time(s)	≤11

LW500FN

WHEEL LOADER

Sturdy • High-efficiency

Fully-adaptive Perfectly-upgraded



Performance advantages

- With traction force $\geq 16.0t$, breakout force $\geq 16.2t$ and dumping height $\geq 3.5m$, the machine realizes the optimal balance between efficiency and force thus takes the lead among similar machines.

Model Characteristics

- Energy-saving power train based on patented technology from XCMG.
- The 2,950mm wheelbase leads to both high working capacity and mobility.
- The rear frame made of high-strength steel plates welded in box shape is sturdy and reliable.
- The integrally-cast supporting lug has high wear and pressure resistance.
- The hinge joint adopts double-row tapered roller bearing, featuring high bearing capacity and long service life.
- Multiple configurations and complete work tools, completely adaptable to construction requirements of different areas and working conditions.
- Audio system in standard, extra-large space, sound insulation and noise reduction provides conformable operation environment.

EXCELLENT power and drive system

Powerful

- Tailored for XCMG, meet China II emission standard, high performance and low fuel consumption.
- Powerful and high torque reserve coefficient, able to meet instantaneous overload requirement instantly and provide power required for operations with heavy and large loads.



Patented Technologies Of XCMG

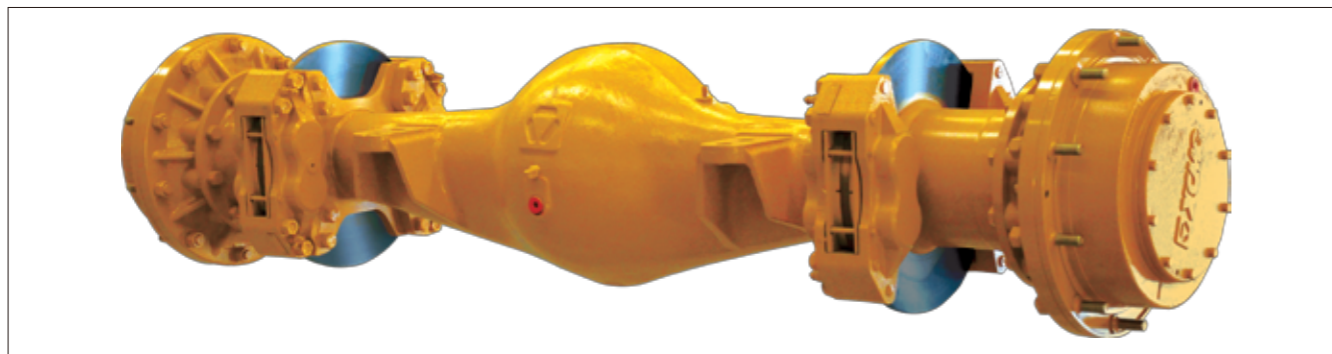
Energy-saving Gearbox And Torque Converter Assembly

- Dedicated large-capacity torque converter guarantees maximum utilization of engine power.
- Reinforced design, i.e. key load-bearing parts employing imported elements, which substantially improve overload capacity of gearbox.
- Flange of drive shaft complies with SAE/DIN international standard with increased diameter of fixing bolt circle, featuring extra-strong resistance to torque for continuous operation with high strength and heavy loads.

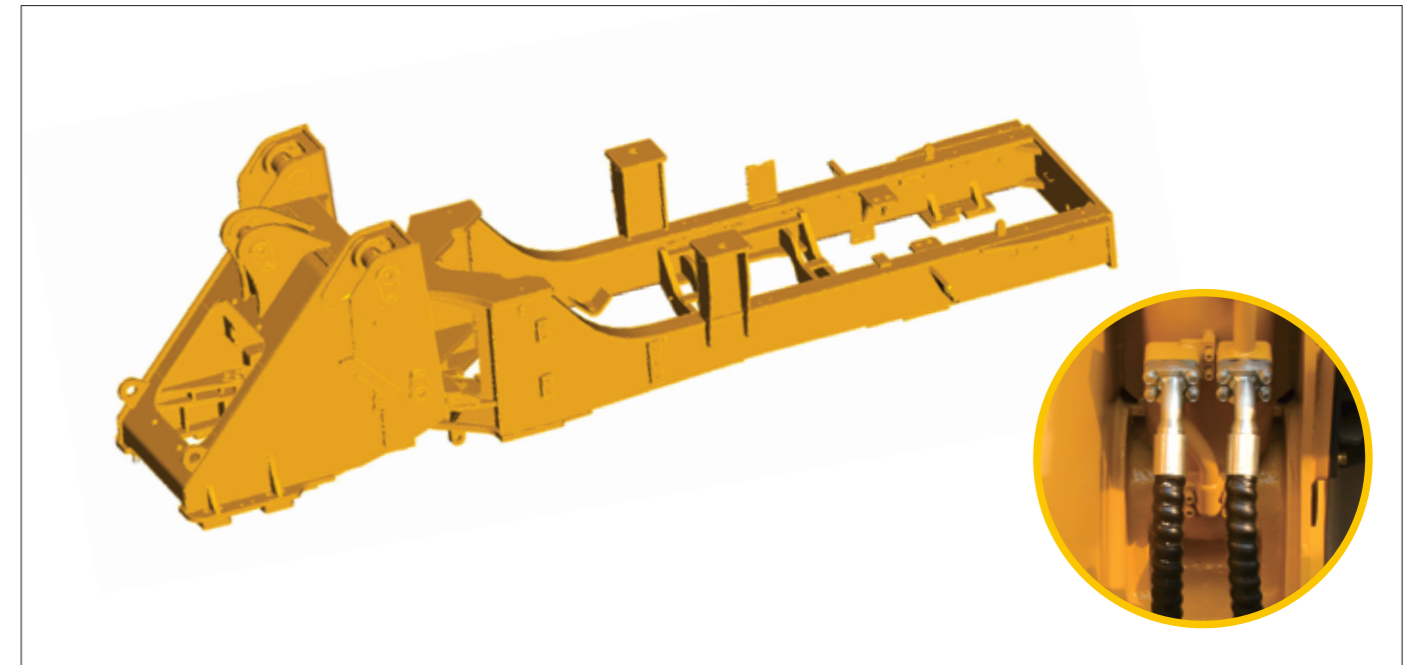


Excellent reinforced drive axle

- All load parts are thick and solid with good capacity against overload, satisfying requirements for various operations with high strength and large loads.

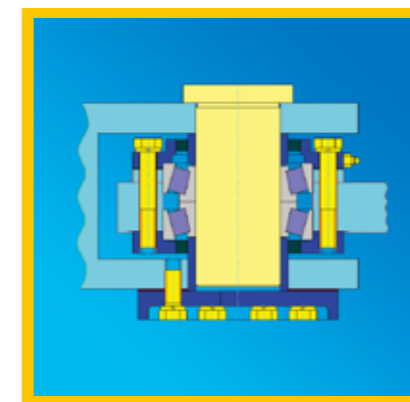


Extra-strong structural part WITH STANDING TRAILS AND ERRORS

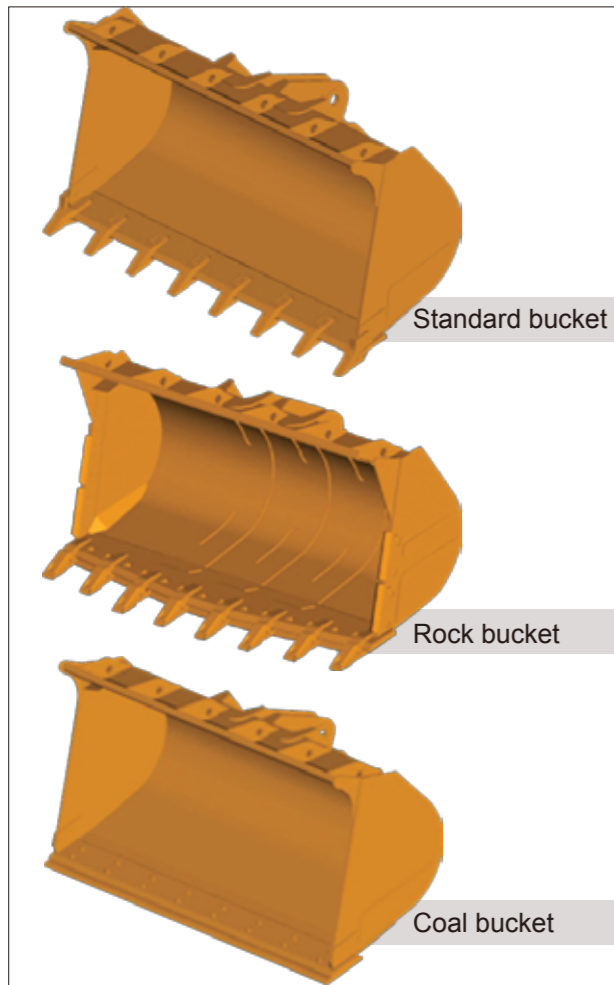


Frame Structure With Extra-strong Load-bearing Capacity

- Made of high-strength settle plates welded in box shape, the rear frame is sturdy and reliable.
- The integrally-cast supporting lug for movable arm avoids the occurrence of tearing.
- The hinge joint adopts double-row tapered roller bearing, featuring high bearing capacity and long service life.
- Technology of finite element analysis is employed to decrease stress concentration and eliminate local weaknesses, and is capable in various overload working conditions.



Design of wear-resistant bucket with high strength



Use Of Wear-resistant Material With High Strength

- Steel plates with high strength are used for buckets with resistance to wear and impact increased by over 30%, featuring longer service life.

Special Reinforcement Of Key Parts

- structural design of reinforcing rib plate is employed for key stressed parts to prevent distortion of bucket.

Utilization Of High Baffle Structure

- Reduces material scattering and guarantees maximum material loading capacity.

Optimized Lubricating Oil Duct

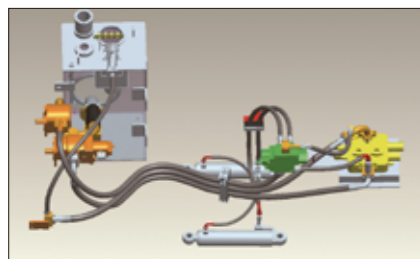
- Due to the fact that drilling is not applied in hinge pin connecting movable arm and bucket, strength and service life of hinge pin is more than doubled.

Diversified Bucket Design

- Standard bucket is universally applicable to various working conditions.
- Rock bucket is dedicated to solid materials, such as rock, resistant to wear and impact.
- Coal bucket is dedicated to loose materials, such as coal, featuring large volume and high efficiency.

Hydraulic and electrical element of international quality

- First-rate hydraulic elements, featuring low pressure loss, little system radiation and high part reliability.
- Hydraulic pump of international brand provides stronger hydraulic power.



- Italian α hydraulic hose featuring resistance to heat and pressure, and long service life.
- Two layers of sealing, i.e. 24° cone plus O-rings ring up to DIN international standard are employed for hydraulic pipelines, which features better tightness and effectively resolves the issue of leakage.
- Imported materials are used for harness with optimized process layout for guaranteeing circuit system reliability.

Timely and effective service ensures product may operate continuously with high efficiency.

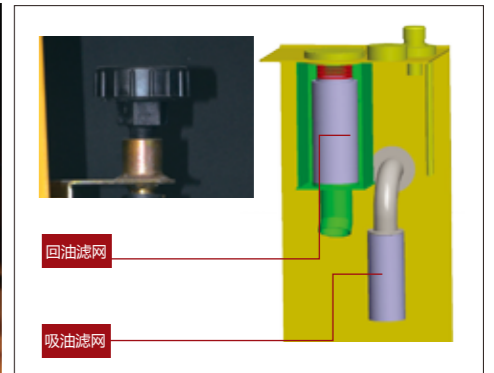


Implementation of “service throughout full life cycle” brings about trouble-free lifelong experience!

Marketing service network spread around the world covers extensive areas.

Easy and convenient maintenance

- Owing to the new frame structure of engine hood, top open side door and large opening angle, maintenance of engine and radiator becomes much easier.
- With the openable revolving oil tank, the maintenance of transmission becomes convenient and easy.
- With concentrated fuse box, operation status of electrical system is uniformly displayed and easy for maintenance.
- Measuring points for system pressure are concentrated, saving both time and labor for maintenance.
- Powder metallurgy dirt-proof respirator, sturdy and reliable, easy for maintenance.
- Oil return circuit of hydraulic oil tank is designed with independent cavity, guaranteeing convenient maintenance.



CAPACIOUS AND COMFORTABLE driving space

- Extra-large luxurious cab featuring large space and good view.
- Mold-pressing rubber floor, sealed dust prevention.
- Steering gear and seat with adjustable angle.
- MP3 player and FM & AM radio in standard configuration and luxurious audio system.
- Optional high-power heater & air conditioner.



Brand-new digital VDO combination instrument is artistically decent, operating elements and buttons at the fingertips can easily realize various operations.



Luxurious shock-absorption seat and steering gear adjustable at will cater to operation habits and operation requirements of operators with different figures.



Fully-covered exquisite interiors, processed cab and hood for damping noise reduction, reduce the noise by over 6dB and provide best operation environment.



Full-view rear window, RR wiper and equipment for reverse alarm provide good vision and safe reversing.



HUMAN-ORIENTED operation design guarantees safety and reduces fatigue

- Stable braking: four-wheel braking with air-over-oil caliper disc brake, featuring stable, safe and reliable braking.
- Flexible steering: full-hydraulic steering system, featuring light and flexible steering.
- Automatic leveling at high position: bucket is able to level automatically and keeps material near the damper for dumping at high position, increasing operation efficiency and reducing scattering of material during operation.



Various operation devices are suitable for requirements of different operations



Clamp: used for pick-up and transfer of various woods and pipe fittings.

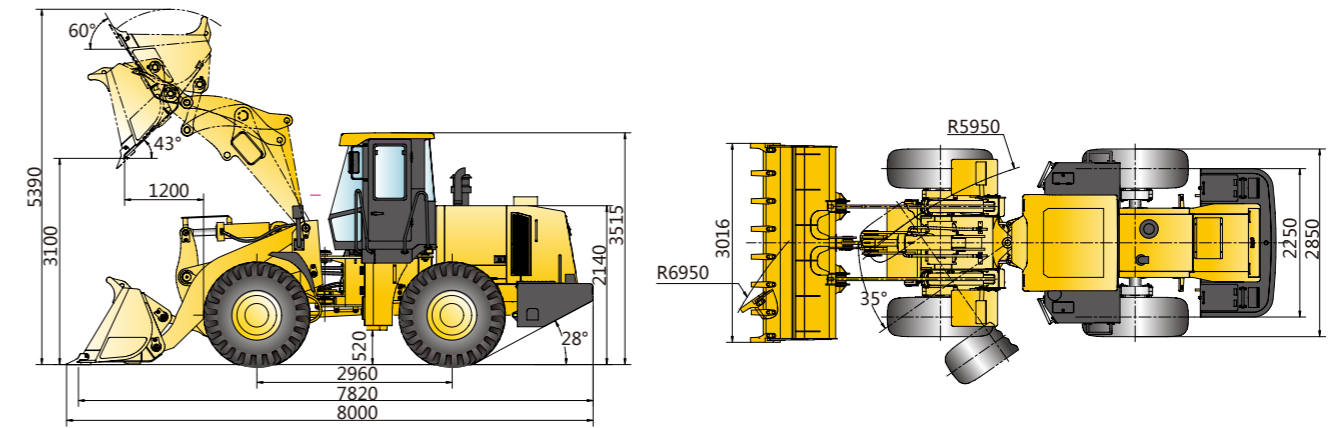
Grass-catch machines: Pick-up and transfer of various light materials, e.g. straw and paperboard.

Snow plow: used for removal of snow on highways and urban streets.

Parameters For Transforming Work Tools

Item	Clipping Plier I (Paired Teeth)	Clipping Teeth II (Staggered Teeth)	Toad's Mouth Clamp	Grasping Grass Machine	Snowplow	Sliding Fork	Unit
Rated load	5000	5000	5000	4500	-	5000	kg
Dumping height(main blade plate)(frontal dumping)	3230	3230	3230	3250	-	-	mm
Dumping distance(main blade plate)(frontal dumping)	1845	1845	1845	2050	-	-	mm
Horizontal lifting height	-	-	-	-	-	3737	mm
Maximum dumping angel	30	30	30	20	-	-	°
Maximum opening size	1955	1780	1900	2900	-	-	mm
Minimum clamping diameter	800	430	450	1472	-	-	mm
Max. working width(snowplow)	-	-	-	-	3800	-	mm
Slewing angle (horizontal)	-	-	-	-	±35	-	°
Swing angle (snowplow)	-	-	-	-	±6	-	°
Fork retracting angle	-	-	-	-	-	20	°
Length of work tool	-	-	-	-	-	2053	mm
Width of work tool	2356	2356	2390	2580	-	2516	mm
Height of work tool	-	-	-	-	-	1200	mm
Length of fort tooth	-	-	-	-	-	1200	mm
Overall demension: Length	8305	8305	8305	8560	8315	8350	mm
Overall demension: Width	2850	2850	2850	2850	3800	2850	mm
Overall demension: Height	3515	3515	3515	3515	3515	3515	mm

Overall Demension



Item	Standard Movable Arm			High Lift Unloading Arm		Unit
	Standard bucket	Rocket bucket	Enlarge bucket	Standard bucket	Enlarge bucket	
Bucket capacity: Stack loading	3.0m³	2.5m³	3.5m³	3.0m³	3.5m³	m³
Bucket capacity: Flat loading	2.5	2.1	3.0	2.5	3.0	m³
Width of bucket	3016	3000	3000	3016	3000	mm
Dumping height	3100	3120	3010	3500	3390	mm
Dumping distance	1200	1190	1300	1210	1340	mm
Working height (height-rising)	5390	5300	5480	5740	5850	mm
Total length	8000	8056	8030	8360	8360	mm
Turning radius (outside of bucket)	6950	6860	6880	7060	7060	mm
Digging depth : 0°	36	36	36	27	27	mm
10°	237	227	260	227	250	mm
Total weight	16700	17100	16965	16800	16800	kg
Rated working load	5000	5000	5000	4500	4500	kg

Main Specifications

Item	Specifications	Unit
Rated load	5000	kg
Rated bucket capacity	3.0	m³
Operation mass	16700	kg
Dumping height (from ground to main blade plate)	3100	mm
Dumping distance (from the front wheel to main blade plate)	1200	mm
Maximum breakout force	162	kN
Maximum traction force	160	kN
Lifting time of swing arm	≤6	s
Total cycling time	≤11	s
Minimum turning radius (outer edge of bucket)	6950	mm
Minimum turning radius (tire center)	5950	mm
Articulated angle	35	°
Gradeability	28	°
Tire size	23.5-25	
Overall demension(L × W × H)	8000×3016×3515	mm
Engine model	SC9D220.2G2B1	
Rated power/rotate speed	162/2000	kW/r/min
Travel speed	Gear I(F/R)	0~11.5/16.5
	Gear II(F)	0~38

With the advancement of technology, product structure, specifications are subject to change without notice. In the event of discrepancy between the information and the actual product, the specification of the actual product shall be used as reference.