

徐工徐工 助您成功
XCMG FOR YOUR SUCCESS



XGC120T 伸缩臂履带起重机 TELESCOPIC CRAWLER CRANE



地址(Add): 中国江苏省徐州市金山桥经济开发区桃山路19号 邮编(Postal Code): 221004
No.19 Taoshan Road, Economic development zone of jinshanqiao, Xuzhou, Jiangsu Province, China
统一服务热线(Unified service hotline): 86 400-110-9999
销售热线Sales Hotline
销售电话(Sale Tel): 86 0516-87892094
销售传真(Sale Fax): 86 0516-87892074
电子邮件(E-mail): jlyxld@xcmg.com
服务质量投诉电话
(Quality Supervision Tel): 86 0516-87892587

服务热线Service Hotline
服务电话(Service Tel): 86 400-001-5678
服务传真(Service Fax): 86 0516-87892080
备件电话(Service Tel): 86 0516-87892086
备件传真(Service Fax): 86 0516-87892083



欢迎访问徐工商城
省心更省钱一站式



欢迎关注徐工履带起重机官方微信
1. 直接扫码“XCMG_xgl” 添加好友
2. 查找公众账号“徐工履带起重机”
3. 直接扫描上方二维码

CONTENTS

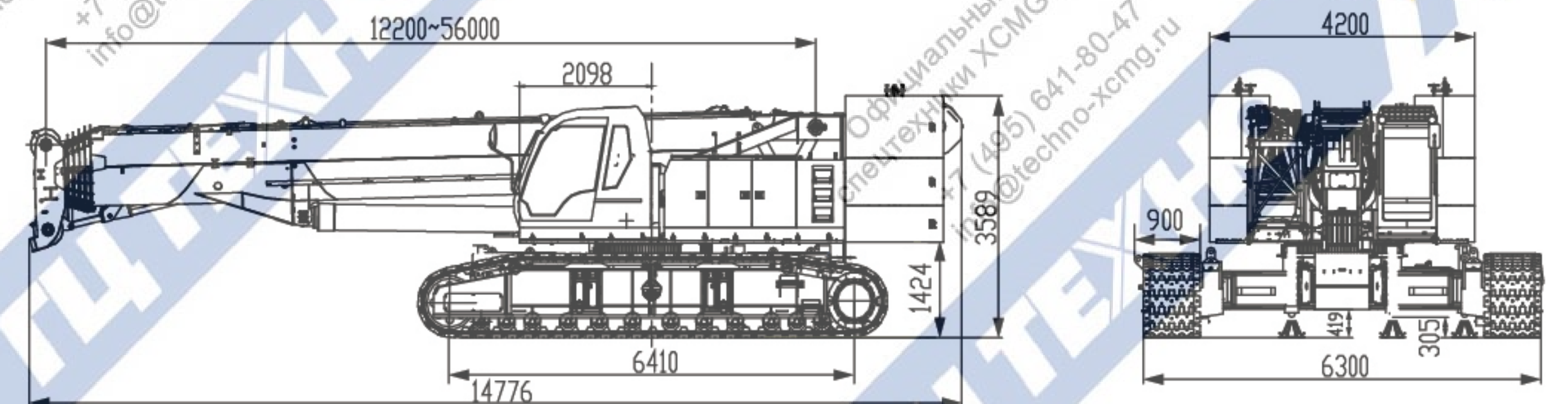
目录

P01	◆ 主要技术参数 The Main Technical Parameters
P02-P03	◆ 详细介绍 Brief Introduction
P04	◆ 作业范围图 Working Area
P05-P09	◆ 主臂起重性能表 Boom Lifting Load Chart
P10-P10	◆ 副臂起重性能表 Jib Lifting Load Chart
P11-P12	◆ 整机运输方案 Transport Planning
P13-P13	◆ 备忘录 Memo

主要技术参数 The Main Technical Parameters

类别 Type	项目 Items	单位 Unit	参数 Data	
尺寸参数 Dimension	整机全长 Overall length	mm	14776	
	整机全宽(伸/缩) Overall width (extension/retraction)	mm	6300/3996	
	整机全高 Overall height	mm	3589	
	主、从动轮中心距 Central distance from drive roller to driven roller	mm	6410	
	履带板宽 Track shoe width	mm	900	
重量参数 Weight	行驶状态总质量 Total mass in travel state	kg	115896	
	空载行驶速度 Max. travel speed with no load	km/h	2.3	
	满载行驶速度 Max. travel speed with full load	km/h	1.1	
	最小离地间隙 Min. ground clearance	mm	419	
	最大爬坡能力 Max. grade-ability	%	50	
行驶参数 Travel	接地比压 Ground pressure	MPa	0.09	
	发动机型号 Engine model	-	QSL	
	发动机额定功率 Engine rated output power	kW	242	
	发动机额定转速 Engine rated rotation speed	r/min	1800	
	发动机排放标准 Engine emission standard	-	非道路三阶段 off-road: U.S.EPA Tier 3/EU Stage IIIA	
容积参数 Capacity	液压油箱容积 Hydraulic oil tank	L	1000	
	燃油箱容积 Fuel tank	L	600	
主要性能参数 Main performance	最大额定总起重量 Max. rated lifting capacity	t	120	
	最小工作幅度 Min. rated working radius	m	2.5	
	最大起重力矩 Max. load moment	基本臂 Base boom	kN-m	4165
		基本臂 Base boom	m	13
	起升高度 Lifting height	最长主臂 Max. length boom	m	55.6
		最长主臂 + 副臂 Max. length boom + Jib	m	71.2
		基本臂 Base boom	m	12.2
	起臂长度 Boom length	最长主臂 Max. length boom	m	56
		最长主臂 + 副臂 Max. length boom + Jib	m	74.1
		副臂安装角 Jib offset angle	°	0, 15, 30
工作速度 Working speed	主臂起臂时间 Boom raising time	s	70	
	主臂全伸时间 Boom full extension time	s	425	
	最大回转速度 Max. slewing speed	r/min	1.8	
	起升速度(空载四层) Hoisting speed (no load at the 4th layer)	主起升机构 Main winch	m/min	140

本印刷品所包含的数据, 会随着产品的不断升级而改变, 请以实际产品为准
Pictures and data in this catalog will change with the update and modification of products, so please take the actual vehicle as reference.



详细介绍 Brief Introduction

上车 / Crane Superstructure

发动机 / Engine

美国原装进口康明斯QSL发动机 (U.S.EPA Tier 3/EU Stage IIIA)
额定功率/转速 : 242 KW/1800rpm.
燃油箱 : 有效容积600L.

Cummins QSL engine imported from the U.S.A (U.S.EPA Tier 3/EU Stage IIIA) , rated power / speed: 242 KW/1800rpm.
Fuel tank: effective capacity 600L.

起升机构 / Hoist Gear

起升机构描述 :	Hoist winch description:
空载起升速度 : 0 ~ 140m/min.	Hoisting speed with no load: 0~140m / min.
钢丝绳直径/长度 :	Wire rope diameter / length:
主卷钢丝绳 : 22mm/265m.	Main winch rope: 22mm/265m.
副卷钢丝绳 : 22mm/165m.	Auxiliary winch rope: 22mm/165m.
额定单绳拉力: 10.5t.	Rated single line pull: 10.5t.

变幅机构 / Luffing Gear

变幅机构描述 : 单缸前支变幅
主臂起臂时间≤70s

Luffing winch description: single cylinder front support luffing
Boom raising time≤70s

回转机构 / Slewing Gear

回转机构布置在转台后, 由马达驱动。
行星减速机, 与回转支承外啮合齿轮进行回转, 液压缓冲, 具有自由滑转功能, 保证作业安全。行星齿轮减速机具备常闭、片式制动器, 工作可靠维修方便。
回转支承采用三排滚柱外齿式回转支承, 承载能力强, 保证上车360°回转作业安全、平稳。
回转速度 : 1.8r/min

Slewing gear is on the left of the behind of turntable and driven by motor.

The planetary reducer is meshed with slewing bearing outer gear, hydraulic buffering, with free swing function to ensure operation safety. There is constant closed, disk-type brake for reliable operation and easy for maintenance.

Slewing gear: 3-row column outer slewing gear, with strong bearing capacity, ensuring superstructure 360°swing operation safe and reliable.

Swing speed: 1.8r/min

电气控制系统 / Electric Control System

采用ECU控制器、脚油门, 手油门, 通过CAN实现对发动机转速的高效控制。
系统采用供电方式为DC 24V, 负极搭铁单线制。采用PLC可编程控制器作为控制系统的核心, 系统由发动机控制、安全控制、先导控制、力矩限制器控制、辅助功能控制等几部分组成。通过显示器实时监测发动机水温、机油压力, 当超过安全临界值时, 蜂鸣器自动报警; 同时, 通过力限制器对当前工况的分析, 当吊重量、仰角或幅度任一值超出安全范围时, 三色报警灯和蜂鸣器会发出“声光报警”并通过程序控制, 限制危险动作的进行。

Use of ECU controller, foot accelerator, hand accelerator, efficient control of the engine speed by CAN. The system uses DC 24V for power supply, negative ground and single cable system. PLC programmable controller is used as the core of the control system, the system consists of several parts such as engine control, safety control, pilot control, load moment limiter control, auxiliary function control. Real-time monitoring through the display of engine temperature, oil pressure, buzzer warning when the load exceeds the safety limit; at the same time, analysis of current conditions such as lifting load weight, boom elevation angle or radius through load moment limiter, if any values exceed safe limits, a three-color warning light and buzzer will give "sound and light warning", and control and restriction of hazardous actions by program control.

液压系统 / Hydraulic System

电控负荷传感系统, 控制精准, 微动性好, 调速范围广。起重作业与行驶作业液压系统共用一恒功率140双泵, 回转系统采用闭式泵, 微动性好。

Controlled by electric proportional valve, with the features of accurate control, good fine motion function and wide speed adjustment range. Load lifting and crawler travel share one 140 constant power dual-pump, closed type pump is adopted for the slewing system with good fine motion performance.

下车 / Crane Carrier

下车包括车架、履带架、行走装置。车架和履带架采用插入式连接, 销轴限位。

Crane carrier comprises car-body, crawler track and travel gear. Car-body and crawler are using the plug-in connection.

履带伸缩 / Track Frame Extension/Retraction

通过履带伸缩缸实现履带梁的扩张与收缩, 方便转场及狭窄环境通过。

retraction is achieved by track frame telescopic cylinder, facilitate site transition and narrow environment through.

行走装置 / Travel Gear

由行走马达、减速机、驱动轮来实现整机的直线行走及转弯。空载行走速度改为0~2.3, 带载行走速度为0~1.1。

It realizes crane straight travel and steer through travel motor, reducer and drive roller. The travel speed for the crane with no load is changed to 0~2.3 while the travel speed with load is 0~1.1.

吊钩 / Hook Block

名称Name	100t吊钩 100t hook block	65t吊钩 65t hook block	7t吊钩 7t hook block
重量Weight (Kg)	1316	763	250
数量Qty.	1	1	1

平衡重 / Counterweight

由上车平衡重与下车压重两部分组成, 其中上车平衡重包含6块, 共34t; 下车压重由2块5t组成。起重施工时下车压重为必装件, 上车平衡重可根据具体吊重量、臂长、轨距进行选装。

序号	平衡重量(t)	平衡重组合方式
1	0	0
2	13	13
3	24	13+5+5+1
4	34	13+5+5+5+5+1

It is composed of superstructure counterweight and undercarriage counterweight, among which superstructure counterweight is composed of 6 slabs, total 34t; undercarriage counterweight is made up of two 5t slabs. When the crane is used for construction work, undercarriage counterweights must be installed, superstructure counterweight can be installed optionally according to the detailed load weight, boom length and track span.

Superstructure counterweight combination:

No.	Counterweight weight(t)	Counterweight combination
1	0	0
2	13	13
3	24	13+5+5+1
4	34	13+5+5+5+5+1

安全装置 / Safety Devices

安全装置包括急停开关、先导控制开关、力矩限制器、起升高度限制器、水平仪、回转锁止装置、三圈保护器等。

Safety devices comprise emergency stop switch, pilot control switch, load moment limiter, hoist limit switch, level meter, slewing locking device, rope-end limiter, etc.

紧急停止 / Emergency Stop Switch

按下急停开关, 发动机熄火, 整车动作停止。

Press the emergency stop switch to stop the engine, and to stop all the machine movements.

先导控制开关 / Pilot Control Switch

按下开关后, 起重作业电气系统才能正常操作。

Press the switch, the electric system for lifting operation starts to a normal work.

力矩限制器 / Load Moment Limiter

当吊重量大于额定起重量, 吊臂仰角超出额定范围时, 或幅度超出额定范围时, 力矩器会发出信号, 限制危险动作的继续进行。

The LMI will send our alarm signal to prevent dangerous movement when the lifting capacity exceeds the rated capacity, boom angle exceeds rated area or radius exceeds rated area.

起升高度限位器 / Height Limiter

由主、副臂端部限位开关和重锤构成, 当吊钩中心起升至距吊臂滑轮中心约710mm时, 起升动作自动停止。

It consists of boom and jib end limit switch and the weight, which will automatically stop the hoisting movement when hook block center is raised 710mm to boom sheave center.

水平仪 / Level Meter

转台内部、回转支承上方装有水平仪, 监控地面是否满足作业要求。

A level meter is set inside the turntable and on the top of swing, to monitor the ground surface for operation requirements.

回转锁止装置 / Slewing Locking Device

保证运输时转台有效锁止, 防止其自由滑转。

The device is used to lock the turntable during transport to avoid free swing.

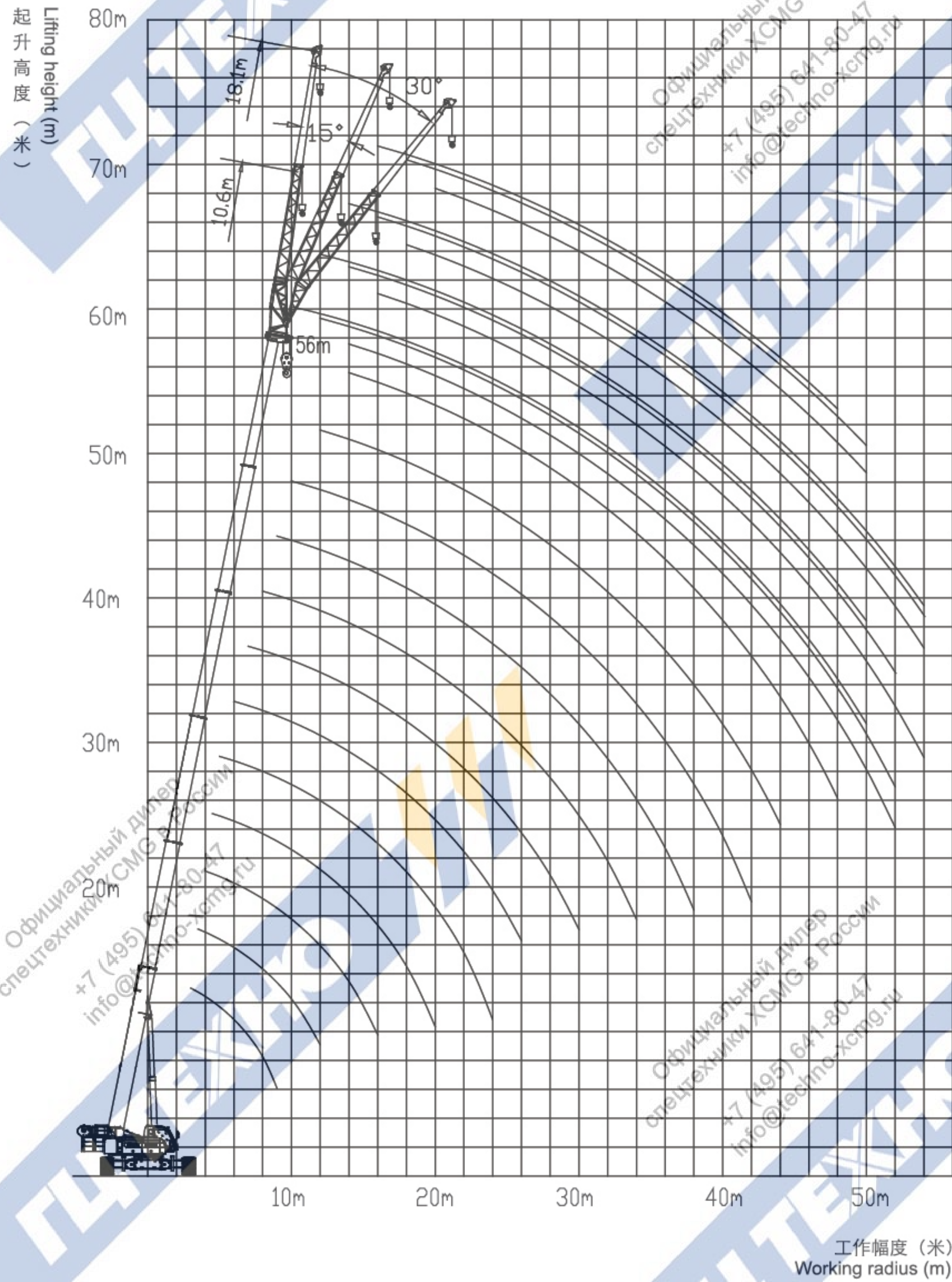
三圈保护器 / Rope-end Limiter

当吊钩下降至卷扬钢丝绳剩余三至五圈时, 落钩自动停止。

The device is used to stop hook block lowering when the hook block lowering down and only three to five turns of wire rope left on the winch drum.

作业范围图
Working Area

Официальный дилер
спецтехники XCMG в России
+7 (495) 641-80-47
info@techno-xcmg.ru



主臂起重性能表
Boom Lifting Load Chart

Официальный дилер
спецтехники XCMG в России
+7 (495) 641-80-47
info@techno-xcmg.ru

主臂工况，履带全伸，静止吊载（不行走），上车配重34t
Boom working condition, crawler fully extends, static lifting (no travel), superstructure counterweight 34t.

幅度 Radius	臂架长度															
	12.2	16.1	20.1	24	28	31.9										
2.5	120															
3	100															
3.5	99	94.1	82.5	52.5												
4	98.6	90.8	78.6	49.7	88.4	53.9	33.1									
4.5	87.2	86.5	73.3	47.0	83.2	51.6	31.1	65.0	54.2	32.5						
5	85	79.1	68.7	44.7	76.3	49.2	29.4	60.4	52.2	30.8	55.2	54.3	26.2			
6	70	68.0	61.0	40.6	64.2	45.0	26.6	56.3	47.9	27.9	54.1	50.5	23.7	50.8	30.9	24.3
7	59.4	58.9	58.1	36.9	57.8	41.6	24.0	51.5	43.4	25.2	51.5	46.5	21.7	47.6	28.6	22.4
8	50.9	50.5	52.2	33.7	51.9	38.3	22.2	48.3	39.6	23.2	48.2	42.9	19.8	44.3	26.6	20.7
9	45	45.0	46.8	31.3	46.9	34.9	20.4	44.5	37.6	21.5	44.8	39.7	18.3	41.2	24.9	19.1
10		39.4	39.9	29.3	39.8	32.2	18.8	39.5	34.3	19.9	39.0	36.8	16.9	38.5	23.2	17.7
12		29.7	28.9	25.8	29.7	28.1	16.3	29.8	28.7	17.4	30.2	31.5	14.8	30.7	20.7	15.4
14					23.3	22.1	14.5	23.0	25.1	15.4	23.9	25.1	13.1	24.6	18.5	13.7
16					18.7	19.7	13.0	18.5	20.5	13.9	19.3	20.5	11.6	20.1	16.7	12.1
18								15.2	17.1	12.5	15.9	17.1	10.4	16.7	15.3	10.9
20								12.6	14.5	11.3	13.3	14.5	9.4	14.1	14.1	9.9
22											11.3	12.4	8.6	12.0	13.0	9.0
24											9.6	10.7	7.8	10.3	11.3	8.3
26													9.0	9.9	7.6	
臂架组合	00000	00100	00010	00001	01100	00011	00002	11100	00111	00012	11110	01111	00022	11111	01112	00122

主臂起重性能表
Boom Lifting Load Chart

主臂工况，履带全伸，静止吊载（不行走），上车配重34t
Boom working condition, crawler fully extends, static lifting (no travel), superstructure counterweight 34t.

幅度 Radius	臂架长度												
	35.9	39.9	43.9	47.9	51.9	56							
7	35.0	29.5	19.9										
8	32.9	27.6	18.3	28.9	21.8	18.6							
9	30.5	25.9	16.9	27.0	20.4	17.3	22.9	17.4	17.2				
10	28.3	24.4	15.7	25.3	19.2	16.2	21.7	16.4	16.3	18.2	16.0		
12	24.6	21.8	13.9	22.3	17.1	14.3	19.5	14.7	14.5	16.8	14.5	12.4	
14	21.6	19.7	12.1	19.7	15.3	12.8	17.5	13.3	13.1	15.2	13.2	11.9	10.7
16	19.7	18.0	10.8	17.5	13.9	11.5	15.4	11.9	11.8	13.5	12.1	11.3	10.1
18	16.4	16.4	9.7	15.8	12.6	10.3	13.8	10.9	10.7	12.0	11.1	10.5	9.1
20	13.8	14.7	8.7	13.5	12.3	9.3	12.2	9.9	9.7	10.8	10.1	9.4	8.2
22	11.7	12.6	7.9	11.8	10.6	8.6	10.7	9.1	8.8	9.7	9.2	8.6	7.4
24	10.1	10.9	7.3	10.1	9.8	7.9	9.5	8.4	8.1	8.8	8.4	7.8	6.7
26	8.7	9.5	6.7	8.7	9.1	7.3	8.7	7.7	7.4	8.0	7.7	7.1	6.1
28	7.5	8.3	6.2	7.5	8.5	6.8	7.5	7.3	6.8	7.2	7.1	6.3	5.6
30	6.5	7.3	5.7	6.5	7.6	6.3	6.7	6.7	6.2	6.4	6.5	5.7	5.1
32				5.7	6.8	5.8	5.9	6.4	5.8	5.9	6.1	5.1	4.6
34				4.9	6.0	5.5	5.1	5.9	5.3	5.1	5.6	4.7	4.2
36							4.5	5.4	5.0	4.6	5.3	4.1	4.0
38							3.9	4.9	4.7	4.2	4.8	3.9	3.3
40										3.6	4.2	3.5	3.0
42										3.2	3.8	3.3	2.8
44											3.0	2.6	
46												2.7	2.4
48													2.2
50													1.9
臂架组合	21111	11112	00222	22111	11122	01222	22211	11222	02222	22221	12222	22222	33333

主臂工况，履带全伸，带载行驶，上车配重34t
Boom working condition, crawler fully extends, travel with a load, superstructure counterweight 34t.

幅度Radius	12.2	16.1	20.1	24	28	31.9	35.9	39.9
3	90.0							
3.5	89.1	75.3	57.8					
4	88.7	72.6	55.0	70.7	35.0			
4.5	78.5	69.2	51.3	66.6	33.5	52.0	32.5	
5	72.3	59.3	48.1	57.2	32.0	45.3	31.3	41.4
6	59.5	51.0	42.7	48.2	29.3	42.2	28.8	40.6
7	44.6	44.2	40.7	43.4	27.1	38.6	26.0	37.1
8	35.6	37.9	36.5	38.9	24.9	33.8	23.8	31.3
9	31.5	30.6	32.8	31.9	22.7	30.2	22.6	30.4
10		25.6	27.9	25.9	20.9	25.7	20.6	25.4
12		19.3	20.2	19.3	18.3	19.4	17.2	19.6
14				15.1	14.3	15.0	15.1	15.5
16				12.2	12.8	12.0	12.3	12.5
18					9.8	10.3	10.4	9.4
20					8.2	8.7	8.7	8.0
22							7.3	6.8
24							6.2	5.9
26								5.4
28								
30								4.5
32								3.9
34								2.8
臂架组合	00000	00100	00010	01100	00011	11100	00111	11110
							01111	11111
								21111
								22111

主臂起重性能表
Boom Lifting Load Chart

主臂工况，履带全缩，静止吊载，上车配重24t

Boom working condition , crawler fully retracts , static lifting , superstructure counterweight 24t.

幅度 Radius	臂架长度															
	12.2	16.1			20.1			24		28			31.9			
4	65.9															
4.5	56.8															
5	49.6	47.3	48.5		44.4			41.2		39.7						
6	37.4	37.9	38.9	39.4	36.0	38.2		33.6	36.5	32.7			32.0			
7	29.1	30.6	31.5	31.9	29.9	32.0	24.0	28.0	30.8	25.2	27.6	29.3		27.2	28.6	
8	23.4	24.8	25.6	26.0	25.0	26.8	22.2	23.8	26.4	23.2	23.6	25.2	19.8	23.5	24.9	20.7
9	19.1	20.6	21.2	21.7	20.9	22.7	20.4	20.4	22.6	21.5	20.4	21.9	18.3	20.5	21.9	19.1
10		17.3	17.9	18.3	17.6	19.3	18.8	17.4	19.6	19.9	17.7	19.0	16.9	18.0	19.1	17.7
12		12.6	13.2	13.6	13.0	14.6	14.9	12.8	14.9	15.4	13.5	14.8	14.8	13.9	15.0	15.4
14					9.8	11.3	11.6	9.6	11.6	12.2	10.3	11.6	12.6	11.1	12.1	12.6
16					7.5	8.9	9.3	7.3	9.3	9.8	8.0	9.2	10.2	8.7	9.8	10.3
18								5.6	7.5	8.0	6.3	7.4	8.4	7.0	8.0	8.5
20								4.2	6.1	6.6	4.9	6.0	7.0	5.6	6.6	7.0
22											3.8	4.9	5.8	4.5	5.5	5.9
24											2.9	4.0	4.9	3.6	4.5	5.0
26														2.8	3.8	4.2
臂架组合	00000	00100	00010	0000	01100	00011	00002	11100	00111	00012	11110	01111	00022	11111	01112	00122

主臂工况，履带全缩，静止吊载，上车配重24t

Boom working condition , crawler fully retracts , static lifting , superstructure counterweight 24t.

幅度 Radius	臂架长度														
	35.9		39.9			43.9			47.9			51.9		56	
7	25.6	27.0													
8	22.1	23.4	18.3	21.3	21.8	18.6									
9	19.3	20.6	16.9	18.6	20.2	17.3	18.2	17.4	17.2						
10	17.0	18.2	15.7	16.4	17.9	16.2	16.1	16.4	16.3	15.9	16.0				
12	13.3	14.2	13.9	12.9	14.1	14.3	12.6	13.8	14.0	12.5	13.2	12.4			
14	10.5	11.4	12.1	10.2	11.4	11.8	10.0	11.1	11.3	10.0	10.7	9.9	9.6		
16	8.4	9.3	10.2	8.2	9.3	9.8	8.1	9.1	9.3	8.1	8.8	8.1	7.8		
18	6.7	7.6	8.5	6.7	7.8	8.2	6.6	7.6	7.8	6.6	7.3	6.7	6.5		
20	5.3	6.2	7.1	5.4	6.5	6.9	5.4	6.4	6.6	5.5	6.1	5.6	5.4		
22	4.2	5.1	6.0	4.2	5.4	5.8	4.4	5.4	5.6	4.5	5.1	4.6	4.5		
24	3.3	4.2	5.0	3.3	4.5	4.9	3.5	4.5	4.8	3.7	4.3	3.8	3.7		
26	2.6	3.4	4.2	2.6	3.7	4.1	2.8	3.8	4.0	3.0	3.6	3.2	3.1		
28	1.9	2.7	3.6	1.9	3.0	3.4	2.1	3.1	3.3	2.4	3.0	2.6	2.5		
30	1.3	2.2	3.0	1.4	2.4	2.9	1.6	2.5	2.7	1.8	2.5	2.2	2.1		
32					2.0	2.4		2.0	2.2	1.4	2.0	1.7	1.7		
34					1.5	1.9		1.6	1.8		1.5	1.3	1.3		
36								1.2	1.4		1.1				
臂架组合	21111	11112	00222	22111	11122	01222	22211	11222	02222	22221	12222	22222	33333		

副臂起重性能表 Jib Lifting Load Chart

副臂工况，履带全伸，静止吊载，上车配重34t

Jib working condition, crawler fully extends, static lifting, superstructure counterweight 34t.

R/L	副臂长度 18.1m								
	主臂47.9			主臂51.9			主臂56		
副臂角度	0°	15°	30°	0°	15°	30°	0°	15°	30°
14	3.2								
16	3.0			3.2					
18	2.9	2.2		3.0			3.0		
20	2.8	2.2		2.8	2.2		2.8		
22	2.7	2.1	1.9	2.8	2.1		2.8	2.0	
24	2.6	2.0	1.8	2.6	2.0	1.8	2.6	2.0	
26	2.6	2.0	1.8	2.6	2.0	1.8	2.6	2.0	1.6
28	2.4	2.0	1.7	2.4	2.0	1.6	2.4	2.0	1.6
30	2.4	2.0	1.7	2.4	2.0	1.6	2.4	1.8	1.6
32	2.2	1.8	1.6	2.2	1.8	1.6	2.1	1.8	1.6
34	2.2	1.8	1.6	2.2	1.8	1.6	2.0	1.8	1.6
36	2.2	1.8	1.6	2.0	1.8	1.6	1.8	1.8	1.5
38	2.1	1.8	1.6	2.0	1.8	1.6	1.7	1.5	1.5
40	2.0	1.8	1.6	1.9	1.8	1.6	1.5	1.4	1.3
42	2.0	1.7	1.6	1.6	1.6	1.5	1.2	1.4	1.3
44	2.0	1.6	1.5	1.5	1.5	1.4	1.1	1.3	1.3
46	1.8	1.6	1.4	1.5	1.5	1.4	1.1	1.2	1.2
48	1.8	1.6	1.4	1.5	1.5	1.4	1.0	1.1	1.1
50	1.7	1.6	1.4	1.4	1.3	1.2	0.9	1.1	0.9
52		1.5	1.4	1.4	1.3	1.2			
54			1.3	1.2	1.3	1.2			
伸缩组合	12222			22222			33333		

整机运输方案 Transport Planning

根据主体运输方案的不同，主要介绍以下两种运输方案，具体如下：

According to different transport scheme of basic machine, two transport plans are introduced, which are as follows:

■ 运输方案一 / Transport plan I

车辆1运输信息：

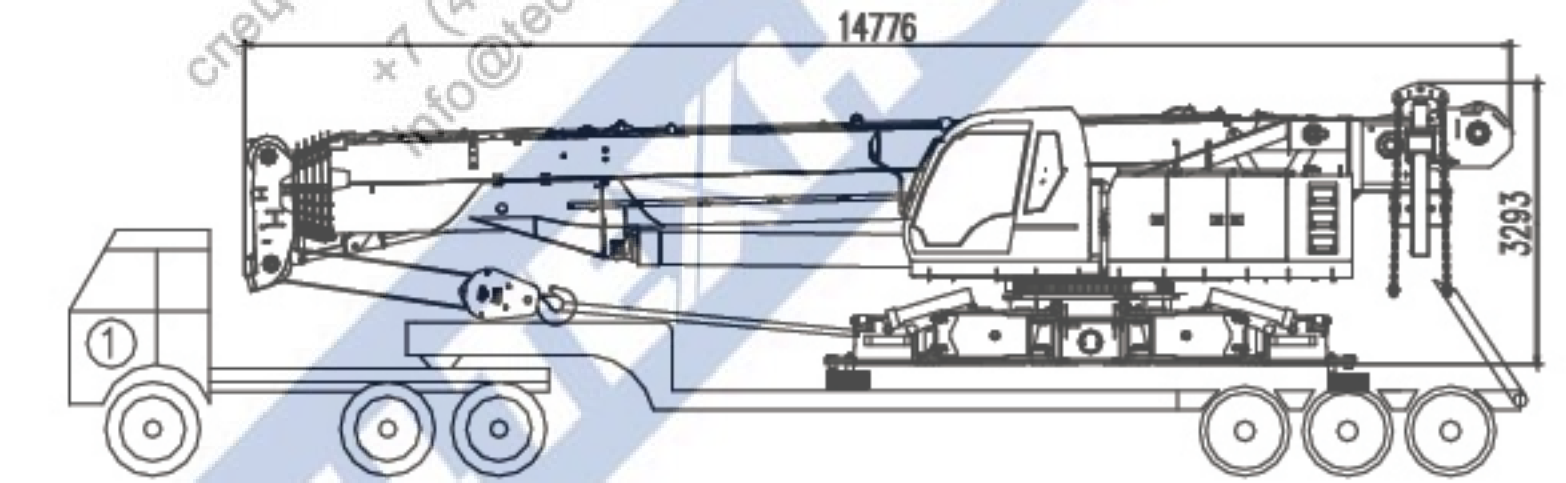
主体运输方案一，拆除履带梁、平衡重、走台板，含65t吊钩
总重：45.6t

运输尺寸：14.776×3.0×3.293m

Transport vehicle 1 information :

Transport plan I of basic machine, in which the track frame, counterweight, catwalk are removed, 65t hook block are included.
Total weight : 45.6t ,

Transport dimension : 14.776×3.0×3.293m



车辆2运输信息：

转台配重 (含1块13t配重、3块5t配重、1块1t配重)

总重：29t

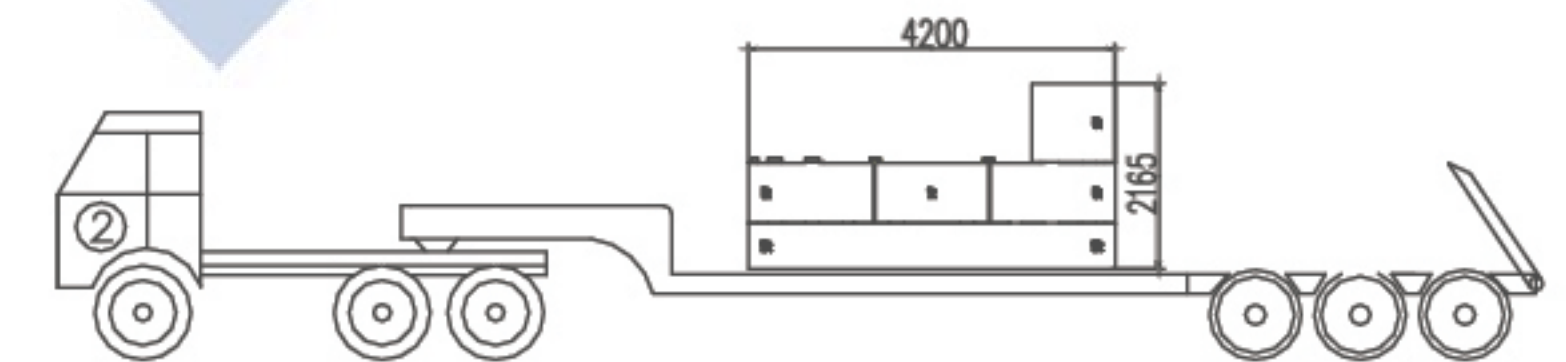
运输尺寸：4.2×2.55×2.165m

Transport vehicle 2 information :

Turntable counterweight (with one 13t counterweight, three 5t counterweights, one 1t counterweight)

Total weight : 29t

Transport dimension : 4.2×2.55×2.165m



车辆3运输信息：

履带梁 (2条, 单条12.6t)、转台配重 (1块, 共5t)

总重：30.2t

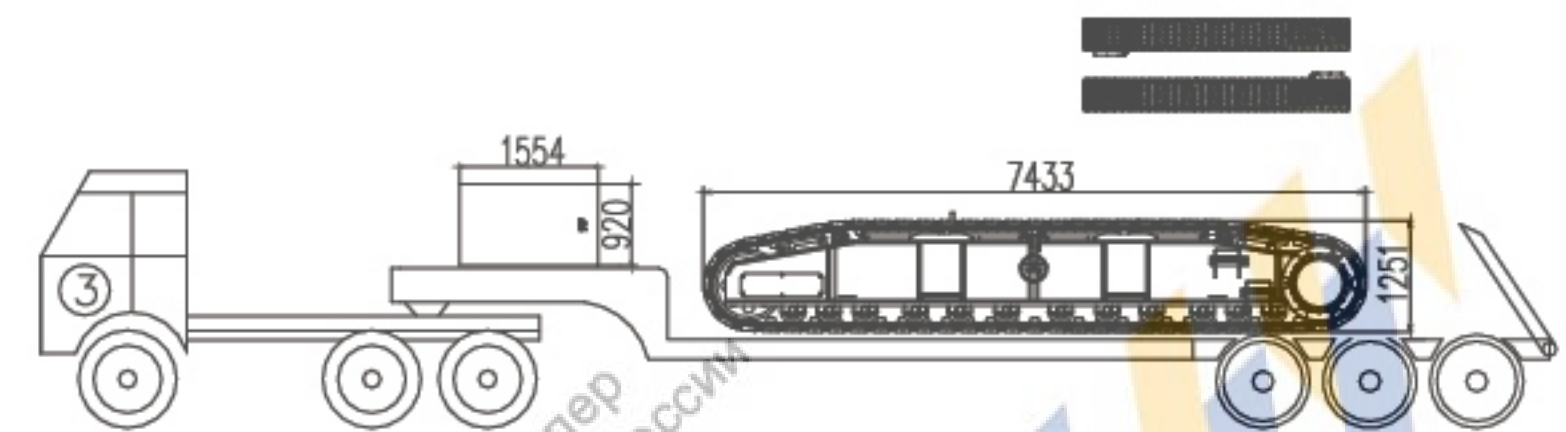
运输尺寸：9.003×3.0×1.251m

Transport vehicle 3 information :

Track frame (2 pieces, each 12.6t), turntable counterweight (1 piece, total 5t)

Total weight : 30.2t

Transport dimension : 9.003×3.0×1.251m



车辆4运输信息：

中央平衡重 (2块, 单块5t)、吊钩 (100t、7t各一个)、走台板 (10块)

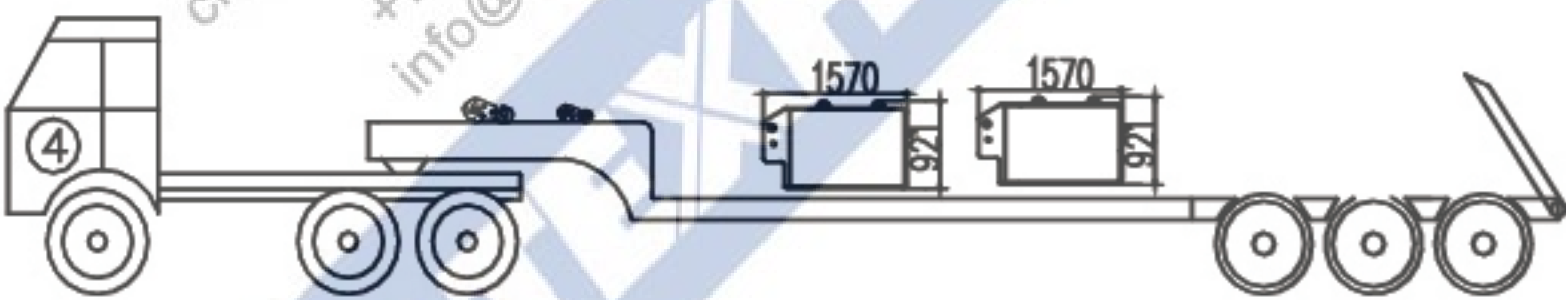
总重：11.72t

运输尺寸：4.14×2.55×0.921m

Central counterweight (2 pieces, each 5t), hook block (one 100t hook, one 7t hook), decking plate (10 pieces)

Total weight : 11.72t

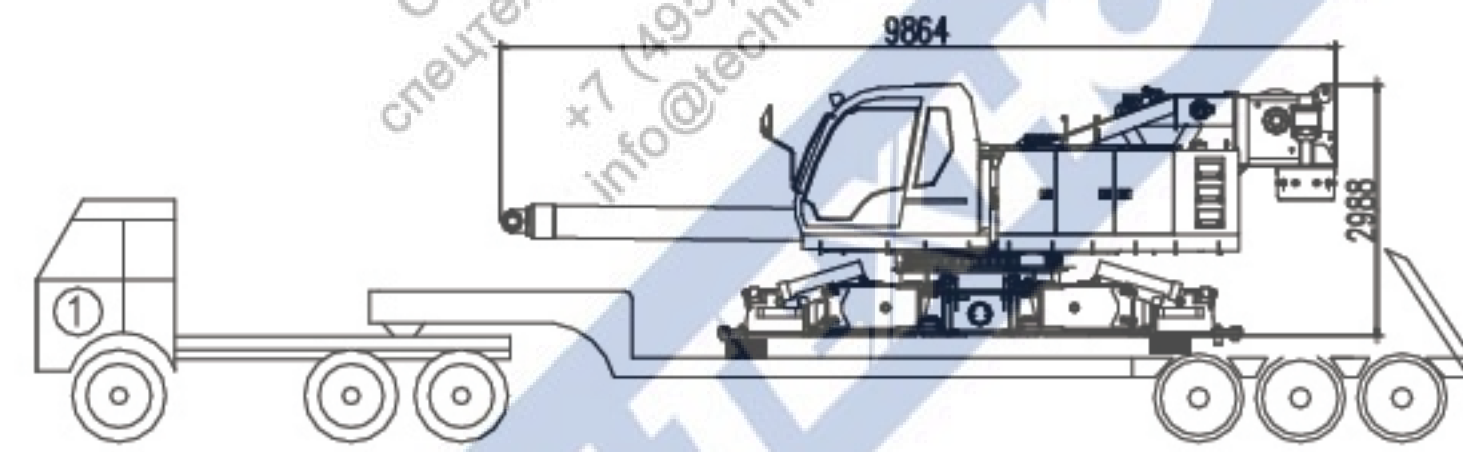
Transport dimension : 4.14×2.55×0.921m



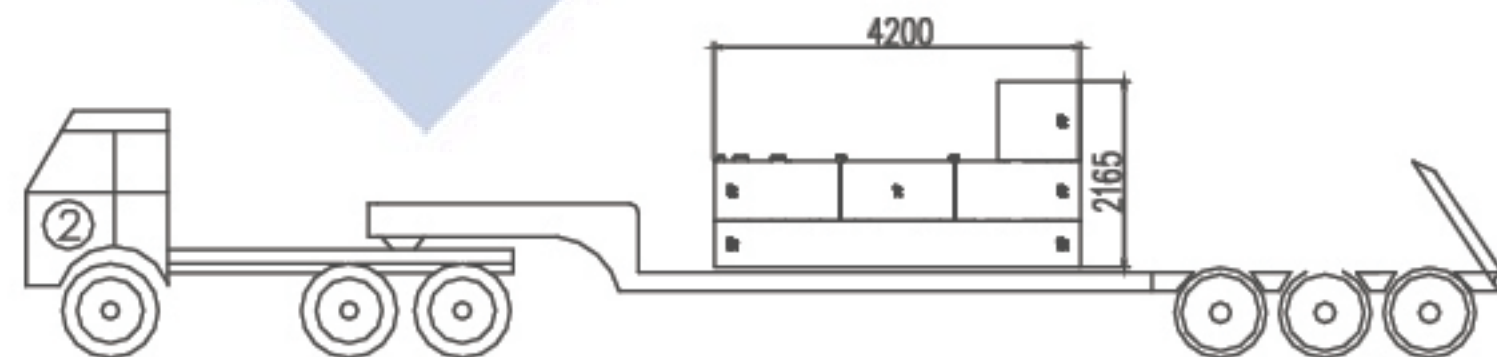
整机运输方案 Transport Planning

■ 运输方案二 / Transport plan II

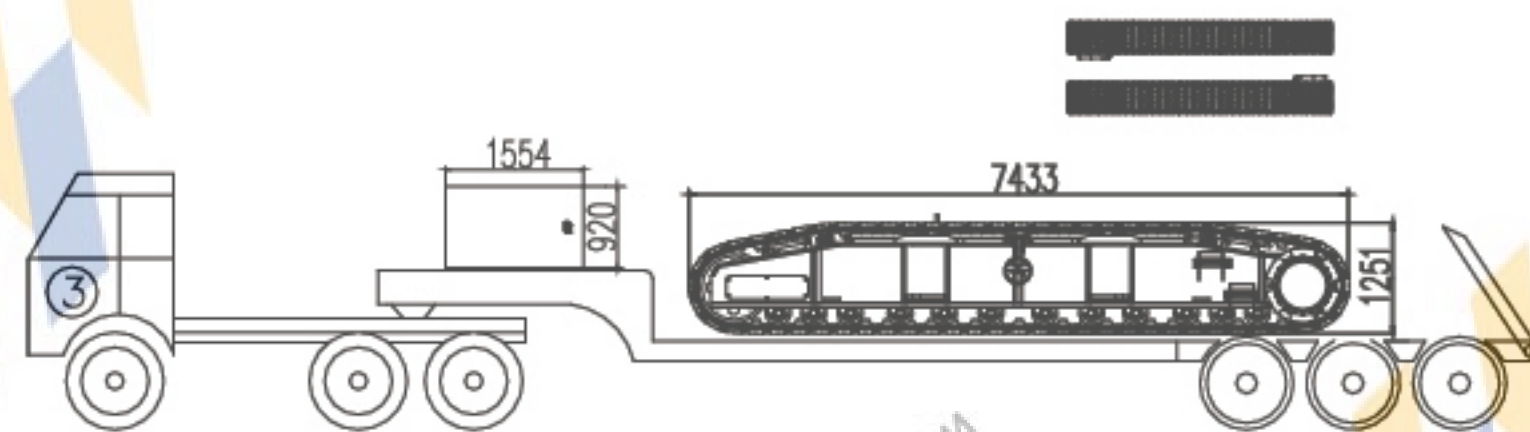
车辆1运输信息：
在主体运输方案一基础上，拆除臂架系统、副卷、变幅油缸等，其中变幅油缸需用附属装置固定。
总重：29.2t
运输尺寸：9.864×3.0×2.988m
Transport vehicle 1 information：
On the basis of transport plan I, remove boom system, auxiliary winch, luffing cylinder and etc., the luffing cylinder needs to be fixed with an accessory device.
Total weight : 29.2t
Transport dimension : 9.864×3.0×2.988m



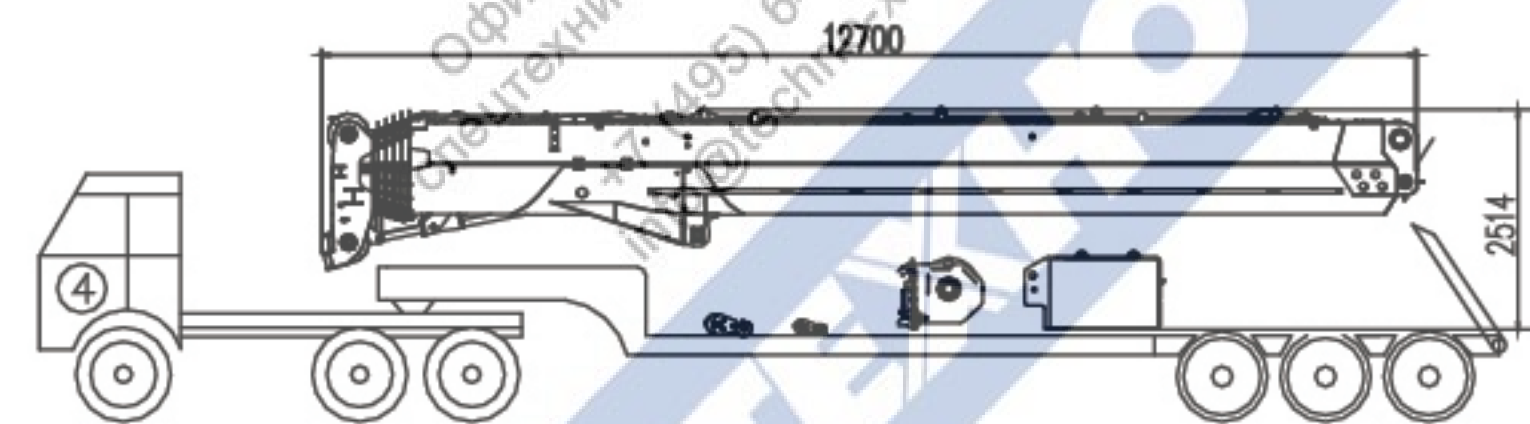
车辆2运输信息：
转台配重（含1块13t配重、3块5t配重、1块1t配重）
总重：29t
运输尺寸：4.2×2.55×2.165m
Transport vehicle 2 information
Turntable counterweight (with one 13t counterweight, three 5t counterweights, one 1t counterweight)
Total weight : 29t
Transport dimension : 4.2×2.55×2.165m



车辆3运输信息：
履带梁（2条，单条12.6t）、转台配重（1块，共5t）
总重：30.2t
运输尺寸：9.003×3.0×1.251m
Transport vehicle 3 information
Track frame (2 pieces, each 12.6t), turntable counterweight (1 piece, total 5t)
Total weight : 30.2t
Transport dimension : 9.003×3.0×1.251m



车辆4运输信息：
主臂（全缩状态）、副臂（1套，两节折叠）、副卷（含钢丝绳）、配重提升油缸、中央平衡重（2块，单块5t）、吊钩（100t、7t各一个）、走台板（10块）
总重：29.81t
运输尺寸：12.7×2.55×3.0m
Transport vehicle 4 information：
Boom (fully retracted), jib (one set, two jib sections folded), auxiliary winch (with wire rope), counterweight lifting cylinder, central counterweight (2 pieces, each 5t), hook block (one 100t hook, one 7t hook), decking plate (10 pieces)
Total weight : 29.81t
Transport dimension : 12.7×2.55×3.0m



备忘录 Memo

Official XCMG Russia
Specialist Technician
+7 (495) 641-80-47
info@techno-xcmg.ru

Official XCMG Russia
Specialist Technician
+7 (495) 641-80-47
info@techno-xcmg.ru

Official XCMG Russia
Specialist Technician
+7 (495) 641-80-47
info@techno-xcmg.ru

Official XCMG Russia
Specialist Technician
+7 (495) 641-80-47
info@techno-xcmg.ru