



All Rights Reserved

Materials and specifications are subject to change without notice. Featured machines in photos may include additional equipment. See your XCMG dealer for available options.

"XCMG", "WWW.XCMG.COM", "XCMG For Your Success", as well as the corporate and product identity used herein, are trademarks of XCMG and may not be used without permission.



RT55E

Rough Terrain Wheeled Crane

Официальный дилер спецтехники XCMG в России
+7 (495) 641-80-47
info@techno-xcmg.ru

Официальный дилер спецтехники XCMG в России
+7 (495) 641-80-47
info@techno-xcmg.ru

www.xcmg.com

XCMG Regional Departments:

Europe (+86-516) 87739238 87739271 87739228

West Asia & North Africa (+86-516) 87739251 87739202 87739223

Asia-Pacific (+86-516) 87739500 87739529 87739233

Central Asia (+86-516) 87739218 87739239 87739510

North America (+86-516) 87739285 87739551 87739713

South America (+86-516) 87739196 87739714 87739187

Africa (+86-516) 87739501 87739222 87739709

XUZHOU CONSTRUCTION MACHINERY GROUP IMP. & EXP. CO., LTD

Add: No.1, Tuolanshan Road, Xuzhou Economic Developing Zone, Jiangsu, China 221004

Fax: (+86-516) 87739230

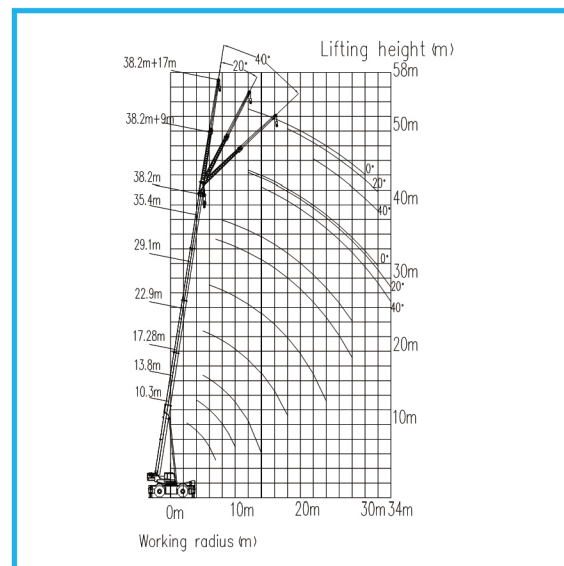
E-mail: export@xcmg.com



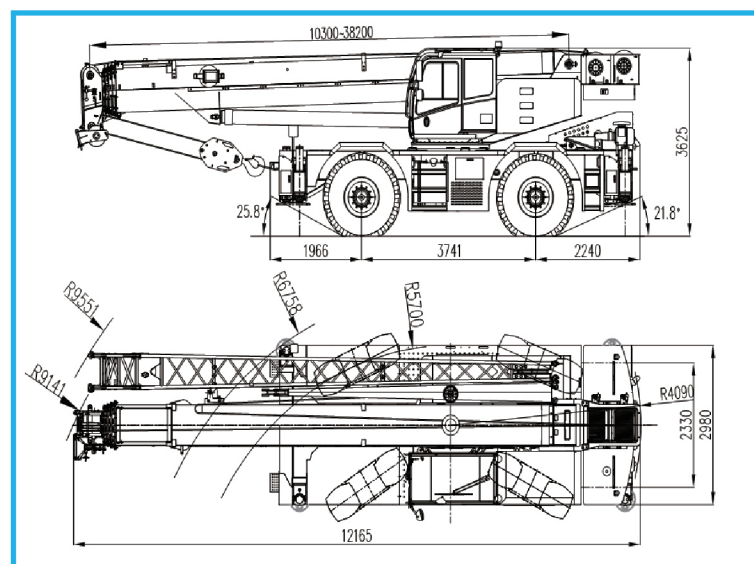
RT55E

Rough Terrain Wheeled Crane

Lifting operation range



Overall dimensions (driving)



RT55E Rough Terrain Crane Load Charts

Unit: t

With 6t of counterweight, on fully-extended outriggers, 360° operation of the boom

R/L (m)	10.3	10.3	17.28	22.9	29.1	35.4	38.2
2.5	55	55					
3	50	50					
4	42	42					
5	34.5	34.5	25.0	22			
6	28	28	24.0	21.3	16		
7	22	22	21.0	20.9	15.5	12	
8			18.5	19.9	14.6	11.8	8.5
9			15	16.2	14.3	11.5	8.5
10			12	13.2	13.2	10.4	8.1
12			8.2	9.2	9.9	7.8	7.8
14			5.7	6.8	7.4	6.1	7.5
16				5.1	5.7	4.9	6.2
18				3.9	4.5	3.9	5
20					3.5	3.1	4
22					2.8	2.5	3.3
24					2.2	2	2.7
26						1.6	2.2
28						1.3	1.7

Parameter configurations

Max. rated lifting capacity	55t
Min. rated working radius	2.5m
Total mass (including optional parts)	38565kg
Front axle load	18703kg
Rear axle load	19862kg
Min. turning radius	5.7(4 wheels),9.2 (2 wheels)
Main Boom	five-section,double-cylinder plus rope principle
Base boom length	10.3m
Fully-extended boom length	38.2m
Time for boom extending fully	140s
Elevating angle	-1.5°~80°
Time for boom raising	70s
Jib	2-section side-mounted jib
Jib offset angle	0°、20°、40°
Jib length	9m、17m
Main winch	Driven by a hydraulic motor, with build-in planetary gear reducer, normally closed brake and anti-winding wire rope equipped.
Single line pull	44kN
Hoisting speed	130m/min
Auxiliary winch	Hydraulic motor drive, built-in planetary gear reducer and normally-closed brake, as well as torsion-proof wire ropes
Single line pull	44kN
Hoisting speed(at 4th layer, no load)	130m/min(Layer 4)
Hydraulic system	Hydraulic system for lifting operation: in the electro-proportional control system, the pilot valve is an imported electro-proportional control valve. The moving angle of the pilot valve handle is directly proportional to the input current, and the valve spindle displacement of main control valve is directly proportional to the input current of the pilot valve, as well as the moving speed of actuator such as motor and oil cylinder. Thus fine inching control is available in the whole machine.Oil tank capacity: about: 720L. Hydraulic oil tank capacity: 720 liters
Load Moment Limiter	Hirschman Load moment limiter system with advanced micro-processing technology employed, has features of less power consumption, powerful function and high sensitivity, and is easy to operate. LCD with large screen will show the lifting operation data, such as moment percentage, actual lifting capacity, rated lifting capacity, working radius, boom length, boom angle, max. lifting height, working condition code, parts of line, limited angle, information code, etc. by means of Chinese、English and graphical symbol. It has complete forewarning and overloading cutout function, as well as overloading memory (black box) and fault self-diagnosis function
Outrigger System	Four independent horizontal beams and vertical jacks with integral holding valves, each independently controlled from cab.
Outrigger span	Longitudinal: 7m Lateral(fully/half extended): 7m/5.6m
Driving type	4 x 2 (FWD), 4 x 4
Engine	Ammerica Cummins six-cylinder, in line, water-cooled, supercharging intercooler, compression ignition diesel engine
Rated power/speed	149kW/2100r/min
Maximum torque/speed	740Nm/1500r/min
Engine emission standard	off-road, EU Stage IIIA.
Transmission	German ZF 6WG160 gearbox 6-Speeds forward and 3- Speeds reverse
Drive axle	Two operation modes :automatic, manual Developed by German Kessler for RT Crane.
Tires	Both front axle and rear axle are driven, they have heavy load-bearing capacity and high reliability, and are easy to maintain.
Fuel tank capacity	4×23.5R25 radial tires 300L