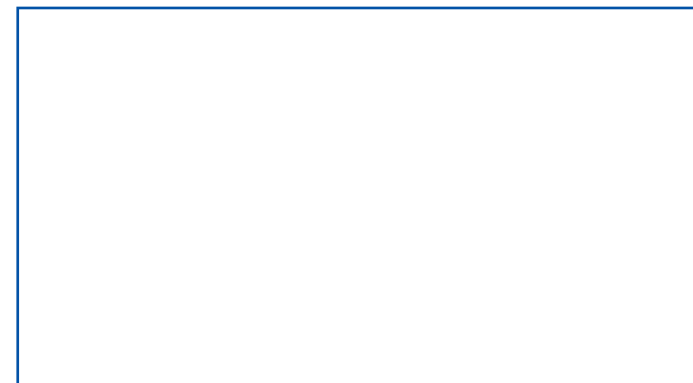




XCMG FOR YOUR SUCCESS



ARTICULATING BOOM LIFTS



WWW.XCMG.COM



XCMG Fire-fighting Safety Equipment Co., LTD, located in Xuzhou, Jiangsu Province, is a wholly-owned subsidiary of XCMG. Engaged in R&D, manufacturing and sales of mobile elevating work platform, XCMG provides customers with complete solutions to safe aerial operation. Since 2008, the company has actively worked hard on optimization of unified models and upgrading of scissor lifts series, articulating and telescopic boom lifts. The company's six technologies including multilevel integrated protection of aerial manned operation, three-dimensional space tracking and intelligent control are advanced in the industry. So far, the company has completed R&D of almost 30 products, including 6-14m scissor lifts, 14-24m articulating boom lifts and 22-58m telescopic boom lifts. All the new products have been certified by CE and KC. Having operated for several years, the industry has ascended to one of the top 2 industries in China and the company has become an industry giant in China.

The R & D expenditure of XCMG accounted for more than 10% of the total sales revenue every year, we have obtained more than 120 patents, including 22 invention patents. R & D of our products are strictly in accordance with Europe CE, North American ANSI standard, and all products have obtained CE certification. With many years of technical heritage, XCMG has fully launched the new series of mobile elevating work platform with the most valuable customer. New generation mobile elevating work platform, based on the advanced developed technology, systematic, modular, standardized design ideas, safe and reliable product experience, the four science and technology platform, nine advantages of technology for the rapid growth of aerial working platform market to provide complete Engineering Solutions! XCMG MEWP products have been exported to more than 30 countries, including USA, Mexico, Germany, Netherlands, Turkey, UAE, Kuwait, India, Indonesia, Malaysia, Vietnam, Philippines, Venezuela, Morocco, etc.

GTBZ14J

FEATURES

MEASUREMENTS

- GTBZ14J
- 16(16.2) m working height
 - 8.09(8.22) m horizontal reach
 - 230 kg lift capacity

PRODUCTIVITY

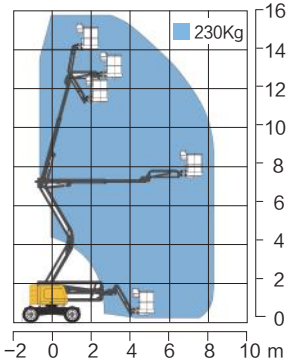
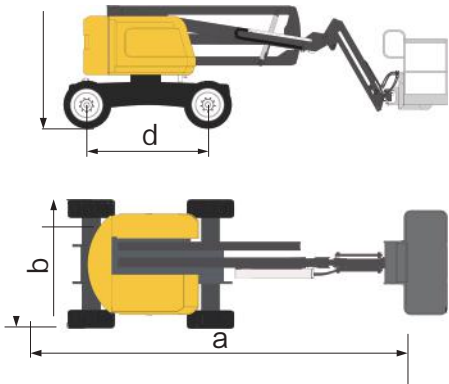
- 1.83 x 0.76 m steel platform
- 4WD
- Rough terrain foam-filled tyres
- Self-leveling platform
- Hydraulic platform rotation
- Fully proportional controls
- Drive enable
- Horn
- Hour meter
- Tilt alarm
- Descent alarm
- 355° non-continuous turntable rotation
- Locking turntable covers
- Zero tailswing and front arm swing
- Two speed wheel motors
- Engine gauge package
- Alarm package
- Dual flashing beacons

POWER

- 12 V DC auxiliary power
- Perkins 404D-22 diesel 38 kW

OPTIONS

- 2WD
- Off-road solid tires
- Tool tray
- Platform work lights
- Lockable platform control box cover
- Front driving lights



Item	Unit	GTBZ14J
a Overall Length	mm	6690
b Overall Width	mm	2260
c Overall Height	mm	2130
d Wheel Base	mm	2100
Maximum Working Height	m	16.05
Maximum Platform Height	m	14.05
Maximum Working Range	m	8.22
Maximum Load Weight	kg	230
1st Boom Luffing Range	°	0~+60
2nd Boom Luffing Range	°	-8~+75
Fly Jib Luffing Range	°	-60~+80
Rotation Angle of Rotary Table	°	355
Maximum Tailswing	mm	0
Platform Size	mm	1830×760×1150
Rotation Angle of Platform	°	160
Total Weight	kg	6900
Maximum Travel Speed	km/h	6.1
Minimum Turning Radius	m	4.5
Minimum Ground Clearance	mm	250
Maximum Grade Ability	%	45
Tire Specification	-	315/55D20
Engine Model	-	Perkins 404D-22
Rated Power of Engine	kW/(r/min)	38/(3000)

HIGHLIGHT

Flexibility And Efficiency

“Σ-type” double link jib has characteristics of compact structure and flexible extension, which can achieve vertical lifting and horizontal extension and has very strong obstacle climbing ability;180°rotatable platform provides bigger operation range; Narrow-type rotary table with compact structure can achieve “zero tail wagging” and improve operation efficiency.

Super Strong Site Adaptability

Cross-country type chassis, four-wheel drive system, pouring-type cross-country wide tyre, full-time a xle balanced system and 38kw strong power are configured so that the equipment has excellent terrain adaptability.

Advanced Performance, Safety And Reliability

Full-range operation, visual and friendly control panel and easy operation; Electro-hydraulic proportional system control is accurate and efficient. Protective measures such as chassis incline protection, platform overload alarming, emergency landing, safety speed limit, flexibility start-stop technology, etc. are provided.

This print does not belong to the contract, and is not a part of the vehicle purchase contract. We reserve the right to revise the product model, parameters, configuration based on the continuous improvement requirements of the product, without prior notice. Pictures are for reference only, and the specific product shall depend on the real product. Product in the picture may not be the standard configuration, so some parts may be purchased separately.

GTBZ14JD

FEATURES

MEASUREMENTS

- GTBZ14JD
- 15.8 m working height
 - 8 m horizontal reach
 - 230 kg lift capacity

PRODUCTIVITY

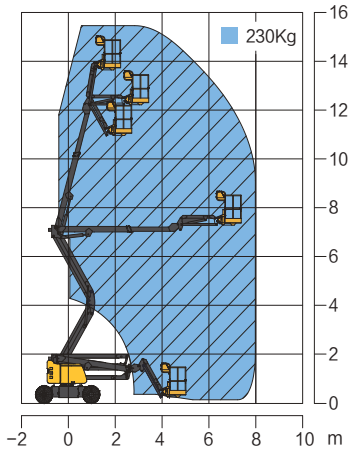
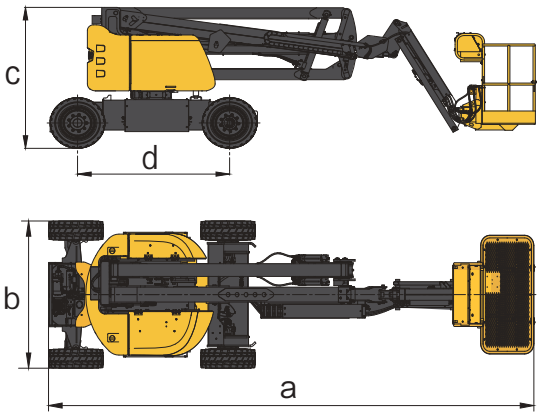
- 1.4 x 0.7 m steel platform
- 2WD
- Off-road solid tires
- Self-leveling platform
- Hydraulic platform rotation
- Fully proportional controls
- Drive enable
- Horn
- Hour meter
- Tilt alarm
- Descent alarm
- 355° non-continuous turntable rotation
- Locking turntable covers
- Zero tailswing and front arm swing
- Two speed wheel motors
- Engine gauge package
- Alarm package
- Dual flashing beacons

POWER

- 24 V DC auxiliary power
- 48 V DC (eight 6 V 420 Ah batteries)

OPTIONS

- Perfusion types
- Environmentally friendly traceless tires
- Tool tray
- Platform work lights
- Lockable platform control box cover
- Front driving lights



Item	Unit	GTBZ14JD
a Overall Length	mm	6420
b Overall Width	mm	1750
c Overall Height	mm	2000
d Wheel Base	mm	2010
Maximum Working Height	m	15.8
Maximum Platform Height	m	13.8
Maximum Working Range	m	8
Maximum Load Weight	kg	230
1st Boom Luffing Range	°	0~+60
2nd Boom Luffing Range	°	-8~+75
Fly Jib Luffing Range	°	-60~+80
Rotation Angle of Rotary Table	°	355
Maximum Tailswing	mm	0
Platform Size	mm	700×1400×1150
Rotation Angle of Platform	°	160
Total Weight	kg	6500
Maximum Travel Speed	km/h	5.2
Minimum Turning Radius	m	3.15
Minimum Ground Clearance	mm	200
Maximum Grade Ability	%	30
Tire Specification	-	250-15
Engine Model	-	-
Rated Power of Engine	kW/(r/min)	-

HIGHLIGHT

• Leading Technologies

The first electric-driven articulated boom product is leading the domestic industry in terms of main working parameters. In addition, the AC electric-driven traveling technology and the differential traveling control technology are applied to realize more accurate power matching and more flexible steering control.

• Higher Safety And Stability

The complete safety protection, the independently designed control system, and high-efficiency worm and gear mechanism provide an all-new operation experience.

• Flexible Operations

The“Crank-slider” mechanism is applied to realize small turning radius and flexible steering. In addition, the 30% grade ability makes the driving operations easier.

This print does not belong to the contract, and is not a part of the vehicle purchase contract. We reserve the right to revise the product model, parameters, configuration based on the continuous improvement requirements of the product, without prior notice. Pictures are for reference only, and the specific product shall depend on the real product. Product in the picture may not be the standard configuration, so some parts may be purchased separately.

GTBZ18A1

FEATURES

MEASUREMENTS

- GTBZ18A1
- 20.4 m working height
 - 11.9 m horizontal reach
 - 230 kg lift capacity

PRODUCTIVITY

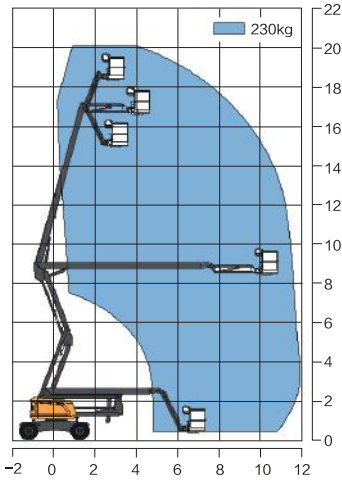
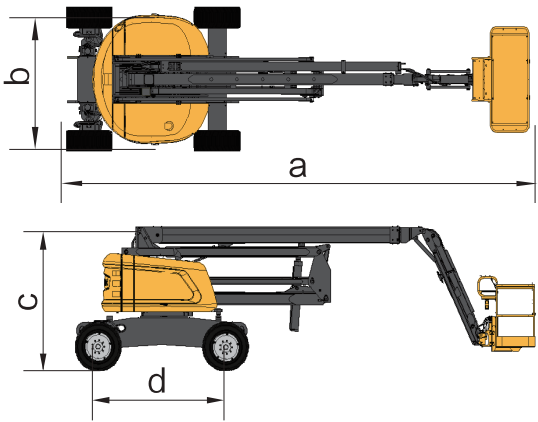
- 1.83 x 0.76 m steel platform
- 4WD
- foam-filled tyres
- Self-leveling platform
- Hydraulic platform rotation
- Fully proportional controls
- Drive enable
- Horn
- Hour meter
- Tilt alarm
- Descent alarm
- 360° turntable rotation
- Locking turntable covers
- Zero tailswing and front arm swing
- Two speed wheel motors
- Engine gauge package
- Alarm package
- Dual flashing beacons

POWER

- 12 V DC auxiliary power
- Perkins 404D-22 38W

OPTIONS

- Off-road solid tires
- Tool tray
- Deutz D2011L03i 36.3 kW
- Platform work lights
- Lockable platform control box cover
- Front driving lights



Item	Unit	GTBZ18A1
a Overall Length	mm	9080
b Overall Width	mm	2490
c Overall Height	mm	2680
d Wheel Base	mm	2500
Maximum Working Height	m	20.1
Maximum Platform Height	m	18.4
Maximum Working Range	m	11.9
Maximum Load Weight	kg	230
1st Boom Luffing Range	°	0 ~ +70
2nd Boom Luffing Range	°	0 ~ +75
Fly Jib Luffing Range	°	-65 ~ +70
Rotation Angle of Rotary Table	°	360
Maximum Tailswing	mm	0
Platform Size	mm	1830×760
Ratation Angle of Rotating Platform	°	160
Total Weight	kg	10600
Maximum Travel Speed	km/h	6.0
Minimum Turning Radius	m	6.0
Minimum Ground Clearance	mm	230
Maximum Grade Ability	%	45
Tire Specification	-	355/55D625
Engine Model	-	Perkins 404D-22
Rated Power of Engine	kW/(r/min)	38/(3000)

HIGHLIGHT

• Strong Road Adaptability

With four-wheel drive, off-road wide tires and new axle floating technology,the drive is superior, and the road adaptability is strong, with the maximum grade ability of 45%, reaching to the highest level in the industry.

• Accurate And Efficient Operation

“Σ” type linkage folded hybrid boom design; the overall layout is compact and tail swing is small,which is easy to store and access to the narrow space to work; the extending of the body is flexible,without regional restrictions and with a wide operating range. It has upward,downward and crossed precise multidirectional positioning functions and excelent extending features.

• Compactness And Flexibility

The complete machine is arranged compactly and crank boom recovery gesture is adopted during transportation with transportation length of only 7m; meanwhile, it adopts tailless wagging design, which is convenient for storage and entering into narrow space for operation.

This print does not belong to the contract,and is not a part of the vehicle purchase contract.We reserve the right to revise the product model,parameters,configuration baesd on the continuous improvement requirements of the product ,without priornotice.Pictures are forreference only ,and the specific product shall depend on the real product.Product in the picture may not be the standard configuration ,so some parts may be purchased separately.

GTBZ24A

FEATURES

MEASUREMENTS

- GTBZ24A
- 26.38 m working height
 - 18.9 m horizontal reach
 - 230 kg lift capacity

PRODUCTIVITY

- 2.4 x 0.9 m steel platform
- 4WD
- 4WS
- Rough terrain foam-filled tyres
- Self-leveling platform
- Hydraulic platform rotation
- Fully proportional controls
- Drive enable
- Horn
- Hour meter
- Tilt alarm
- Descent alarm
- 360° turntable rotation
- Locking turntable covers
- Zero tailswing and front arm swing
- Two speed wheel motors
- Engine gauge package
- Alarm package
- Dual flashing beacons

POWER

- 12 V DC auxiliary power
- QSF2.8 71BHP diesel 53 kW

OPTIONS

- KDI2504 TCR diesel 55.4kW
- Tool tray
- Platform work lights
- Lockable platform control box cover
- Front driving lights



HIGHLIGHT

Outstanding Extending Capacity and Working Range

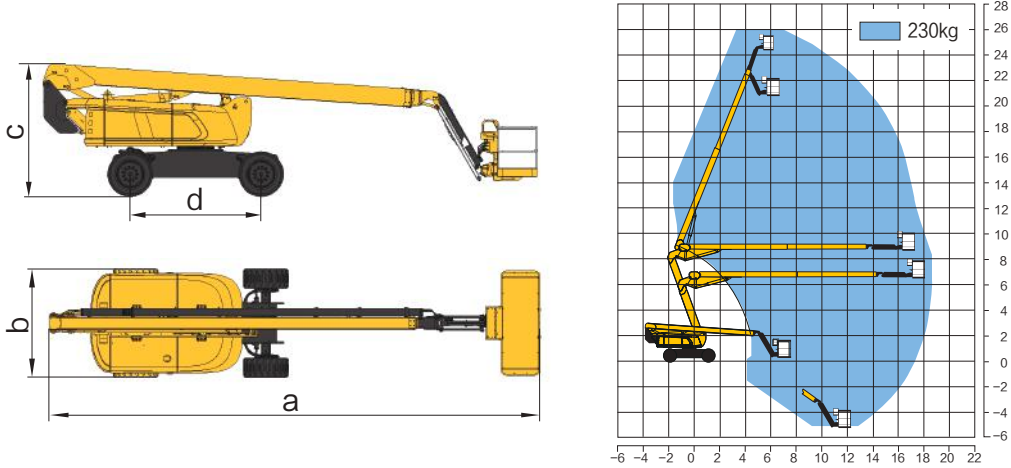
The upward, downward, and spanning capacities are promoted to the maximum degree to realize multi-directional positioning function and efficiently reach the working space, with the maximum horizontal extending reach hitting 18.9m.

Superexcellent Maneuverability

The customized valve control system and all accurately controlled motions remarkably improve the motion smoothness and the flow anti-saturation design is applied to provide efficient and stable composite motion experiences.

Industry's Highest Fuel Economy

Compared with traditional hydraulic system, the pioneering adaptive power energy-conservation system reduces by >30% the comprehensive fuel consumption under diversified working conditions.



Item	Unit	GTBZ24A
a Overall Length	mm	11280
b Overall Width	mm	2490
c Overall Height	mm	3000
d Wheel Base	mm	3000
Maximum Working Height	m	26.38
Maximum Platform Height	m	24.38
Maximum Working Range	m	18.9
Maximum Load Weight	kg	230
1st Boom Luffing Range	°	-1 ~ +70
2nd Boom Luffing Range	°	-35 ~ +68
Fly Jib Luffing Range	°	-60 ~ +70
Rotation Angle of Rotary Table	°	360
Maximum Tailswing	mm	1330
Platform Size	mm	2400×900
Platform Turning Angle	°	160
Total Weight	kg	17800
Maximum Travel Speed	km/h	5
Minimum Turning Radius	m	4.2m(Four-turn)/6.7m(Tow-turn)
Minimum Ground Clearance	mm	260
Maximum Grade Ability	%	45
Tire Specification	-	18/625
Engine Model	-	QSF2.8 71BHP
Rated Power of Engine	kW/(r/min)	53(2200)

This print does not belong to the contract, and is not a part of the vehicle purchase contract. We reserve the right to revise the product model, parameters, configuration based on the continuous improvement requirements of the product, without prior notice. Pictures are for reference only, and the specific product shall depend on the real product. Product in the picture may not be the standard configuration, so some parts may be purchased separately.