

Официальный дилер
спецтехники XCMG в России
+7 (495) 641-80-47
info@techno-xcmg.ru

ТЕХНО

Официальный дилер
спецтехники XCMG в России
+7 (495) 641-80-47
info@techno-xcmg.ru

ТЕХНО

徐工徐工 助您成功

XCMG FOR YOUR SUCCESS

Официальный дилер
спецтехники XCMG в России
+7 (495) 641-80-47
info@techno-xcmg.ru

地址/Address: 中国江苏徐州市铜山路165号
电话/Tel: 0516-8788825
网站/Web: <http://www.xcmg.com/xgjl>
质量监督电话/Quality Inquiry Tel: 0516-87888674
备件电话/Spare Parts Tel: 0516-8788846
邮编/Post Code: 221004

服务热线 Service Tel:
400-110-9999 / 0516-87888846

本印刷品不属于合同。由于产品不断改进的需要，我们保留对产品型号、参数、配置进行变更的权利，恕不另行告知。图片仅供参考，具体产品以实物为准。图片中的产品可能并非标准配置，部分部件可能需要另行购置。
This print shall not be taken as a contract. Due to continuous product improvement, we reserve the right to make modification on the product model, parameters and configuration without further notice. The pictures presented here are only for reference; take the real product as standard. The product shown in the picture may not be of standard configuration, and some parts may need further purchase.



Официальный дилер
спецтехники XCMG в России
+7 (495) 641-80-47
info@techno-xcmg.ru

ТЕХНО



Официальный дилер
спецтехники XCMG в России
+7 (495) 641-80-47
info@techno-xcmg.ru



系列 Series

Официальный дилер
спецтехники XCMG в России
+7 (495) 641-80-47
info@techno-xcmg.ru

集装箱正面吊运起重机

Container Reach Stacker

- 智能高效 Intelligent And Efficient
- 安全可靠 Safe And Reliable
- 操作舒适 Comfortable To Manipulate
- 节能环保 Energy Saving

Официальный дилер
спецтехники XCMG в России
+7 (495) 641-80-47
info@techno-xcmg.ru

ТЕХНО

01 ABOUT US

关于我们

徐州徐工港口机械有限公司是徐工集团的全资子公司，公司主营正面吊、堆高机、叉车、抓料(钢)机、集装箱门式起重机(RMG、RTG)、门座起重机、跨运车、高架吊(MHC)等产品，为港口(码头)、堆场、铁路货运站、货物集散中心、钢厂等场所提供定制化、成套化的集装箱吊运及散料装卸系列设备，可满足客户各种工况作业需求。

Xuzhou XCMG Port Machinery Co., Ltd is a wholly-owned subsidiary of XCMG Group. The company's main products are Container Reach Stacker, Empty Container Handler, Counterbalanced Fork Lifts Truck, Grip material (steel) machine, Gantry Crane (RMG, RTG), Portal Crane, Straddle Carrier, harbor Crane (MHC), etc. Based on advanced research and development system, first-class production technology of XCMG Group. It provides complete and customized supporting products for ports (wharfs), yards, railway freight stations, terminals, steel mills and other places to meet the needs in various working conditions.

十年磨一剑K系列研发成功
Ten years to sharpen a sword, K series has been developed successfully

全球首台纯电动正面吊XCS-EV45
参加上海宝马展
The world's first fully electric Container Reach Stacker XCS-EV45 was exhibited in the Shanghai BAUMA show

2017
XCS45推向市场取得突破性进展
XCS45 hit the market and made a breakthrough

2016
XCS45参加上海宝马展
XCS45 was exhibited in the Shanghai BAUMA show

2013
XCS45U参加美国拉展
XCS45U was exhibited in the American LA show

2012
正面吊产品开始研发
Began to develop Container Reach Stacker

02 ABOUT K

SERIES PRODUCTS

关于K系列产品

K系列正面吊产品是徐工港机联合欧洲研发中心，结合全球先进的设计理念、成熟可靠的技术、顶级的配套体系，历经十年的技术沉淀、三年的测试验证，打造的全新一代正面吊拳头产品。

Container Reach Stacker of K series is developed by XCMG European R & D center. Combining worldwide advanced design concepts, mature and reliable technology, Top-level component supporting system, Ten-year experience technology development, Three-year test verification, created a new generation of Container Reach Stacker star product.

Общественный дилер
спецтехники XCMG в России
+7 (495) 641-80-47
info@techno-xcmg.ru

Общественный дилер
спецтехники XCMG в России
+7 (495) 641-80-47
info@techno-xcmg.ru

Общественный дилер
спецтехники XCMG в России
+7 (495) 641-80-47
info@techno-xcmg.ru

Общественный дилер
спецтехники XCMG в России
+7 (495) 641-80-47
info@techno-xcmg.ru

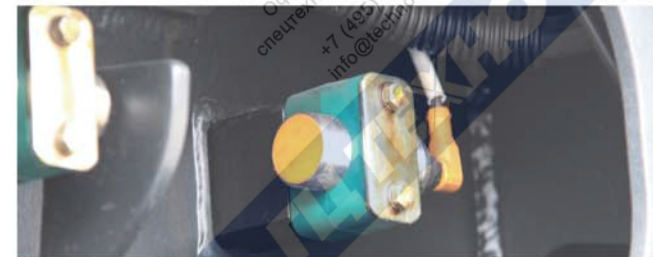
Общественный дилер
спецтехники XCMG в России
+7 (495) 641-80-47
info@techno-xcmg.ru



▶ 动态功率匹配技术 Dynamic Power Matching Technology

控制器、手柄、泵、阀，结合动态功率匹配系统，系统响应时间由0.7s缩短为0.3s，响应灵敏、作业高效。

Controller + joystick + pump, valve, combined with dynamic power matching technology reduce the system response time from 0.7s to 0.3s, leading to sensitive reaction and efficient operation.



▶ 自适应电控阻尼技术 Self-adaptive Electronically Controlled Damping

系统根据正面吊实际工况自动调节阻尼油缸特性，解决空箱调平慢、重箱急刹摆动幅度大的问题。

The system automatically adjusts the characteristics of spreader damping oil cylinder according to the actual working condition, so as to solve the problems of slow balancing speed of empty container and large swing of heavy container during sudden braking.



▶ 垂直起升技术 Vertical Lifting Technology

通过实时监测臂架数据，智能调整臂架运行状态，提升跨箱作业和火车装卸作业效率。

Intelligently adjust the boom's working status through real-time monitoring of boom data improve the efficiency of cross-container operations and train loading and unloading operations.

▶ 变幅智能调速技术 Intelligent Derricking Speed-regulating

系统根据吊重情况智能调节起升速度，轻载高速、重载低速，无需人工切换。

The system automatically adjusts the derricking speed according to the lifting weight, high speed when light loaded, low speed when heavy loaded, no manual switching.

▶ 精确称重、偏载检测技术 Accurate Weighing And Unbalance Loading Detection

通过装在吊具锁头处的压力传感器精确检测集装箱重量和偏载情况，超差自动报警，避免反复调整。

Detecting container weight and unbalance loading by pressure sensor installed in the spreader lock. Automatic alarm for out of tolerance to avoid repeated adjustment.



Официальный дилер спецтехники XCMG в России
+7 (495) 641-80-47
info@techno-xcmg.ru

Официальный дилер спецтехники XCMG в России
+7 (495) 641-80-47
info@techno-xcmg.ru

智能刹车技术 Intelligent Brake Technology

通过雷达探测正后方吊后状况,当有人或障碍物接近时,实时报警并智能刹车。
The system detects obstacles behind the machine by radar and infrared probes. While people or obstacles are approaching, it will alarm in real time and brake intelligently.



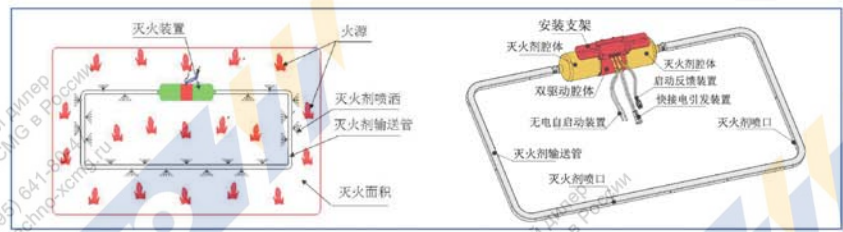
动态防倾翻保护技术 Dynamic Anti-tipping Protection Technology

系统实时监控车辆运行状态,接近极限工况时,主动限制运行速度,防止车辆倾翻。
The system monitors the working state of the machine in real time. When approaching the extreme working condition, it proactively limits speed to prevent the machine from tipping over.

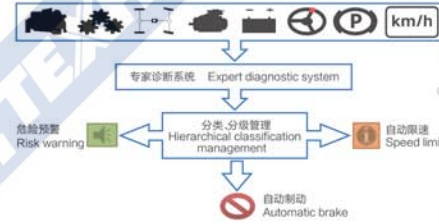


自动灭火技术 Automatic Fire Extinguishing System

通过布置在发动机机舱一周的环形自动灭火系统,实时监测发动机机舱高温区域的温度、烟雾信息,及时自动灭火,避免事故。
With automatic fire extinguishing system arranged around the engine compartment, the temperature and smoke information in the high-temperature area of it can be monitored in real time, so as to automatically extinguish the fire in time and avoid accidents.



行车动态监控系统 Vehicle dynamic monitoring system



成熟可靠的配套件 Mature And Reliable Supporting Parts

成熟可靠的配套件、专业的匹配优化、全寿命周期的仿真分析、多维度的失效模式分析、系统性的测试评估以及高于行业标准的强化试验,有效保证产品的可靠性。
Mature and reliable supporting parts, professional matching optimization, full-life cycle simulation analysis, multi-dimensional failure mode analysis, systematic testing and evaluation, as well as higher than the industry standard, effectively ensure the reliability of the product.

05

COMFORTABLE TO MANIPULATE 操作舒适



▶ 极佳视野 Excellent View

全景视野司机室、驼峰式平衡重，辅以动力移动司机室，视野极佳。
Full view driver's cab, hump counterweight and power movable cab offer outstanding visibility.



▶ 人机友好 User-Friendly

高清显示器，信息丰富、界面友好、显示清晰、车况一目了然，轻松掌控车辆各种信息。
HD monitor with user-friendly interface and clear machine status makes it easy to control all kinds of machine information.



▶ 舒适操作 Comfortable To Manipulate

航空手柄，人体工程学座椅，六向可调方向机，以及人性化的操纵件布置，操纵轻便、驾驶舒适，避免作业疲劳。
Due to aviation joystick, ergonomic seat, six-way adjustable steering gear and humanized control part layout, it is easy to operate, comfortable to drive, and avoid working fatigue.

▶ 全方位灯光 Omni-directional Lighting

整机前、后、吊臂和吊具上均设置工作灯，照明设置完善，满足各种作业场所使用需求。
Perfect lighting, such as working lamps set on the front and rear of the machine, as well as on the boom and spreader, meet the requirements in various job sites.



Official XCMG dealer
+7 (495) 641-80-47
info@techno-xcmg.ru

Official XCMG dealer
+7 (495) 641-80-47
info@techno-xcmg.ru

Official XCMG dealer
+7 (495) 641-80-47
info@techno-xcmg.ru

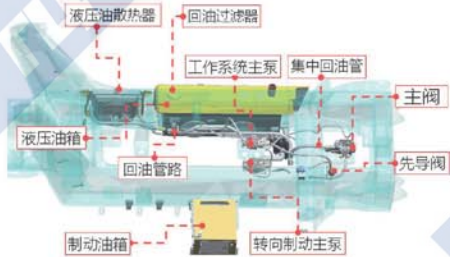
Official XCMG dealer
+7 (495) 641-80-47
info@techno-xcmg.ru

06 ENERGY SAVING 节能环保

▶ 智能液压系统 Intelligent Hydraulic System

流量自适应的负载敏感液压系统, 根据负载实时、精准调节油泵排量、压力, 避免溢流损失, 有效降低作业能耗。

Flow self-adaptive load sensitive hydraulic system enables the displacement and pressure of pump to be accurately adjusted according to the load in real time, avoiding overflow loss and effectively reducing energy consumption.



▶ 成熟、高效的节能设计 Mature And Efficient Energy-saving Design

Dana TE30全自动变速箱, 低速大扭矩、高速高效率, 有ECO节能模式, 动力性与经济性最佳匹配, 节省行驶油耗10%以上。

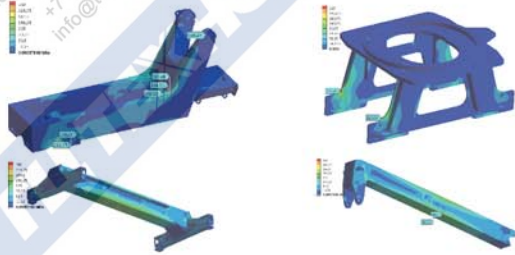
Dana TE30 automatic transmission with ECO mode has feature of high torque at low speed and high efficiency at high speed, the best matched dynamic performance and economy, leading to save more than 10% fuel consumption.



▶ 整机轻量化技术 Lightweight Technology

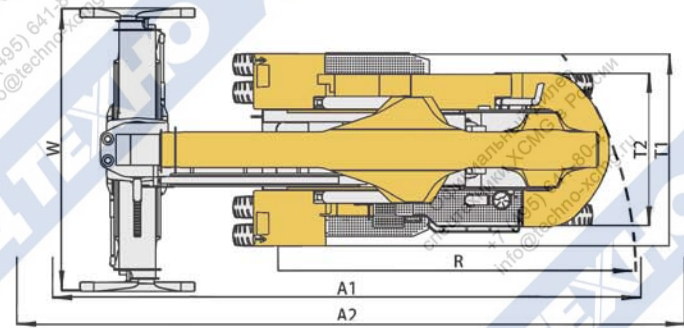
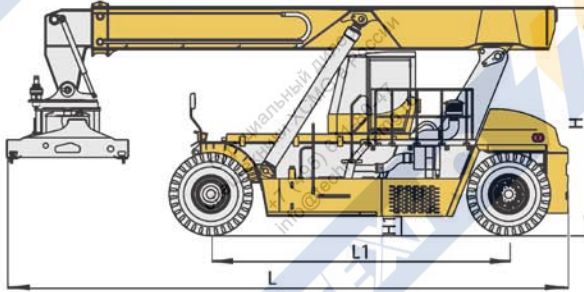
基于受力最小的多体动力学优化匹配技术, 部件受力降低8%, 整机重量轻, 使用油耗低。

The multi-body dynamic optimization matching technology with the minimum force makes 8% reduction in component stress which contributes to lighter machine and lower fuel consumption.



K系列
集装箱正面吊运起重机

07 PRODUCT OVERVIEW 技术规格



技术指标 parameters		单位unit	产品型号Product model						
			XCS4531K	XCS4535K	XCS4541K	XCS4531T	XCS50S	XCS31W	XCS1009K
臂架boom	最大起升高度max lifting height	mm	15100	15100	15100	9188	15100	9500	16200
	倾角inclination angle	°	0~60	0~58	0~57	0~45	0~60	0~55	0~64.5
最大起升速度(空载/满载) Max Lifting Speed(Unloaded/loaded)		mm/s	420/250	420/250	420/220	170/150	420/250	420/250	450/400
最大下降速度(空载/满载) Max Lowering Speed(Unloaded/loaded)		mm/s	360/360	360/360	360/360	350/300	360/360	360/300	400/400
最大行驶速度(空载/满载) Max Travelling Speed(Unloaded/loaded)		km/h	25/21	25/18	22/16	16/14	25/21	25/21	28/25
爬坡能力(空载/满载) Gradeability(Unloaded/loaded)		%	39/32	38/24	27/18	30/18	39/32	39/32	33/27
整车质量Overall Weight		t	71.2	76.5	90	62	65	74.5	39
额定承载Rated Capacity		t	45	45	45	45	50	31	10
堆码层数No. Of Stack		-	5 (9'6"/8'6")	5 (9'6"/8'6")	5 (9'6"/8'6")	3 (9'6"/8'6")	—	—	"6(8'6"), 5(9'6")"
L 总长 Overall Length		mm	11340	11750	12300	10750	10600	12600	11000
L1轴距 Wheel Base		mm	6000	6500	7000	6000	6000	6000	5100
H总高 Overall Height		mm	4670	4770	5000	4670	4670	6600	4000
H1"最小离地间隙 Min Ground Clearance"		mm	350	350	400	350	350	350	250
W总宽 Overall Width		mm	6052-12185	6052-12185	6052-12185	6052	4120	4120	6052-12185
T1"前轮距 Front Track		mm	3033	3033	3060	3033	3033	3033	3033
T2"后轮距 Rear Track		mm	2790	2790	3120	2790	2790	2790	2450
R "最小转弯半径 Min Turing Radius"		mm	8000	8800	9500	8000	8000	8000	6800
A1"20'集装箱通道宽度 20' Container Aile Width"		mm	11300	11600	12500	11300			10000
A2"40'集装箱通道宽度 40' Container Aile Width"		mm	13600	13600	13600	/			13600



EQUIPMENT SPECIFICATION

配置参数



技术指标 parameters		单位unit	产品型号Product model						
			XCS4531K	XCS4535K	XCS4541K	XCS4531T	XCS50S	XCS31W	XCS1009K
发动机 Engine	型号Model	-	VOLVO TAD1151VE	Cummins QSM11	VOLVO TAD1151VE	潍柴 WP7G240E301	VOLVO TAD1151VE	VOLVO TAD1151VE	Cummins QSB6.7
	额定功率/转速Rated Capacity	kW/rpm	265/2100	250/2100	265/2100	178/2200	265/2100	265/2100	164/2300
	最大扭矩/转速Max Torque	Nm/rpm	1785/1260	1785/1260	1785/1260	1100/(1100~1500)	1785/1260	1785/1260	952/1400
	尾气排放标准Emission Standard	-	III阶段	III阶段	III阶段	III阶段	III阶段	III阶段	III阶段
变速箱型号 Transmission Model	-	DANA TE30	DANA TE30	DANA TE30	ZF 3WG211	DANA TE30	DANA TE30	DANA TE30	DANA TE14
驱动桥型号 Axle Model	-	Kessler D102 PL341	Kessler D102 PL341	Kessler D102 PL341	Kessler D102 PL341	Kessler D102 PL341	Kessler D102 PL341	Kessler D102 PL341	Kessler D81PL488
吊具 spreader	型号Model	-	XDJ450	XDJ450	XDJ450	XDJ450			XDJ100
	侧移距离Shift Distance	mm	±800	±800	±800	±800			±800
	旋转角度Slewing Angle	°	+105/-195	+105/-195	+105/-195	+105/-195			+105/-195
	倾斜角度Inclination Angle	°	-	-	-	-			-
	自重Weight	t	8.0	8.0	8.0	8.0			5.0
适用对象Application	-	ISO20'/40'/45'集装箱	ISO20'/40'/45'集装箱	ISO20'/40'/45'集装箱	ISO20'/40'/45'集装箱				ISO20'/40'/45'集装箱
轮胎Tyre	-	18.00-25 40PR	18.00-33 36PR	18.00-33 36PR	18.00-25 40PR	18.00-25 40PR	18.00-25 40PR	18.00-25 40PR	14.00-24R24

以上各系列产品均配备Cummins QSM11发动机, 可根据实际需求选择 The above products are selected to be equipped with Cummins QSM11 engine.

FUNCTION

功能配置

功能配置Function	<input checked="" type="radio"/> 标配Standard	<input type="radio"/> 选配Additional
功能列表Item		功能列表Item
旋锁计数器Twist Lock Counter	<input checked="" type="radio"/>	12V电源12V Power
发动机小时计Engine Hour Meter	<input checked="" type="radio"/>	24V电源24V Power
扩音喊话系统Loudspeaker Amplifiers	<input checked="" type="radio"/>	收音机Radio
司机室内吊具三色灯Spreader Tri-color indication Light In Cab	<input checked="" type="radio"/>	胎压监测Tire pressure monitoring system
驾驶室阅读灯Cab Reading Lamp	<input checked="" type="radio"/>	360°全息影像Holographic imaging system
环形灭火系统Automatic Fire Detection	<input checked="" type="radio"/>	精确称重系统Accurate weighing System
偏载检测系统Unbalance Loading Detection System	<input type="radio"/>	Bromma吊具Bromma spreader
车载打印系统Container Reach Stacker Printing System	<input type="radio"/>	冷却液加热系统Coolant heating device

PARTIAL SPREADERS DISPLAY

部分吊具展示

通用吊具 Universal spreader



徐工XDJ450系列集装箱通用吊具有可伸缩、旋转及侧移的功能，适用于各类不同尺寸的集装箱装卸作业。在起吊后，通过吊具旋转，使整机更容易通过狭小的通道。同时，通过吊具左右侧移，在吊箱时精准对箱，以提高作业效率。可满足港口（码头）、堆场、铁路货运站、货物集散中心等各类集装箱搬运工况作业需求。

With the functions of expansion, rotation and side shift XCMG XDJ450 series container universal spreader which rotates to make the whole machine easier to pass through the narrow passage after lifting can be applied to various container loading and unloading operations. At the same time, by the spreader shifting from left to right, the container can be accurately caught to improve the working efficiency. The universal spreader enables to meet all kinds of container handling operation requirements such as port (wharf), yard, train station and terminals.

倾斜吊具 Tilting spreader



徐工XDJ350系列倾斜吊具打破传统的集装箱散货装卸模式，完美地解决了集装箱散货的转运、卸料作业效率低的问题。适用于粮食、煤炭等散货物料的装卸作业，提高了集装箱散货运输、装卸的效率。

XCMG XDJ350 series tilt spreaders break the traditional loading and unloading mode of bulk cargo, and perfectly solve the problem of low efficiency of transshipment and unloading. It is suitable for the loading and unloading of bulk materials such as grain and coal, which improves the efficiency of transportation, loading and unloading.

塔筒、散货吊具 Tower、drum bulk cargo spreader



徐工塔筒、散货吊具是专门针对塔筒、钢管、钢卷及特殊散货物料的搬运作业研发而成。具有智能高效、安全可靠的特性，更安全、更高效地服务于塔筒及散货的搬运、装卸作业。

XCMG tower and bulk spreaders are specially developed for the handling of tower, steel pipe, steel coil and special bulk materials. With intelligent, efficient, safe and reliable characteristics, more safe, more efficient service in the tower and bulk cargo handling, loading and unloading operations.

定制化吊具 Customized spreader

徐工港机拥有标准的吊具设计模块，可根据用户需求，为客户量身打造能够满足实际使用工况的空箱吊具、重型吊具、圆木吊具、电磁吊具等，满足各种工况、各种物料运输、装卸的需求。

XCMG has standard spreader design modules, which can be customized according to user needs to meet the actual operating conditions of empty container spreader, heavy spreader, log spreader, electromagnetic spreader, etc., to cater for various working conditions and all kinds of materials transportation, loading and unloading.

10 SPREADER SPECIFICATIONS

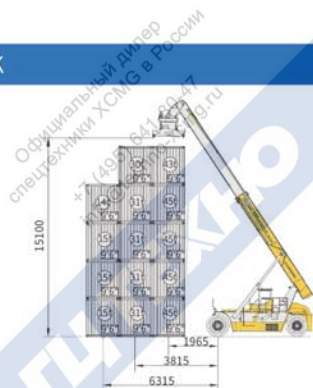
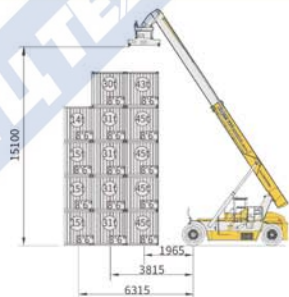
吊具参数

项目 Item	徐工吊具XDJ450	Bromma吊具 Bromma Spreader	徐工吊具XDJ350	允差范围 Tolerance
起重量 Lifting capacity	45000kg	45000kg	35000kg	≥
侧移距离 Side shift	±800mm	±800mm	±800mm	±1.5%
伸缩时间 Telescoping time	伸出 Extend:25s 缩回 Retract:11s	15s	-	±10%
旋转时间 Rotating time	50s	50s	50s	±10%
侧移时间 Shifting time	15s	15s	15s	±10%
开闭锁时间 Lock/unlock time	1s	1s	1s	±10%

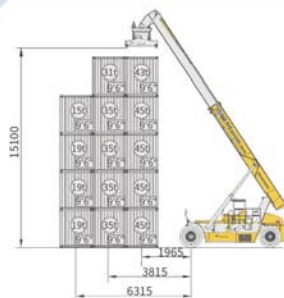
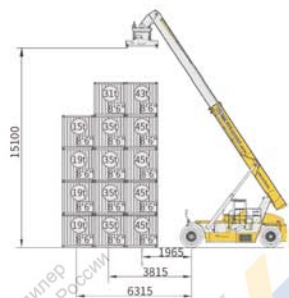
LIFTING CAPACITY 起重能力

Официальный дилер
спецтехники XCMG в России
+7 (495) 641-80-47
info@techno-xcmg.ru

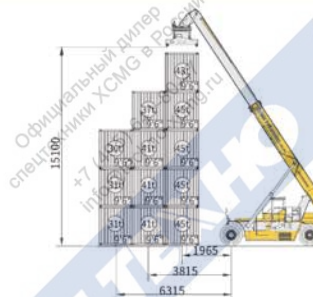
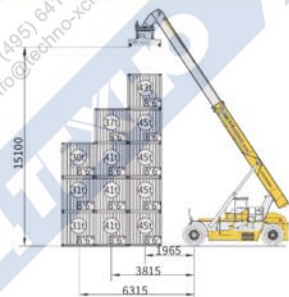
XCS4531K



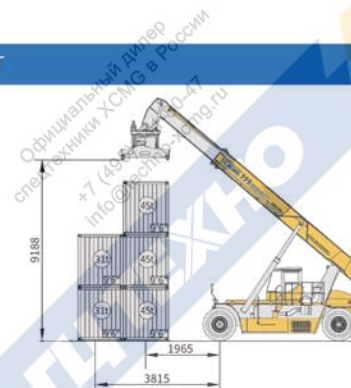
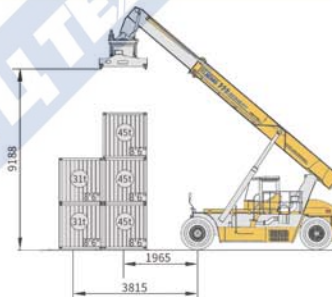
XCS4535K



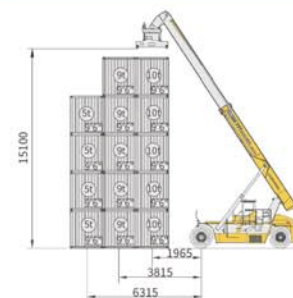
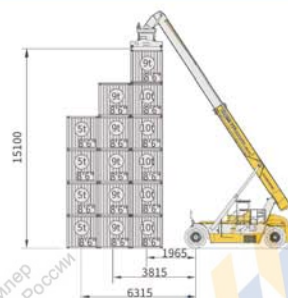
XCS4541K



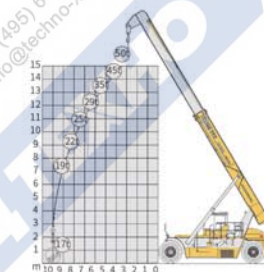
XCS4531T



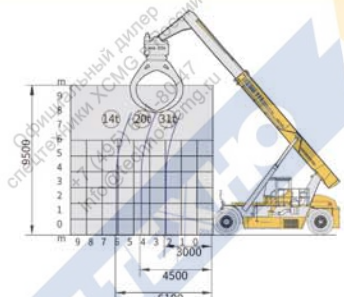
XCS1009K



XCS50S



XCS31W



Официальный дилер
спецтехники XCMG в России
+7 (495) 641-80-47
info@techno-xcmg.ru

Официальный дилер
спецтехники XCMG в России
+7 (495) 641-80-47
info@techno-xcmg.ru

Официальный дилер
спецтехники XCMG в России
+7 (495) 641-80-47
info@techno-xcmg.ru

Официальный дилер
спецтехники XCMG в России
+7 (495) 641-80-47
info@techno-xcmg.ru

Официальный дилер
спецтехники XCMG в России
+7 (495) 641-80-47
info@techno-xcmg.ru

Официальный дилер
спецтехники XCMG в России
+7 (495) 641-80-47
info@techno-xcmg.ru

12 SERVICE FOR YOU 服务为您

► **聚焦市场、聚力服务** Focus on the market & service
徐工港机始终秉承“无忧服务”的超值服务理念，坚持“以客户为中心，让客户满意”的服务宗旨，为您提供“贴身、贴心”的全生命周期超值服务，让用户真正感受到更及时、更有效的服务承诺。

XCMG port machinery adheres to the concept of "no worry service" and "customer-centered, customer-satisfied", and provides "Always Prepared and Attentive, "full cycle super-value service, let customers truly feel more timely and effective service commitment.



► **365x24 全年无休服务**
365 Day x24 Hour year-round service

徐工港机在全国建立有完善的服务网络，服务人员365天待命，24小时全年无休地为您提供“10分钟快速响应，4小时到达，24小时完工”的用心服务。

XCMG port machinery has established a complete service network around country. Service personnel are available for 365 days, 24 hours, all year round to provide you with the whole-hearted service of "respond within 10 minutes, arrive in 4 hours and finish in 24 hours in main areas."



► **优质备件保障** Superior spare parts guarantee

徐工港机在本部、重点区域设立有备件储备仓库，在全国各地利用服务车辆优势，建立移动备件库，拥有完整的备件储备、发运体系，可为客户提供优质、高效的原厂配件服务。

XCMG port machinery has established spare parts storage warehouses in Headquarter and key areas. Based on the advantage of service cars, XCMG port machinery has set up a mobile spare parts warehouse with a complete spare parts storage and delivery system, which enables customers to get high-quality and efficient parts service by the original manufacturer.

13 QUICK INSPECTION AND MAINTENANCE 快捷检测与保养

► **合理的管路与电路布局，有效减少交叉干涉，方便设备检修**

Reasonable pipeline and circuit layout, effectively reduce cross interference, facilitate equipment maintenance;



► **发动机、变速箱检测、加油口集中在一个区域，超大检修空间，便于维护和保养**

Engine, transmission inspection and refueling port are concentrated in one area, realizing large inspection space which is convenient for maintenance and service

► **设置独立的电控柜与故障检测接口，故障检测更加方便快捷**

Independent electric control cabinet and fault detection interface are set to make fault detection more convenient and quick



► **高位发动机进气口，有效避开了扬尘区，延长空气滤芯更换周期，使用更加节省。**

High engine intake effectively avoids the dust area and extends the replacement cycle of air filter element, more economical to use.

14 CONSTRUCTION CASE

施工案例

Официальный дилер
спецтехники XCMG в России
+7 (495) 641-80-47
info@techno-xcmg.ru



西藏



山西



天津



内蒙古



辽宁



浙江



广州



山东



泰国



江苏



黑龙江

K系列
集装箱正面吊运起重机