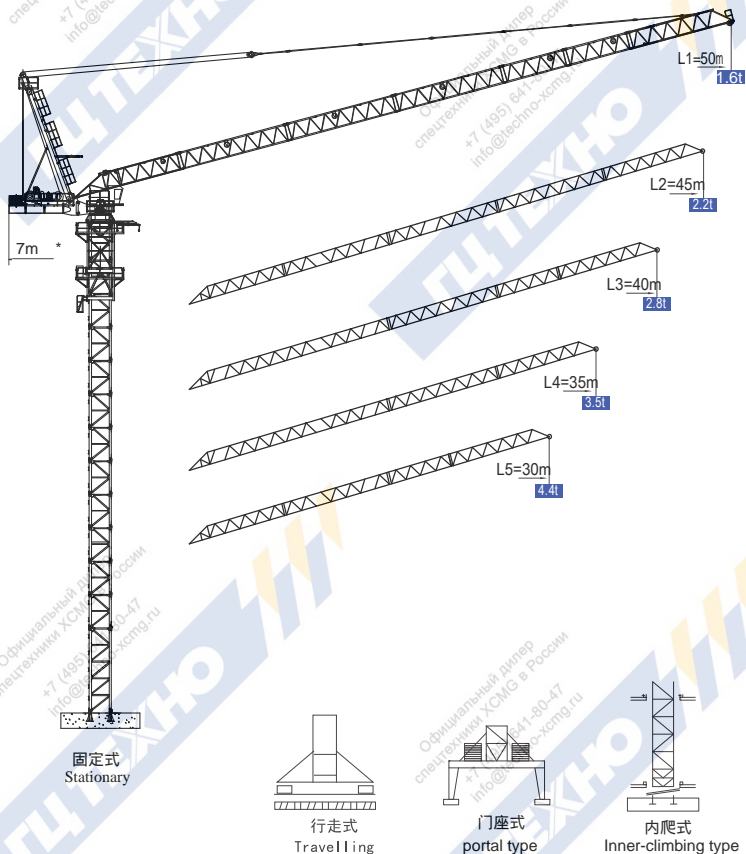


# XGTL120(5016-8)

## 外形尺寸 DIMENSIONS

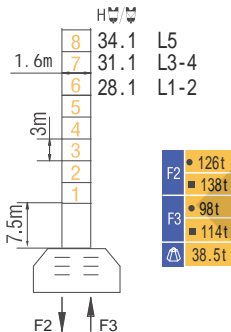


★ 可变换的其他安装方式同我们协商 Mounting possibilities, Consult us!

动臂系列 Luffing

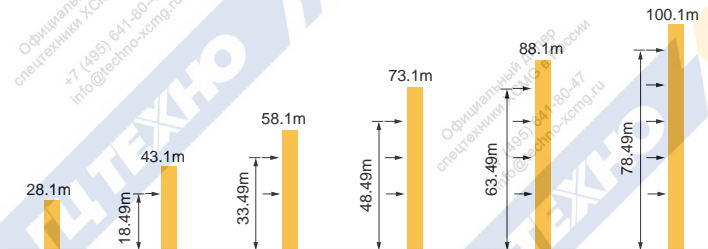
# XGTL120(5016-8)

技术状态 STATUS



- H 臂根铰点高度 Height of hinged point at jib root ● 工作状态 In service ■ 非工作状态 Out of service  
 最大臂长最大独立高度时的整机自重 (不含配重、压重、吊重)  
 Weight with max free-standing height and max jib (without counter-weight and load)

## 附着 Anchorages



\* 如需达到更高的高度, 请与我们联系! For greater heights, consult us!

## 起重特性 Load Diagrams

起重臂长 Jib length	$R_{min}$	$R(C_{max})$	$C_{max}$	15	20	25	30	35	40	45	50
50m		3.94	31.72	4000	4000			3400	2661	2076	1600
		3.94	18.74	8000	8000	7393	5525	4228	3274	2545	1973
45m		3.42	32.45	4000	4000			3541	2795	2200	
		3.42	19.11	8000	8000	7575	5695	4388	3428	2695	2121
40m		2.90	32.37	4000	4000			3535	2800		
		2.90	18.92	8000	8000	7490	5652	4374	3437	2722	
35m		2.38	32.44	4000	4000			3550			
		2.38	18.82	8000	8000	7452	5646	4394	3474		
30m		1.86	30.00	4000	4000						
		1.86	18.72	8000	8000	7409	5631	4400			

★ 其他起重性能需求，请与我们联系！ Other lifting capacity, consult us!

## 配重配置 BALLAST

Counter-jib ballast			6200 (kg)		2300 (kg)	
		PZ6200		PZ2300		
50m	7m	1		1		8500
45m	7m	1		1		8500
40m	7m	1		1		8500
35m	7m	1		1		8500
30m	7m	1		1		8500

# XGTL120(5016-8)

## 传动机构 Mechanisms

机构 Mechanisms	图例 Example	机构代号 Model	速度 (m/min) Speed	起重量 (t) Hoist Weight	绳容量 Rope Capacity	功率 (kW) Power	
起升 Hoisting		30JLF20A		0~40	4	550  >550*	30
			0~60	3			
			0~80	1.5			
				0~20	8		
			0~30	6			
			0~40	3			
变幅 Trolleying		30JDF35B	≤ 3 min			30	
回转 Slewing		JH08T6	0~0.7r/min			2×5.5	
行走 Travelling		RT	0~24m/min			2×5.2	
电源 Main Supply					~380(±10%) 50Hz		
总功率 (不含顶升和行走) Gross Power (Excluding climbing and travelling)					71kW		

★ 请与我们联系 Consult us, Please!

本样册技术参数不受法律约束, 具体以相应产品说明书为准

These brochure of specifications and data are not legally binding, specific instructions please based on our product manuals.

V. 2017-06B1