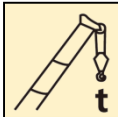


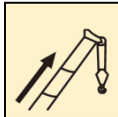
# XCT80\_S汽车起重机 / Truck Crane

## 技术规格书

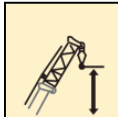
Technical specifications



80t



48m



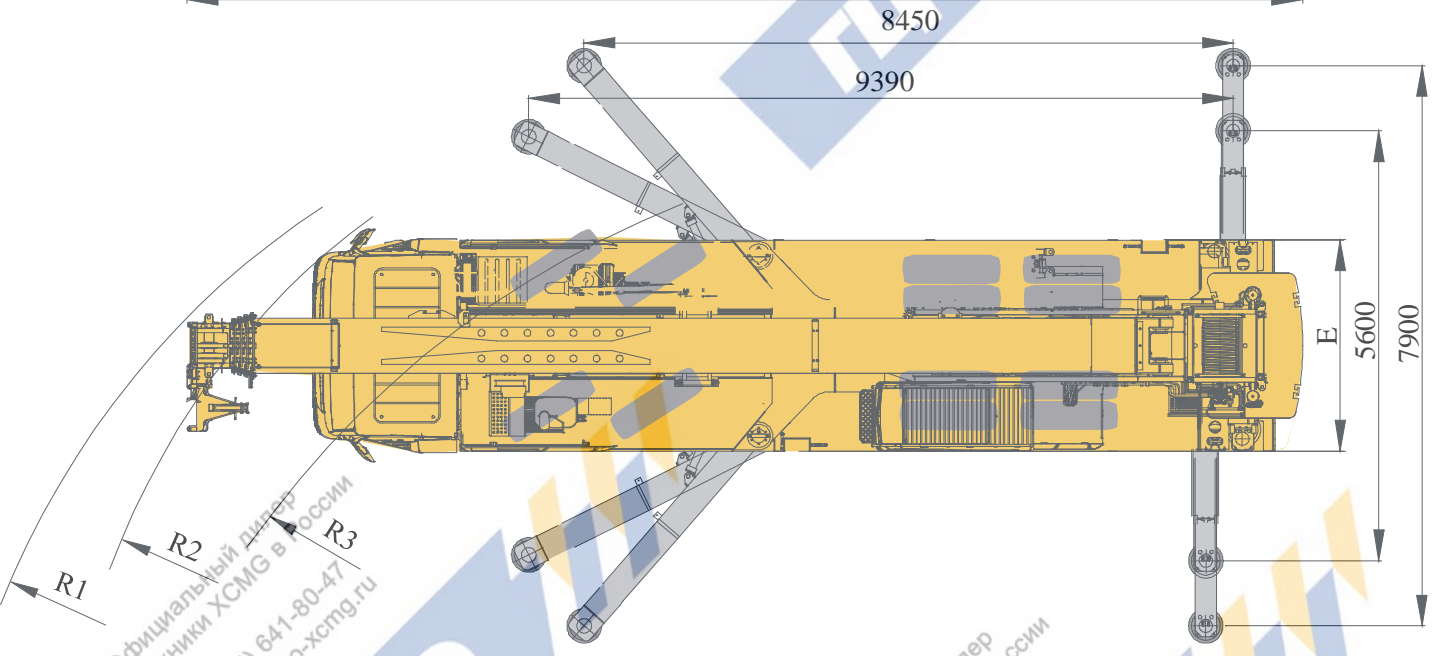
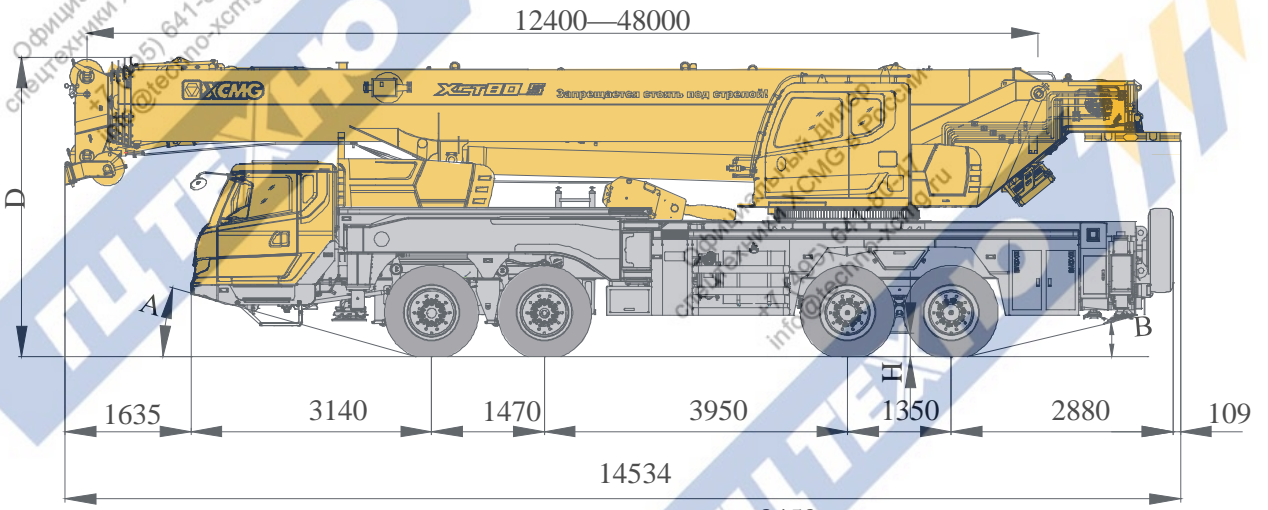
74m



# 目录 Content

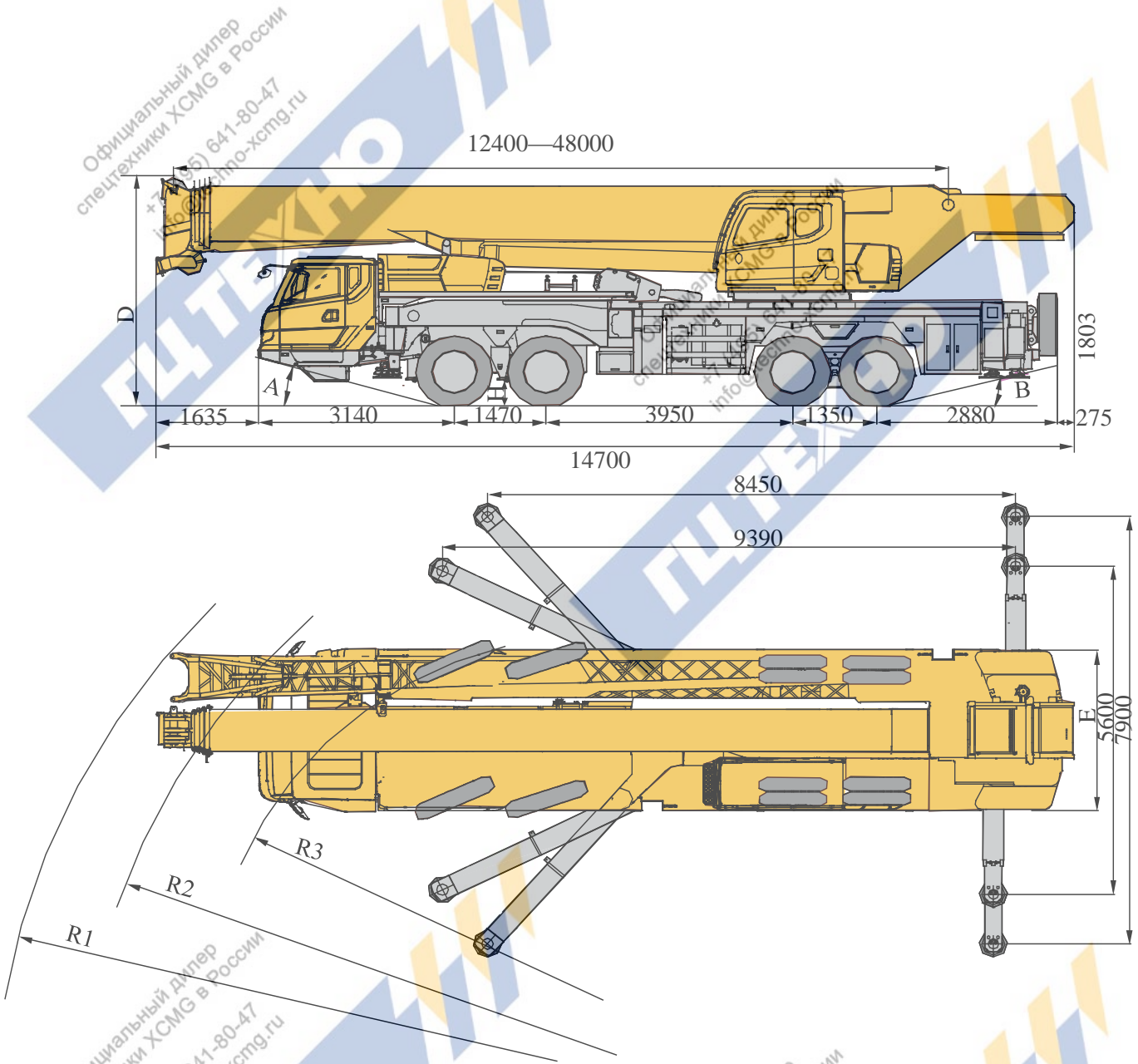
目录 Content	
尺寸参数 Dimensions	4-6
技术规格 Product Specifications	7-10
重量/作业速度 Weight / Working speeds	11-12
平衡重 Counterweight	13
臂架组合方案 Boom / Jib combinations	14-15
主臂 Boom	16-18
副臂 Jib	19-20
注意事项 Notes	21
符号标识 Description of symbols	22
主要技术参数表 Transportation plan	23-24

# 尺寸参数 Dimensions



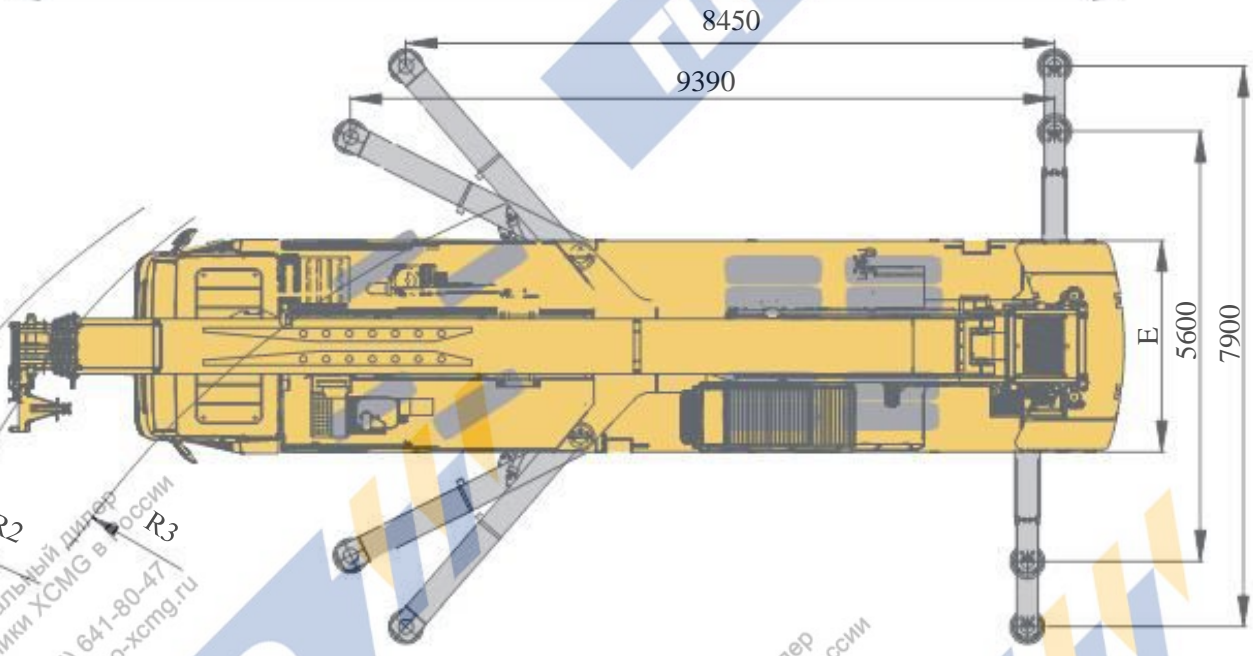
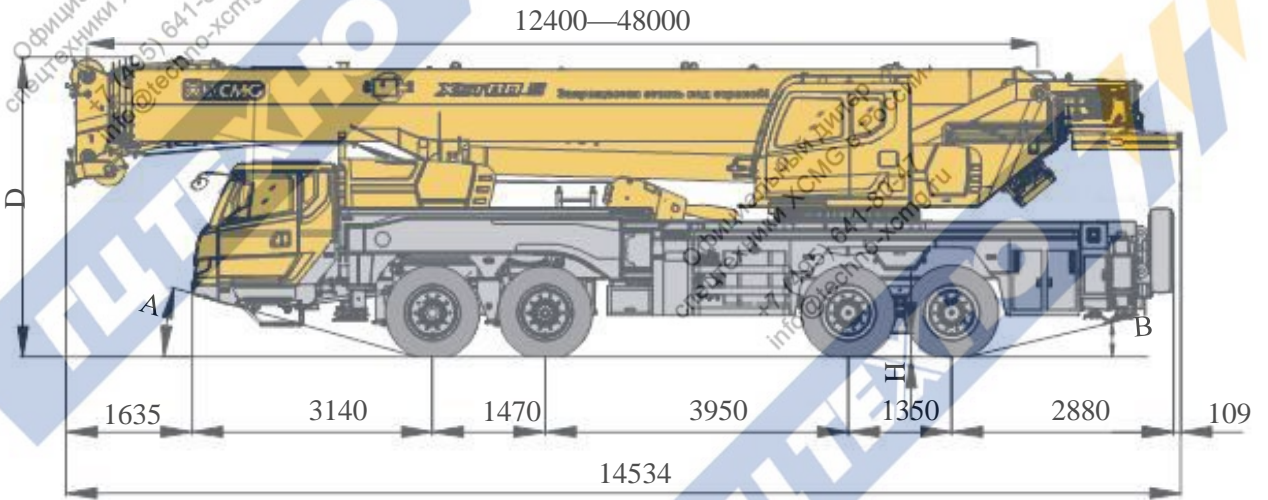
	A	B	D	E	R1	R2	R3	H
12.00R24-20PR*	16°	11.5°	3910	2750	14950	14050	12000	305

# 尺寸参数 Dimensions



	A	B	D	E	R1	R2	R3	H
12.00R24-20PR*	16°	11.5°	3910	2750	14950	14050	12000	305


# 尺寸参数 Dimensions



	A	B	D	E	R1	R2	R3	H
12.00R24-20PR*	16°	11.5°	3910	2750	14950	14050	12000	305

# 技术规格


## Technical specifications

 Chassis	Configuration
<b>Frame</b>	Designed and manufactured by XCMG, with all covered walking surface, anti-torsion box structure and optimal load-bearing structure design, made of high strength steel. ●
<b>Outrigger</b>	4 outriggers, K-shaped arrangement, rear lateral outrigger are two stage , lateral and vertical outrigger controlled by the hydraulic control. Both sides of the chassis equip-ed with outrigger operating system, lighting and speed buttons; outrigger cylinders equipped with one-way valve, and the vertical outrigger has two-way hydraulic lock. ● Scale of outrigger float:Φ450 Most force on outrigger:730KN.
<b>Engine</b>	D10.38-50, in-line six-cylinder water-cooled EFI diesel engine, manufactured by CNHTC, rated power 276kW/2000rpm, max torque 1560Nm/1200-1500rpm, the national V emission standards. ●
<b>Gearbox</b>	Mechanical transmission manufactured by Fast, with 10 forw-ard gears and 2 reverse gears available ●
<b>Alxes</b>	High strength axle with reliable performance, manufactured by xuzhou Meritor,1&2 alxes sreering,3&4 alxes driving. ●
<b>Suspensio n</b>	Front suspension is steel spring,rear suspension is rubber spring. ●
<b>Tires</b>	12 tires and 1 spare tire, 1&2 axles are equipped with single tire,3&4 axles are equipped with double tire. ● Tire specifications:12.00R24-20PR*
<b>Brakes</b>	Service brake: double-circuit air pressure brake, acting on all wheels. ● Parking brake: spring energy brake, acting on wheels of 2&3&4 axles. Auxiliary brake: engine retarded brake,
<b>Steering</b>	1&2 alxes sreering, mechanical steer with hydraulic assist ●
<b>Driver's cab</b>	Luxurious cab,equipped with electronic control glass,seat can be adjusted, electronic control mirror, LCD and CD player,2 kilograms fire extinguisher. Cold-warm air-condition is equipped. ●
<b>Electrical system</b>	24V(DC),2 battery in series. ● Generator:24V,80A
<b>Safety devices</b>	Double-way hydraulic valve ● GLONASS satellite positioning ● ABS ●

 Superstructure	Configuration
<b>Frame</b>	Designed and manufactured by XCMG; made of high-strength steel ●
<b>Hydraulic system</b>	The variable plunger pump driven by engine is used to control hoisting, elevating and telescoping; and the gear pump is used for slewing operations. ● Load sensitive proportional multi-way change valve. Air-cooled hydraulic oil radiator; Volume of hydraulic oil tank: 1000L
<b>Operating mode</b>	Hydraulic pilot control of all crane movements using two control levers. All crane movements are controlled by hydraulic pump and proportional valve. ●
<b>Main winch system</b>	Hydraulic controlled speed regulation, groove drum is equipped, driven by hydraulic motor through planetary gear reducer, and built-in normally closed brake and counterbalance valve are available. ●
<b>Auxiliary winch system</b>	Hydraulic controlled speed regulation, groove drum is equipped, driven by hydraulic motor through planetary gear reducer, and built-in normally closed brake and counterbalance valve are available. ●
<b>Slewing system</b>	Single-row four-point contact ball type with exter nal slewing ring, planetary gear slewing reducer is driven by hydraulic motor which can slew 360° continuously. ● It has functions of power control or free slewing and stepless speed regulation is available.
<b>Elevating System</b>	A single-supported double acting cylinder with balance valve equipped is used for front support elevation. ●
<b>Operator's cab</b>	New fully-enclosed steel tiltable cab with a full-view front window. Safety glass and sun shield are used for windows. Wipers are fitted for the windshield and roof window. The cab features a new ergonomic seat design with backrest adjustment and armrests with joysticks fitted. A sliding door and a pull-out step are available. Air conditioner are available. ●
<b>Safety devices</b>	Hydraulic balance valve; Hydraulic relief valve; Double-way hydraulic valve; LMI; spring aligning device for joystick; ● Lowering limiter for preventing wire rope from over-releasing; Anti-two block at boom head for preventing wire rope from over-winding. ●
<b>Safety devices</b>	Anemometer ○ Functions for EAC certificate, including virtual wall, low temperature warning , high voltage warning functions and load emergency lowering for safe ○
<b>Counterweight</b>	1.5t ● 13.5t ○

## 技术规格

## Technical specifications

 Boom system	Config uration
<b>Boom</b> 5-section, U-shape cross section, welding structure. Double-cylinder plus ropes telescoping system is designed to extend/retract the boom. Boom length:12.4m ~ 48m.	●
<b>Boom Single top</b> Boom single top is installed on the top of boom and used for lifting operation of single line wire rope. The lifting performance of boom single top is the same with boom, but max. load capacity cannot exceed 6500kg.	●
<b>Jib</b> It is stowed beside the boom, consisted of a connecting bracket, a rotating bracket and two lattice bi-fold jibs with jib offset angle: 0°,15°,30 Jib length 10.5m/17.5m.	○
<b>Boom extension</b> Lattice welding structure , 9m	○

Product parts list is as mentioned above.  
Please refer to the product quotation for specific parts.

### Symbol explanation:

- — it means the standard configuration;
- — it means the optional configuration.

## 重量 Weight



车桥 Axle	1	2	3	4	总重量 Total weight
t	9.5	9.5	12	12	43 <sup>1)</sup>
t	10	10	13	13	46 <sup>2)</sup>
t	8.3	8.3	15.7	15.7	48 <sup>3)</sup>

1) 上车携带5节主臂、主卷、55t钩、1.5t平衡重；不带7t钩、80t钩、副臂、副卷、13.5t平衡重；  
驱动形式：8×4；轮胎规格：12.00R24-20PR\*；

1) For the superstructure, 5 boom sections, main winch, 55t hook block and 1.5t counterweight are included, while 7t hook block, 80t hook block, jib, auxiliary winch and 13.5t counterweight are excluded.  
Driving type: 8×4; tire specification: 12.00R24-20PR\*.

2) 上车携带5节主臂、主卷、55t钩、副臂、副卷、1.5t平衡重；不带7t钩、80t钩、13.5t平衡重；  
驱动形式：8×4；轮胎规格：12.00R24-20PR\*；

2) For the superstructure, 5 boom sections, main winch, 55t hook block, jib, auxiliary winch and 1.5t counterweight are included, while 7t hook block, 80t hook block and 13.5t counterweight are excluded.  
Driving type: 8×4; tire specification: 12.00R24-20PR\*.

3) 上车携带5节主臂、主卷、55t钩、6t平衡重；不带7t钩、80t钩、副臂、副卷、9t平衡重；  
驱动形式：8×4；轮胎规格：12.00R24-20PR\*；

3) For the superstructure, 5 boom sections, main winch, 55t hook block and 6t counterweight are included, while 7t hook block, 80t hook block, jib, auxiliary winch and 9t counterweight are excluded.  
Driving type: 8×4; tire specification: 12.00R24-20PR\*.



吊钩 Hook	倍率 No. of lines	吊钩重量/kg Weight kg	尺寸 Size/mm	备注 Remarks
80t	12	700	1735×554×520	单钩 Single hook, 标配 Standard
55t	8	470	1600×520×370	单钩 Single hook, 选配 Optional
7t	1	210	717×370×370	单钩 Single hook, 标配 Standard

## 作业速度

## Working speeds



12.00R24\*



2.5 ~ 80



45%



### 作业机构

Drive

### 作业速度

Working speed

### 最大单绳拉力

Max. single line pull

### 钢丝绳直径/长度

Rope diameter/ length



0-145

m/min, 单绳, 第四层  
m/min, single line, 4th layer

64.1 kN

20 mm/240m



0-90

m/min, 单绳, 第四层  
m/min, single line, 4th layer

63.7 kN

20 mm/180 m



0-2 r/min



从-2°抬起至81°约55s

Approx. 55s for boom elevation from -2 ° to 81 °



从12.4m伸出至48m约110s

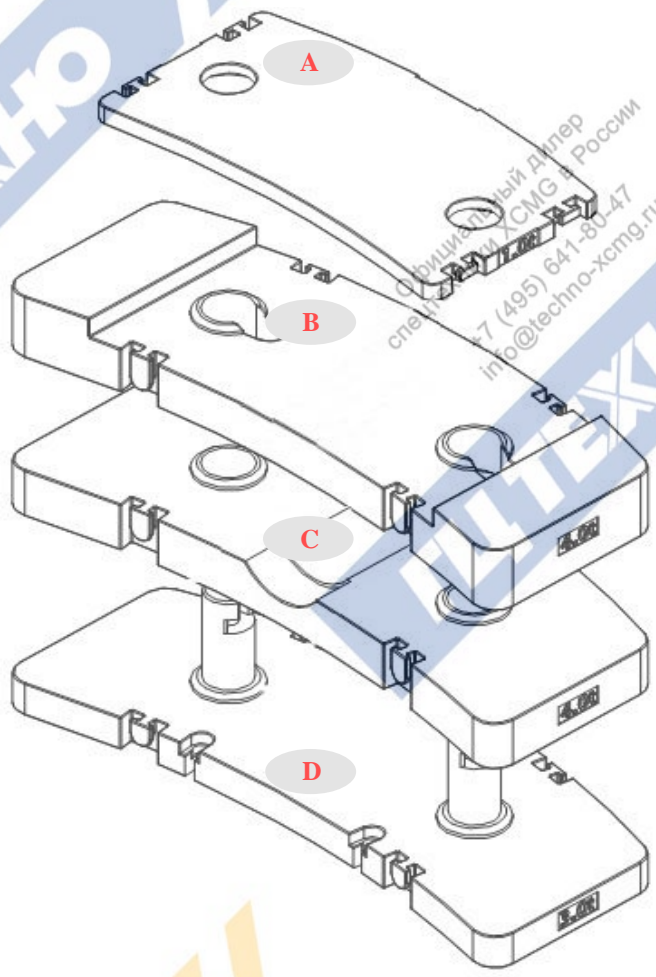
Approx. 110s for boom extension from 12.4m to 48m

Официальный дилер  
спецтехники XCMG в России  
+7 (495) 641-80-47  
info@techno-xcmg.ru

Официальный дилер  
спецтехники XCMG в России  
+7 (495) 641-80-47  
info@techno-xcmg.ru

# 平衡重 Counterweight

Официальный дилер  
спецтехники XCMG в России  
+7 (495) 641-80-47  
info@techno-xcmg.ru



平衡重 Counterweight	A	B	C	D
尺寸 (长×宽×高) m Size (L×W×H) m	1890×1300 ×110	2700×1490×300	2700×1490×270	2700×1490×620
重量 t Weight t	1.5	4.5	4.5	4.5

工况模式 Working mode	1.5t	6t	10.5t	15t
组合形式 Combinations	A	A+B	A+B+C	A+B+C+D

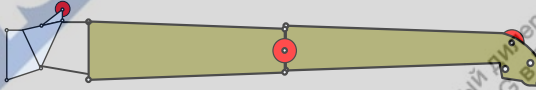
# 臂架组合方案

## Boom / Jib combinations

副臂 – 10.5m  
Jib – 10.5m







副臂 – 17.5m  
Jib – 17.5m



主臂加长节 –  
26.5m  
Telescopic boom  
extension – 26.5m



部件 Component	结构形式 Structure	尺寸 (长×宽×高) mm Size (L×W×H) mm	重量 kg Weight kg
连接架 Connection bracket		1910×740×1050	221
主臂加长节 Telescopic boom extension		9000×830×1400	600
一节副臂总成 First jib section assembly		9340×620×900	567
二节副臂总成 Second jib section assembly		6520×300×430	259

Официальный дилер  
спецтехники XCMG в России  
+7 (495) 641-80-47  
info@techno-xcmg.ru

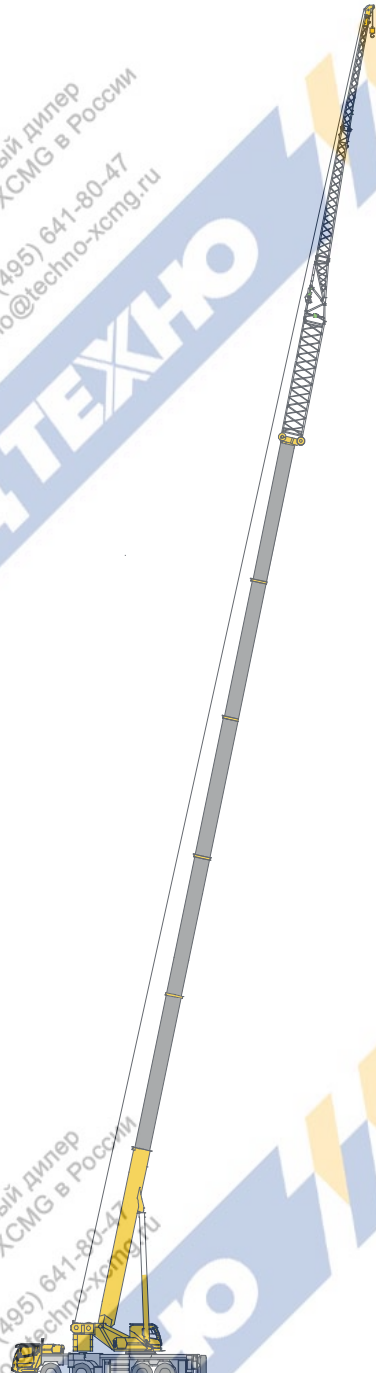
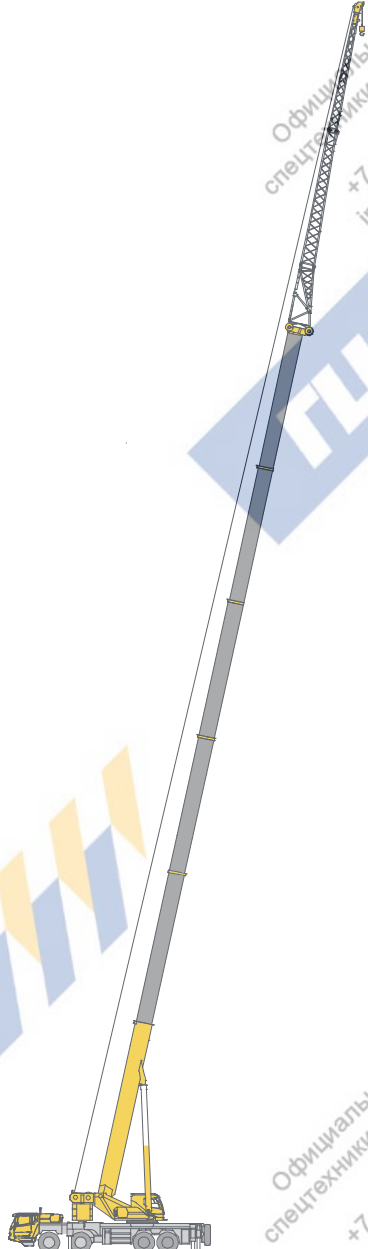
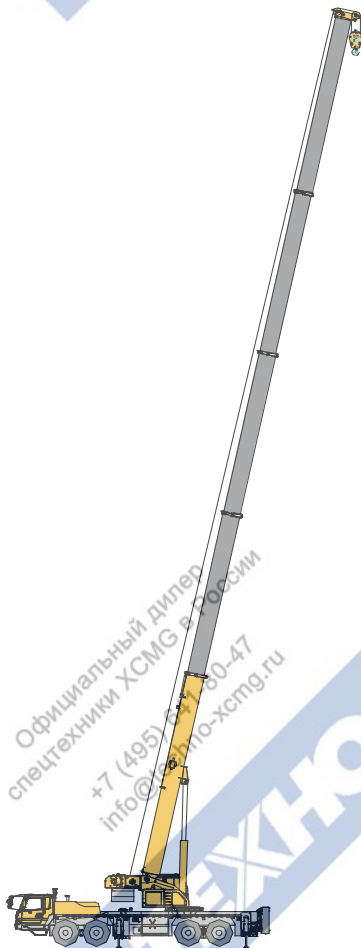
Официальный дилер  
спецтехники XCMG в России  
+7 (495) 641-80-47  
info@techno-xcmg.ru

# 臂架组合方案

## Boom / Jib combinations

Официальный дилер  
спецтехники XCMG в России  
+7 (495) 641-80-47  
info@techno-xcmg.ru

Официальный дилер  
спецтехники XCMG в России  
+7 (495) 641-80-47  
info@techno-xcmg.ru



**主臂**  
Telescopic boom

T : 12.4~48m

**副臂**  
Jib

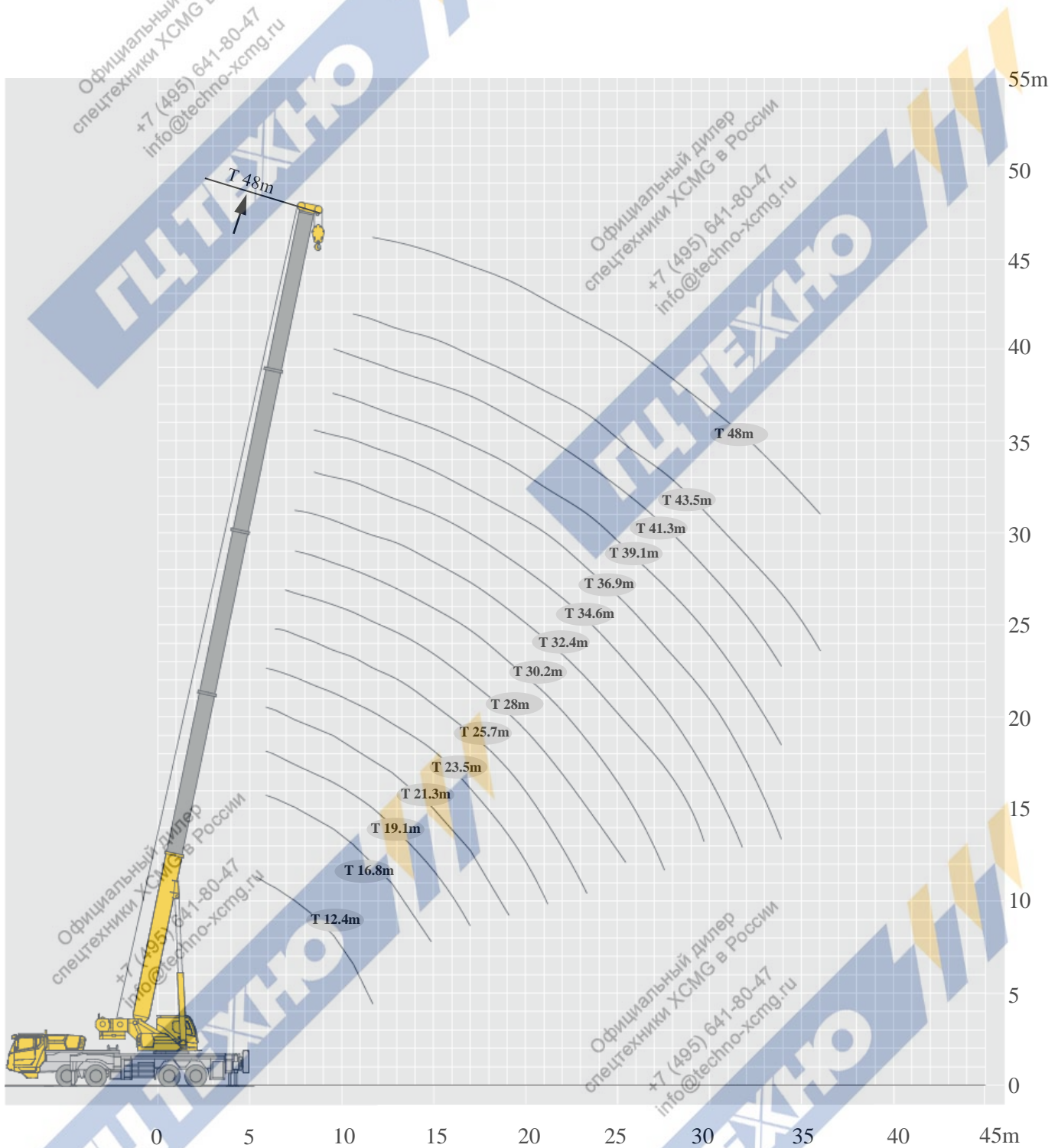
T : 48m  
J : 10.5~17.5 m

**主臂加长节**  
Telescopic boom extension

T : 48m  
I : 9m  
J : 10.5~17.5m

# 起升高度曲线图 Lifting heights

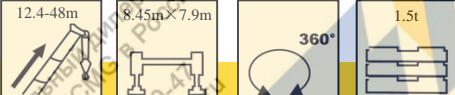
主臂  
Boom



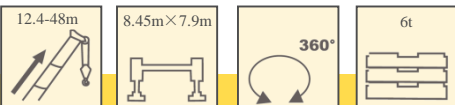
# 起重性能表

## Lifting capacities

T 12.4~48m



	12.4m	16.8m	19.1m	21.3m	23.5m	25.7m	28m	30.2m	32.4m	34.6m	36.9m	39.1m	41.3m	43.5	48m
3	80														3
3.5	75														3.5
4	75	63.3	37.1	46.0											4
5	62	58	34.5	45.0	36.5	29.5	35.0								5
6	49.3	48.6	32.3	40.0	34.5	27.2	34.7	32.4	23.8						6
7	34	33.4	30.5	33.0	32.6	25.1	31.9	29.7	22.2	25.4					7
8	25.3	24.8	27.6	24.4	26.8	23.6	26.2	27.9	20.9	23.3	20.5	14.3	19.6		8
9	19.7	19.3	21.8	18.9	21.1	22.4	20.5	22.1	19.6	21.5	19.6	13.8	18.2	13.1	9
10		15.4	17.8	15.1	17.1	18.7	16.6	18.0	18.4	17.5	17.8	13.2	17.2	13.0	12.7
12		10.2	12.5	9.9	11.9	13.4	11.4	12.8	13.9	12.2	13.3	12.1	12.8	12.5	11.7
14			9.1	6.7	8.5	9.9	8.0	9.3	10.4	8.8	9.8	10.7	9.4	10.2	9.7
16				4.5	6.2	7.6	5.8	7.0	8.0	6.5	7.5	8.3	7.0	7.8	7.4
18					4.6	5.9	4.1	5.3	6.3	4.9	5.8	6.6	5.4	6.1	5.7
20						4.6	2.9	4.1	5.0	3.6	4.5	5.3	4.1	4.8	4.5
22							2.0	3.1	4.0	2.7	3.6	4.3	3.2	3.9	3.5
24								2.3	3.3	1.9	2.8	3.5	2.4	3.1	2.7
26									2.6	1.3	2.1	2.8	1.7	2.4	2.0
28										0.8	1.6	2.3	1.2	1.9	1.5
30											1.1	1.8	0.8	1.2	1.0

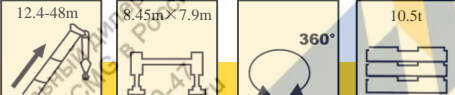


	12.4m	16.8m	19.1m	21.3m	23.5m	25.7m	28m	30.2m	32.4m	34.6m	36.9m	39.1m	41.3m	43.5	48m
3	80														3
3.5	75														3.5
4	75	63.3	37.1	46.0											4
5	62	58	34.5	45.0	36.5	29.5	35.0								5
6	54	50	32.3	40.0	34.5	27.2	34.7	32.4	23.8						6
7	41.5	40.8	30.5	38.0	32.6	25.1	31.9	29.7	22.2	25.4					7
8	31.2	30.6	28.8	30.2	31.0	23.6	29.5	27.9	20.9	23.3	20.5	14.3	19.6		8
9	24.5	24	26.6	23.7	25.9	22.4	25.3	26.7	19.6	21.9	19.6	13.8	18.2	13.1	9
10		19.4	21.9	19.1	21.2	21.2	20.6	22.1	18.4	20.5	17.8	13.2	17.2	13.0	12.7
12		13.4	15.7	13.1	15.0	16.5	14.5	15.9	16.2	15.4	16.0	12.1	15.9	12.5	11.7
14			11.8	9.4	11.2	12.6	10.7	12.0	13.0	11.5	12.5	10.7	12.0	12.0	11.4
16				6.7	8.5	9.9	8.1	9.3	10.3	8.8	9.8	9.6	9.4	10.1	9.7
18					6.5	7.9	6.1	7.3	8.3	6.8	7.8	8.5	7.3	8.1	7.7
20						6.4	4.6	5.8	6.8	5.4	6.3	7.0	5.8	6.6	6.2
22							3.5	4.6	5.6	4.2	5.1	5.8	4.7	5.4	5.0
24								3.7	4.6	3.3	4.1	4.9	3.7	4.4	4.1
26									3.8	2.5	3.4	4.1	3.0	3.7	3.3
28										1.9	2.7	3.4	2.3	3.0	2.6
30											2.2	2.9	1.8	2.4	2.1
32												2.4	1.3	2.0	1.6
34														1.6	1.2
36															0.8


# 起重性能表

## Lifting capacities

T 12.4~48m



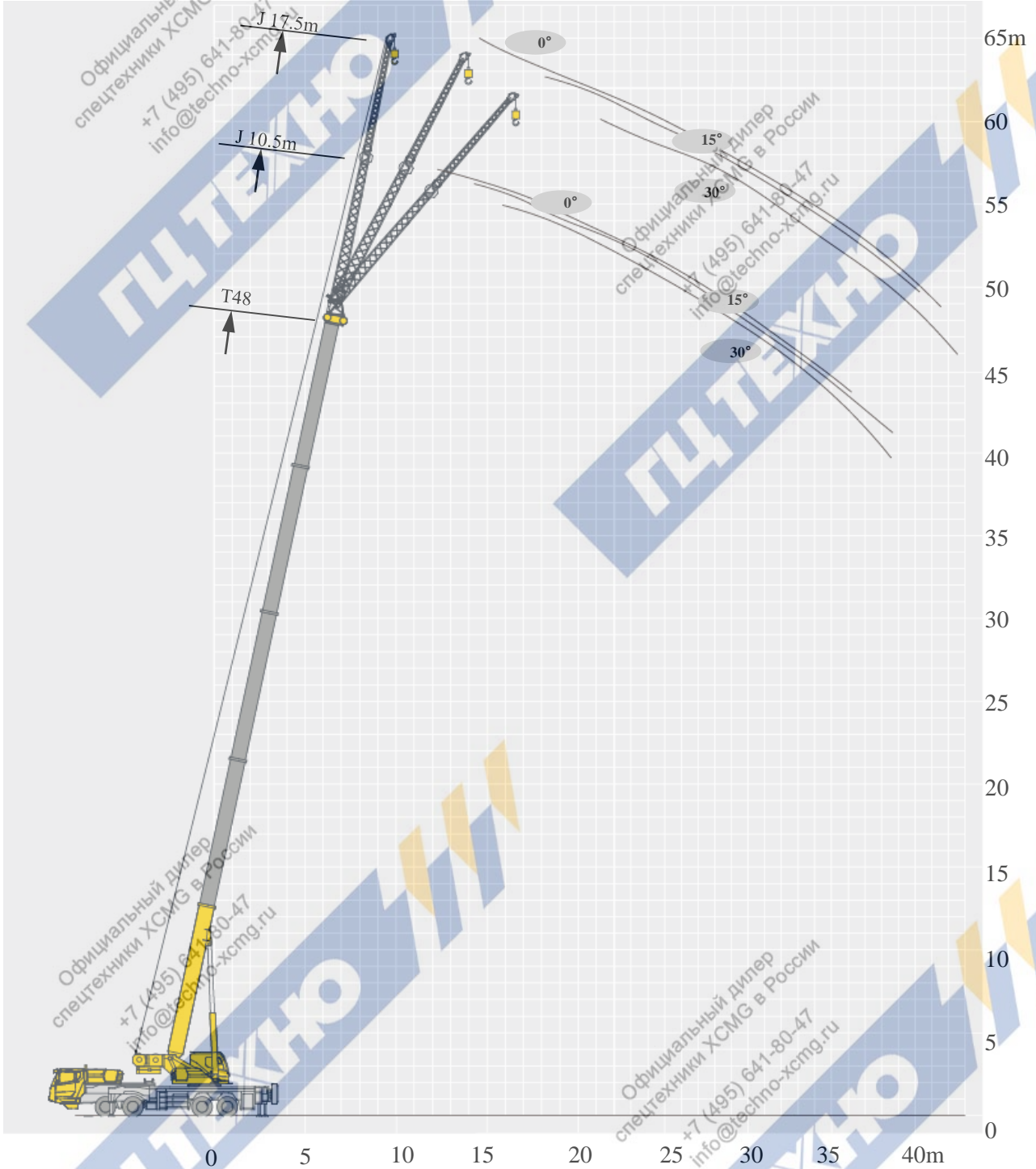
	12.4m	16.8m	19.1m	21.3m	23.5m	25.7m	28m	30.2m	32.4m	34.6m	36.9m	39.1m	41.3m	43.5	48m	
3	80														3	
3.5	75														3.5	
4	75	63.3	37.1	46											4	
5	62	58	34.5	45	36.5	29.5	35								5	
6	54	50	32.3	40	34.5	27.2	34.7	32.4	23.8						6	
7	45	44	30.5	38	32.6	25.1	31.9	29.7	22.2	25.4					7	
8	36.4	35.8	28.8	35.5	31	23.6	29.5	27.9	20.9	23.3	20.5	14.3	19.6		8	
9	28.8	28.3	27.4	28	29.6	22.4	27.5	26.7	19.6	21.9	19.6	13.8	18.2	13.1	9	
10		23.1	24.8	22.7	24.8	21.2	24.3	25.3	18.4	20.5	17.8	13.2	17.2	13	12.7	10
12		16.2	18.5	15.9	17.8	19.2	17.3	18.7	16.2	18.2	16	12.1	16.6	12.5	11.7	12
14			14.1	11.7	13.4	14.9	13	14.3	14.4	13.8	14.3	10.7	14.3	12	11.4	14
16				8.8	10.5	11.8	10	11.2	12.2	10.8	11.7	9.6	11.3	10.6	10.3	16
18					8.3	9.6	7.9	9	10	8.6	9.5	8.5	9.1	9.5	9.1	18
20						7.9	6.2	7.4	8.3	7	7.8	7.7	7.4	8.1	7.7	20
22							4.9	6.1	7	5.6	6.5	7.06	6.1	6.8	6.4	22
24								5	5.9	4.6	5.4	6.2	5	5.7	5.4	24
26									5	3.7	4.5	5.3	4.1	4.8	4.5	26
28										2.9	3.8	4.5	3.4	4.1	3.7	28
30											3.2	3.9	2.8	3.4	3.1	30
32												3.3	2.2	2.9	2.5	32
34														2.4	2.1	34
36															1.7	36



	12.4m	16.8m	19.1m	21.3m	23.5m	25.7m	28m	30.2m	32.4m	34.6m	36.9m	39.1m	41.3m	43.5	48m	
3	80														3	
3.5	75														3.5	
4	75	63.3	37.1	46											4	
5	62	58	34.5	45	36.5	29.5	35								5	
6	54	50	32.3	40	34.5	27.2	34.7	32.4	23.8						6	
7	45	44	30.5	38	32.6	25.1	31.9	29.7	22.2	25.4					7	
8	38	38	28.8	36.4	31	23.6	29.5	27.9	20.9	23.3	20.5	14.3	19.6		8	
9	32	32	27.4	32.3	29.6	22.4	27.5	26.7	19.6	21.9	19.6	13.8	18.2	13.1	9	
10		26.7	24.8	26.4	27.8	21.2	25.6	25.3	18.4	20.5	17.8	13.2	17.2	13	12.7	10
12		19	21.3	18.7	20.6	19.2	20.1	21.5	16.2	18.3	16	12.1	16.6	12.5	11.7	12
14			16.3	14	15.7	17.1	15.3	16.5	14.4	16	14.3	10.7	14.4	12	11.4	14
16				10.7	12.4	13.7	11.9	13.1	12.9	12.7	12.9	9.6	12.6	10.6	10.3	16
18					10	11.3	9.5	10.7	11.64	10.3	11.2	8.5	10.7	9.5	9.1	18
20						9.4	7.7	8.8	9.8	8.4	9.3	7.7	8.9	8.5	8.2	20
22							6.3	7.4	8.3	6.9	7.8	7.06	7.4	7.8	7.4	22
24								6.2	7.1	5.8	6.6	6.4	6.2	6.9	6.5	24
26									6.1	4.8	5.6	5.9	5.3	5.9	5.6	26
28										4	4.8	5.4	4.4	5.1	4.7	28
30											4.1	4.8	3.7	4.4	4	30
32												4.2	3.1	3.8	3.4	32
34														3.3	2.9	34
36															2.5	36

# 起升高度曲线图 Lifting heights

副臂  
Jib



# 起重性能表

## Lifting capacities

J 10.5m/17.5m

J	10.5m			17.5m			J
	0°	15°	30°	0°	15°	30°	
	80	6.5	4.6	4.4	4.0	2.5	
78	6.3	4.5	4.3	3.7	2.2	1.7	78
75	6.0	4.1	3.8	3.2	2.0	1.6	75
72	5.2	3.8	3.6	2.7	1.8	1.5	72
70	4.8	3.6	3.5	2.5	1.7	1.5	70
65	4.0	3.3	3.1	1.9	1.5	1.3	65
60	3.2	2.9	2.6	1.7	1.4	1.3	60
55	2.4	2.2	2.1	1.4	1.3	1.2	55
50	1.5	1.4	1.4				50

J	10.5m			17.5m			J
	0°	15°	30°	0°	15°	30°	
	80	6.5	4.6	4.4	4.0	2.5	
78	6.3	4.5	4.3	3.7	2.2	1.7	78
75	6.0	4.1	3.8	3.2	2.0	1.6	75
72	5.2	3.8	3.6	2.7	1.8	1.5	72
70	4.8	3.6	3.5	2.5	1.7	1.5	70
65	3.7	3.3	3.1	1.9	1.5	1.3	65
60	2.5	2.3	2.2	1.7	1.4	1.3	60
55	1.7	1.6	1.5	1.1	1.0	0.9	55
50	1.0	0.9	0.8				50

J	10.5m			17.5m			J
	0°	15°	30°	0°	15°	30°	
	80	6.5	4.6	4.4	4.0	2.5	
78	6.3	4.5	4.3	3.7	2.2	1.7	78
75	6.0	4.1	3.8	3.2	2.0	1.6	75
72	5.2	3.8	3.6	2.7	1.8	1.5	72
70	4.5	3.6	3.5	2.5	1.7	1.5	70
65	2.8	2.6	2.4	1.9	1.5	1.3	65
60	1.8	1.7	1.6	1.1	1.0	0.9	60
55	0.9	0.8	0.8				55

J	10.5m			17.5m			J
	0°	15°	30°	0°	15°	30°	
	80	6.5	4.6	4.4	4.0	2.5	
78	6.3	4.5	4.3	3.7	2.2	1.7	78
75	5.9	4.1	3.8	3.2	2.0	1.6	75
72	4.2	3.6	3.2	2.7	1.8	1.5	72
70	3.4	2.9	2.7	2.5	1.7	1.5	70
65	1.9	1.7	1.6	1.3	1.0	0.9	65
60	0.9	0.8	0.7				60

# 注意事项

## Notes

1. 表中额定总起重量值，是在平整的坚固地面上本起重机能够保证的最大总起重量，包括吊钩和吊具的重量，所以为了估算重物重量，必须减去上述的装置重量。
2. 表中的工作幅度为起吊重物离地时起重物到起重机回转轴线的水平距离，是包括起重臂变形量在内的实际值，因而起吊前应考虑起重臂变形量。
3. 只允许在5级(瞬时风速14.1m/s，风压125N/m<sup>2</sup>)风以下进行作业。
4. 吊重前操作者必须对物体的重量和工作范围了解后选择合适的作业工况，严禁超出表中的数值。幅度及臂长在相邻两个数值之间时，应依据两个数值中较小值确定起重作业。
5. 应按主臂仰角范围作业，即使是空载，也不应使主臂仰角处于范围外，谨防整机倾翻。
6. 表中的主臂长度应要按照每节臂的伸缩要求进行伸出。

1. The total rated loads given in the rated load charts are the maximum lifting capacity when the crane is set up on firm and level ground, which includes the weight of the hook block and slings. The weight of above-mentioned devices should be deducted to correctly calculate the load weight.
2. The working radius shown in the rated load charts is the radius when the load is lifted off the ground, and it is the actual value including loaded boom deflection.
3. A lifting operation is permissible only when the wind force is below grade 5 (instantaneous wind speed is 14.1 m/s, wind pressure is 125 N/m<sup>2</sup>).
4. Before beginning lifting operation, the operator should know the weight of the load to be lifted and its working range, and then select proper working conditions. Never operate the crane beyond the limit shown in the chart. Use the lower value from the chart when the boom length or working radius is between the range of values.
5. Observe the boom angle limit. Never operate the crane with the boom angle beyond the recommended limit even if a load is not being carried. Otherwise, the crane will tip.
6. The boom length given in the rated load charts should accord with the telescoping code of boom sections .

Официальный дилер  
спецтехники XCMG в России  
+7 (495) 641-80-47  
info@techno-xcmg.ru

ГЦТЕХНЮ

Официальный дилер  
спецтехники XCMG в России  
+7 (495) 641-80-47  
info@techno-xcmg.ru


ГЦТЕХНЮ

# 符号标识

## Description of symbols

### 常规标识

#### General symbols

	上车 Superstructure		底盘 Chassis
	起重能力 lifting capacity		车桥 Axle
	吊臂长度 Boom length		行驶速度 Driving speed
	工作幅度 Radius		爬坡能力 Grade ability
	吊臂仰角 Boom angle		轮胎 Tires
	主臂起升高度 Hoist height with Boom		支腿 Outriggers
	固定副臂长度 Fixed jib length		吊钩 Hook block
	副臂安装角 Jib offset angle		平衡重 Counterweight
	副臂起升高度 Hoist height with jib		卷扬 Winch
	主臂加长节 Boom extension		360°全回转 360° rotation

# 主要技术参数表

## Transportation plan

类别 Category	项目 Item	单位 Unit	参数 Parameter			
尺寸参数 Dimensions	外形尺寸 (长×宽×高) Outline size (length×width×height)	mm	14534×2750×3910 (43t状态) 14700×2750×3910 (46t状态) 14534×2750×3910 (48t状态)			
	轴距 Wheel base	mm	1470+3950+1350			
	轮距 (前/后) Track (Front/ Rear)	mm	2316/2316/2063/2063			
	前悬/后悬 Front/ Rear overhang	mm	3140/2880			
	前伸/后伸 Front/ Rear extension	mm	1635/109 (43t状态) 1635/275 (46t状态) 1635/109 (48t状态)			
重量参数 Weight	最大允许总质量	kg	43000	46000	48000	
	轴荷	一轴 1st axle	kg	9500	10000	8300
		二轴 2nd axle	kg	9500	10000	8300
		三轴 3rd axle	kg	12000	13000	15700
		四轴 4th axle	kg	12000	13000	15700
动力参数 Power	发动机型号 Engine model	—	D10.38-50			
	额定功率/转速 Engine rated power/rpm	kW/(r/min)	276/2000			
	最大净功率/转速 Max. net power/rpm	kW/(r/min)	274/2000			
	最大输出扭矩/转速 Engine rated torque/rpm	N.m/(r/min)	1560/1200-1500			
行驶参数 Travel	最高车速 Max. travel speed	km/h	≥80			
	最低稳定车速 Min. travel speed	km/h	2.5 ~ 3			
	最小转弯直径 Min. turning diameter	m	≤24			
	臂头最小转弯直径 Min. turning diameter at boom tip	m	≤29.9			
	最小离地间隙 Min. ground clearance	mm	305			
	接近角 Approach angle	°	16			
	离去角 Departure angle	°	11.5			
	制动距离 (制动初速度为30km/h) Braking distance (at 30 km/h)	m	≤10			
	最大爬坡能力 Max. grade ability	%	≥45			
	百公里油耗 Fuel consumption per 100 km	L	40			
噪音 Noise	加速行驶机外噪声 Exterior noise level	dB(A)	≤80			
	驾驶员耳旁噪声 Noise level at seated position	dB(A)	≤80			

# 主要技术参数表

## Transportation plan

类别 Category	项目 Item	单位 Unit	参数 Parameter		
主要性能参数 Main performance	最大额定总起重量 Max. total rated lifting capacity	t	80		
	最小额定工作幅度 Min. rated working radius	m	3		
	转台尾部回转半径 Turning radius at turntable tail	平衡重处 Counterweight	mm	4350	
		副卷处 Auxiliary winch	mm	4545	
	最大起重力矩 Max. load moment	基本臂 Base boom	kN.m	3175	
		最长主臂 Fully-extended boom	kN.m	1615	
		最长主臂+副臂 Fully-extended boom + Jib	kN.m	1011	
	支腿跨距 Outrigger span	纵向 Longitudinal	m	8.45	
		横向 Lateral	m	7.9(5.6)	
	起升高度 Hoist height	基本臂 Base boom	m	12.7	
		最长主臂 Fully-extended boom	m	48	
		最长主臂+副臂 Fully-extended boom + Jib	m	74.0	
	起重臂长度 Boom length	基本臂 Base boom	m	12.4	
		最长主臂 Fully-extended boom	m	48	
		最长主臂+副臂 Fully-extended boom + Jib	m	74.5	
副臂安装角 Jib offset angle		°	0、15、30		
工作速度参数 Working speed	起重臂起臂时间 Boom raising time	s	≤55		
	起重臂全伸时间 Boom fully extended time	s	≤110		
	最大回转速度 Max. slewing speed	r/min	≥2.0		
	支腿收放时间 Outrigger extending and retracting time	水平支腿 Outrigger beam	收 Retracting	s	≤20
			放 Extending	s	≤25
	垂直支腿 Outrigger jack	收 Retracting	s	≤30	
		放 Extending	s	≤40	
起升速度 (单绳,第四层,空载) Hoisting speed (single line, 4th layer, no load)	主起升机构 Main winch	m/min	≥145		
	副起升机构 Auxiliary winch	m/min	≥90		
噪声 Noise	机外辐射 Exterior noise level	dB ( A )	≤122		
	司机位置处 Noise level at seated position	dB ( A )	≤90		