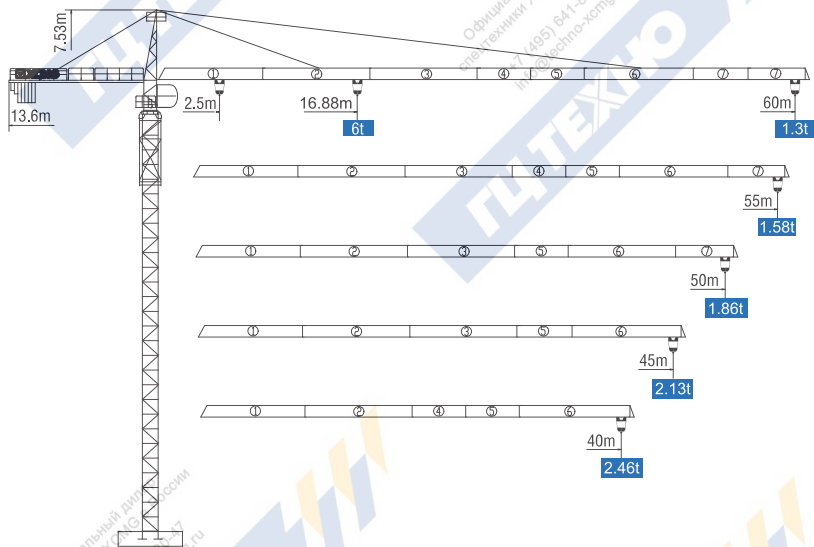


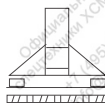
## 外形尺寸 DIMENSIONS



固定式  
Stationary



底架压重式  
Under frame loading



底架行走式  
Travelling



内爬式  
Inner-climbing type

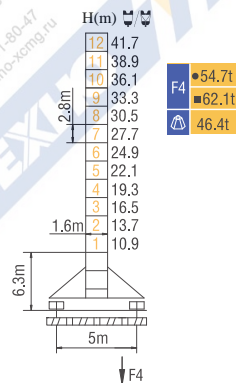
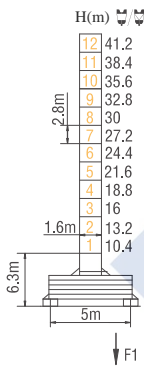
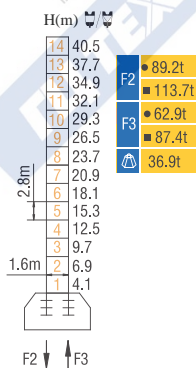
\* 可变换的其他安装方式同我们协商

Mounting possibilities Consult us

尖头系列 Topkit

# APC6013-6

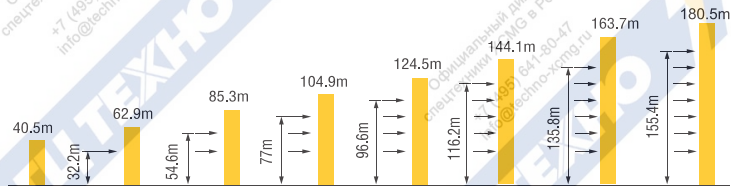
## 技术状态 STATUS



H 吊钩高度 Height of the hook ● 工作状态 In service ■ 非工作状态 Out of service











⚠ 不含平衡重最大臂长最大工作高度时的自重 Without load and ballast with longest jib and maximum height

## 附着 ANCHORAGES



如需达到更高的高度, 请与我们联系! For greater heights, consult us!

## 起重特性 LOAD DIAGRAMS

起重臂 (m) jib		R <sub>min</sub>	R (C <sub>max</sub> )	C <sub>max</sub>	幅度 (m) Range							
					20	25	35	40	45	50	55	60
60m		2.5	31.06	3t	3000		2599	2207	1903	1661	1464	1300
		2.5	16.88	6t	6000	3809	2539	2147	1843	1601	1404	1240
55m		2.5	32.86	3t	3000		2783	2367	2046	1789	1580	
		2.5	17.84	6t	6000	4068	2723	2307	1986	1729	1520	
50m		2.5	33.87	3t	3000		2885	2456	2124	1860		
		2.5	18.37	6t	6000	4212	2825	2396	2064	1800		
45m		2.5	33.94	3t	3000		2892	2462	2130			
		2.5	18.41	6t	6000	4223	2832	2402	2070			
40m		2.5	33.91	3t	3000		2889	2460				
		2.5	18.39	6t	6000	4219	2829	2400				

★其他起重性能需求, 请与我们联系! Any other lifting capacity, consult us!

## 配重配置 BALLAST

Counter-jib ballast		2700 (kg) / 1600 (kg) / 1200 (kg)			
	 (kg)	PZ2700	PZ1600	PZ1200	
60m	13.6m	5	1	1	
55m	13.6m	5	1	0	
50m	13.6m	4	1	1	
45m	13.6m	4	1	0	
40m	13.6m	4	0	0	

# APC6013-6

## 传动机构 Mechanisms

机构 Mechanisms	图例 Example	机构代号 Model	速度 (m/min) Speed	起重量 (t) Hoist Weight	绳容量 Rope Capacity	功率 (kW) Power	
起升 Hoisting		24QT15T	↑	8.5	3	400m >400m*	24/24/5.4
				40	3		
				80	1.5		
			↓	4.2	6		
				20	6		
				40	3		
变幅 Trolleying		33BD260	50/25m/min			3.3/2.2	
回转 Slewing		37HR100	0~0.6r/min			2×3.7	
行走 Travelling		RT	0~24m/min			2×5.2	
电源 Main Supply					~380V (±10%) 50Hz		
总功率 (不含顶升和行走) Gross Power (Excluding climbing and travelling)					34.7kW		

Официальный дилер  
спецтехники XCMG в России  
+7 (495) 641-80-47  
info@techno-xcmg.ru

Официальный дилер  
спецтехники XCMG в России  
+7 (495) 641-80-47  
info@techno-xcmg.ru

★ 请与我们联系 Consult us, Please!

此样本所列技术参数不受法律约束，具体请详见相应产品说明书

These specifications and data are not legally binding. For any technical information, please refer to corresponding instructions.

V. 2017-11A1