



All Rights Reserved

Materials and specifications are subject to change without notice.
Featured machines in photos may include additional equipment.
See your XCMG dealer for available options.

"XCMG", "WWW.XCMG.COM", "XCMG For Your Success",
as well as the corporate and product identity used herein
are trademarks and may not be used without permission.



LW180K

WHEEL LOADER



www.xcmg.com

XCMG Regional Departments:

Europe (+86-516) 87739238 87739271 87739228

West Asia & North Africa (+86-516) 87739251 87739202 87739223

Asia-Pacific (+86-516) 87739500 87739529 87739233

Central Asia (+86-516) 87739218 87739239 87739510

North America (+86-516) 87739285 87739551 87739713

South America (+86-516) 87739196 87739714 87739187

Africa (+86-516) 87739501 87739222 87739709

XUZHOU CONSTRUCTION MACHINERY GROUP IMP. & EXP. CO., LTD

Add: No.1, Tuolanshan Road, Xuzhou Economic Developing Zone, Jiangsu, China 221004

Fax: (+86-516) 87739230

E-mail: export@xcmg.com

LW180K

WHEEL LOADER

This product uses the international mainstream modelling, optimal transmission system and comprehensively optimized working device, and as a high-quality, high-efficiency and cost-effective small loader, it can be widely used in building construction, road maintenance, agriculture and forestry, water conservancy, aggregate stock yards and other small-sized field operations.

MODEL HIGHLIGHTS

- ❑ XCMG's unique heavy-load transmission and structural components, able to offer excellent loadability
- ❑ The newly-optimized working device challenges the efficiency limit of small loaders.
- ❑ Streamlined appearance, wide-view windscreen, arc counterweight, aesthetic modelling, international mainstream
- ❑ The people-oriented design can ensure safety and reduce fatigue, able to create a perfect operation environment for you.
- ❑ The hydraulic pilot, FOPS and ROPS cab, air-conditioning system and stereo, etc. can be configured to achieve comfortable control and sufficient driving safety.



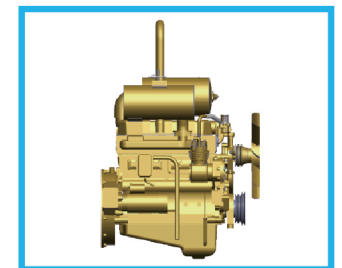
MODEL HIGHLIGHTS

- ❑ The design of a long wheelbase (2300 mm) can adapt to all kinds of overload working conditions, with the stability leading in the industry.
- ❑ The powerful excavation and crushing strength (LW180K excavation power $\geq 55\text{kN}$) can easily satisfy the needs of load lifting.
- ❑ Fast and efficient – The running speed can reach as high as 26 km/h, which is leading in the industry.
- ❑ The discharge height of 2.7 meters can be configured to meet the needs of working in various occasions.

Top-quality power and transmission systems

Surging power

- ▶ Brand-famous engine, up to Euro-III emission standard.
- ▶ The super-strong power with a large torque reserve coefficient can meet the requirements for instantaneous overload during construction and fully provide the power for overload and heavy-load operations.



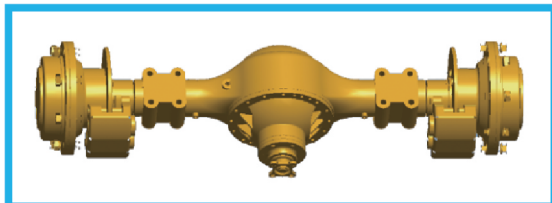
Gearbox and torque converter independently manufactured by XCMG

- ▶ The special high-power converter can ensure efficient use of the engine power.
- ▶ The enhanced design and large modulus gears can effectively promote the transmission overload capacity.
- ▶ The enhanced design and large modulus gears can effectively promote the transmission overload capacity.



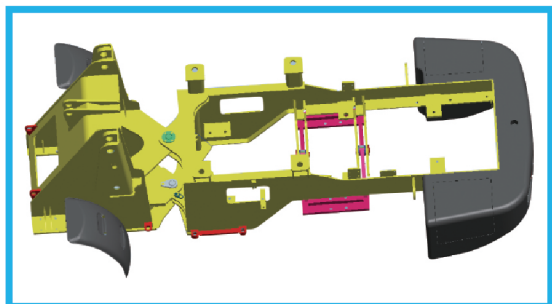
Enhanced heavy-load drive axle excellent in performance

- ▶ The thick and well-stacked load-bearing parts, monolithic gear rings and large modulus gears can provide good overload capacity to meet the needs of all kinds of high-strength overload operations.
- ▶ The large carrying capacity and good stability can fully meet the requirements of heavy-load operations.



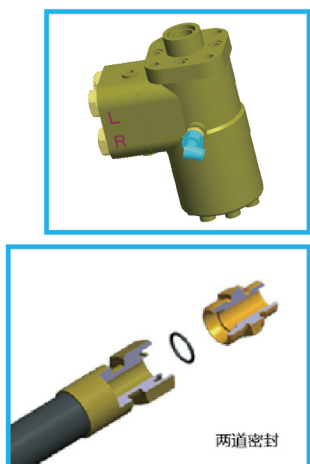
Solid and reliable super-strong heavy-load structural members

- ▶ Heavy-load design, sheet-thick structure, robot-control welding, large torsion resistance coefficient and strong overload capacity.
- ▶ The finite element analysis technology is adopted to reduce the stress concentration and eliminate local weakness, so that the framework could achieve excellent impact and overload resistance to easily adapt to all kinds of working conditions.
- ▶ The alignment design of main link joints can reduce the turning radius and lower the tire wear and energy losses.



World-leading hydraulic and electrical components

- ▶ The hydraulic components all adopt domestic famous brands.
- ▶ The wiring harness adopts imported top-quality materials, with the process layout optimized to ensure sufficient reliability of the circuit system.
- ▶ The Italian hydraulic hoses adopted can provide excellent heat and compression resistance and achieve a longer service life.
- ▶ The hydraulic pipelines adopt two-stage sealing (24° taper and O-ring) in accordance with the international DIN standard, so the sealing can be more reliable and effectively prevent leakage.



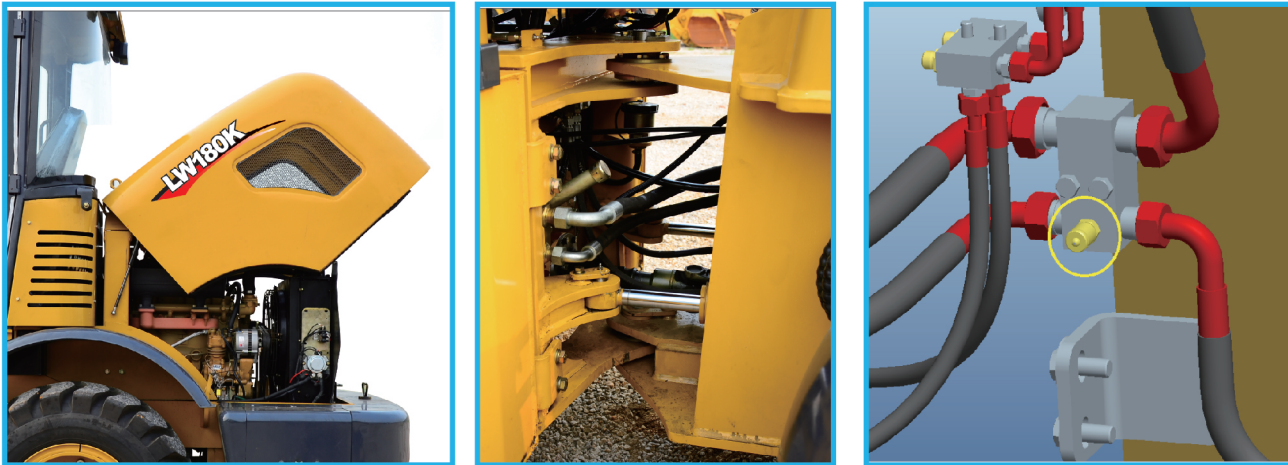
Capacious and comfortable driving space

XCMG's new FOPS&ROPS pressurized cab

- ▶ The super-large space (overall length: 1550 mm) and luxurious cab can provide a good view.
- ▶ The adjustable dashboard can satisfy the requirements of personalized operating habits.
- ▶ It can be equipped with air conditioning, heater and stereo, etc. to provide a comfortable and safe operating environment.
- ▶ The FOPS and ROPS cab, as well as hydraulic pilot, can be configured to improve operation comfortableness.
- ▶ The considerate sound insulation and noise reduction treatment can have the complete cab leading in the industry by virtue of its low noise level.

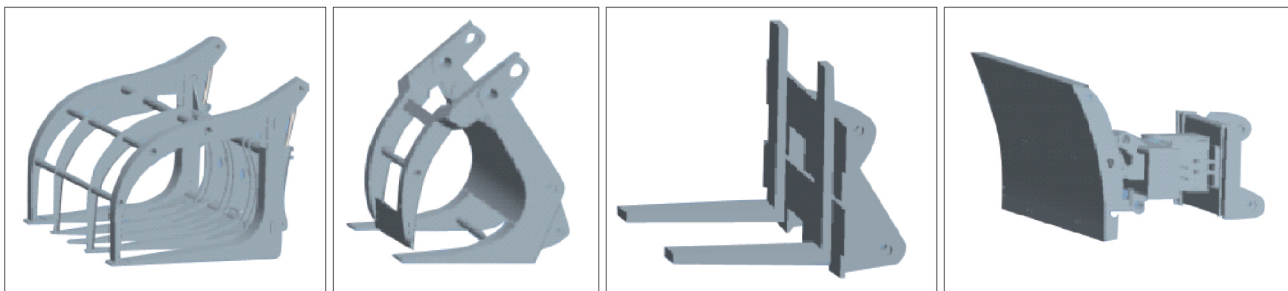


Easy service and maintenance



- ▶ The engine hood can be opened forward or backward to fully expose the engine and coolant tank for easy and convenient maintenance.
- ▶ The oil level checker and oil and grease fillers are arranged for easy access and moreover, the air filter element and electrical components are easy to check and replace.
- ▶ The system pressure detector is led out to facilitate maintenance.
- ▶ The integrated fuse box can indicate the running status of the whole electrical system and facilitate maintenance.

A variety of working devices can adapt to different requirements



Parameters of variable machine tools

Item	quick-diamond bucket	grass-handler	Log clamp	Side-dump bucket	Pallet fork	Snowplow	Unit
Overall height at maximum lift	-	3150	3150	3135	3200	-	mm
Dump clearance at maximum lift(front dump)	2580	2780	2820	2530	2750	-	mm
Reach at maximum lift(front dump)	960	1630	1100	1590	1675	-	mm
Dump clearance/reach at maximum lift (side dump)	-	-	-	3623/83	-	-	mm
Max. dumping angle(work tool)	45	20	30	30	20	-	°
Length(work tool)	925	1300	825	1580	1350	1900	mm
Width(work tool)	2060	1750	1325	1220	1220	858	mm
Height(work tool)	890	1325	1415	1016	1169	-	mm
Tine length(pallet fork)	-	-	-	1070	1070	28	mm
Max. clamping diameter	-	800	300	-	-	-	mm
Max.opening	-	2100	975	-	990	-	mm
Overall machine dimensions-length	5980	6400	5890	6300	6415	-	mm
Overall machine dimensions-width	2060	1960	1960	1960	1960	-	mm
Overall machine dimensions-height	3220	2950	2950	2950	2950	-	mm